

SMD Power Inductor CDRH4D28C



Description

- Ferrite drum core construction.
- Magnetically shielded.
- L × W × H: 5.1 × 5.1 × 3.0 mm Max.
- Product weight: 0.21g(Ref.)
- Moisture Sensitivity Level: 1
- RoHS compliance.

Environmental Data

- Operating temperature range: -40°C ~ +105°C (including coil's self temperature rise)
- Storage temperature range: -40°C ~ +105°C
- Solder reflow temperature: 260 °C peak.

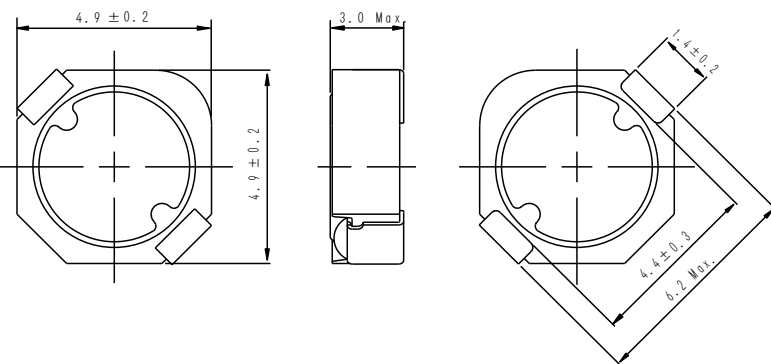
Packaging

- Carrier tape and reel packaging
- 12.9" diameter reel
- 2000pcs per reel

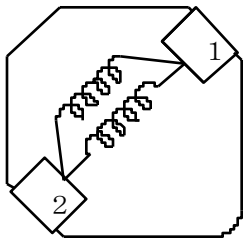
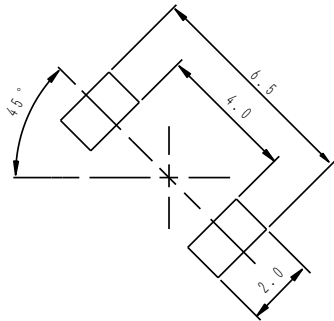
Applications

- Ideally used in Mobile phone, PDA, MP3, HDD, DSC/DVC, Note book PC, etc as DC-DC converter inductors.

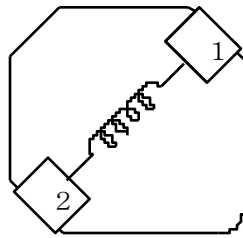
Dimension - [mm]



Land pattern and Schematics - [mm]



(1.1µH ~ 6.3µH)



(10µH ~ 100µH)



Electrical Characteristics

Part No.	Stamp	Inductance (μH) [within] ※1	D.C.R.(Ω) Max. (Typ.) (at 20°C)	Rated Current (A) ※2
CDRH4D28CNP-1R1PC	A	1.1 \pm 25%	22m(17.5m)	3.80
CDRH4D28CNP-2R0PC	B	2.0 \pm 25%	29m(23.0m)	2.60
CDRH4D28CNP-3R2PC	C	3.2 \pm 25%	42m(33.3m)	2.30
CDRH4D28CNP-4R7PC	D	4.7 \pm 25%	63m(50.0m)	1.80
CDRH4D28CNP-6R3PC	E	6.3 \pm 25%	94m(75.0m)	1.30
CDRH4D28CNP-100PC	F	10 \pm 25%	106m(85.0m)	1.26
CDRH4D28CNP-150PC	G	15 \pm 25%	137m(110m)	1.05
CDRH4D28CNP-220PC	H	22 \pm 25%	207m(166m)	0.85
CDRH4D28CNP-330PC	I	33 \pm 25%	331m(265m)	0.70
CDRH4D28CNP-470PC	J	47 \pm 25%	510m(408m)	0.54
CDRH4D28CNP-680PC	K	68 \pm 25%	625m(500m)	0.49
CDRH4D28CNP-101PC	L	100 \pm 25%	948m(758m)	0.40

※1. Inductance measuring condition: at 100kHz.

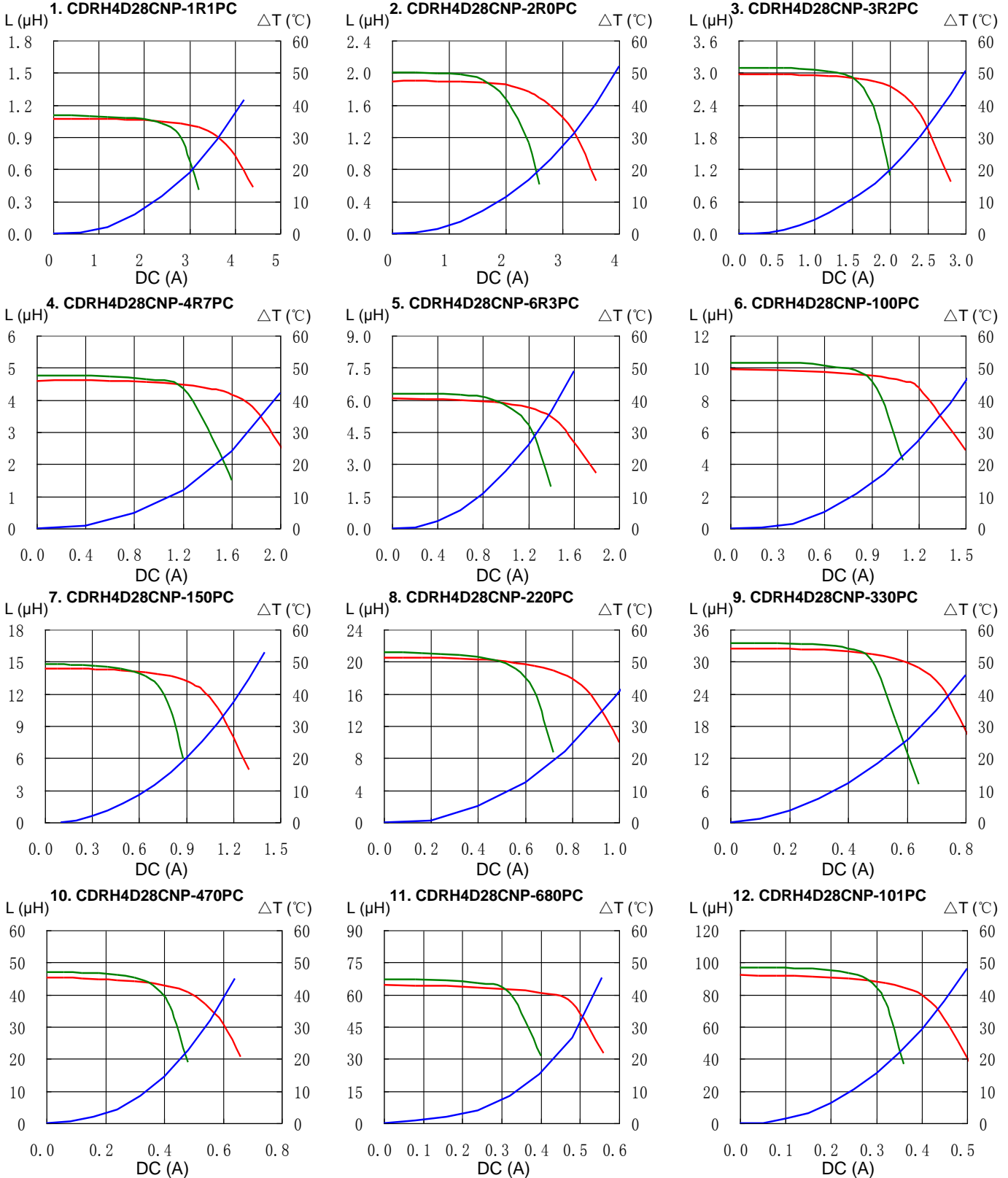
※2. Rated current: The DC current at which the inductance decreases to 65% of its nominal value or when $\Delta t=40^\circ\text{C}$, whichever is lower ($T_a=20^\circ\text{C}$).

SMD Power Inductor CDRH4D28C



Saturation Current & Temperature Rise Graph

— L (20°C) — L (100°C) — ΔT

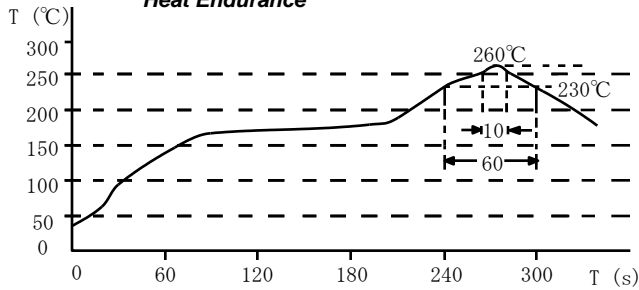


SMD Power Inductor CDRH4D28C

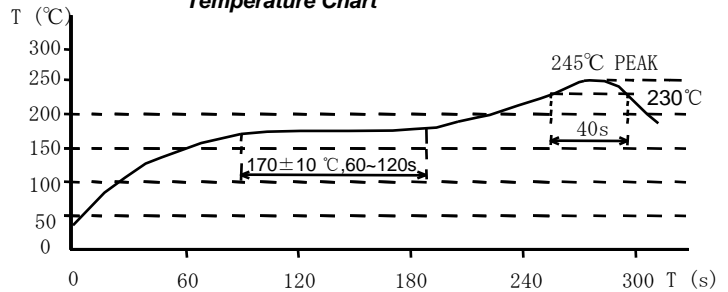


Solder Reflow Condition

Heat Endurance



Temperature Chart



Please refer to the sales offices on our website - <http://www.sumida.com>

Hong Kong

Tel.+852-2880-6781
FAX.+852-2565-9600
sales@hk.sumida.com

Saitama(Japan)

Tel.+81-48-691-7300
FAX.+81-48-691-7340
sales@jp.sumida.com

Chicago

Tel.+1-847-545-6700
FAX. +1-847-545-6720
sales@us.sumida.com

Shanghai

Tel.+86-21-5836-3299
FAX.+86-21-5836-3266
shanghai.sales@cn.sumida.com

Seoul

Tel.+82-2-6237-0777
FAX.+82-2-6237-0778
sales@kr.sumida.com

Obernzell

Tel.+49-8591-937-0
FAX. +49-8591-937-103
contact@eu.sumida.com

Shenzhen

Tel.+86-755-8291-0228
FAX.+86-755-8291-0338
shenzhen.sales@cn.sumida.com

Singapore

Tel.+65-6296-3388
FAX.+65-6841-4426
sales@sg.sumida.com

Neumarkt

Tel.+49-9181-4509-110
FAX. +49-9181-4509-310
infocomp@eu.sumida.com

Taipei

Tel.+886-2-8751-2737
FAX.+886-2-8751-2738
sales@tw.sumida.com

San Jose

Tel.+1-408-321-9660
FAX.+1-408-321-9308
sales@us.sumida.com

Mouser Electronics

Authorized Distributor

Click to View Pricing, Inventory, Delivery & Lifecycle Information:

Sumida:

[CDRH4D28CNP-1R1PC](#) [CDRH4D28CNP-4R7PC](#) [CDRH4D28CNP-100PC](#) [CDRH4D28CNP-150PC](#)
[CDRH4D28CNP-470PC](#) [CDRH4D28CNP-2R0PC](#) [CDRH4D28CNP-330PC](#) [CDRH4D28CNP-6R3PC](#)