

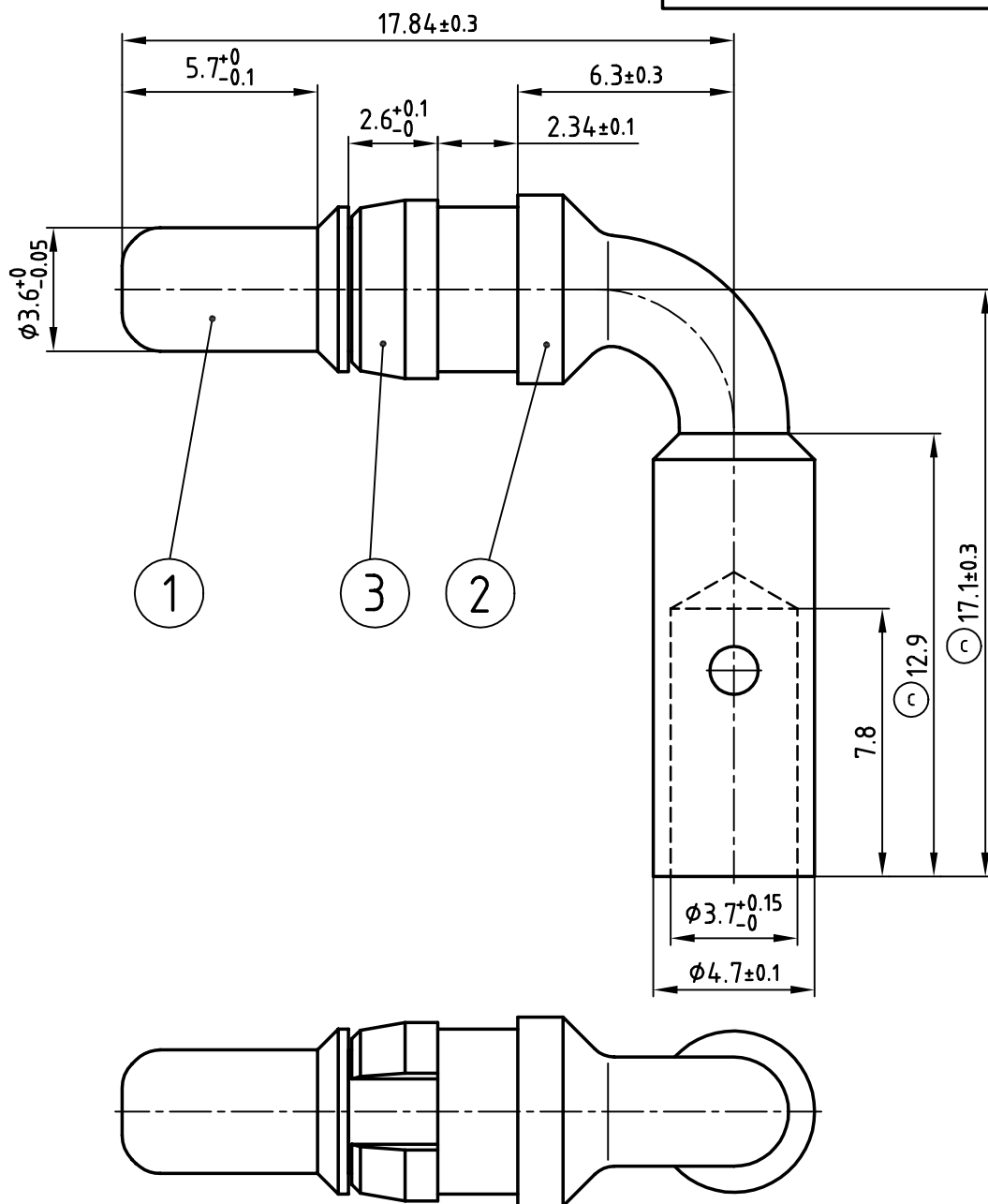
4

3

2

1

used for: D-SUB COMBINATION



NOTES:

1. MATERIAL: COPPER ALLOY

2. PLATING:

ITEM 1: min. 30µ" HARD GOLD OVER min. 50µ" NICKEL

ITEM 2: min. 8µ" HARD GOLD OVER min. 50µ" NICKEL

ITEM 3: NICKEL PLATED

APPROVAL # FREIGABE # DEBLOCKAGE # AUTOR/ZACION # APPROVAL	
CUSTOMER APPROVAL DATE:	
NAME:	TITLE:
COMPANY NAME:	
APPROVAL # FREIGABE # DEBLOCKAGE # AUTOR/ZACION # APPROVAL	

THIS DRAWING MAY NOT BE COPIED OR REPRODUCED IN ANY WAY, AND MAY NOT BE PASSED ON TO A THIRD PARTY WITHOUT WRITTEN PERMISSION.
OWNERSHIP AND COPYRIGHT OF CONEC GmbH
DO NOT ALTER CAD DRAWING BY HAND

				tolerance		ISO 2768-m	scale:	material:	title:
2 x c	Ä 1615	21.08.2002	Parei	2002	date				
1 x b	Ä 1603	08.08.2002	Parei	drawn	26.07.				
rev.	description	date	name	appd.	26.07.	E. Mickenbecker			
				norm					
				d-old					

CONEC®

scale:	5:1
material:	SEE NOTES
title:	
HIGH POWER CONTACT MALE	
(b) CRIMP / SOLDER VERSION 90° - 30A	
D-SUB COMBINATION	
dwg no:	AutoCAD
13K1A657	
part no:	131C16039X

4

3

2

1

Mouser Electronics

Authorized Distributor

Click to View Pricing, Inventory, Delivery & Lifecycle Information:

[CONEC:](#)

[131C16039X](#)