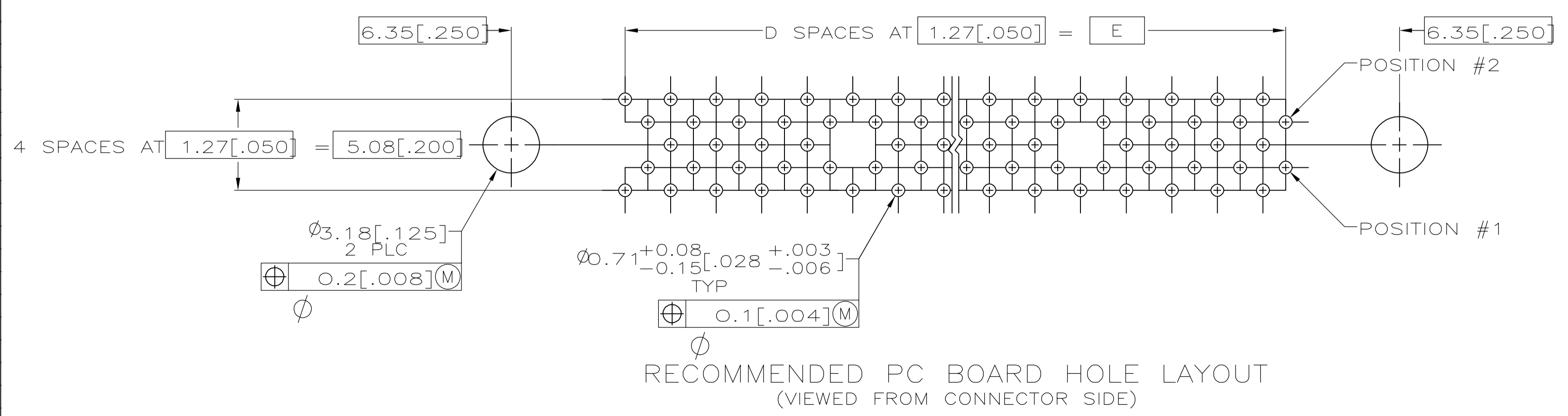
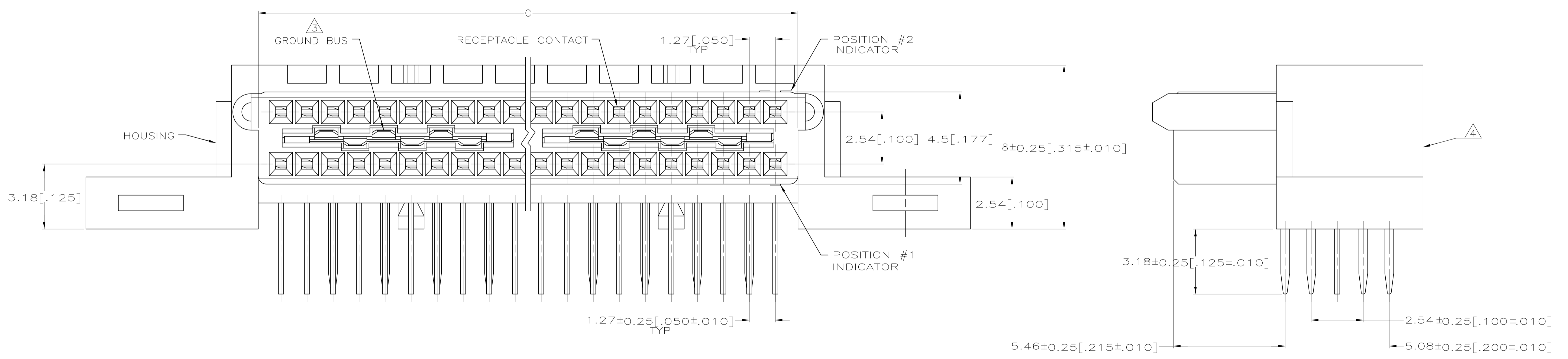


- 1 MOLDED PARTS: HIGH TEMPERATURE THERMOPLASTIC, COLOR NATURAL.  
RECEPTACLE CONTACTS: PHOSPHOR BRONZE.  
GROUND BUSSES: PHOSPHOR BRONZE.
- 2 RECEPTACLE CONTACTS: 0.00076[.000030] MIN GOLD IN CONTACT AREA, 0.00254-0.00762[.000100-.000300] TIN-LEAD ON SOLDER TAIL, ALL OVER 0.00127-0.00254[.000050-.000100] NICKEL ON ENTIRE CONTACT.  
GROUND BUSSES: 0.00076[.000030] MIN GOLD IN CONTACT AREA, 0.00254-0.00762[.000100-.000300] TIN-LEAD ON SOLDER TAIL, ALL OVER 0.00127-0.00254[.000050-.000100] NICKEL ON ENTIRE BUS.
- 3 ONE GROUND BUS WITH 4 TAILS PER EACH 20 RECEPTACLE CONTACTS.
- 4 ASSEMBLIES 140 POSITIONS OR SMALLER HAVE A ONE PIECE ORGANIZER. ASSEMBLIES 160 POSITIONS OR LARGER HAVE MULTIPLE ORGANIZERS OF 40 AND/OR 60 POSITIONS.



OBSOLETE	151.13[5.950]	119	153.34[6.037]	163.83[6.450]	170.18[6.700]	240	1-536297-1
OBSOLETE	138.43[5.450]	109	140.64[5.537]	151.13[5.950]	157.48[6.200]	220	1-536297-0
	125.73[4.950]	99	127.94[5.037]	138.43[5.450]	144.78[5.700]	200	536297-9
OBSOLETE	113.03[4.450]	89	115.24[4.537]	125.73[4.950]	132.08[5.200]	180	536297-8
OBSOLETE	100.33[3.950]	79	102.54[4.037]	113.03[4.450]	119.38[4.700]	160	536297-7
	87.63[3.450]	69	89.84[3.537]	100.33[3.950]	106.68[4.200]	140	536297-6
	74.93[2.950]	59	77.14[3.037]	87.63[3.450]	93.98[3.700]	120	536297-5
	62.23[2.450]	49	64.44[2.537]	74.93[2.950]	81.28[3.200]	100	536297-4
	49.53[1.950]	39	51.74[2.037]	62.23[2.450]	68.58[2.700]	80	536297-3
	36.83[1.450]	29	39.04[1.537]	49.53[1.950]	55.88[2.200]	60	536297-2
	24.13[.950]	19	26.34[1.037]	36.83[1.450]	43.18[1.700]	40	536297-1
	E	D	C	B	A	NO OF POS	PART NUMBER

THIS DRAWING IS A CONTROLLED DOCUMENT.

DIMENSIONS: mm [INCHES]	TOLERANCES UNLESS OTHERWISE SPECIFIED:	DIN J GERACE 1-4-93	tyco Electronics Tyco Electronics Corporation Harrisburg, PA 17105-3608
0 PLC ± -	1 PLC ± -	1-4-93	RECEPTACLE ASSEMBLY, RIGHT ANGLE, 3.18[.125] TAIL, BOARD TO BOARD, MICRO-STRIP
2 PLC ± -	3 PLC ± -	1-4-93	SIZE: A1
4 PLC ± -	ANGLES ± -	NAME: D SINISI	SCALE: 10:1
		PRODUCT SPEC: 108-1272	SHEET: 1 OF 1
		APPLICATION SPEC: -	REV: K1
MATERIAL: 1	FINISH: 2	WEIGHT: -	CUSTOMER DRAWING
		00779	SCALE: 10:1
		536297	SHEET: 1 OF 1
			REV: K1

# Mouser Electronics

Authorized Distributor

Click to View Pricing, Inventory, Delivery & Lifecycle Information:

[TE Connectivity:](#)

[536297-5](#)