

D  
Dimensioning and tolerancing per ASME Y14.5M-2009  
C

B

A

D

C

B


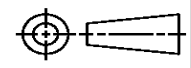
A

4		3		2		1	
THIS DRAWING IS UNPUBLISHED.		RELEASED FOR PUBLICATION		LOC		DIST	
© COPYRIGHT		ALL RIGHTS RESERVED.					
				REVISIONS			
P	LTR	DESCRIPTION		DATE	DWN	APVD	
	B2	MODIFIED REPLACEMENT PART NUMBER		07DEC2012	LG	TE	

# REPLACED BY OCEAN STYLE APPLICATOR PART NUMBER 2151602-1

FOR REPLACEMENT PARTS FOR APPLICATOR 1528705  
REFER TO ADDITIONAL PAGE(S). SPARE PARTS KIT (IF LISTED)  
WILL REMAIN AVAILABLE.

THE REPLACEMENT OCEAN STYLE APPLICATOR HAS THE  
SAME TERMINATOR/PRESS INTERFACE AS APPLICATOR  
1528705

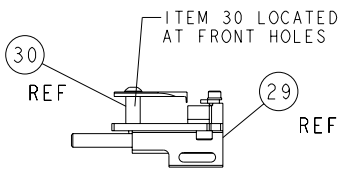
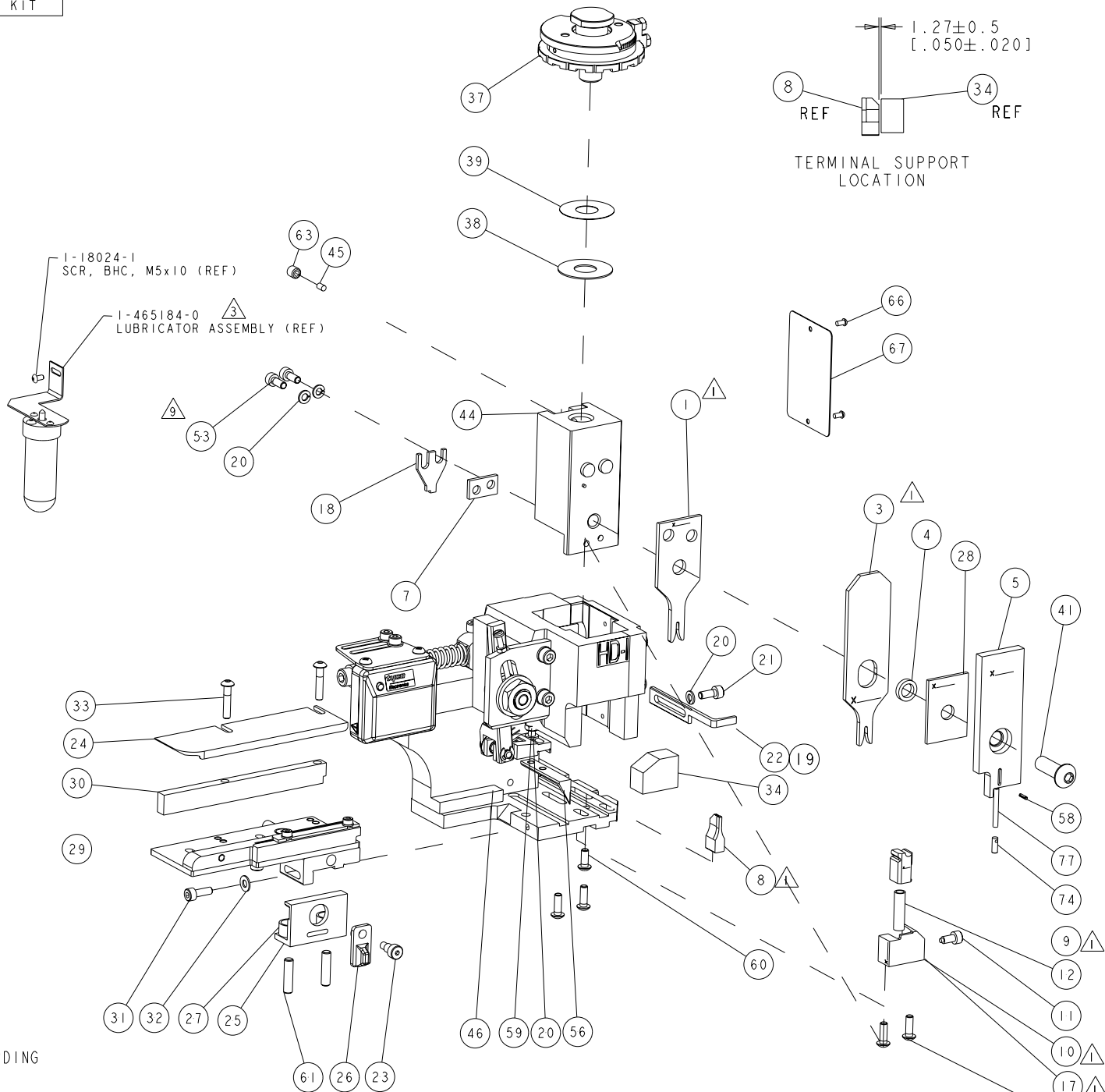
THIS DRAWING IS A CONTROLLED DOCUMENT.		DWN L.GROSS		 TE Connectivity			
		CHK T.ELBIN					
DIMENSIONS:		TOLERANCES UNLESS OTHERWISE SPECIFIED:		NAME			
		0 PLC ±		PRODUCT SPEC			
		1 PLC ±		APPLICATION SPEC			
		2 PLC ±		SIZE			
		3 PLC ±		CAGE CODE			
4 PLC ±		4 PLC ±		DRAWING NO			
MATERIAL		FINISH		RESTRICTED TO			
				©- 1528705			
				CUSTOMER DRAWING			
				SCALE			
				SHEET 1 OF 2			
				REV B2			

THIS DRAWING IS UNPUBLISHED.		RELEASED FOR PUBLICATION		28
<input checked="" type="checkbox"/> COPYRIGHT 20 BY TYCO ELECTRONICS CORPORATION. ALL RIGHTS RESERVED.				
PART NUMBER	REV	TERMINATOR	FEED TYPE	DESCRIPTION
1528705-1	B	LEADMAKER	MECH POST FEED	CUTS CARRIER
1528705-2	B	BENCH	MECH PRE FEED	CUTS CARRIER
1528705-6	B	LEADMAKER	MECH POST FEED	CONTINUOUS CARRIER
7-1528705-1	B	LEADMAKER	MECH POST FEED	-1 AND SPARE PARTS
7-1528705-2	B	BENCH	MECH PRE FEED	-2 AND SPARE PARTS
7-1528705-6	B	LEADMAKER	MECH POST FEED	-6 AND SPARE PARTS
7-1528705-7	A	-	-	SPARE PARTS KIT

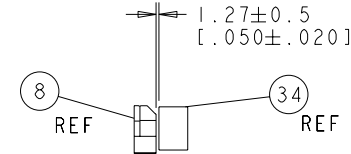
[illegible]

- ① RECOMMENDED SPARE PARTS.
- ② GREASE RAM, CAM, CAM FOLLOWER AND FEED ROD LIGHTLY.
- ③ CERTAIN TERMINALS REQUIRE LUBRICATION. REFER TO THE APPLICATOR INSTRUCTION SHEET FOR MORE INFORMATION.
- ④ LUBRICATE DAILY PER THE APPLICATOR INSTRUCTION SHEET SUPPLIED WITH THE APPLICATOR.
- ⑤ MAXIMUM WIDTH OF TERMINAL ALONG ENTIRE LENGTH MUST NOT EXCEED 1.90mm.
- ⑥ RESTRICTED FOR USE OF TERMINALS IN 92+8 WAY FAMILY SEALED AIRBAG CONNECTOR, MANUFACTURED BY YAZAKI ACCORDING TO VW DRAWING NUMBER TAB 10 329 CB.
- ⑦ INSULATION CRIMP DIMS. MAY NOT CONFORM TO THAT STATED IN APPLICATION SPECIFICATION.
- ⑧ CRIMPER AND ANVIL DIMS. MAY NOT CONFORM TO THAT STATED IN 114-18021-10 SPECIFICATION.
- ⑨ CUT TO LENGTH AT ASSEMBLY.

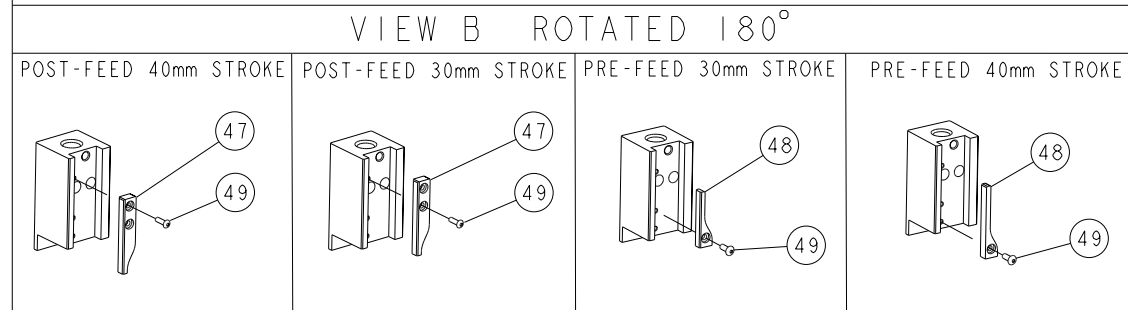
\* WARNING  
ON INSTALLATION, SET WIRE  
DISC TO LARGEST WIRE SIZE  
SETTING. USE OF SETTINGS  
BELOW MIN. REQUIRED CRIMP  
HEIGHT SETTING WILL CAUSE  
DAMAGE TO CRIMP TOOLING.



# FEED TRACK POSITION GUIDE BY WIRE BARREL



## TERMINAL SUPPORT LOCATION





-	-	-	-	-	-	-	-	-	84
-	-	-	-	-	-	-	-	-	83
-	-	-	-	-	-	-	-	-	82
-	-	-	-	-	-	-	-	-	81
-	-	-	-	-	-	-	-	-	80
-	-	-	-	-	-	-	-	-	79
-	-	-	-	-	-	-	-	-	78
-							5-547505-2	SPRING, COMPRESSION	77
-	-	-	-	-	-	-	-	-	76
-	-	-	-	-	-	-	-	-	75
-							854769-2	HOLDER, INS	74
-77	-76	-72	-71	-6	-2	-1	PART NO	DESCRIPTION	ITEM NO

CUSTOMER DRAWING

SET UP GAGE  
458637-3

LOC	DIST	REVISIONS					
A	66						
		P	LTR	DESCRIPTION	DATE	DWN	APVD
			A	SEE ECO-06-021466	08SEP2006	LJL	MC
			B	SEE ECR-06-022369	20SEP2006	MC	MC

-	-	-	-	-	-	-	-	-	-	73
-	-	-	-	-	-	-	-	-	-	72
-								1338705-3	DOCUMENTATION PACKAGE	71
-	-	-	-	-	-	-	-	-	-	70
-	-	-	-	-	-	-	-	-	-	69
-	-	-	-	-	-	-	-	-	-	68
-								461264-5	PLATE, IDENTIFICATION	67
-	2	2	2	2	2	2	2	21017-2	SCREW, DRIVE	66
-	-	-	-	-	-	-	-	-	-	65
-	-	-	-	-	-	-	-	-	-	64
-								3-18031-0	SCR, SET, CUP POINT M6 X 6.0	63
-	-	-	-	-	-	-	-	-	-	62
-	2	2	2	2	2	2	2	2-18032-5	SCR, SET, FLT POINT M5 X 20.0	61
-								18024-7	SCR, BTN SKT HD CAP (M4 X 10.0)	60
-								5-18022-2	SCR, HEX HD CAP M4 X 8.0	59
-								21028-2	PIN, SLOTTED SPRING .062 X .250	58
-	-	-	-	-	-	-	-	-	-	57
-								1338685-1	PAWL, FEED	56
-	-	-	-	-	-	-	-	-	-	55
-	4	4	4	4	4	4	4	18024-8	SCR, BTN SKT HD CAP (M4 X 12.0)	54
-	2	2	2	2	2	2	2	1-18023-1	SCR, SKT HD CAP M4 X 10.0	53
-	-	-	-	-	-	-	-	-	-	52
-	-	-	-	-	-	-	-	-	-	51
-	-	-	-	-	-	-	-	-	-	50
-								18024-3	SCR, BTN SKT HD CAP (M3 X 10.0)	49
-	-		-	-		-	-	1338675-1	CAM, UNIVERSAL PRE FEED	48
-		-			-		-	1338676-1	CAM, UNIVERSAL POST-FEED	47
-								1320999-3	APPLICATOR SUBASSEMBLY, HDI	46
-								690191-1	PLUG,NYLON	45
-								1338660-1	RAM	44
-	-	-	-	-	-	-	-	-	-	43
-	-	-	-	-	-	-	-	-	-	42
-								2-18024-6	SCR, BTN SKT HD CAP (M8 X 25.0)	41
-	-	-	-	-	-	-	-	-	-	40
-								690125-1	SHIM SUB-ASSY	39
-								469367-8	SHIM	38
-								879103-3	FINE ADJUST HEAD SUBASSY	37
-	-	-	-	-	-	-	-	-	-	36
-	-	-	-	-	-	-	-	-	-	35
-								1320934-6	SUPPORT, TERMINAL	34
-	2	2	2	2	2	2	2	1-18024-0	SCR, BTN SKT HD CAP (M4 X 20.0)	33
-								18027-2	WASHER, FLAT, REG M4	32
-								1-18023-2	SCR, SKT HD CAP M4 X 12.0	31
-								1320908-4	SPACER, STRIP GUIDE	30
-								1633073-1	STRIP GUIDE ASSEMBLY	29
-								1-455888-8	SPACER, CRIMPER	28
-	2	2	2	2	2	2	2	1-22284-0	SPRING, COMPRESSION	27
-								356835-1	LEVER, DRAG RELEASE	26
-								240792-1	DRAG, TERMINAL	25
-								1320928-1	STRIP GUIDE	24
-								980371-4	SCR, SKT HD SHLDR 5.0 DIA X 6.0	23
-		-		-		-		690472-2	STRIPPER	22
-								1-18023-1	SCR, SKT HD CAP M4 X 10.0	21
-	4	4	4	4	4	4	4	18025-2	WASHER, SPRG LOCK, REG M4	20
-	-		-	-		-	-	690472-1	STRIPPER	

-77 -76 -72 -71 -6 -2 -1							PART NO		DESCRIPTION				ITEM NO								
THIS DRAWING IS A CONTROLLED DOCUMENT FOR TYCO ELECTRONICS CORPORATION IT IS SUBJECT TO THE PROTECTIVE POLICY OF TYCO ELECTRONICS CORPORATION IT SHOULD BE CONTACTED FOR THE LATEST REVISION							DWN	10AUG2006			Tyco Electronics		Harrisburg, PA 17105-3608								
							CHK	-	-												
DIMENSIONS:							TOLERANCES UNLESS OTHERWISE SPECIFIED:							NAME							
mm [IN]							APVD							10AUG2006							
							PRODUCT SPEC														
							APPLICATION SPEC														
							See Table														
							FINISH														
MATERIAL							WEIGHT		SIZE		CAGE CODE	DRAWING NO	RESTRICTED TO								
-							-		A1		00779	G-1528705	6	-							
CUSTOMER DRAWING														SCALE		3:5	SHEET	1	OF	REV	B

DRAWING NUMBER - 1528705 SHEET 2 OF 2 REV. B2

# Mouser Electronics

Authorized Distributor

Click to View Pricing, Inventory, Delivery & Lifecycle Information:

[TE Connectivity:](#)

[1528705-1](#)