

4

3

2

1

THIS DRAWING IS UNPUBLISHED.

RELEASED FOR PUBLICATION

2011

© COPYRIGHT 2011

ALL RIGHTS RESERVED.

LOC
FT 0DIST
0

REVISIONS

| P | LTR | DESCRIPTION | DATE | DWN | APVD |
|---|-----|---------------------------|-----------|-----|------|
| | C | PLATING INFORMATION ADDED | 16JUL2019 | RK | PS |

TERMINAL PLATE

1.50

5.00

"L"

0.50

1.25

0.50

2.50

14.80

11.80

(14.45)

0.80

5.00

3.30

SCALE 2:1
-4 AS SHOWN

| 5 | SEE FIG | | | |
|--------|---------|-------------|--|--|
| 46.50 | 9 | 2-1986711-6 | | |
| 126.50 | 25 | 2-1986711-5 | | |
| 121.50 | 24 | 2-1986711-4 | | |
| 116.50 | 23 | 2-1986711-3 | | |
| 111.50 | 22 | 2-1986711-2 | | |
| 106.50 | 21 | 2-1986711-1 | | |
| 101.50 | 20 | 2-1986711-0 | | |
| 96.50 | 19 | 1-1986711-9 | | |
| 91.50 | 18 | 1-1986711-8 | | |
| 86.50 | 17 | 1-1986711-7 | | |
| 81.50 | 16 | 1-1986711-6 | | |
| 76.50 | 15 | 1-1986711-5 | | |
| 71.50 | 14 | 1-1986711-4 | | |
| 66.50 | 13 | 1-1986711-3 | | |
| 61.50 | 12 | 1-1986711-2 | | |
| 56.50 | 11 | 1-1986711-1 | | |
| 51.50 | 10 | 1-1986711-0 | | |
| 46.50 | 9 | 1986711-9 | | |
| 41.50 | 8 | 1986711-8 | | |
| 36.50 | 7 | 1986711-7 | | |
| 31.50 | 6 | 1986711-6 | | |
| 26.50 | 5 | 1986711-5 | | |
| 21.50 | 4 | 1986711-4 | | |
| 16.50 | 3 | 1986711-3 | | |
| 11.50 | 2 | 1986711-2 | | |
| "L" | POLE | PART NO | | |

- MATERIAL:
HOUSING - PA66 , UL94 V0
CLAMPING SPRING - STAINLESS STEEL
PIN - COPPER ALLOY - BRIGHT TIN PLATED
- MECHANICAL:
MIN. PC BOARD HOLES DIAMETER : 1.2 mm
MAX. PC BOARD THICKNESS : 2.4 mm
WIRE STRIPPING LENGTH : 11.5 mm
- ELECTRICAL:
WIRE RANGE : 12-30 AWG
RATED VOLTAGE : 300V
RATED CURRENT : 16A
CONTACT RESISTANCE : <15 m Ohm
INSULATION RESISTANCE : >1000 M Ohm (500V DC)
- OPERATING TEMPERATURE RANGE : -40°C TO +105°C

5 PRELIMINARY PART

| | | | | |
|--|--|----------------------------------|--|-----------------|
| THIS DRAWING IS A CONTROLLED DOCUMENT. | | DWN 08AUG2011 RAGHAVENDRA | TE Connectivity | |
| DIMENSIONS: mm | | CHK 08AUG2011 SARVER MICHAEL | | |
| TOLERANCES UNLESS OTHERWISE SPECIFIED: | | APVD 08AUG2011 SARVER MICHAEL | NAME SPRING TYPE, SIDE WIRE ENTRY TERMINAL BLOCK SIDE STACKABLE STRAIGHT 02 - 25 POLES PITCH 5.00mm | |
| 0 PLC ± 1 PLC ±0.5 2 PLC ±0.25 3 PLC ± 4 PLC ± ANGLES ±1° FINISH | | PRODUCT SPEC | SIZE A3 | CAGE CODE 00779 |
| MATERIAL SEE NOTES | | APPLICATION SPEC | DRAWING NO C-1986711 | RESTRICTED TO |
| | | WEIGHT - | SCALE 4:1 | SHEET 1 OF 2 |
| | | CUSTOMER DRAWING | REV C | |

2.50

PCB LAYOUT

5.00

5.00

5.00

5.00

Ø1.00±0.20

1470-19 (3/11)

THIS DRAWING IS UNPUBLISHED.

RELEASED FOR PUBLICATION

2011

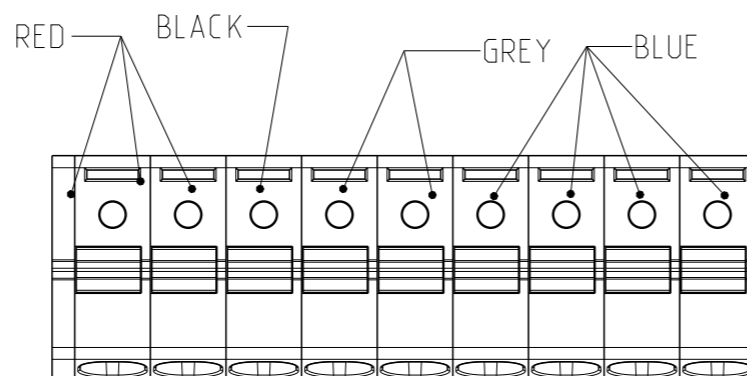
© COPYRIGHT 2011

ALL RIGHTS RESERVED.

LOC FT DIST 0

REVISIONS

| P | LTR | DESCRIPTION | DATE | DWN | APVD |
|---|-----|-------------|------|-----|------|
| | - | SEE SHEET 1 | - | - | - |
| | | | | | |
| | | | | | |

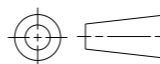


2-1986711-6

THIS DRAWING IS A CONTROLLED DOCUMENT.

DIMENSIONS:

mm



TOLERANCES UNLESS OTHERWISE SPECIFIED:

- 0 PLC ±-
- 1 PLC ±0.5
- 2 PLC ±0.25
- 3 PLC ±-
- 4 PLC ±-
- ANGLES ±1°

MATERIAL SEE NOTES

FINISH SEE NOTES

DWN 08AUG2011 RAGHAVENDRA

CHK 08AUG2011 SARVER MICHAEL

APVD 08AUG2011 SARVER MICHAEL

PRODUCT SPEC -

APPLICATION SPEC -

WEIGHT -

CUSTOMER DRAWING



NAME: SPRING TYPE, SIDE WIRE ENTRY
 TERMINAL BLOCK SIDE STACKABLE
 STRAIGHT 02 - 25 POLES PITCH 5.00mm

SIZE: A3 CAGE CODE: 00779 DRAWING NO: C-1986711 RESTRICTED TO: -

SCALE: 4:1 SHEET: 2 OF 2 REV: C