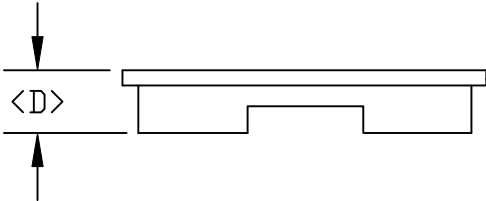
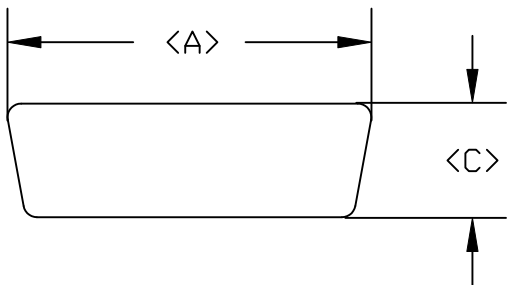


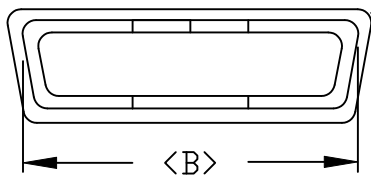
DESCRIPTION: DUST COVER FEMALE

DIMENSIONS

|    | A     | B     | C     | D    |
|----|-------|-------|-------|------|
| 9  | .887  | .783  | .520  | .262 |
|    | 22.53 | 19.88 | 13.21 | 6.65 |
| 15 | 1.222 | 1.113 | .520  | .262 |
|    | 31.03 | 28.27 | 13.21 | 6.65 |
| 25 | 1.752 | 1.645 | .520  | .262 |
|    | 44.51 | 41.79 | 13.21 | 6.65 |
| 37 | 2.420 | 2.310 | .520  | .283 |
|    | 61.47 | 58.67 | 13.21 | 7.19 |
| 50 | 2.154 | 2.154 | .543  | .315 |
|    | 54.70 | 54.7  | 13.80 | 8.00 |



50 POSITION HAS NO LIP




50 POSITION HAS NO LIP

PART NUMBER

|    |                                |
|----|--------------------------------|
| 09 | 160-000-209R000                |
| 15 | 160-000-215R000                |
| 25 | 160-000-225R000                |
| 37 | 160-000-237R000                |
| 50 | 160-000-250L000 (DISCONTINUED) |

MATERIAL:  
 PLASTIC: PE  
 RoHS COMPLIANT

|  |   |  |                              |                            |              |
|--|---|--|------------------------------|----------------------------|--------------|
|  | THESE DRAWINGS AND SPECIFICATIONS ARE THE PROPERTY OF NorComp AND SHALL NOT BE REPRODUCED, COPIED OR USED AS THE BASIS FOR THE MANUFACTURE OF SALE OF APPARATUS WITHOUT WRITTEN PERMISSION. |  | DRAWN:<br><b>PAM JENKINS</b> | DATE:<br><b>12-05-05</b>   |              |
|  | <h1>NorComp</h1>  |  |                              | CHECKED:                   | DATE:        |
| SCALE:   |   |  |                              | SHEET <b>1</b> OF <b>1</b> | REV <b>2</b> |
| DWG NO. <b>160-000-2YYR000</b>   |   |  |                              |                            |              |

# Mouser Electronics

Authorized Distributor

Click to View Pricing, Inventory, Delivery & Lifecycle Information:

[NorComp:](#)

[160-000-225R000](#) [160-000-209R000](#) [160-000-215R000](#) [160-000-237R000](#) [160-000-250R000](#) [160-000-209R002](#)