

THIS DRAWING IS UNPUBLISHED.

RELEASED FOR PUBLICATION

© COPYRIGHT - BY TYCO ELECTRONICS CORPORATION. ALL RIGHTS RESERVED.

MATERIAL:

HOUSING: THERMOPLASTIC, UL94V-0, BLACK.

TERMINALS: TIN PLATED COPPER ALLOY.

QC TABS: TIN PLATED COPPER ALLOY.

SCREWS: 6-32, ZINC PLATED STEEL.

ELECTRICAL:

UL/CSA

CLASS C: 20A, 300V.

CLASS D: 5A, 600V.

WIRE RANGE: 12-22 AWG

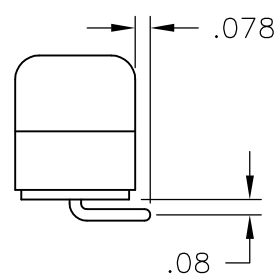
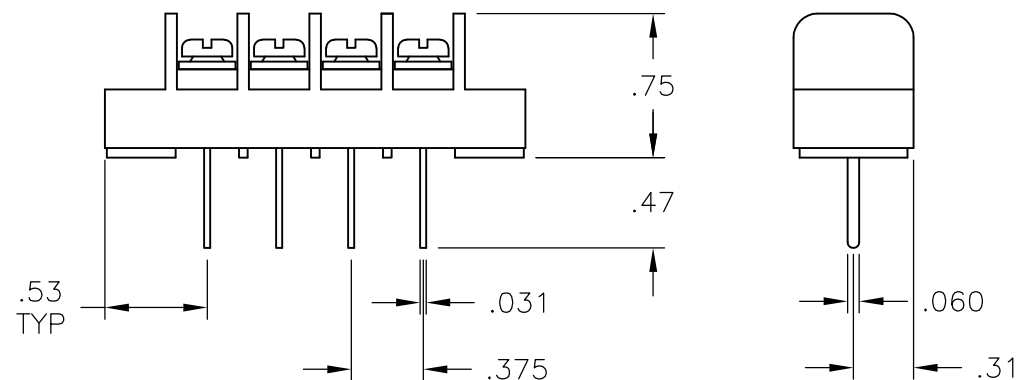
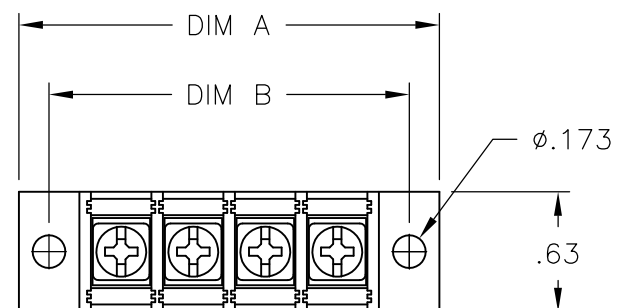
MECHANICAL:

RECOMMENDED TORQUE: 7 IN-LB.

OPERATING TEMP.: 105°C MAX

1\ SCREWS ARE NICKEL PLATED BRASS.

2\ PRELIMINARY PART NUMBER.


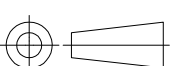


2-1546723-6

LOC	DIST	REVISIONS					
FT	0	P	LTR	DESCRIPTION	DATE	DWN	APV
			B	REVISED PER ECO-10-013617	26JUL10	HMR	CR

	9.000	9.314	23	JC6-E208-23	2-1546723-3
	8.625	8.939	22	JC6-E208-22	2-1546723-2
	8.250	8.564	21	JC6-E208-21	2-1546723-1
	7.875	8.189	20	JC6-E208-20	2-1546723-0
	7.500	7.814	19	JC6-E208-19	1-1546723-9
	7.125	7.439	18	JC6-E208-18	1-1546723-8
	6.750	7.064	17	JC6-E208-17	1-1546723-7
	6.375	6.689	16	JC6-E208-16	1-1546723-6
	6.000	6.314	15	JC6-E208-15	1-1546723-5
	5.625	5.939	14	JC6-E208-14	1-1546723-4
	5.250	5.564	13	JC6-E208-13	1-1546723-3
	4.875	5.189	12	JC6-E208-12	1-1546723-2
	4.500	4.814	11	JC6-E208-11	1-1546723-1
	4.125	4.439	10	JC6-E208-10	1-1546723-0
	3.750	4.064	9	JC6-E208-09	1546723-9
	3.375	3.689	8	JC6-E208-08	1546723-8
	3.000	3.314	7	JC6-E208-07	1546723-7
	2.625	2.939	6	JC6-E206-06	2-1546723-5
	2.625	2.939	6	JC6-E208-06	1546723-6
	2.250	2.564	5	JC6-E208-05	1546723-5
	1.875	2.189	4	JC6-E208-04	1546723-4
	1.500	1.814	3	JC6-E208-03-245	2-1546723-6
	1.500	1.814	3	JC6-E208-03	1546723-3
	1.125	1.439	2	JC6-E206-02	2-1546723-4
	1.125	1.439	2	JC6-E208-02	1546723-2
	DIM. B	DIM. A	NO. OF POS.	CATALOG NUMBER	TE PART NO.

SEE FIGURE 2

THIS DRAWING IS A CONTROLLED DOCUMENT.		DWN S SCHLEGEL		12/8/04		 Tyco Electronics Corporation Harrisburg, Pa 17105-3608	
DIMENSIONS: INCHES		TOLERANCES UNLESS OTHERWISE SPECIFIED:		CHK S. YODER		12/8/04	
		APVD S. YODER		12/8/04		NAME	
		PRODUCT SPEC		—		JC6-E208-XX ASSEMBLY	
		APPLICATION SPEC		—			
MATERIAL —		FINISH —		WEIGHT —		SIZE A3	CAGE CODE 00779
						DRAWING NO C-1546723	
						RESTRICTED T —	
CUSTOMER DRAWING						SCALE NTS	SHEET 1 OF 1
						REV B	

Mouser Electronics

Authorized Distributor

Click to View Pricing, Inventory, Delivery & Lifecycle Information:

[TE Connectivity:](#)

[2-1546723-4](#)