

THIS DRAWING IS UNPUBLISHED.

RELEASED FOR PUBLICATION

© COPYRIGHT BY TYCO ELECTRONICS CORPORATION. ALL RIGHTS RESERVED.

LOC	DIST	REVISIONS				
FX	00	P	LTR	DESCRIPTION	DATE	DWN APVD
			E1	REVISED PER ECR 06-006932	28APR2006	DLD SSA

1. APPLICABLE P.C. BOARD THICKNESS: 1.6mm REF.
2. MATING PLUG HOUSING PART NO 776204.
3. APPLICABLE PRODUCT SPEC NO 108-5281.

4

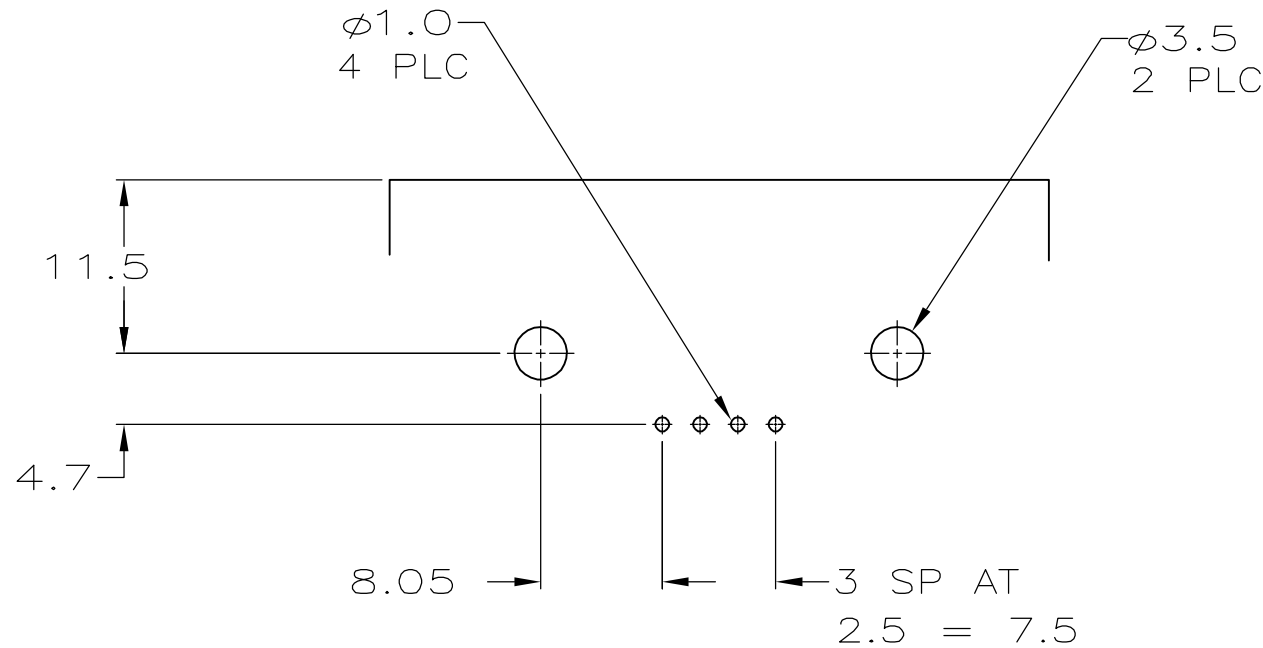
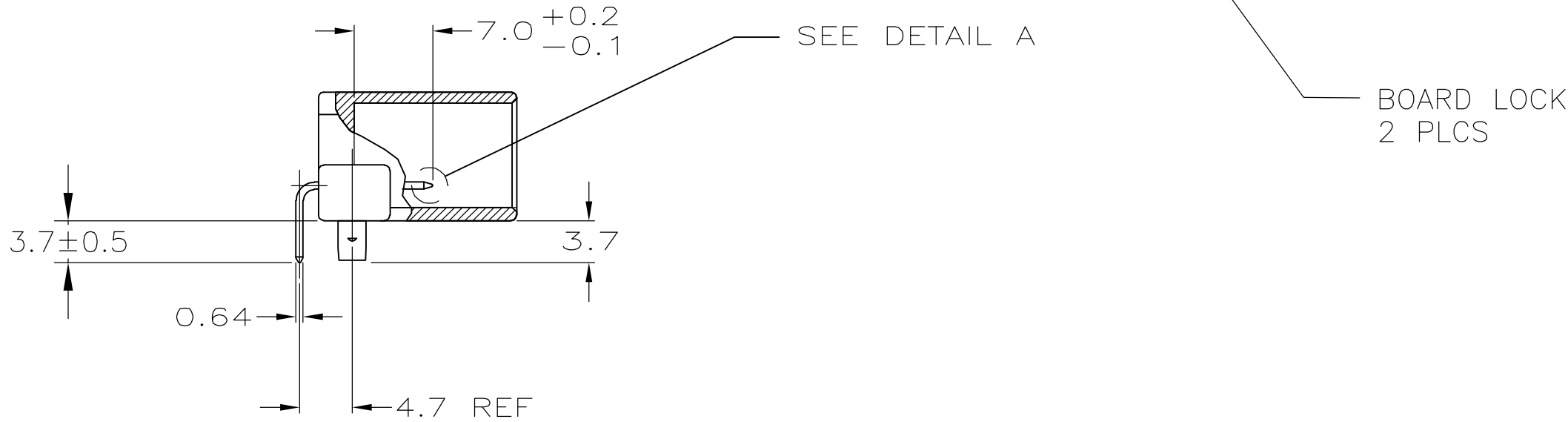
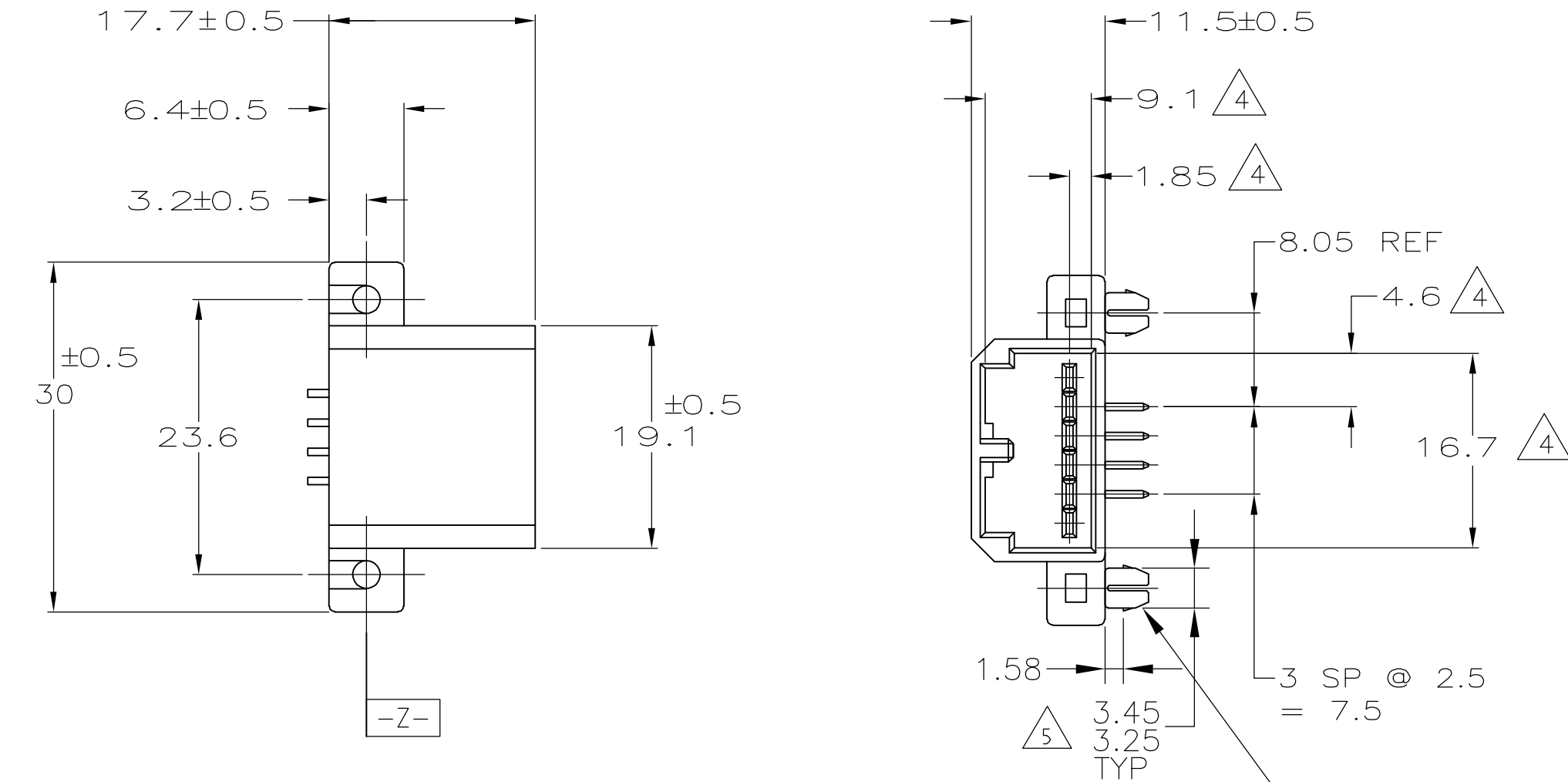
 TO BE MEASURED WITHIN 2mm FROM

-Z-

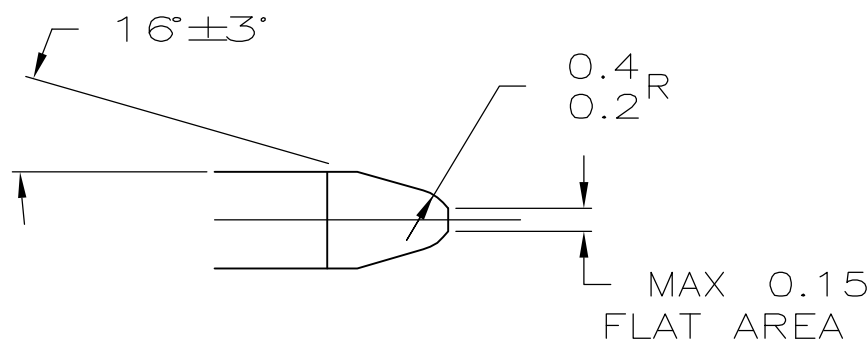
 .

5

 MESUREMENT TO BE MADE BETWEEN HOUSING AND BOARDLOCK RETENTION BARB. MEASURE ROTATED 0-45° AROUND CIRCUMFERENCE.



PRINTED CIRCUIT BOARD LAYOUT



DETAIL A
SCALE 10:1

BRASS C260		POST TIN		PBT		BLACK		9-638077-2	
BRASS C260		PRE-TINNED		PBT		BLACK		638077-2	
MATERIAL		FINISH		MATERIAL		COLOR		PART NUMBER	
PIN				HOUSING					
THIS DRAWING IS A CONTROLLED DOCUMENT.				DWN P. YEAGER		tyco Electronics		Tyco Electronics Corporation Harrisburg, PA 17105-3608	
				CHK R. GRAY					
				APVD R. GRAY					
DIMENSIONS: MM		TOLERANCES UNLESS OTHERWISE SPECIFIED:		3-26-97		NAME			
		0 PLC ± -		PRODUCT SPEC		4/6 POSITION CAP ASSEMBLY, MULTI-LOCK I/O CONN WITH BOARDLOCKS			
		1 PLC ± -		-					
		2 PLC ± 0.20		APPLICATION SPEC					
		3 PLC ± -		-					
		4 PLC ± -		-					
ANGLES ± -				SIZE		CAGE CODE		DRAWING NO	
MATERIAL		FINISH		WEIGHT		A2		00779	
SEE TABLE		SEE TABLE		CUSTOMER DRAWING		SCALE		RESTRICTED TO	
						2:1		-	
						SHEET		1 OF 1	
						REV		E1	

Mouser Electronics

Authorized Distributor

Click to View Pricing, Inventory, Delivery & Lifecycle Information:

[TE Connectivity:](#)

[9-638077-2](#)