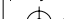

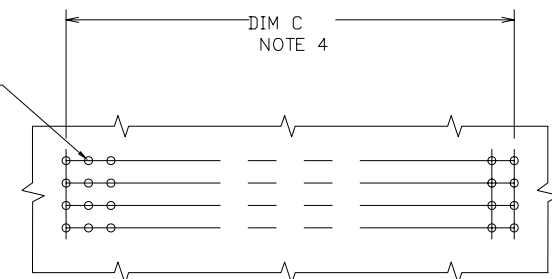


mat'l. code				surface ISO 1302 ✓		tolerance ISO 406 ISO 1101		projection 		product family HPC					
ltr ecn no dr date				tolerances unless otherwise specified						title					
C	V20809	MRC	4/7/92	angles		linear		.XX±.01/.3		INCH/MM		4 ROW VERTICAL HEADER			
D	V20363	JM	2/21/93					.XXX±.005/.13				CARD CONN. STYLE SOLDER TAILS PINS			
E	V90861	HTB	4/18/99	0°±2'				.XXXX±.0020/.05		scale 1:1					
F V00278 JWS 2/4/00				dr	D.HORCHLER		7/5/05				dwg no		sheet 1 of 2	size	
G V05-0632 DCH 7/5/05				enrg	D.HORCHLER		7/5/05				50357		A		
H V05-1039 DAI 11/15/05				chr	T.BREWBAKER		7/5/05								
J M06-0260 MHT 7/07/06				appd	D.HORCHLER		7/5/05				type		Product	Customer	Drawing
sheet index		revision sheet		J	J										
				1	2										

PRODUCT NUMBER	NUMBER OF POSITIONS	TAIL LENGTH ±.015/0.38	CONTACT AREA PLATING
50357-1YYYYA	YYY, NOTES 1, 2	.177/4.49	30u"/.76u GOLD
50357-3YYYYA	YYY, NOTES 1, 2	.177/4.49	50u"/1.27u GOLD
50357-5YYYYA	YYY, NOTES 1, 2	.177/4.49	30u"/.76u GXT
50357-5YYYYALF	YYY, NOTES 1, 2	.177/4.49	30u"/.76u GXT
50357-1YYYYJ	YYY, NOTES 1, 2	.120/3.05	30u"/.76u GOLD
50357-3YYYYJ	YYY, NOTES 1, 2	.120/3.05	50u"/1.27u GOLD
50357-5YYYYJ	YYY, NOTES 1, 2	.120/3.05	30u"/.76u GXT
50357-5YYYYJLF	YYY, NOTES 1, 2	.120/3.05	30u"/.76u GXT
50357-1YYYYC	YYY, NOTES 1, 2	.533/13.54	30u"/.76u GOLD
50357-3YYYYC	YYY, NOTES 1, 2	.533/13.54	50u"/1.27u GOLD
50357-5YYYYC	YYY, NOTES 1, 2	.533/13.54	30u"/.76u GXT
50357-5YYYYCLF	YYY, NOTES 1, 2	.533/13.54	30u"/.76u GXT
50357-1YYYYD	YYY, NOTES 1, 2	.733/18.62	30u"/.76u GOLD
50357-3YYYYD	YYY, NOTES 1, 2	.733/18.62	50u"/1.27u GOLD
50357-5YYYYD	YYY, NOTES 1, 2	.733/18.62	30u"/.76u GXT
50357-5YYYYDLF	YYY, NOTES 1, 2	.733/18.62	30u"/.76u GXT
50357-1YYYYG	YYY, NOTES 1, 2	.250/6.35	30u"/.76u GOLD
50357-3YYYYG	YYY, NOTES 1, 2	.250/6.35	50u"/1.27u GOLD
50357-5YYYYG	YYY, NOTES 1, 2	.250/6.35	30u"/.76u GXT
50357-5YYYYGLF	YYY, NOTES 1, 2	.250/6.35	30u"/.76u GXT

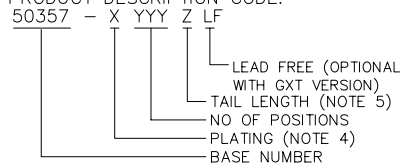


RECOMMENDED PCB LAYOUT  
ALL HOLES LOCATED ON .100/2.54 GRID  
UNLESS OTHERWISE SPECIFIED

#### NOTES:

1 THIS PRODUCT IS CONFIGURED IN SIZES OF 10 THRU 50 COLUMNS IN INCREMENTS OF ONE.  
IE: 10,11,12,13,.....49,50.

2 PRODUCT DESCRIPTION CODE:



3 HOUSING MAT'L: GLASS AND MINERAL FILLED HIGH TEMP. THERMOPLASTIC. FLAME RETARDANT PER UL94V-0. COLOR: BLACK.  
PIN MAT'L: PHOS BRONZE

4 DISTANCE CALCULATIONS:  
DIMENSION "A" = .100/2.54 X NO. OF COLUMNS + .15/3.8.  
DIMENSION "C" = .100/2.54 X NO. OF COLUMNS - .100/2.54.

5 XXXXX-XXXXXLF PRODUCT MEETS EUROPEAN UNION DIRECTIVES AND OTHER COUNTRY REGULATIONS AS DESCRIBED IN GS-22-008.

6 MANUFACTURER'S NAME AND P/N, AND LOT CODE TO APPEAR ON THIS SURFACE PER BUS-12-108.

7 FOR PRODUCT PERFORMANCE SEE PRODUCT SPECIFICATION NUMBER BUS-12-090.

8 STANDARD MATING LENGTH IS .22/5.6.  
OTHER COMMON LENGTHS AVAILABLE ARE .18/4.6 AND .26/6.6. FIRST-MATE/LAST-BREAK APPLICATIONS CAN BE DEVELOPED BY SELECTIVELY LOADING THESE VARYING MATING LENGTHS - SEE DRAWING P/N 50145. CUSTOMER MATING LENGTHS ARE AVAILABLE. CONTACT YOUR CUSTOMER SERVICE REPRESENTATIVE FOR INFORMATION.

9. THE HOUSING WILL WITHSTAND EXPOSURE TO 260° C PEAK TEMPERATURE FOR 30 SECONDS IN A WAVE SOLDER APPLICATION.

mat'l. code				surface ISO 1302 ✓	tolerance ISO 406 ISO 1101	projection ⊕	product family HPC
ltr	ecn	no	dr	date	tolerances unless otherwise specified	INCH/MM	title
J					angles linear .XX±.01/.3	scale 1:1	4 ROW VERTICAL HEADER
					0'±2' .xxx±.005/.13		CARD CONN. STYLE SOLDER TAILS PINS
					xxx±.0020/.05		dwg no sheet2 of 2 size
			dr	D.HORCHLER	7/5/05	FCI	50357 A3
			enr	D.HORCHLER	7/5/05		
			chr	T.BREWBAKER	7/5/05		
			appd	D.HORCHLER	7/5/05		
sheet index	revision sheet						type Product Customer Drawing

# Mouser Electronics

Authorized Distributor

Click to View Pricing, Inventory, Delivery & Lifecycle Information:

[FCI / Amphenol:](#)

[50357-5096JLF](#) [50357-1064C](#) [50357-1168D](#) [50357-5096J](#) [50357-5168DLF](#) [50357-1112C](#) [50357-1112J](#) [50357-1144J](#) [50357-1168A](#) [50357-5036G](#) [50357-5112A](#) [50357-5160A](#) [50357-5180A](#) [50357-5200A](#) [50357-5200J](#) [50357-1096J](#)