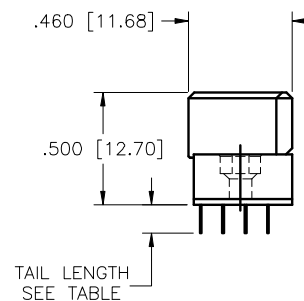
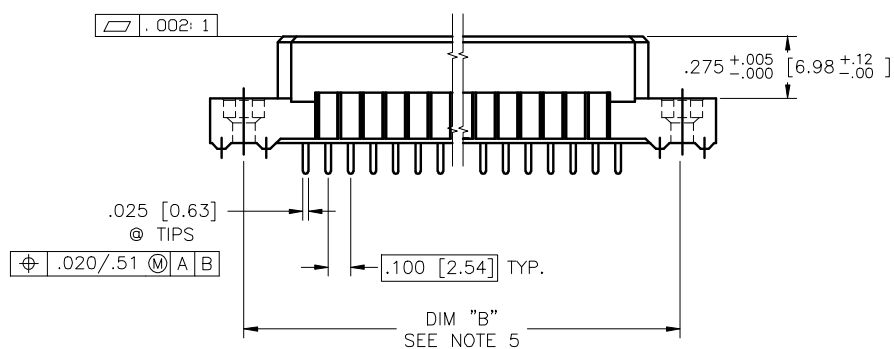
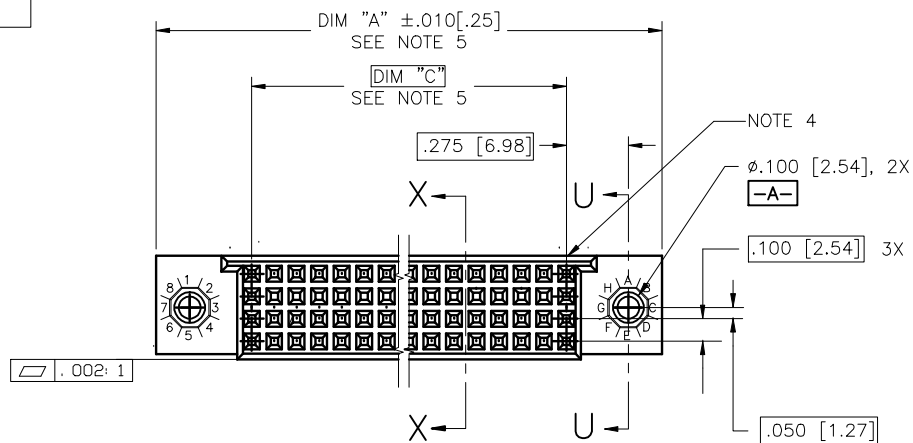


PRODUCT NUMBER
SEE TABLE



mat'l. code	NOTE 3	surface	ISO 1902	tolerance	ISO 406	projection	product family
ISO 1901		tolerances unless otherwise specified					HPC
ltr	ecn no	dr	date	angles	linear	INCH/MM	title
L	V50348	LSS	6/15/95				4 ROW VERTICAL RECEPTACLE
M	V90140	HTB	2/16/99				SOLDER TO BOARD, 0 GUIDE PIN
N	V00258	JWS	1/21/00	0' $\pm 2'$		scale 1:1	
P	V12267	MEM	9/29/01	dr	D.SHEAFFER	10/7/92	
R	V05-0755	DAI	10/14/05	engr	S.CLARK	10/7/92	
S	M06-0283	MHT	7/27/06	chr	S.CLARK	10/7/92	
T	M08-0280	AGS	9/30/08	appd	S.CLARK	10/7/92	
sheet	revision	T	T	T			FCJ
index	sheet	1	2	3			type Product Customer Drawing

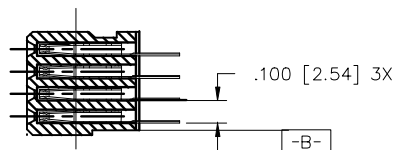
PRODUCT NUMBER
SEE TABLE

NOTES:

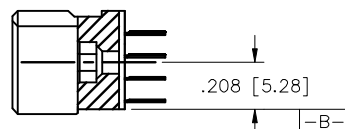
- PRODUCT NUMBERING CODE:
50388 - X YYY Z LF
LEAD FREE (OPTIONAL)
TAIL LENGTH SEE TABLE
NO. OF POSITIONS SEE NOTE 2
PLATING SEE TABLE
BASE NUMBER

- PRODUCT NUMBERING CODE FOR
SELECT LOAD PARTS:
50388 - XX YYY
LEAD FREE (OPTIONAL)
SEQUENCE NUMBER
ALWAYS XX
BASE NUMBER

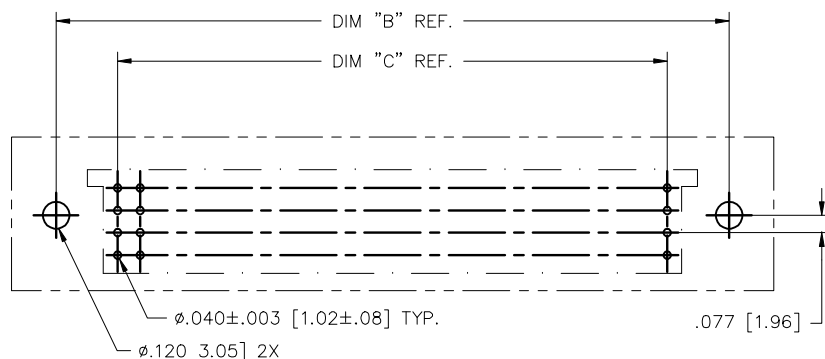
- THIS PRODUCT IS CONFIGURED IN SIZES OF
10 THRU 80 COLUMNS IN INCREMENTS OF ONE.
i.e.: 10,11,12,13,.....79,80.
- HOUSING MATERIAL: GLASS AND MINERAL FILLED
HIGH TEMP. THERMOPLASTIC. FLAME RETARDANT
PER UL94V-0. COLOR: BLACK.
CONTACT MATERIAL: BeCu
- MANUFACTURE'S NAME, P/N AND LOT CODE TO APPEAR
ON THIS SURFACE AS PER BUS-12-108.
- LENGTH FORMULAS
DIM A = .100/2.54 X NO. OF COLUMNS + .75/19.1
DIM B = .100/2.54 X NO. OF COLUMNS + .45/11.4
DIM C = .100/2.54 X NO. OF COLUMNS - .10/2.5
- THIS PRODUCT (WITH "LF" SUFFIX) MEETS EUROPEAN
UNION DIRECTIVES AND OTHER COUNTRY REGULATIONS
AS DESCRIBED IN GS-22-008.
- THIS HOUSING WILL WITHSTAND EXPOSURE TO 260° C PEAK
TEMPERATURE FOR 10-30 SECONDS IN A CONVECTION,
INFRA-RED OR VAPOR PHASE REFLOW OVEN.
- PLATING OPTION:
MAY BE EITHER GOLD OR GXT PLATED AT MANUFACTURER'S OPTION.



SECTION X-X



SECTION U-U



RECOMMENDED PCB LAYOUT
(ALL HOLES LOCATED ON .100/2.54 GRID
UNLESS OTHERWISE SPECIFIED)

mat'l. code NOTE 3				surface ISO 1902	tolerance ISO 406 ISO 1101	projection	product family HPC
ltr	ecn no	dr	date	tolerances unless otherwise specified		 INCH/MM	title
T				angles	linear		4 ROW VERTICAL RECEPTACLE
						scale 1:1	SOLDER TO BOARD, 0 GUIDE PIN
				dr	D.SHEAFFER	10/7/92	dwg no
				engr	S.CLARK	10/7/92	sheet 2 of 3 size
				chr	S.CLARK	10/7/92	50388 A3
				appd	S.CLARK	10/7/92	type
sheet	revision						Product Customer Drawing
index	sheet						

PRODUCT NUMBER	NUMBER OF POSITIONS SEE NOTE 2	TAIL LENGTH	TAIL PLATING	CONTACT PLATING NOTE 8
50388 -1YYYE	YYY	.125±.010/3.18±0.25	TIN LEAD	30u"/.76u Au
50388 -1YYYF	YYY	.145±.010/3.68±0.25	TIN LEAD	30u"/.76u Au
50388 -1YYYH	YYY	.180±.010/4.57±0.25	TIN LEAD	30u"/.76u Au
50388 -1YYYZ	YYY	.220±.010/5.59±0.25	TIN LEAD	30u"/.76u Au
50388 -3YYYE	YYY	.125±.010/3.18±0.25	TIN LEAD	50u"/1.27u Au
50388 -3YYYF	YYY	.145±.010/3.68±0.25	TIN LEAD	50u"/1.27u Au
50388 -3YYYH	YYY	.180±.010/4.57±0.25	TIN LEAD	50u"/1.27u Au
50388 -3YYYZ	YYY	.220±.010/5.59±0.25	TIN LEAD	50u"/1.27u Au
50388 -5YYYE	YYY	.125±.010/3.18±0.25	TIN LEAD	30u"/.76u GXT
50388 -5YYYELF	YYY	.125±.010/3.18±0.25	TIN	30u"/.76u GXT
50388 -5YYYF	YYY	.145±.010/3.68±0.25	TIN LEAD	30u"/.76u GXT
50388 -5YYYFLF	YYY	.145±.010/3.68±0.25	TIN	30u"/.76u GXT
50388 -5YYYH	YYY	.180±.010/4.57±0.25	TIN LEAD	30u"/.76u GXT
50388 -5YYYHLF	YYY	.180±.010/4.57±0.25	TIN	30u"/.76u GXT
50388 -5YYYZ	YYY	.220±.010/5.59±0.25	TIN LEAD	30u"/.76u GXT
50388 -5YYYZLF	YYY	.220±.010/5.59±0.25	TIN	30u"/.76u GXT

mat'l. code				surface ISO 1902		tolerance ISO 406 ISO 1101		projection		product family HPC	
NOTE 3										title	
ltr	ecn no	dr	date	tolerances unless otherwise specified				INCH/MM		4 ROW VERTICAL RECEPTACLE	
T				angles	linear	.XX±.01/XX±0.3 XXX±.005/XX±0.13 XXXX±.0020/XXX±0.051		scale 1:1		SOLDER TO BOARD, 0 GUIDE PIN	
				0'±2'						dwg no	
				dr	D.SHEAFFER	10/7/92					sheet 3 of 3
				engr	S.CLARK	10/7/92					size
				chr	S.CLARK	10/7/92					A3
				appd	S.CLARK	10/7/92					type
sheet	revision										Product Customer Drawing
index	sheet										

Mouser Electronics

Authorized Distributor

Click to View Pricing, Inventory, Delivery & Lifecycle Information:

[FCI / Amphenol:](#)

[50388-1200E](#) [50388-1200ELF](#) [50388-5080ELF](#) [50388-5128HLF](#) [50388-5200ELF](#) [50388-1260ELF](#) [50388-5128ELF](#)
[50388-1200FLF](#) [50388-5180ELF](#) [50388-5128ZLF](#)