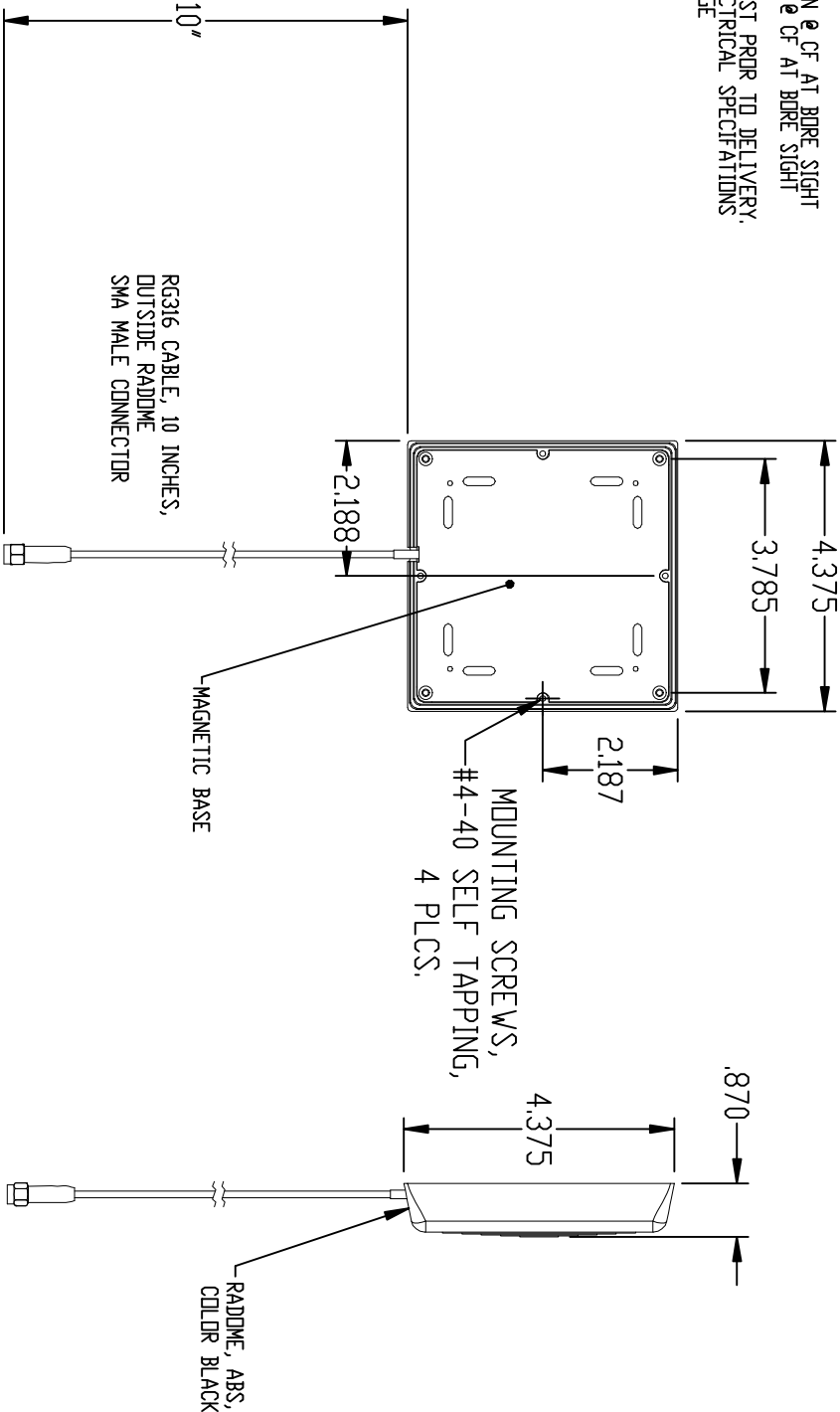


NOTES:  
1. ELECTRICAL SPECIFICATIONS:  
CENTER FREQUENCY = 868 ±4 MHz  
POLARIZATION: LHCP  
3d VSWR BW = 30 MHz  
GAIN SHALL BE 3dBC MIN @ CF AT BORE SIGHT  
A/R SHALL BE 6dB MAX @ CF AT BORE SIGHT  
ZIN = 50 OHMS  
2. 100% ELECTRICAL TEST PRIOR TO DELIVERY.  
3. FIDUPRINT AND ELECTRICAL SPECIFICATIONS  
ARE SUBJECT TO CHANGE



										8	REV. 02
										CN 64907-ENG	
										CHANGE NOTICE	
										UNLESS OTHERWISE SPECIFIED DIMENSIONS ARE IN INCHES	
										TOLERANCES UNLESS OTHERWISE SPECIFIED	
										Dim. 1 & 2 .010	
										Dim. 3 & 4 .005	
										Angles ± 0° 30'	
										DO NOT SCALE	
										THIRD ANGLE PROJECTION	
										CODE IDENT. NO. 01872	
										FAIRVIEW PENNSYLVANIA	
										Designed by Koutifman	
										Date 6-23-10	
										Assembled by ASSEMBLY, 100GFSMA	
										SW316	
										Eng. Chareson	
										Sheet 1 of 1	
										AR780868030CCLF	

# Mouser Electronics

Authorized Distributor

Click to View Pricing, Inventory, Delivery & Lifecycle Information:

[API Technologies:](#)

[AR780868030CCLF](#)