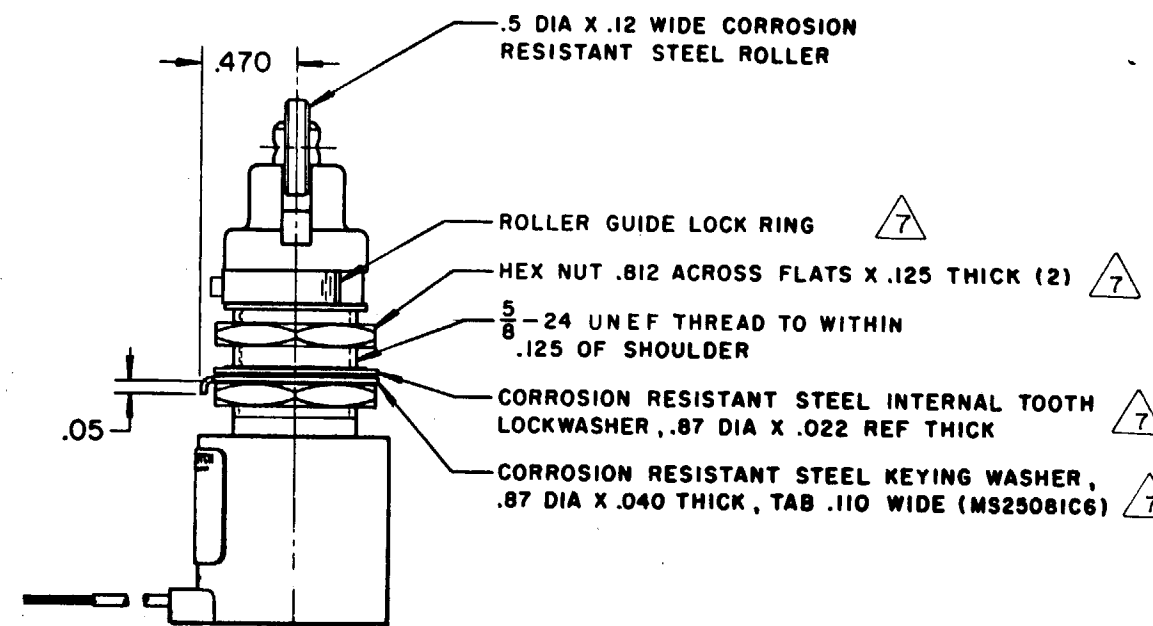
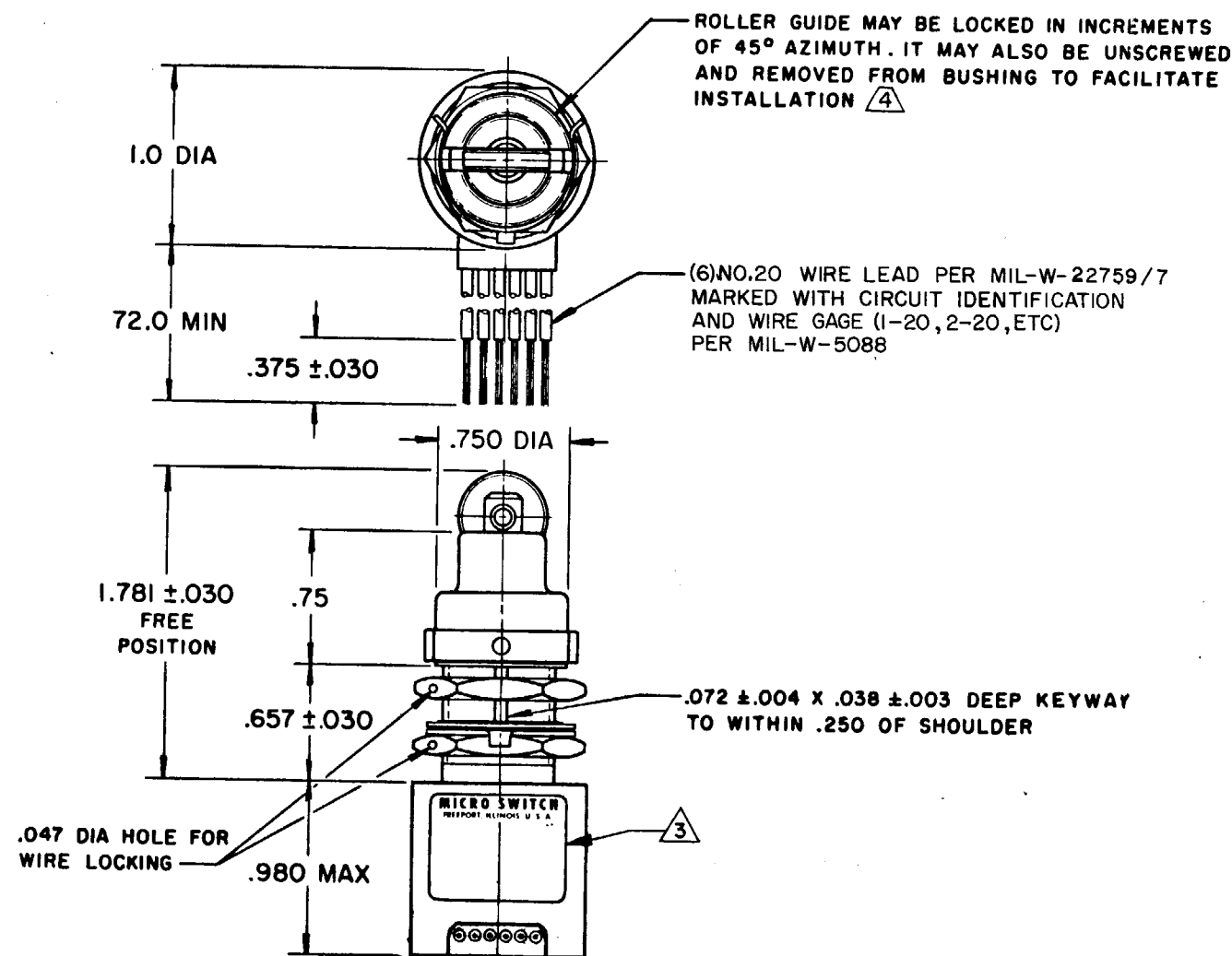
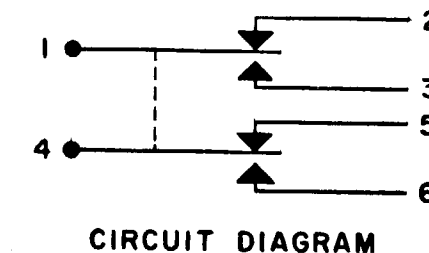


MICRO SWITCH
A DIVISION OF MINNEAPOLIS-HONEYWELL REGULATOR COMPANY
FREEPORT, ILLINOIS

SWITCH-ENCLOSED

CATALOG LISTING
21HE9-6



NOTE -

- 1 - CORROSION RESISTANT STEEL ENCLOSURE
- 2 - SWITCH SEALED PER MIL-S-8805 SYMBOL 5
- 3 - CIRCUIT DIAGRAM, CATALOG LISTING ARE SHOWN ON NAMEPLATE
- 4 - TO ADJUST ROLLER DIRECTION, REMOVE ROLLER GUIDE LOCK RING, SCREW ROLLER GUIDE DOWN AS FAR AS POSSIBLE, THEN UNSCREW TO DESIRED DIRECTION. SECURE BY REPLACING ROLLER GUIDE LOCK RING
- 5 - FOR OPERATION IN TEMPERATURES OF MINUS 65°F TO PLUS 257°F
- 6 - COINCIDENCE OF OPERATING AND RELEASING POINTS: .010 INCH OF PLUNGER TRAVEL
- 7 - HARDWARE MAYBE PACKAGED UNASSEMBLED PER MIL-S-8805

THIS DRAWING COVERS A PROPRIETARY ITEM AND IS THE PROPERTY OF MICRO SWITCH, A DIVISION OF MINNEAPOLIS-HONEYWELL REGULATOR CO. THIS DRAWING IS NOT TO BE COPIED OR USED WITHOUT THE APPROVAL OF MICRO SWITCH.

CHARACTERISTICS		ELECTRICAL DATA			SCALE	FULL
OPERATING FORCE----- 6-12 LB		CONTACT ARRANGEMENT			DO NOT SCALE PRINT	
FULL OVERTRAVEL FORCE----30 LB MAX		S P D T (2)			UNLESS OTHERWISE SPECIFIED DIMENSIONS ARE IN INCHES	
RELEASE FORCE----- 4 LB MIN						
PRETRAVEL----- .040 MAX		LOAD	28 VDC			TOLERANCES ARE: ONE PLACE (.0) ±.030 TWO PLACE (.00) ±.015 THREE PLACE (.000) ±.005 ANGLES ±
DIFFERENTIAL TRAVEL---- .020 MAX			SEA LEVEL	100,000 FT.		
OVERTRAVEL----- .250 MIN		RES	5	5		
		IND	3	3		
		MOTOR	4	4		
						WEIGHT 7.3 OZ. MAX

21HE9-6

M

DRAWING NUMBER

5

ISSUE

5

REVISIONS

A	PR-5445	8 JAN 76
B	0044351	29 NOV 78
B	0044646	5 DEC 78
D	0047573	16 JULY 80
E	0068359	7 SEP 90

SR H 24 JAN 70

SR H 24 JAN 70

SR H 24 JAN 70

SR H 24 JAN 70

SR H 24 JAN 70

SR H 24 JAN 70

SR H 24 JAN 70

SR H 24 JAN 70

SR H 24 JAN 70

Mouser Electronics

Authorized Distributor

Click to View Pricing, Inventory, Delivery & Lifecycle Information:

[Honeywell:](#)

[21HE9-6](#)