

This drawing involves proprietary design rights of Tyco Electronics Corporation, and all design, manufacture, reproduction, use and sale rights regarding the same are expressly reserved. It is submitted for a specific purpose and the recipient by accepting this drawing, assumes custody and control and agrees to take reasonable precautions; (a) that this drawing will not be copied and reproduced, in whole or in part, or its contents revealed in any manner, or to any person except to meet the purpose for which it was delivered and (b) that any special features peculiar to this design will not be incorporated in other projects without the expressed written permission of Tyco Electronics Corporation.

REVISIONS			
EC	REV	DESCRIPTION	DATE
0S1Q-0313-04	C	INITIAL RELEASE	8/26/04

7. MODULE INFORMATION

CONNECTOR	TYCO PART NUMBER	ELCON PART NUMBER	CATALOG MODULE #	QTY	SIZE NO.	CONTACT QTY	MATING PIN	MAX. CURRENT (PER CONTACT)	CONTACT SPACING	VOLTAGE RATING*
PIN	6651843-1	478-0454-10100C	FP0151	2	8	2	1.25 X 7.00 [.049 X .276]	35 AMPERES	7.50 [2953]	250 VOLTS
			FP0152	1		1				
			FP0502	1	STRAIGHT GUIDE SOCKET					

*IAW IEC-950

NOTES: UNLESS OTHERWISE SPECIFIED.

1. PART NUMBER CHANGES AND OR DESIGN CHANGES AFFECTING ITEM INTERCHANGEABILITY REQUIRE PRIOR ELCON APPROVAL AND AUTHORIZATION BY REVISION TO THIS DRAWING.

2. MATERIALS:

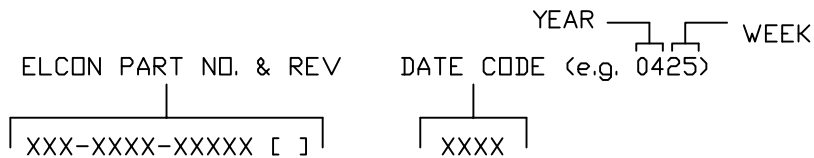
INSULATORS: THERMOPLASTIC, GLASS REINFORCED, COLOR BLACK.
UL94V-0 FLAMMABILITY RATED.
SOLDER SIGNAL PIN: BRASS ALLOY.
POWER CONTACTS: PHOSPHOR BRONZE ALLOY.

3. FINISHES:

CONTACTS: GOLD PLATED PER TYCO SPEC 112-162-5, .00076 [.000030] MIN THICK
OVER NICKEL PER TYCO SPEC 112-25-2, .00130 [.000050] MIN THICK.
SOLDER TAILS: TIN PLATED PER LEAD FREE TYCO SPEC. 112-65-1, MATT-FINISH
.0030 TO .0043 [.000120 TO .000170] THICKNESS.

4. ALL POWER BLADES ARE ONE-PIECE CONSTRUCTION.

5. ITEMS PROVIDED TO THIS SPECIFICATION TO BE PERMANENTLY IDENTIFIED PER THE FOLLOWING IDENTIFIER:

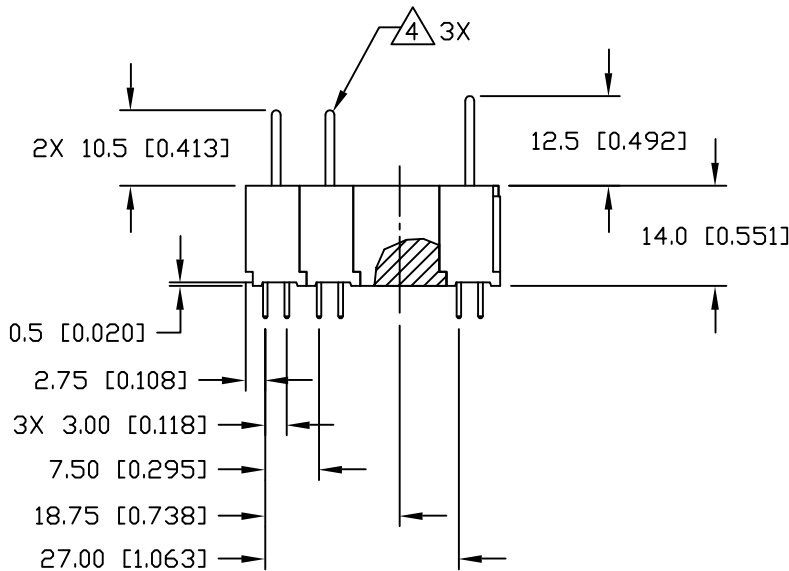
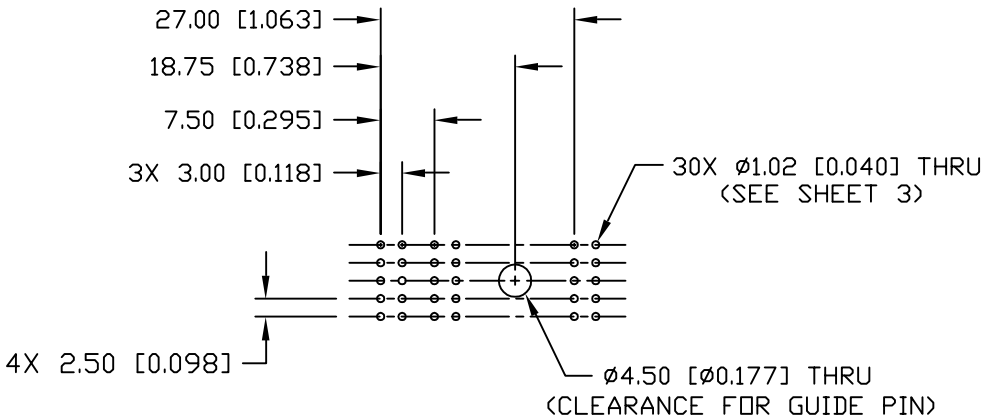
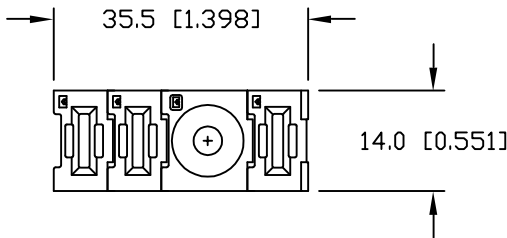
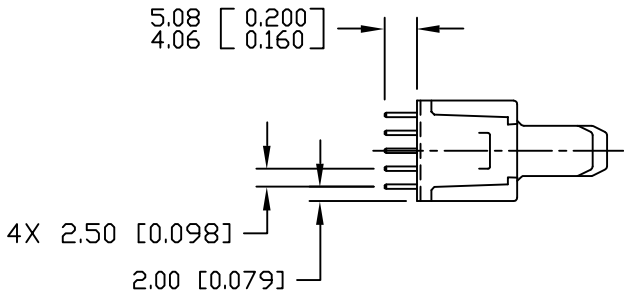


6. THIS CONNECTOR MATES WITH SOCKET CONNECTORS PN 278-0454-00200/00400.

<div>← MM INCH → OR MM [INCH]</div> <div></div> <div>THIRD ANGLE PROJECTION</div> <div>UNLESS OTHERWISE SPECIFIED DIMENSIONS ARE IN METRIC [INCHES]</div> <div>TOLERANCES</div> <div>ANGLES ± .5°</div> <div>DECIMALS</div> <div>.XX ± .25 [.010]</div> <div>.X ± .5 [.020]</div>	DRAWN R.F.A.	DATE 08/25/04	<div> Tyco Electronics Corporation Menlo Park, Ca 94025</div>			
	CHECKED		TITLE PIN CONNECTOR, FLATPAQ STRAIGHT, SOLDER TAILS PN: 478-0454-10100C			
	APPROVED					
	APPROVED D. CHAU	08/26/04				
	DCA APPROVED M. ALIM	09/07/04	SIZE B	DWG NUMBER C = 6651843		REV. C
ACAD FILE NUMBER C6651843C.DWG		DWG SCALE 1 = 1		SH 1 OF 3		

This drawing involves proprietary design rights of Tyco Electronics Corporation, and all design, manufacture, reproduction, use and sale rights regarding the same are expressly reserved. It is submitted for a specific purpose and the recipient by accepting this drawing, assumes custody and control and agrees to take reasonable precautions; (a) that this drawing will not be copied and reproduced, in whole or in part, or its contents revealed in any manner, or to any person except to meet the purpose for which it was delivered and (b) that any special features peculiar to this design will not be incorporated in other projects without the expressed written permission of Tyco Electronics Corporation.

REVISIONS			
EC	REV	DESCRIPTION	DATE
		SEE SHEET 1	



PRINTED CIRCUIT LAYOUT

<div>← MM INCH</div> <div>OR MM [INCH]</div> <div></div> <div>THIRD ANGLE PROJECTION</div> <div>UNLESS OTHERWISE SPECIFIED DIMENSIONS ARE IN METRIC [INCHES]</div> <div>TOLERANCES</div> <div>ANGLES ± .5°</div> <div>DECIMALS</div> <div>.XX ± .25 [.010]</div> <div>.X ± .5 [.020]</div>	DRAWN R.F.A.	DATE 08/25/04	<div><div>tyco</div><div>Electronics</div></div> <div>Tyco Electronics Corporation Menlo Park, Ca 94025</div> <div>ELCON</div>		
	CHECKED		TITLE		
	APPROVED		PIN CONNECTOR, FLATPAQ STRAIGHT, SOLDER TAILS PN: 478-0454-10100C		
	APPROVED		SIZE	DWG NUMBER	REV.
	D. CHAU	08/26/04	B	C = 6651848	C
DCA APPROVED	09/07/04				
M. ALIM					
ACAD FILE NUMBER C6651843C.DWG			DWG SCALE 1 = 1	SH 2 OF 3	

Mouser Electronics

Authorized Distributor

Click to View Pricing, Inventory, Delivery & Lifecycle Information:

[TE Connectivity:](#)

[6651843-1](#)