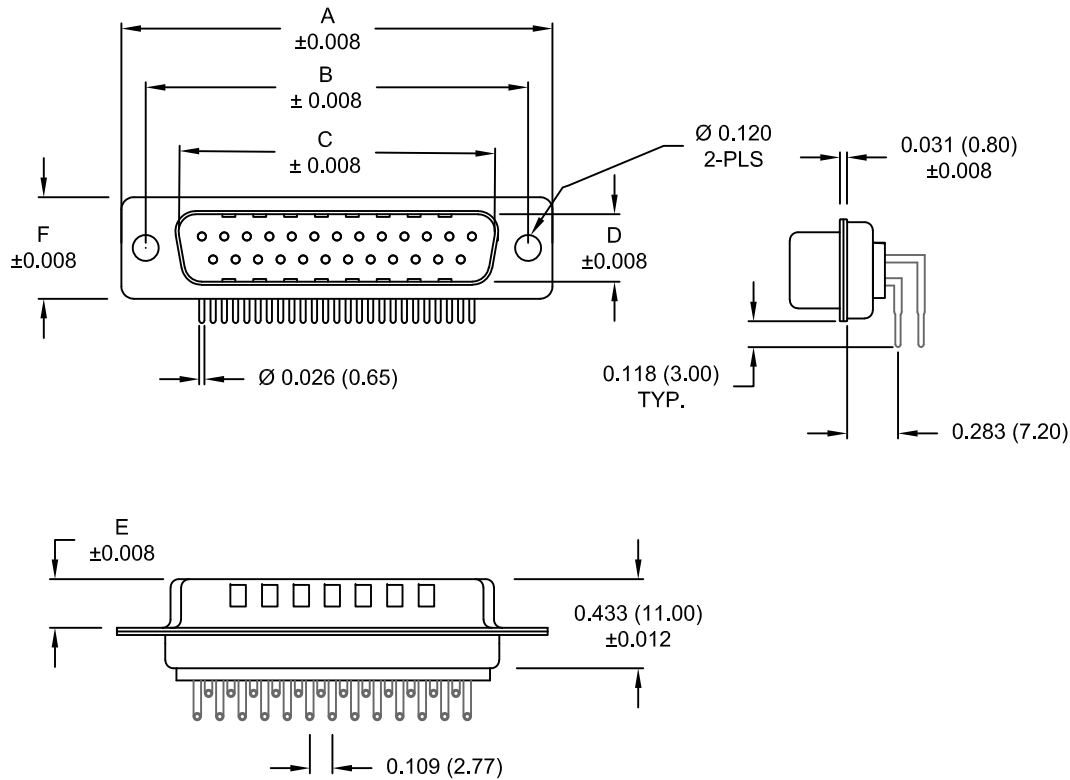


DESCRIPTION: MALE - 0.283 RIGHT ANGLE / MACHINED - ECONOMY



DIMENSIONS						
No. OF PINS	A	B	C	D	E	F
9	1.213	0.984	0.665	0.327	0.240	0.492
	30.80	25.00	16.90	8.30	6.10	12.50
15	1.543	1.311	0.994	0.327	0.240	0.492
	39.20	33.30	25.25	8.30	6.10	12.50
25	2.089	1.852	1.533	0.327	0.240	0.492
	53.05	47.05	38.95	8.30	6.10	12.50

**773-EYY-1 1 3 R YY 1**

SERIES \_\_\_\_\_  
POSITIONS \_\_\_\_\_  
E09 \_\_\_\_\_  
E15 \_\_\_\_\_  
E25 \_\_\_\_\_  
GENDER \_\_\_\_\_  
1 = MALE \_\_\_\_\_  
TERMINATION \_\_\_\_\_  
1 = THROUGH HOLE \_\_\_\_\_  
SHELL PLATING \_\_\_\_\_  
3 = NICKEL (GROUND INDENTS) \_\_\_\_\_  
RoHS COMPLIANT \_\_\_\_\_  
HARDWARE OPTIONS \_\_\_\_\_  
00 = NO HARDWARE \_\_\_\_\_  
01 = .065" CLINCH NUT (BOARD SIDE) \_\_\_\_\_  
0A = .098" CLINCH NUT (BOARD SIDE) \_\_\_\_\_  
14 = SHORT BRACKET WITH 4-40 SCREW LOCK \_\_\_\_\_  
46 = BRACKET WITH 4-40 INSERT & BOARDLOCK \_\_\_\_\_  
PLATING OPTIONS \_\_\_\_\_  
1 = GOLD FLASH \_\_\_\_\_  
2 = 30 MICRO-INCH GOLD \_\_\_\_\_

**MEETS IP67 STANDARDS**  
(SEE PAGE 3 FOR SEALING DETAILS)

**MATERIAL:**

SHELL: STEEL, NICKEL PLATED  
INSULATOR: UL 94V-O RATED, WHITE PA6T  
PROCESS TEMP.: 260° C  
CONTACT: BRASS  
SEALING MATERIAL: F08 FLEXIBLE ADHESIVE

**ELECTRICAL:**

CURRENT RATING: 5 AMPS  
CONTACT RESISTANCE: 10 mOhms Max.  
INSULATION RESISTANCE: 5 GOhms min.  
VOLTAGE: 1000VAC FOR 1 MINUTE  
TEMPERATURE: -55° C TO 125° C

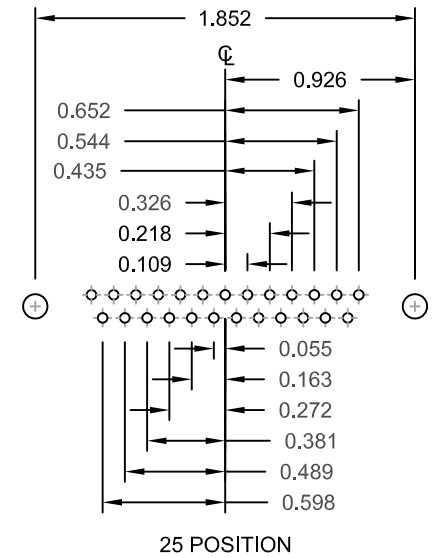
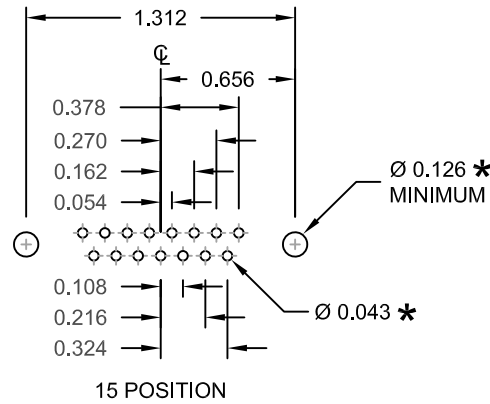
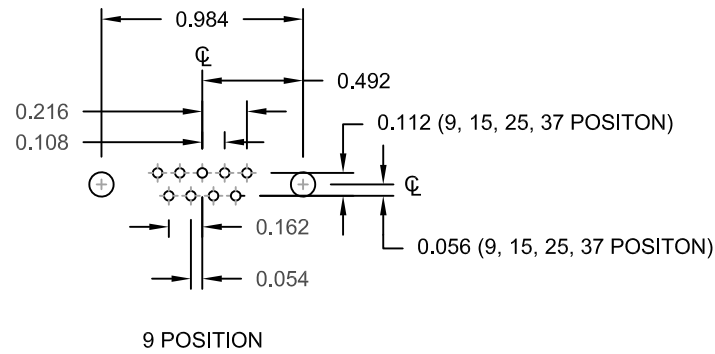
**RoHS COMPLIANT**

UNITS = inch [mm]

**DO NOT SCALE FROM DRAWING**

	THESE DRAWINGS AND SPECIFICATIONS ARE THE PROPERTY OF NorComp AND SHALL NOT BE REPRODUCED, COPIED OR USED AS THE BASIS FOR THE MANUFACTURE OR SALE OF APPARATUS WITHOUT WRITTEN PERMISSION.	DRAWN: <b>PAM JENKINS</b>	DATE: <b>06-29-09</b>
	<b>NorComp</b>	SCALE: NTS	SHEET OF 1 4
		DWG NO. <b>773-EYY-113RYY1</b>	


DESCRIPTION: PCB LAYOUT - RIGHT ANGLE



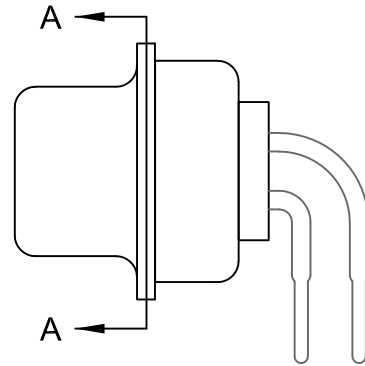
UNITS = inch

\* TYP.  
SUGGESTED SIZE  
MAY NOT BE SUITABLE FOR ALL APPLICATIONS

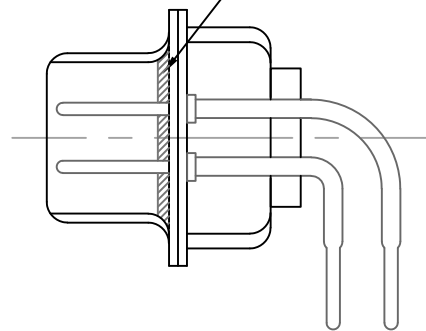
DO NOT SCALE FROM DRAWING

	THESE DRAWINGS AND SPECIFICATIONS ARE THE PROPERTY OF NorComp AND SHALL NOT BE REPRODUCED, COPIED OR USED AS THE BASIS FOR THE MANUFACTURE OR SALE OF APPARATUS WITHOUT WRITTEN PERMISSION.		DRAWN: PAM JENKINS	DATE: 06-29-09
	<h1>NorComp</h1>		SCALE: NTS	SHEET 2 OF 4
DWG NO. 773-EYY-113RYY1				

DESCRIPTION: IP67 - MALE - RIGHT ANGLE - MACHINED - ECONOMY - SEALING PROCESS




FRONT SEAL APPLIED OVER INSULATOR AND BETWEEN FRONT & REAR SHELLS



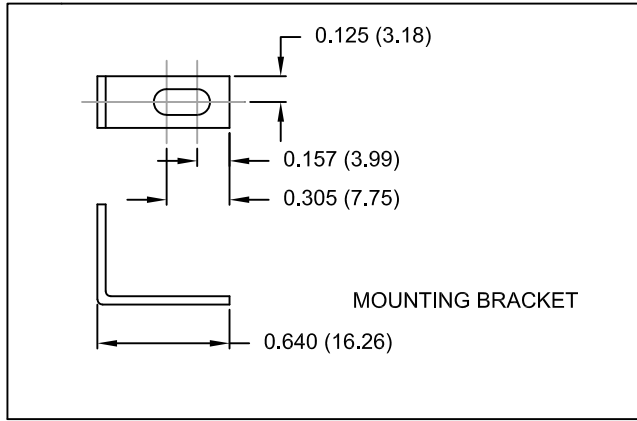
DETAIL A-A

DO NOT SCALE FROM DRAWING

	THESE DRAWINGS AND SPECIFICATIONS ARE THE PROPERTY OF NorComp AND SHALL NOT BE REPRODUCED, COPIED OR USED AS THE BASIS FOR THE MANUFACTURE OR SALE OF APPARATUS WITHOUT WRITTEN PERMISSION.	DRAWN: PAM JENKINS		DATE: 06-29-09	
		SCALE: NTS		SHEET OF 3 4	
<b>NorComp</b>		DWG NO. 773-EYY-113RYY1			
		REV 12			

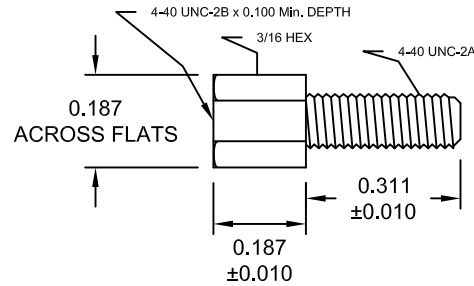
DESCRIPTION: IP67 - MALE - RIGHT ANGLE - MACHINED - ECONOMY - HARDWARE OPTIONS

REPLACE -YY IN LAST 3 DIGITS WITH OPTION CHOSEN



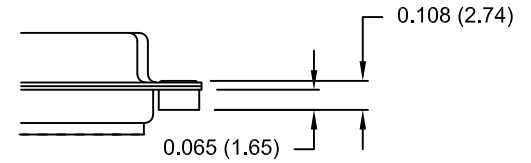
MOUNTING BRACKET

14Y = SHORT BRACKET & 4-40 SCREWLOCK

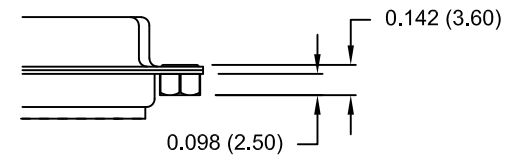


CLINCH-NUT HAS 4-40 INTERNAL THREADS

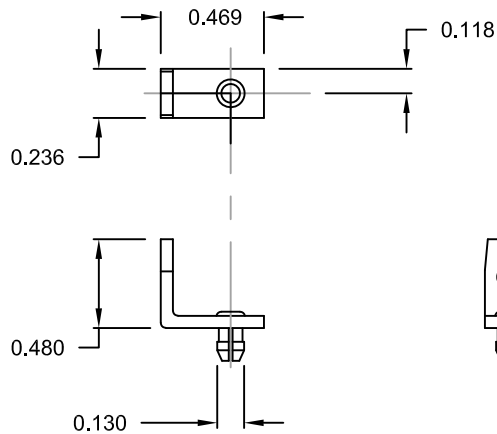
01X ..... 0.065" (BOARD SIDE)



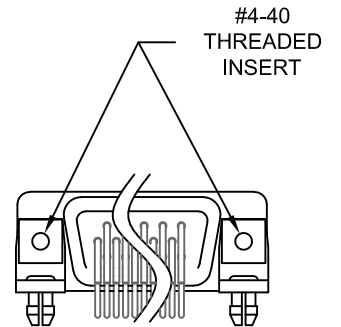
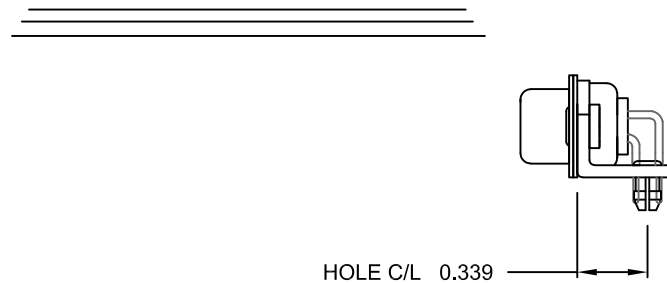
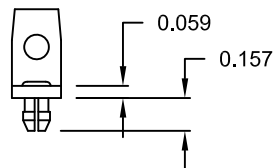
0AX ..... 0.098" (BOARD SIDE)



46 = BRACKET WITH 4-40 INSERT AND BOARDLOCK



MOUNTING BRACKET WITH BOARD LOCK



BRACKETS MOUNTED ON CONNECTOR

DO NOT SCALE FROM DRAWING

UNITS = inch [mm]



THESE DRAWINGS AND SPECIFICATIONS ARE THE PROPERTY OF NorComp AND SHALL NOT BE REPRODUCED, COPIED OR USED AS THE BASIS FOR THE MANUFACTURE OR SALE OF APPARATUS WITHOUT WRITTEN PERMISSION.

DRAWN: PAM JENKINS		DATE: 06-29-09	
SCALE: NTS	SHEET 4	OF 4	REV 12
DWG NO. 773-EYY-113RYY1			

NorComp

# Mouser Electronics

Authorized Distributor

Click to View Pricing, Inventory, Delivery & Lifecycle Information:

[NorComp:](#)

[773-E09-113R001](#) [773-E15-113R001](#) [773-E25-113R001](#) [773-E15-113R141](#) [773-E15-113R011](#) [773-E25-113R011](#)  
[773-E25-113R141](#) [773-E09-113R141](#) [773-E09-113R011](#)