

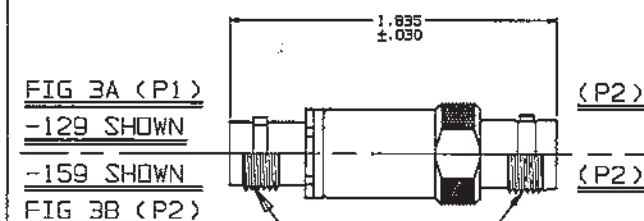
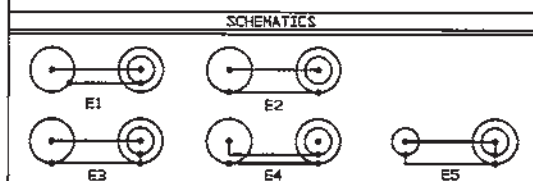
RED INDICATES ORIGINAL

QWG SIZE
C

DATA CONTAINED IN THIS DOCUMENT IS
PROPRIETARY TO TROMPETER ELECTRONICS INC.
AND SHALL NOT BE DISCLOSED, COPIED OR USED
FOR REPRODUCTION OR MANUFACTURE WITHOUT
EXPRESS WRITTEN PERMISSION.

REVISIONS			12-01	SH 1
REV	ED	DESCRIPTION	OWN	APPROVED
J	11191	ADDED CJ70TL, -201 THRU -220; ADDED ITEM 34; SEE ECO	OKC	Bm; Fw
				10/26/95

P2 CONN TYPE	FIG NO	P1 CONN TYPE																			
		BJ20					UBJ20					BJ40					UBJ40				
		SCHEMATICS																			
		E1	E2	E3	E4	E5	E1	E2	E3	E4	E5	E1	E2	E3	E4	E5	E1	E2	E3	E4	E5
		DASH NUMBERS																			
BJ74	1A	-1	-2	-3	-4	-189	-5	-8	-7	-8	-170	-9	-10	-11	-12	-171	-13	-14	-15	-16	-172
BJ74TL	1A	-17	-18	-19	-20	-173	-21	-22	-23	-24	-174	-25	-26	-27	-28	-175	-29	-30	-31	-32	-176
BJ74FL	1A	-33	-34	-35	-36	-177	-37	-38	-39	-40	-178	-41	-42	-43	-44	-179	-45	-46	-47	-48	-180
BJ74	1B	-40	-50	-51	-52	-181	-53	-54	-55	-56	-182	-57	-58	-59	-60	-183	-61	-62	-63	-64	-184
BJ79	2A	-65	-66	-67	-68	-185	-69	-70	-71	-72	-186	-73	-74	-75	-76	-187	-77	-78	-79	-80	-188
BJ79TL	2A	-81	-82	-83	-84	-189	-85	-86	-87	-88	-190	-89	-90	-91	-92	-191	-93	-94	-95	-96	-192
BJ79FL	2A	-97	-98	-99	-100	-193	-101	-102	-103	-104	-194	-105	-106	-107	-108	-195	-109	-110	-111	-112	-196
BJ79	2B	-113	-114	-115	-116	-197	-117	-118	-119	-120	-198	-121	-122	-123	-124	-199	-125	-126	-127	-128	-200
CJ70	3A	-129	-130	-131	-132	-133	-134	-135	-136	-137	-138	-139	-140	-141	-142	-143	-144	-145	-146	-147	-148
CJ70	3B	-149	-150	-151	-152	-153	-154	-155	-156	-157	-158	-159	-160	-161	-162	-163	-164	-165	-166	-167	-168
CJ70TL	3A	-201	-202	-203	-204	-205	-206	-207	-208	-209	-210	-211	-212	-213	-214	-215	-216	-217	-218	-219	-220

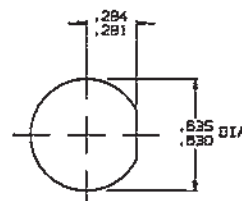


INCH	MM
.005	0.13
.030	0.76
.109	2.77
.140	3.56
.218	5.54
.221	5.61
.281	7.14
.284	7.21
.505	12.83
.510	12.95
.593	15.06
.625	15.88
.830	21.00
.835	21.13
.887	22.45
.750	19.05
.800	20.32
1.835	46.81

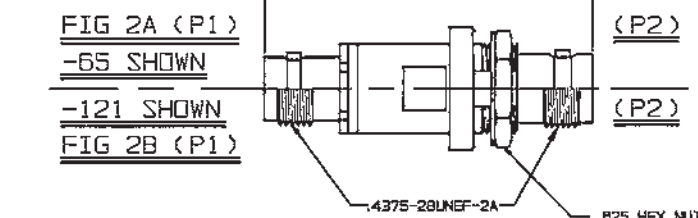
- △ FOR OPTIONAL GROUND
TERMINAL ADD PREFIX "G"
TO DASH NO (-G1 ETC)
- BETWEEN SERIES ADAPTER,
50 & 75 OHM
BNC/TNC COAXIAL JACK TO
CONCENTRIC TWINAX/TRIAX INSULATED &
NONINSULATED BULKHEAD MOUNT JACK

2. FINISH: TFS-1A (NICKEL)

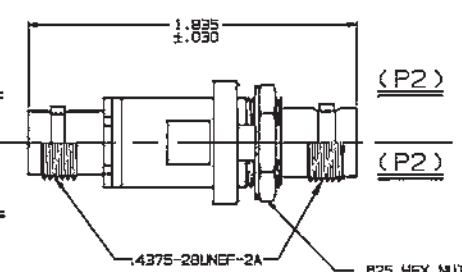
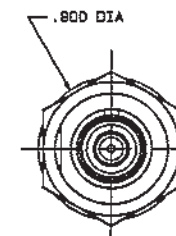
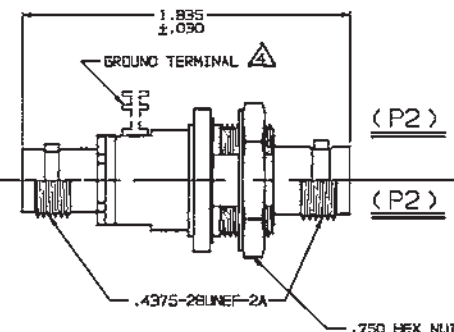
1. ALL DIM ARE IN INCHES



RECOMMENDED
PANEL CUTOUT
FOR -1 THRU -64
MAX PNL THK .140



RECOMMENDED
PANEL CUTOUT
FOR -65 THRU -128
MAX PNL THK .150



QTY	DESCRIPTION	PART NUMBER	ITEM
TOL UNLESS SPECIFIED X .005 X .005 X .005 X .005 X .005	TROMPETER RF connectivity	ADAPTERS: U-BJ20/40 TO *70* SERIES BULKHEAD MOUNT	
DWN OKC B-1-95	MATERIAL	DATE IDENT	DRAWING NO.
CHK Bm 10-4-95	14949	12-01	REV J
ENGR	SCALE 2/1	DATE 6/17/85	SHEET 1 OF 2
APPR			

Mouser Electronics

Authorized Distributor

Click to View Pricing, Inventory, Delivery & Lifecycle Information:

[Cinch Connectivity Solutions:](#)

[ADBJ79-E1-UBJ20](#)