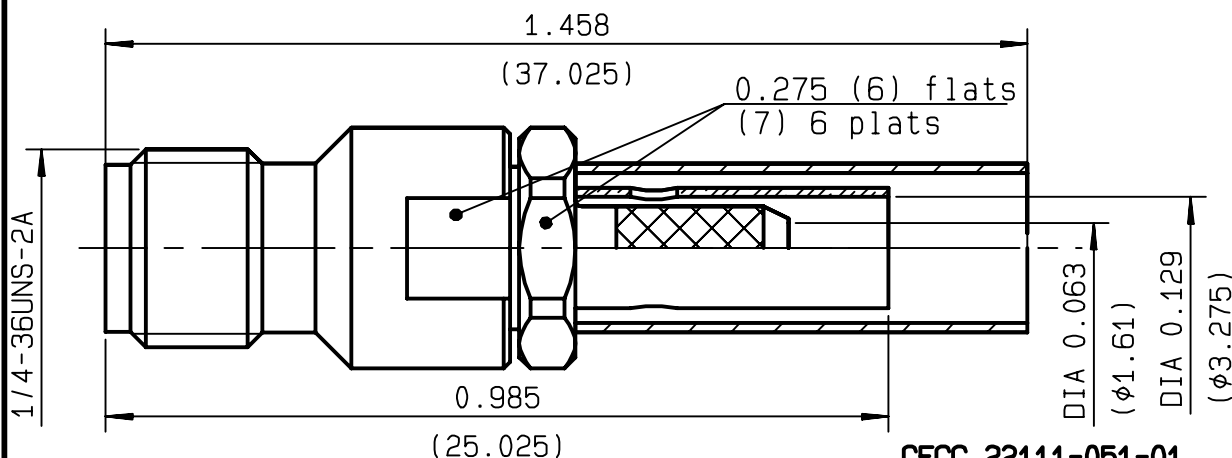


**STRAIGHT JACK CRIMP OR SOLDER TYPE
CABLE 2.6/50 S**
R125.236.000
SERIES SMA


CECC 22111-051-01

QUALITE H 50 Ω 

NOMINAL IMPEDANCE	50	Ω
FREQUENCY RANGE	0-12.4	GHz
TEMPERATURE RATING	-65/+165	$^{\circ}\text{C}$
V.S.W.R	1.15 + .02 x F(GHz)Maxi	
RF INSERTION LOSS	0.06 \sqrt{F} (GHz) dB Maxi	
VOLTAGE RATING	250	Veff Maxi
DIELECTRIC WITHSTANDING VOLTAGE	750	Veff Mini
INSULATION RESISTANCE	5000	M Ω Mini
HERMETIC SEAL	NA	Atm.cm ³ /s
LEAKAGE (pressurized only)	NA	
MECHANICAL DURABILITY	500	Cycles
WEIGHT		gr
SPECIFICATION		

CABLES : **KX 22A**
RG 188
RG 316

OTHERS CHARACTERISTICS

CABLE RETENTION	90	N Mini
CENTER CONTACT RETENTION		
Axial force - mating end	27	N Mini
Axial force - opposite end	27	N Mini
Torque	NA	cm.N Mini
RECOMMENDED TORQUES		
Mating	NA	cm.N
Panel nut	NA	cm.N
Clamp nut	100	cm.N

CONNECTOR PARTS. MATERIALS

BODY	STAINLESS STEEL
OUTER CONTACT	
CENTER CONTACT	BERYLLIUM COPPER
INSULATOR	PTFE
GASKET	
OTHERS PIECES	BRASS

FINISH (all values are given in micrometers)

GOLD 0.5 OVER NICKEL 2
GOLD 1.3 OVER NICKEL 2
-
-
GOLD 0.5 OVER NICKEL 2

PICTON

ISSUE
9901E03
CREATION DATE
11/12/1990

FILE PART-NUMBER


RADIALL®

The information given here is subject to change without notice.
 Design changes may be in order to improve the product.

Connect to the future

**R125.236.000**ISSUE **9901E03**

SERIES

SMA

HEATSHRINK SLEEVING

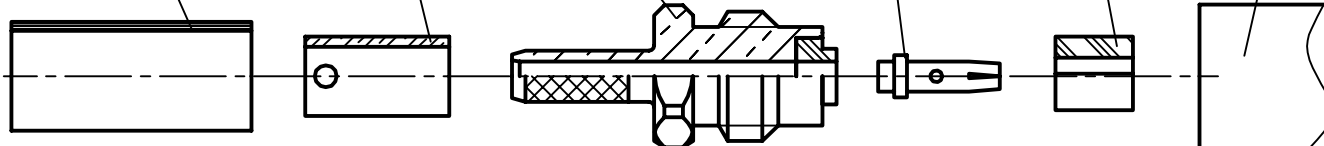
FERRULE

CRIMP BACKNUT

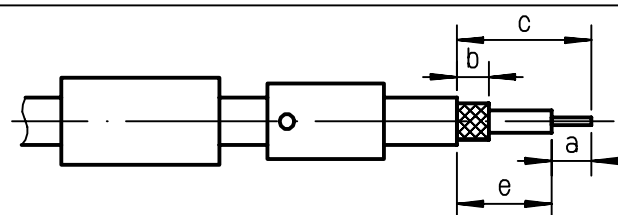
CENTER CONTACT

FRONT INSULATOR

BODY

**①**

Slide the heatshrink sleeving and the ferrule onto the cable
 Ferrule holes to the front if SOLDER.
 Ferrule holes to the rear if CRIMP.
 Strip the cable .



Stripping	a	b	c	d	e
inch	0.138	0.276	0.531	0	0.394
mm	3.5	7	13.5		10

②

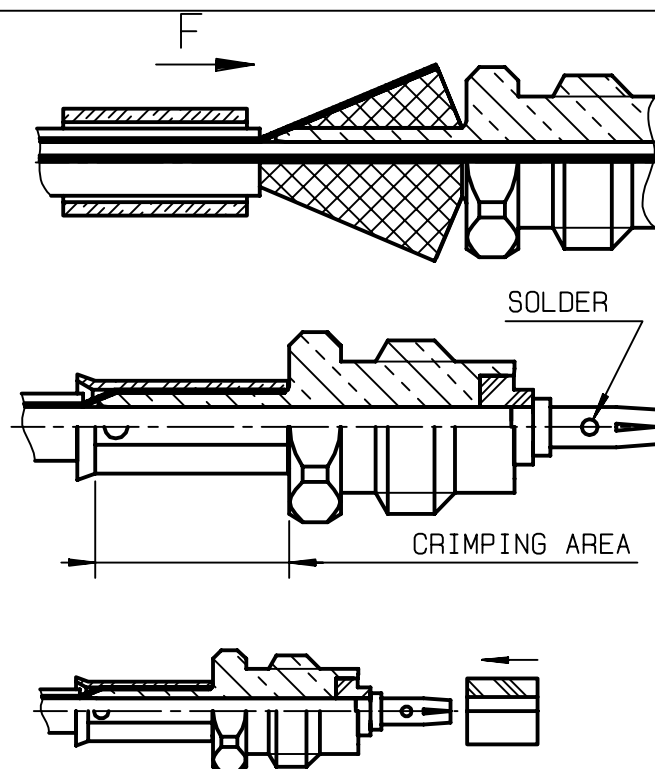
Fan the braid .

Slide the back body between dielectric and braid .

Put the cable against the insulator.
 Slide ferrule over the braid (in direction F)
 Crimp ferrule with RADIALL crimping tool R282 211 or crimping tool R282 293 000
 (M22520/5-01) + dies R282 235 003
 (M22520/5-03) Hex .128

Slide the center contact on the cable until it bottoms against insulator .
 Solder the center contact.

Slide the front insulator on the center contact.

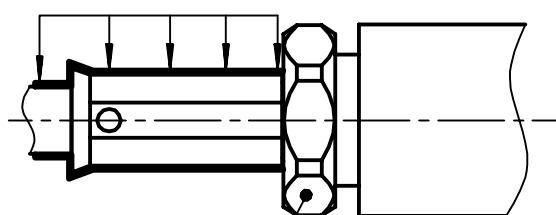
**③**

Screw the sub-assembly into the connector body
 (recommended coupling torque:
 7.08 to 10.16 in.lb

Cut the excess of braid.

Slide sleeve over ferrule and heatshrink in place.

SHRINK THE HEATSHRINK SLEEVE



Hex. : .276/ flats

Mouser Electronics

Authorized Distributor

Click to View Pricing, Inventory, Delivery & Lifecycle Information:

Radial:

[R125236000](#) [R125236000W](#)