

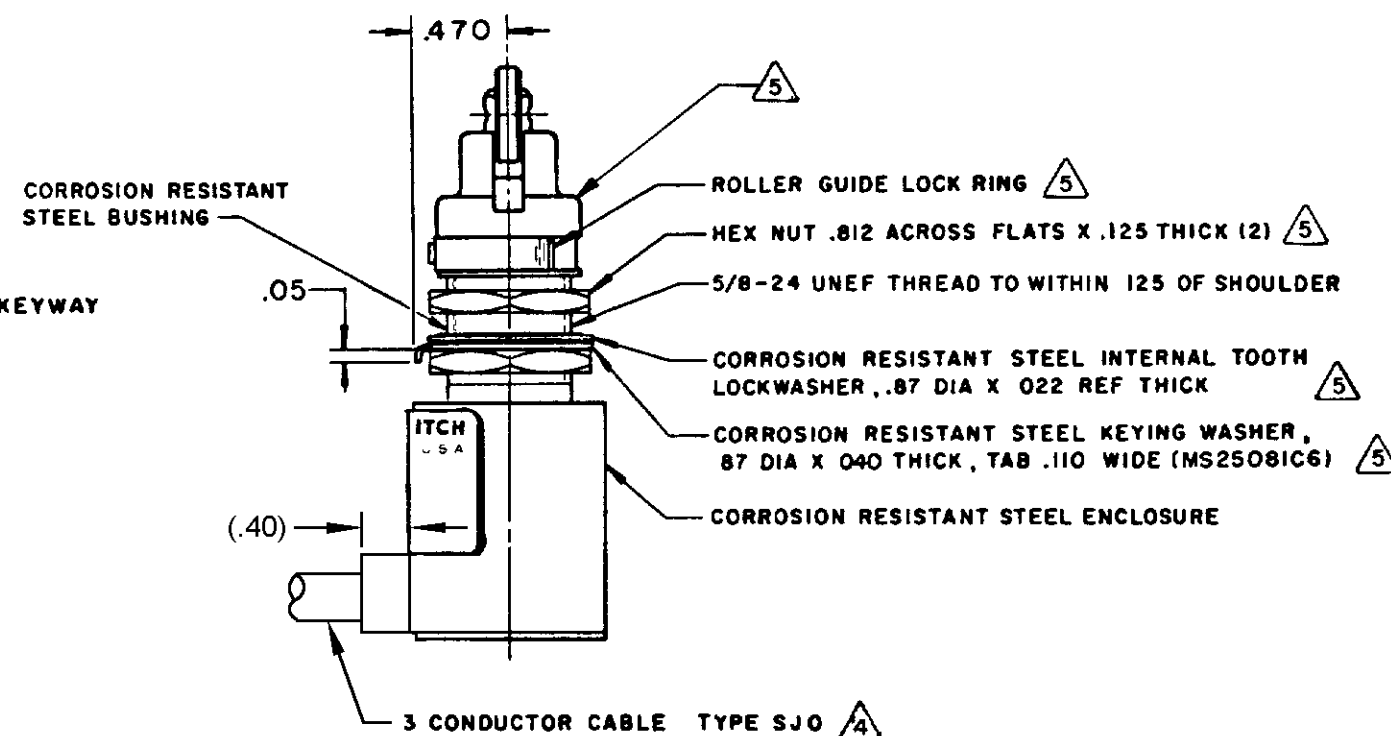
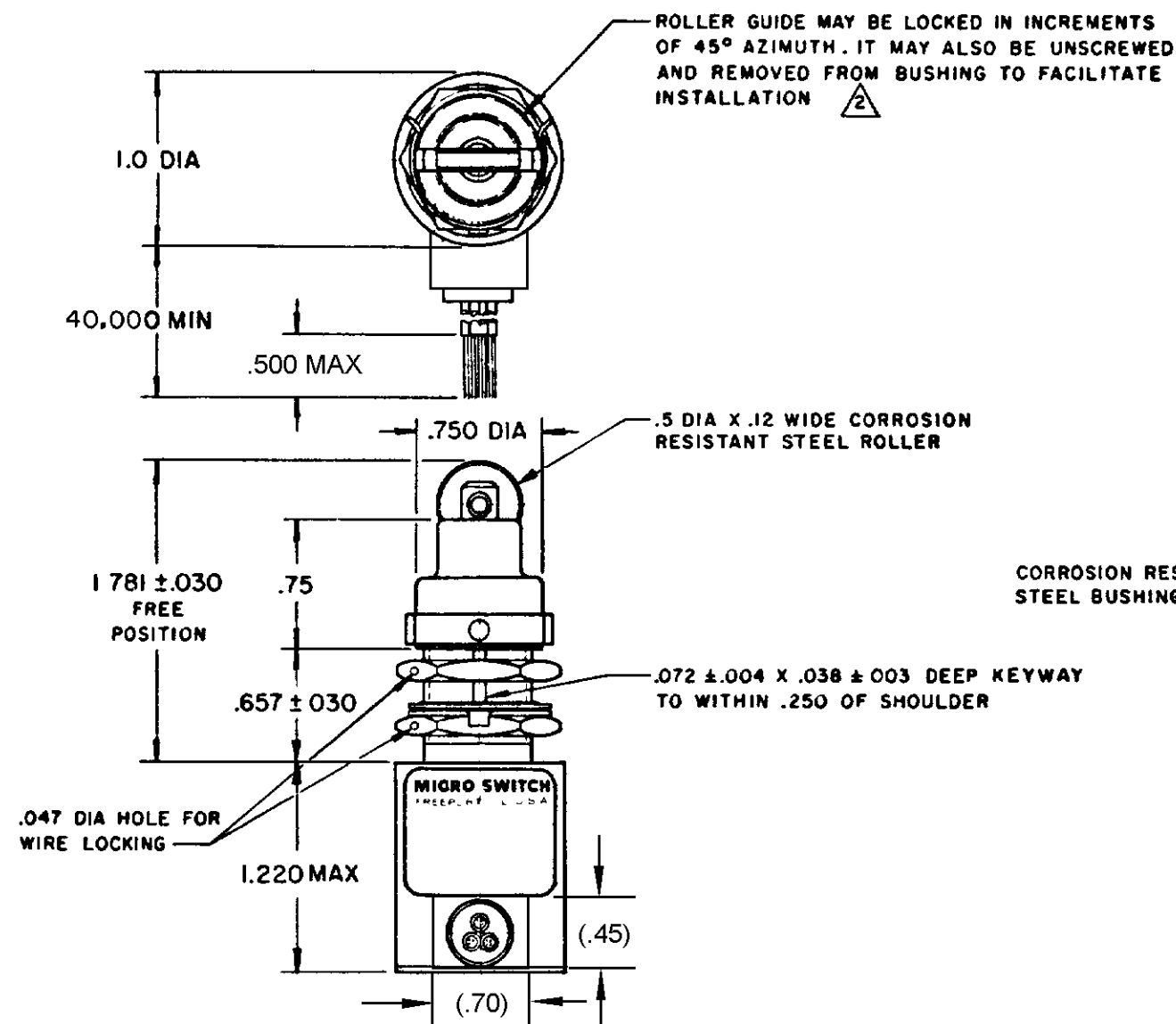
MICRO SWITCH

FED. MFR CODE 91929

SWITCH-ENCLOSED

CATALOG LISTING
21 CH 28BLACK ——— WHITE
GREEN ———

CIRCUIT DIAGRAM



NOTES

- 1 - SWITCH SEALED PER MIL-PRF-8805 SYMBOL 3
- 2 - TO ADJUST ROLLER DIRECTION, REMOVE ROLLER GUIDE LOCK RING, SCREW ROLLER GUIDE DOWN AS FAR AS POSSIBLE, THEN UNSCREW TO DESIRED DIRECTION. SECURE BY REPLACING ROLLER GUIDE LOCK RING
- 3 - CIRCUIT DIAGRAM, CATALOG LISTING AND DATE CODE ARE SHOWN ON NAMEPLATE
- 4 - LEAD WIRES COLOR CODED TO SHOW LEAD IDENTIFICATION
- 5 - HARDWARE MAY BE PACKAGED UNASSEMBLED PER MIL-PRF-8805

THIS DRAWING COVERS A PROPRIETARY ITEM AND IS THE PROPERTY OF MICRO SWITCH, A DIVISION OF MINNEAPOLIS-HONEYWELL REGULATOR CO. THIS DRAWING IS NOT TO BE COPIED OR USED WITHOUT THE APPROVAL OF MICRO SWITCH.

CHARACTERISTICS		ELECTRICAL DATA		SCALE	FULL
OPERATING FORCE ——— 6-12 LB		CONTACT ARRANGEMENT		DO NOT SCALE PRINT	
FULL OVERTRAVEL FORCE ——— 30 LB MAX		S P D T		UNLESS OTHERWISE SPECIFIED	
RELEASE FORCE ——— 4 LB MIN		28 VDC		DIMENSIONS ARE IN INCHES	
PRETRAVEL ——— .040 MAX		LOAD	SEA LEVEL	TOLERANCES ARE:	
DIFFERENTIAL TRAVEL ——— .020 MAX		RES	4	ONE PLACE (.0)	2.000
OVERTRAVEL ——— .250 MIN		IND	2	TWO PLACE (.00)	2.018
		MOTOR	4	THREE PLACE (.000)	2.008
				ANGLES	±
				WEIGHT 9.0 OZ MAX	

Mouser Electronics

Authorized Distributor

Click to View Pricing, Inventory, Delivery & Lifecycle Information:

[Honeywell:](#)

[21CH28](#)