

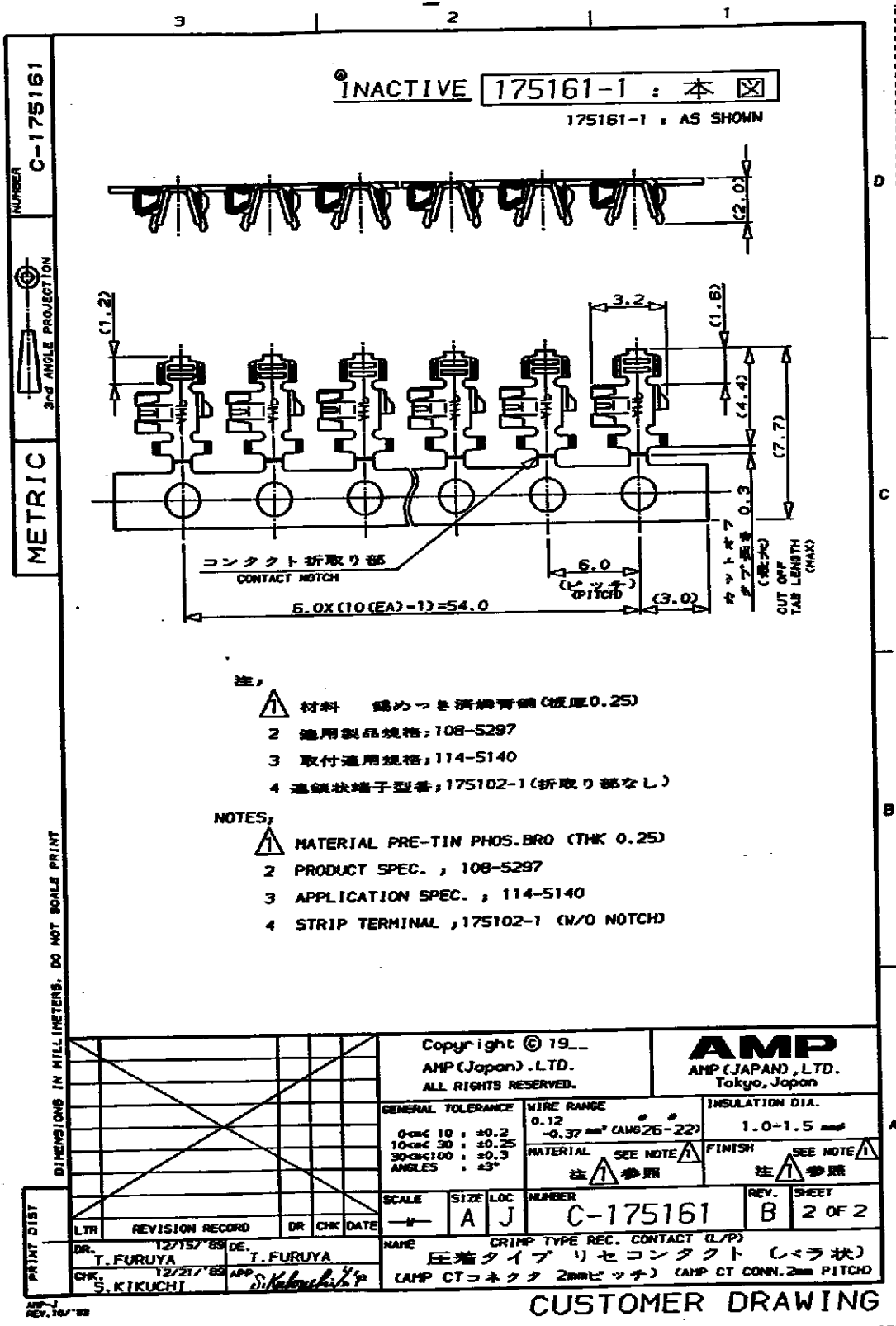
- 注;
- 1 材料 錫めっき済磷青銅 (板厚0.25)
 - 2 通用製品規格, 108-5297
 - 3 取付通用規格, 114-5140
 - 4 通線状端子型番, 1-175102-1 (折取り部なし)

- NOTES,
- 1 MATERIAL PRE-TIN PHOS.BRO (THK 0.25)
 - 2 PRODUCT SPEC. , 108-5297
 - 3 APPLICATION SPEC. , 114-5140
 - 4 STRIP TERMINAL , 1-175102-1 (W/O NOTCH)

PRINT DIST DIMENSIONS IN MILLIMETERS. DO NOT SCALE PRINT

		Copyright © 19__		AMP AMP (JAPAN) LTD. Tokyo, Japan	
		AMP (Japan) LTD. ALL RIGHTS RESERVED.			
		GENERAL TOLERANCE	WIRE RANGE	INSULATION DIA.	
		0-100 : ±0.2	0.12	1.0-1.5 mmf	
		10-30 : ±0.25	-0.37 mm ² (AWG 26-22)	MATERIAL SEE NOTE 1	
		30-100 : ±0.3	注 1 参照	FINISH SEE NOTE 1	
		ANGLES : ±3°			
		SCALE	SIZE LOC	NUMBER	REV. SHEET
		→	A J	C-175161	B 1 OF 2
DR. T. FURUYA		DE. T. FURUYA		NAME CRIMP TYPE REC. CONTACT (L/P)	
CHK. S. KIKUCHI		APP. S. Kikuchi		圧着タイプ リセコンタクト (バラ状)	
				(AMP CTコネクタ 2mmピッチ) (AMP CT CONN. 2mm PITCH)	

CUSTOMER DRAWING



DIMENSIONS IN MILLIMETERS. DO NOT SCALE PRINT

NUMBER C-175161



METRIC

PRINT DIST

Copyright © 19__ AMP (Japan) .LTD. ALL RIGHTS RESERVED.		AMP AMP (JAPAN) ,LTD. Tokyo, Japan	
GENERAL TOLERANCE 0mm 10 : ±0.2 10mm 30 : ±0.25 30mm 100 : ±0.3 ANGLES : ±3°		WIRE RANGE 0.12 -0.37 mm ² (AWG26-22)	INSULATION DIA. 1.0-1.5 mm
SCALE 1:1		MATERIAL SEE NOTE 1 注 参照	FINISH SEE NOTE 1 注 参照
LTR	REVISION RECORD	DR	CHK DATE
DR.	12/15/68 T. FURUYA	DE.	T. FURUYA
CHK.	12/21/68 S. KIKUCHI	APP.	<i>S. Kikuchi</i>
NAME CRIMP TYPE REC. CONTACT (L/P) 圧着タイプリセコンタクト (レラ状) (AMP CTコネクタ 2mmピッチ) (AMP CT CONN. 2mm PITCH)		NUMBER C-175161	REV. SHEET B 2 OF 2

CUSTOMER DRAWING

Mouser Electronics

Authorized Distributor

Click to View Pricing, Inventory, Delivery & Lifecycle Information:

[TE Connectivity:](#)

[1-175161-1](#)