

D

D

C

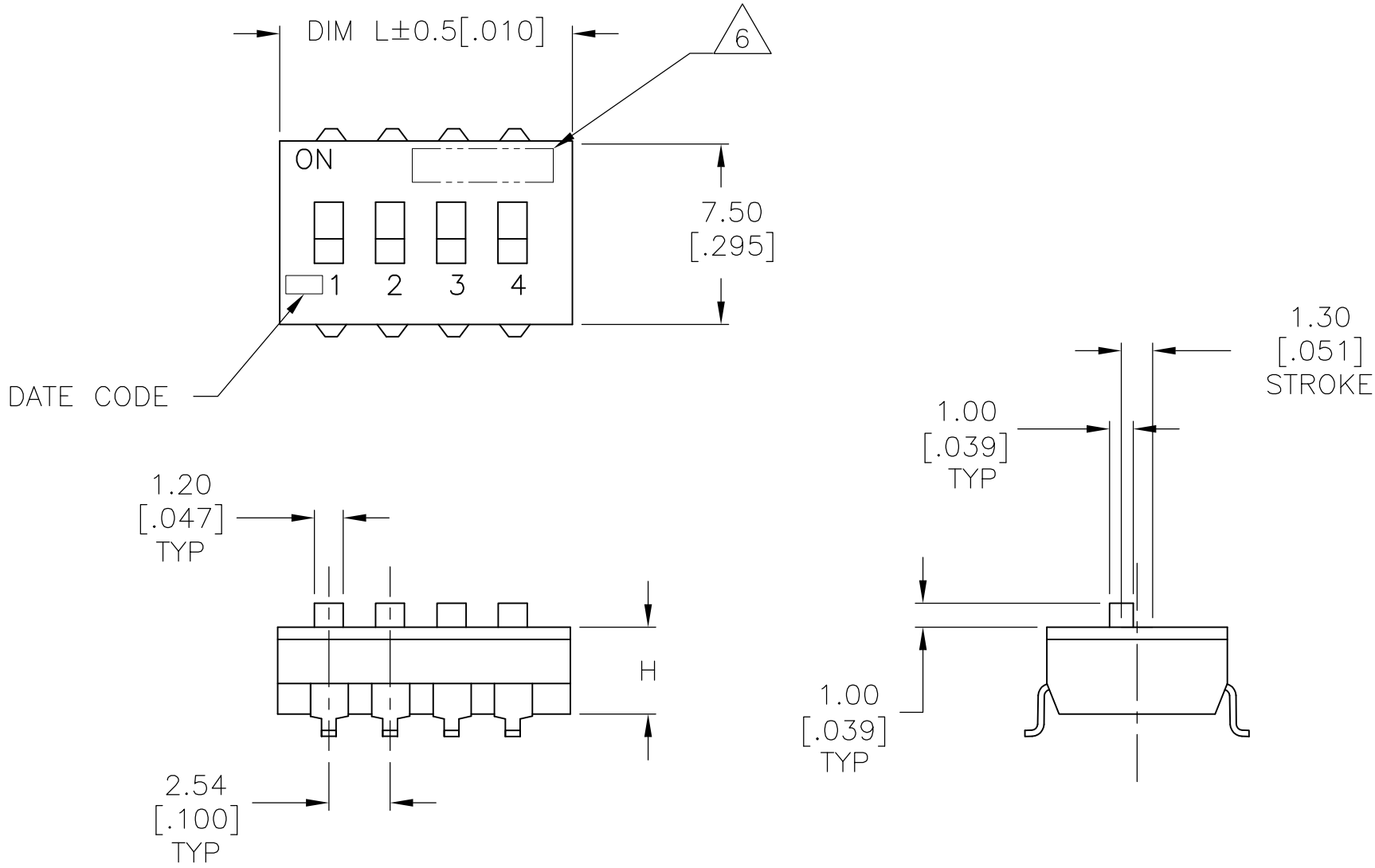
C

B

B

A

A



SPECIFICATIONS:

MATERIAL  
BASE, PPS, UL94V-0, BLACK  
COVER, PPS, UL94V-0, BLACK  
ACTUATOR, PA6T, UL94V-0, WHITE  
FIXED CONTACT/TERMINAL, CU ALLOY-GOLD FLASH OVER NICKEL  
MOVING CONTACT, CU ALLOY, PLATE-GOLD FLASH/NICKEL


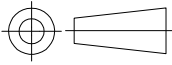
ELECTRICAL  
MAX CONTACT RATING SWITCHING, 100MILLIAMP @ 24 VDC  
MIN CONTACT RATING SWITCHING, .1MICROAMP @ 1 MILLIVOLT  
MAX CONTACT NON-SWITCHING, 1AMP @ 5 VDC  
INITIAL CONTACT RESISTANCE, 50 MILLIOHMS MAX.  
CONTACT RESISTANCE (AFTER ENVIRONMENTAL TEST), 100 MILLIOHMS  
CONTACT RESISTANCE (AFTER GAS TEST), 300 MILLIOHMS  
INSULATION RESISTANCE, 1,000 MEGOHMS MIN. @ 100 VDC  
DIELECTRIC STRENGTH, 500 VAC RMS @ SEA LEVEL  
LIFE EXPECTANCY, 1,000 CYCLES

MECHANICAL  
OPERATING FORCE, LESS THAN 800 GRAMS  
CONTACT PRESSURE, 280,000 PSI

ENVIRONMENTAL  
OPERATING TEMPERATURE, -30 TO +85 DEGREES C  
STORAGE TEMPERATURE, -45 TO +105 DEGREES C  
CLEANING, AQUEOUS OR SOLVENT  
SOLDER HEAT RESISTANCE, PER 109-201,COND B, SWITCH "OFF".  
SOLDERABILITY PER JIS C 0050 & JIS C 0053

- 1
- SWITCHES TO BE RECEIVED IN THE "OFF" POSITION AND PACKAGED IN CLEAR TUBES TO ACCOMMODATE AUTO-INSERTION.
- 2
- TOP SURFACE TO BE CLEARLY MARKED AS SHOWN.
- 3
- SWITCHES TO BE BLACK WITH WHITE ACTUATORS AND MARKINGS.
- 4
- TERMINAL OPTION: OLD T&B P/N ADExxS, SA OR SB  
S= OUTSIDE "L" TERMINALS; SA= INSIDE "L" TERMINALS;  
SB= BUTT TERMINALS.
- 5
- ALL MATERIALS AND FINISHES SHALL COMPLY WITH EU DIRECTIVE 2002/95/EC OF 27JAN2003 (ROHS).
- 6
- OBSOLETE PARTS: OBSOLETE CIS STREAMLINING PER D.RENAUD/D.SINISI.
- 7
- TAPE AND REEL PACKING PER PAGE 3 SPECIFICATIONS.

SEE SHEET 2 FOR PART NUMBER TABLE  
AND MOUNTING OPTIONS

THIS DRAWING IS A CONTROLLED DOCUMENT.		DWN B.S.VISWESWARA	10FEB05	 TE Connectivity	
DIMENSIONS: mm [INCHES]		CHK M.SARVER	-		
		APVD M.SARVER	-	NAME DIP SWITCH, ADE-SMT SERIES	
		PRODUCT SPEC	-		
		APPLICATION SPEC	-		
MATERIAL -		FINISH -	WEIGHT	SIZE A2	CAGE CODE -
			CUSTOMER DRAWING	SCALE 4:1	SHEET 1 OF 3
				DRAWING NO C=1825058	RESTRICTED TO -
				REV S4	

D

D

C

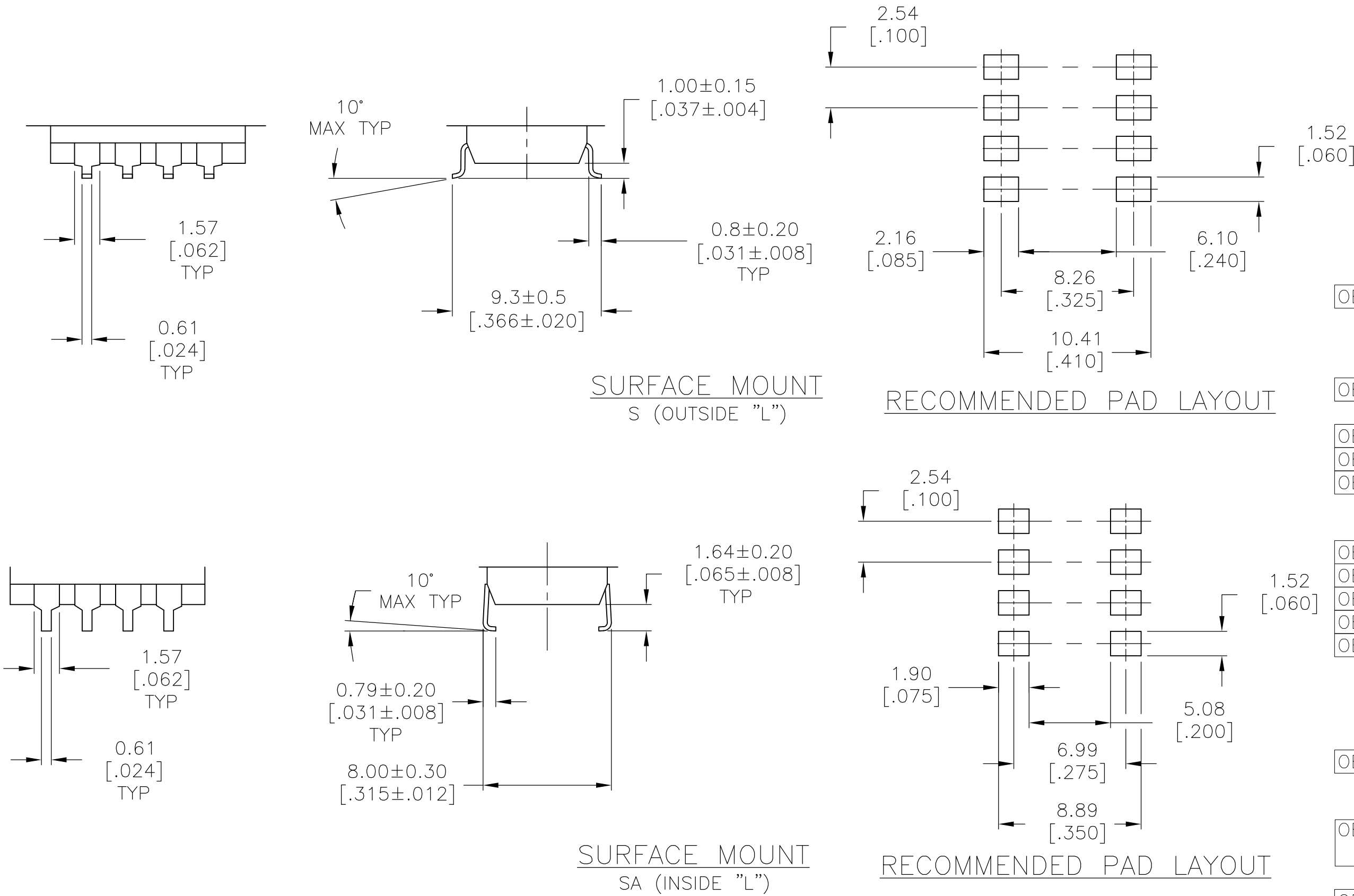
C


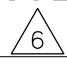
B

B

A

A



OBSOLETE	ADE12STR04	3.61	[.142]	32.51	[1.280]	12	4-1825058-1
	ADE10STR04	3.50	[.138]	27.30	[1.075]	10	4-1825058-0
	ADE09STR04	3.50	[.138]	24.54	[.978]	9	3-1825058-9
	ADE08STR04	3.50	[.138]	22.30	[.878]	8	3-1825058-8
OBSOLETE	ADE07STR04	3.50	[.138]	19.76	[.778]	7	3-1825058-7
	ADE06STR04	3.50	[.138]	17.22	[.678]	6	3-1825058-6
OBSOLETE	ADE05STR04	3.50	[.138]	14.68	[.578]	5	3-1825058-5
OBSOLETE	ADE04STR04	3.50	[.138]	12.14	[.478]	4	3-1825058-4
OBSOLETE	ADE03STR04	3.50	[.138]	9.60	[.378]	3	3-1825058-3
	ADE02STR04	3.50	[.138]	7.00	[.276]	2	3-1825058-2
	ADE04SATR04	3.50	[.138]	12.14	[.478]	4	3-1825058-1
OBSOLETE	ADE12SB04	3.61	[.142]	32.51	[1.280]	12	3-1825058-0
OBSOLETE	ADE12SA04	3.61	[.142]	32.51	[1.280]	12	2-1825058-9
OBSOLETE	ADE12S04	3.61	[.142]	32.51	[1.280]	12	2-1825058-8
OBSOLETE	ADE10SB04	3.50	[.138]	27.30	[1.075]	10	2-1825058-7
OBSOLETE	ADE10SA04	3.50	[.138]	27.30	[1.075]	10	2-1825058-6
	ADE10S04	3.50	[.138]	27.30	[1.075]	10	2-1825058-5
	ADE09SB04	3.50	[.138]	24.54	[.978]	9	2-1825058-4
	ADE09SA04	3.50	[.138]	24.54	[.978]	9	2-1825058-3
	ADE09S04	3.50	[.138]	24.54	[.978]	9	2-1825058-2
OBSOLETE	ADE08SB04	3.50	[.138]	22.30	[.878]	8	2-1825058-1
	ADE08SA04	3.50	[.138]	22.30	[.878]	8	2-1825058-0
	ADE08S04	3.50	[.138]	22.30	[.878]	8	1-1825058-9
	ADE07SB04	3.50	[.138]	19.76	[.778]	7	1-1825058-8
	ADE07SA04	3.50	[.138]	19.76	[.778]	7	1-1825058-7
	ADE07S04	3.50	[.138]	19.76	[.778]	7	1-1825058-6
OBSOLETE	ADE06SB04	3.50	[.138]	17.22	[.678]	6	1-1825058-5
OBSOLETE	ADE06SA04	3.50	[.138]	17.22	[.678]	6	1-1825058-4
	ADE06S04	3.50	[.138]	17.22	[.678]	6	1-1825058-3
OBSOLETE	ADE05SB04	3.50	[.138]	14.68	[.578]	5	1-1825058-2
	ADE05SA04	3.50	[.138]	14.68	[.578]	5	1-1825058-1
	ADE05S04	3.50	[.138]	14.68	[.578]	5	1-1825058-0
	ADE04SB04	3.50	[.138]	12.14	[.478]	4	1825058-9
OBSOLETE	ADE04SA04	3.50	[.138]	12.14	[.478]	4	1825058-8
	ADE04S04	3.50	[.138]	12.14	[.478]	4	1825058-7
OBSOLETE	ADE03SB04	3.50	[.138]	9.60	[.378]	3	1825058-6
OBSOLETE	ADE03SA04	3.50	[.138]	9.60	[.378]	3	1825058-5
	ADE03S04	3.50	[.138]	9.60	[.378]	3	1825058-4
OBSOLETE	ADE02SB04	3.50	[.138]	7.00	[.276]	2	1825058-3
OBSOLETE	ADE02SA04	3.50	[.138]	7.00	[.276]	2	1825058-2
	ADE02S04	3.50	[.138]	7.00	[.276]	2	1825058-1
	T&B P/N	DIM H		DIM L		POSITION	PART NO.

THIS DRAWING IS A CONTROLLED DOCUMENT.

DIMENSIONS:  
mm [INCHES]

0 PLC ± –  
1 PLC ± –  
2 PLC ± 0.30[.012]  
3 PLC ± –  
4 PLC ± –  
ANGLES ± –

TOLERANCES UNLESS OTHERWISE SPECIFIED:

FINISH –

MATERIAL –

–

DWN  
B.S.VISWESWARA  
CHK  
M.SARVER  
APVD  
M.SARVER  
PRODUCT SPEC  
APPLICATION SPEC  
WEIGHT –

10FEB05  
–  
–  
–  
–  
–

10FEB05  
–  
–  
–  
–  
–

TE

TE Connectivity

NAME

DIP SWITCH, ADE–SMT SERIES

SIZE  
A2

CAGE CODE  
–

DRAWING NO  
C=1825058

RESTRICTED TO  
–

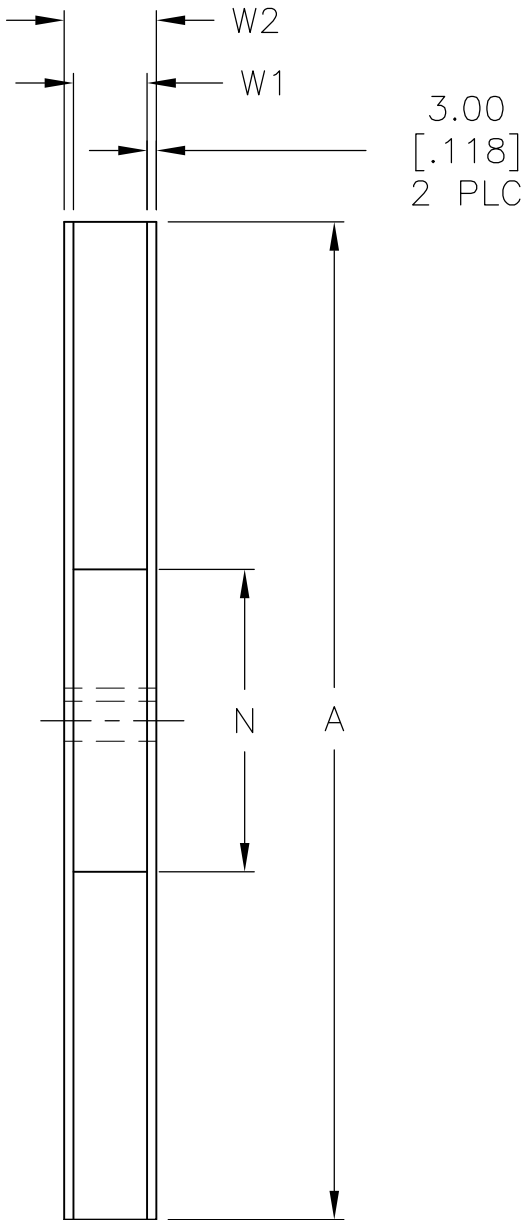
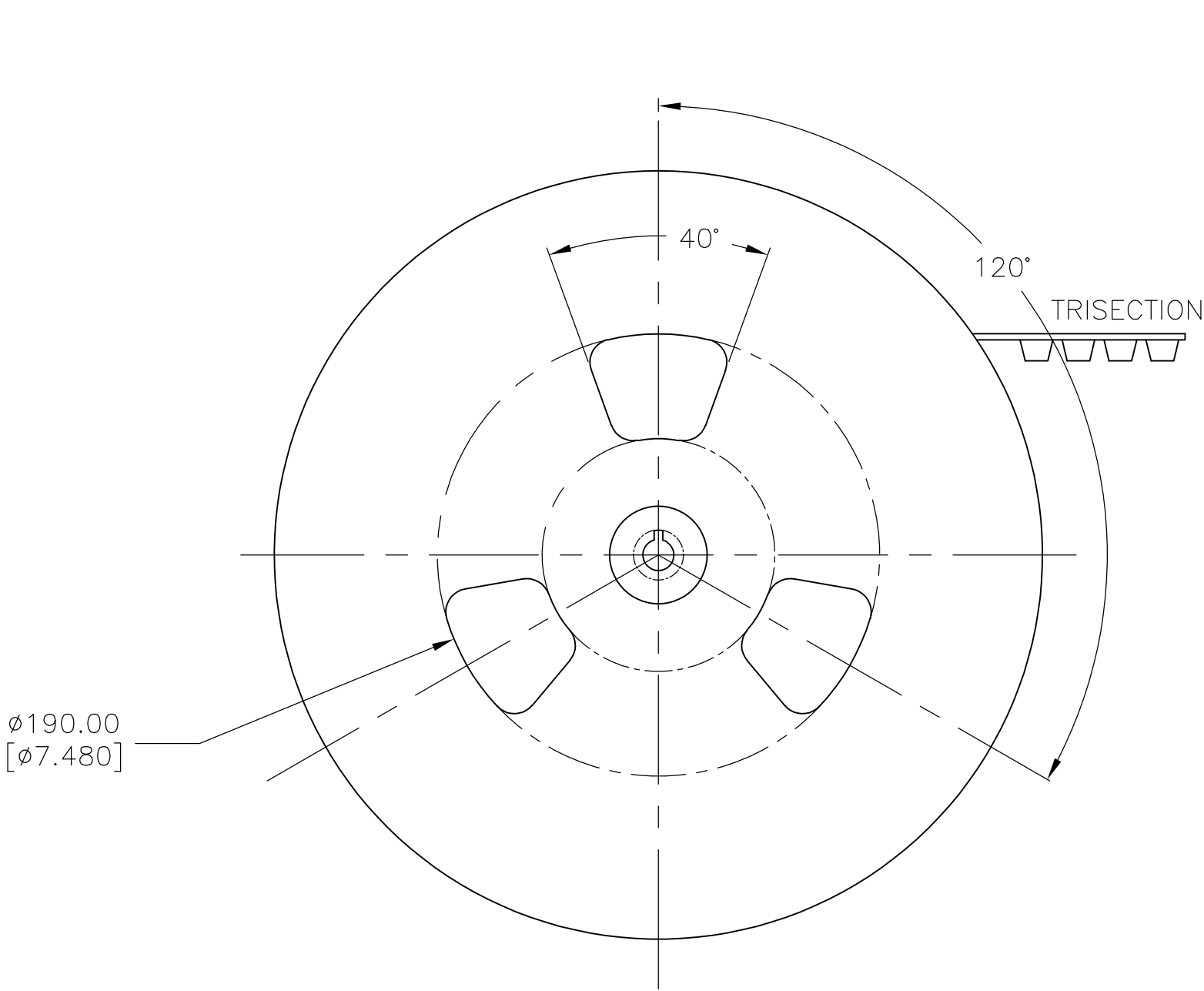
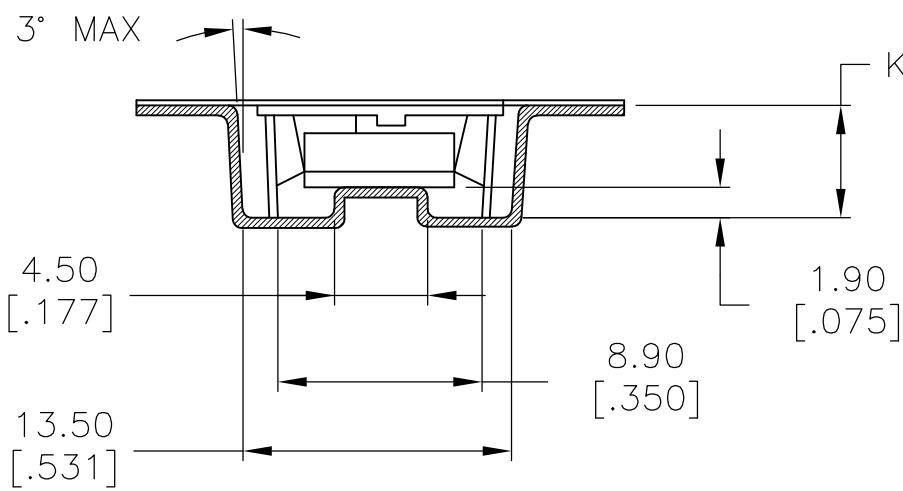
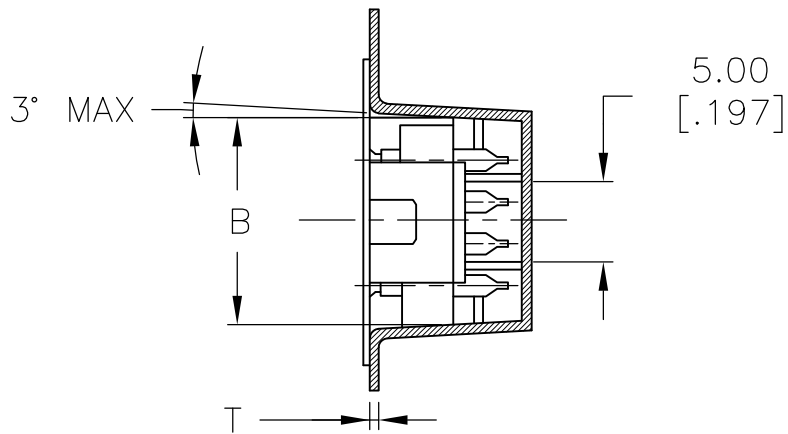
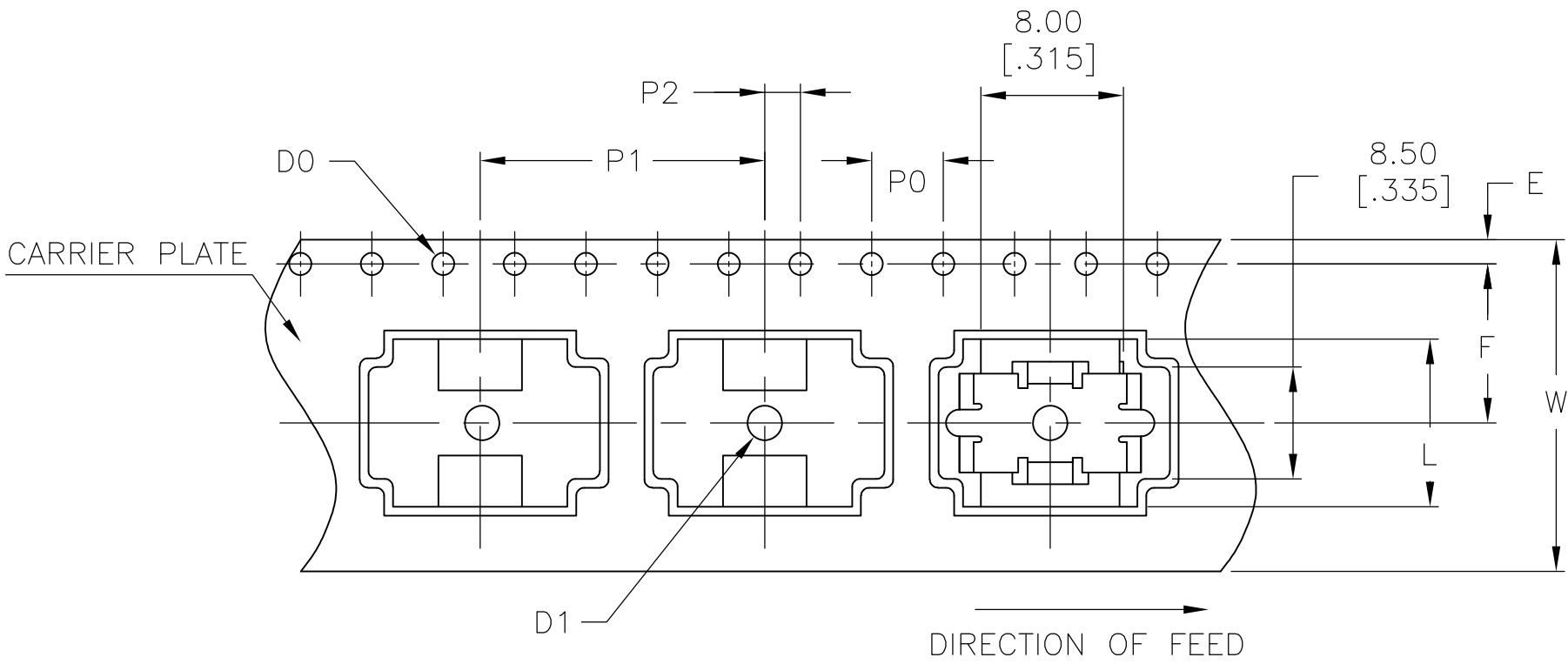
CUSTOMER DRAWING

SCALE  
4:1

SHEET  
2 of 3

REV  
S4

REVISIONS					
P	LTR	DESCRIPTION	DATE	DWN	APVD
	-	SEE SHEET 1	-	-	-





	DESCRIPTION	MATERIAL	DIMENSION	FINISH	REMARKS
1	REEL	SIDE: CARDBOARD CORE: STYLOFOAM	MENTIONED BELOW		
2	EMBOSSED TAPE	-	MENTIONED BELOW	ANTISTATIC	BLACK
3	TOP COVER TAPE	-	MENTIONED BELOW	ANTISTATIC	TRANSPARENT

4P	$\phi 330.00 \pm 2.10$ [12.992±.082]	$\phi 100$ [3.940]	$24.40^{+2.00}_0$ [.960 <sup>+.790</sup> <sub>.000</sub> ]	30.40 [1.997]
NO OF POSITION	A	N (MIN)	W1	W2 (MAX)

4P	$\phi 1.50^{+0.10}_0$ [ø.059 <sup>+.003</sup> <sub>.000</sub> ]	$4.00 \pm 0.10$ [.157±.003]	$16.00 \pm 0.10$ [.629±.003]	$2.00 \pm 0.15$ [.078±.005]	$11.50 \pm 0.10$ [.453±.003]	$7.40 \pm 0.10$ [.291±.003]
NO OF POSITION	D1	P0	P1	P2	F	K

4P	$24.00 \pm 0.30$ [.944±.011]	$12.90 \pm 0.10$ [.507±.003]	$1.75 \pm 0.10$ [.068±.003]	$0.50 \pm 0.05$ [.020±.001]	$12.14 \pm 0.50$ [.477±.020]	$\phi 1.50^{+0.10}_0$ [ø.059 <sup>+.003</sup> <sub>.000</sub> ]
NO OF POSITION	W	B	E	T	L	DO

THIS DRAWING IS A CONTROLLED DOCUMENT.		DWN B.S.VISWESWARA CHK M.SARVER APVD M.SARVER PRODUCT SPEC APPLICATION SPEC — WEIGHT		10FEB05 —		 TE Connectivity					
DIMENSIONS: mm [INCHES]		TOLERANCES UNLESS OTHERWISE SPECIFIED: 0 PLC ± — 1 PLC ± — 2 PLC ± 0.30[.012] 3 PLC ± — 4 PLC ± — ANGLES ± — FINISH		NAME  DIP SWITCH, ADE-SMT SERIES							
		MATERIAL —		SIZE A2		CAGE CODE —		DRAWING NO C=1825058		RESTRICTED TO —	
CUSTOMER DRAWING				SCALE 4:1		SHEET 3 of 3		REV S4			

# Mouser Electronics

Authorized Distributor

Click to View Pricing, Inventory, Delivery & Lifecycle Information:

[TE Connectivity:](#)

[ADE12SB04](#)