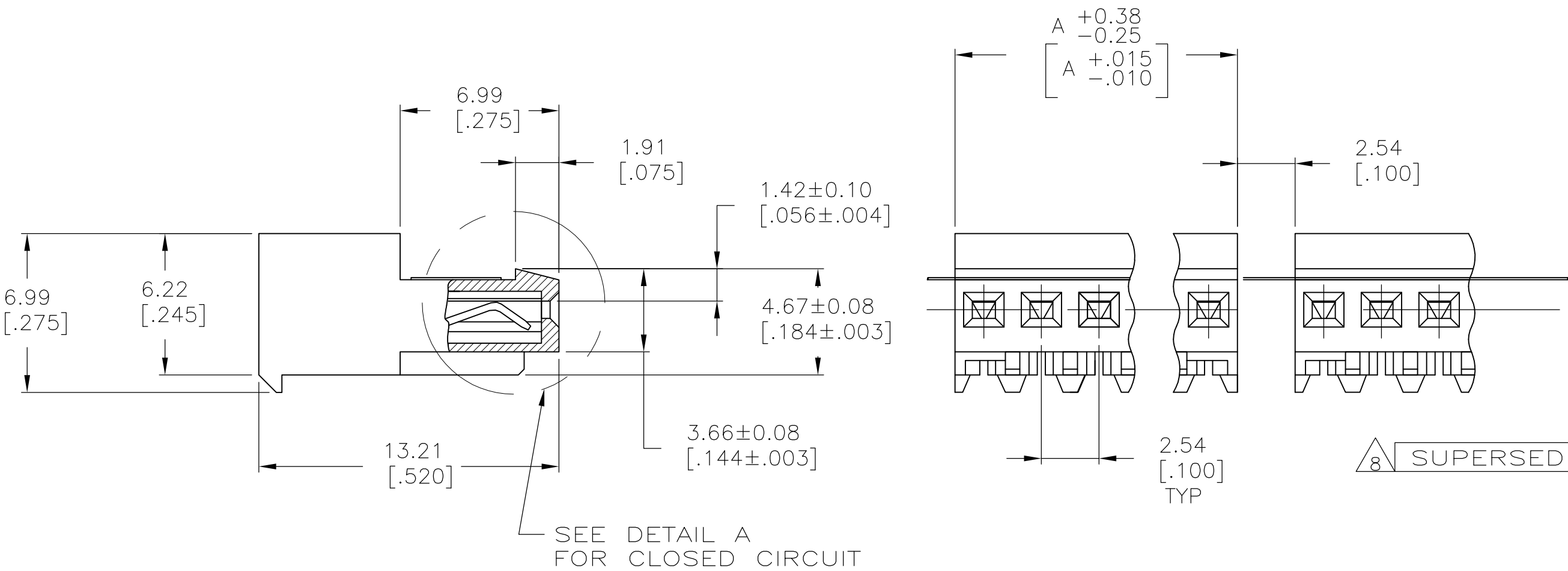
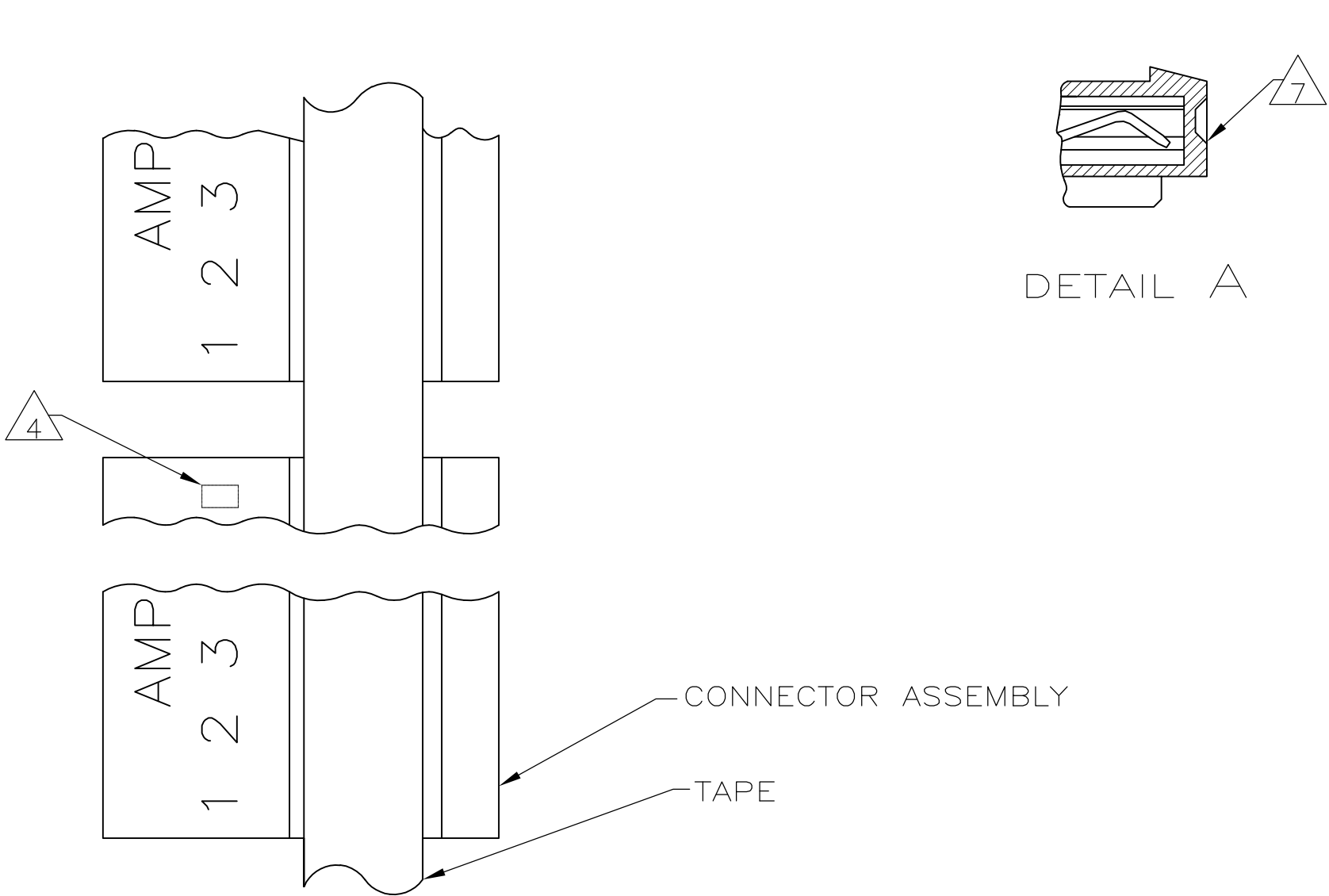



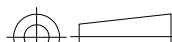


LOC	DIST	REVISIONS					
		P	LTR	DESCRIPTION	DATE	DWN	APVD
CM	00		E	REVISED PER ECR-17-018812	12FEB2018	BDA	SG



- 1 MATERIAL: CONNECTOR – NYLON UL94V-2 (ORANGE).  
CONTACTS – 0.30[.012] THICK COPPER ALLOY  
MATTE WHISKER MITIGATED TIN  
0.00203[.000080] MIN THICKNESS  
OVER NICKEL UNDERPLATE OR BRIGHT  
TIN-LEAD 93/7 0.00203[.000080] MIN  
THICKNESS. SEE FINISH COLUMN FOR  
PLATING TYPE.
2. CONTACTS ACCEPT 28 AWG WIRE WITH 1.52[.060] MAX  
INSULATION DIAMETER.
3. CONTACTS MUST ACCEPT 0.64±0.03[.025±.001]  
POST AND REMAIN LOCKED IN POSITION.
- 4 IDENTIFICATION NUMBER FOR LAST CIRCUIT MAY  
NOT APPEAR ON ALL ASSEMBLIES.
5. DIMENSIONS IN BRACKETS ARE IN INCHES.
6. HOUSING FEATURES ARE: CLOSED END WITH LOCKING RAMP.
- 7 DETAIL A SHOWS CIRCUIT NO. 5 & 7 MOLDED CLOSED.
- 8 OBSOLETE PARTS

TIN			
	22.86 [.900]	9	3-644482-9
TIN-LEAD			
	22.86 [.900]	9	-644482-9-
FINISH	DIM A	NO. OF CIRCUITS	PART NO.

8 SUPERSEDED

THIS DRAWING IS A CONTROLLED DOCUMENT.			DWN B. LEWIS 22APR91		 Tyco Electronics Corporation Harrisburg, Pa 17105-3608								
			CHK R. SWING 22APR91										
DIMENSIONS: mm [INCHES]		TOLERANCES UNLESS OTHERWISE SPECIFIED:		APVD M. MILLER 22APR91		NAME							
		0 PLC ± -		PRODUCT SPEC		MTA 100 CONNECTOR ASSEMBLY, 28 AWG, NO.5&7 CIRCUIT CLOSED, TAPE MOUNTED,SPECIAL							
		1 PLC ± -		108-1050									
		2 PLC ± -		APPLICATION SPEC									
		3 PLC ± 0.13 [.005]		114-1019									
4 PLC ± -		ANGLES ± -		WEIGHT		SIZE	CAGE CODE	DRAWING NO	RESTRICTED TO				
MATERIAL		FINISH		A2		00779		C-644482					
				CUSTOMER DRAWING				SCALE	5:1	SHEET	1 of 1	REV	E

# Mouser Electronics

Authorized Distributor

Click to View Pricing, Inventory, Delivery & Lifecycle Information:

[TE Connectivity:](#)

[3-644482-9](#)