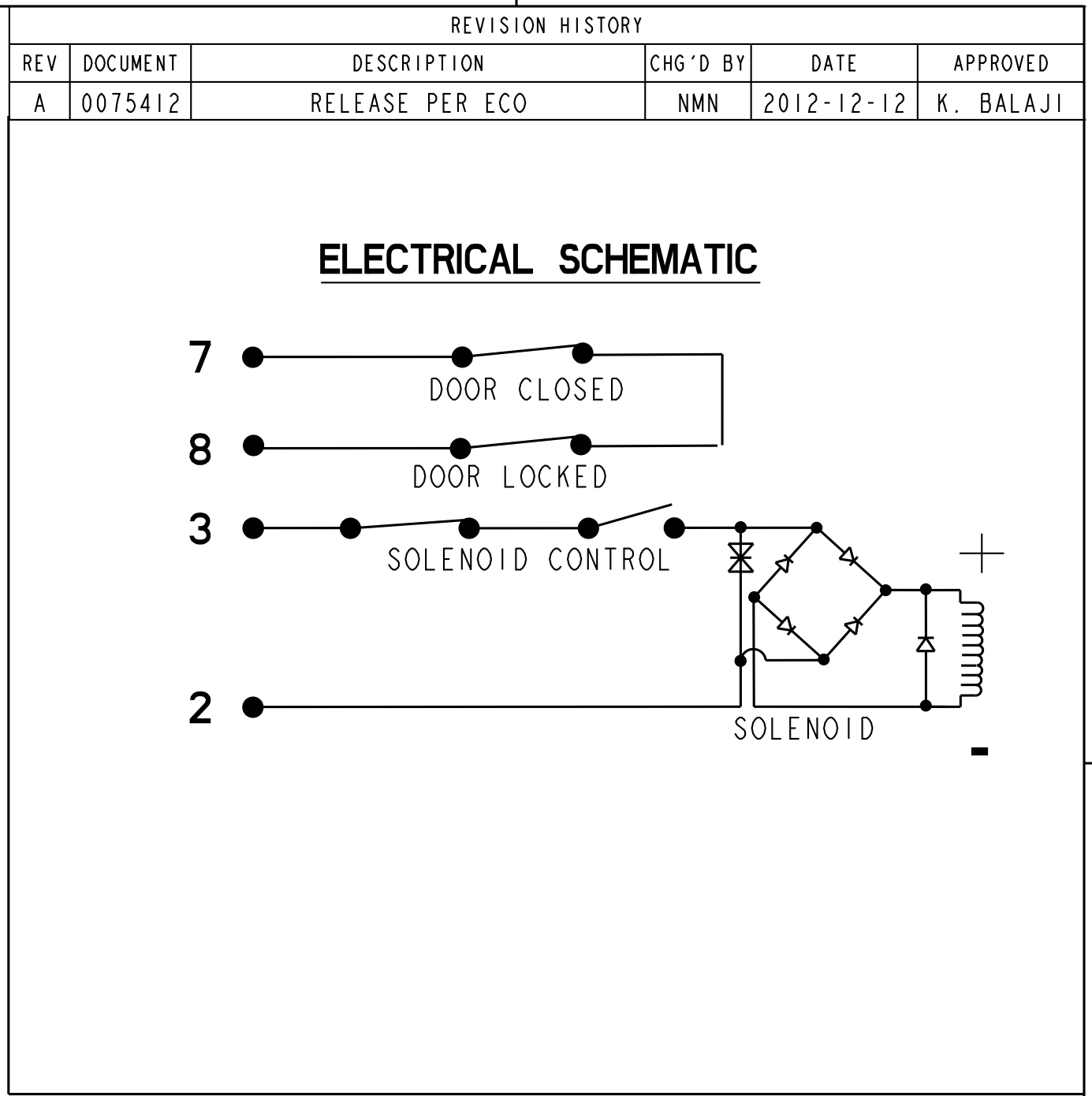
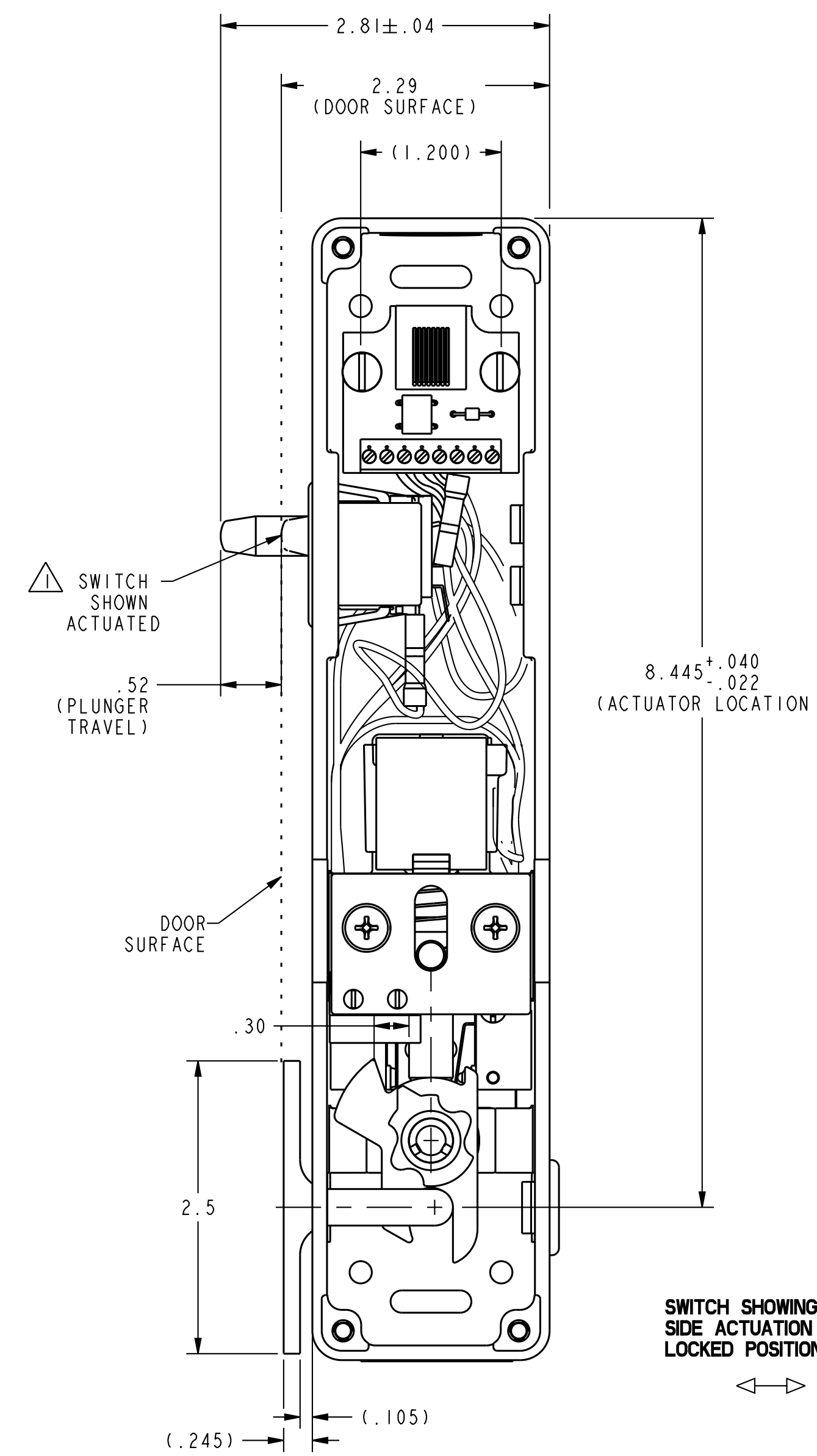
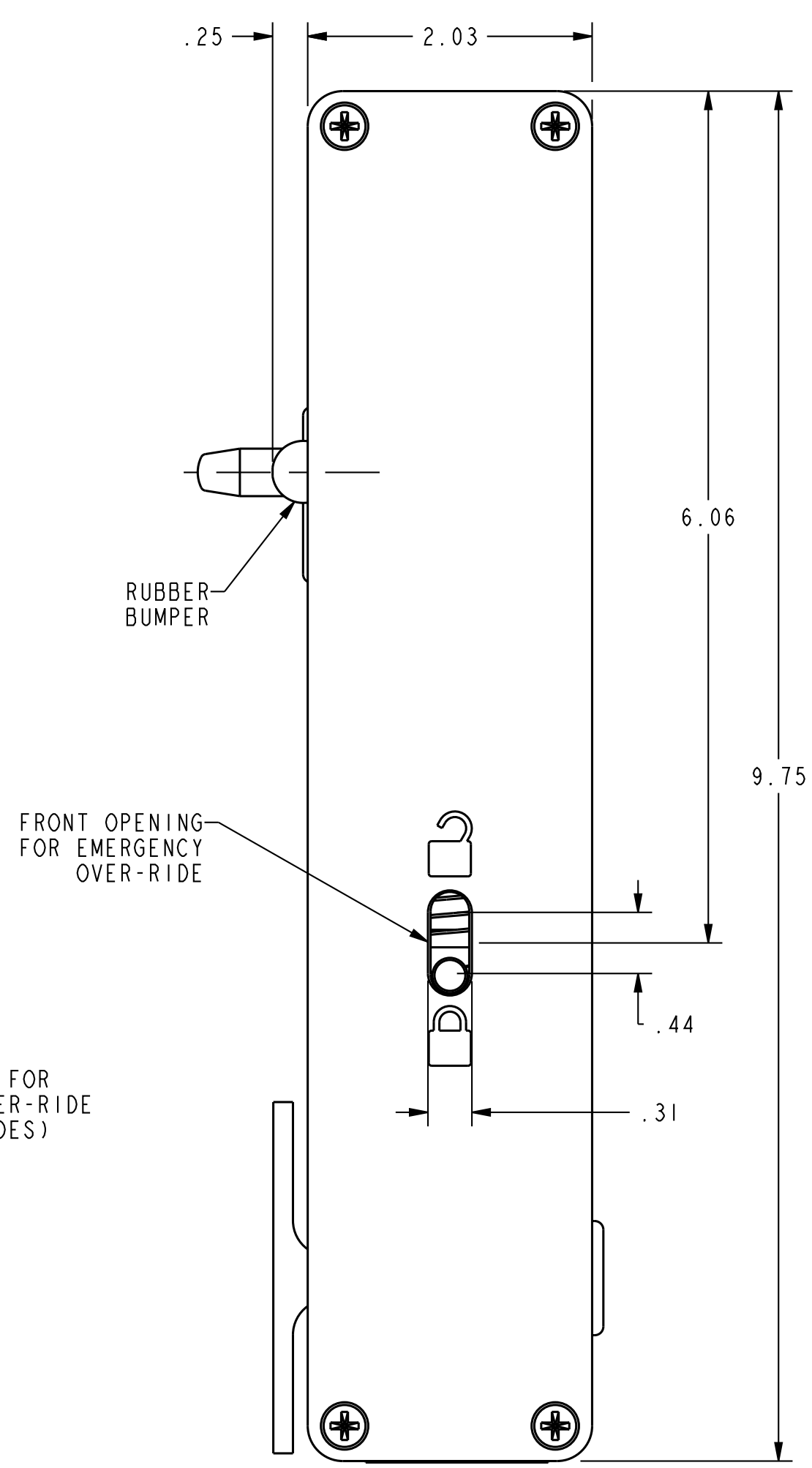
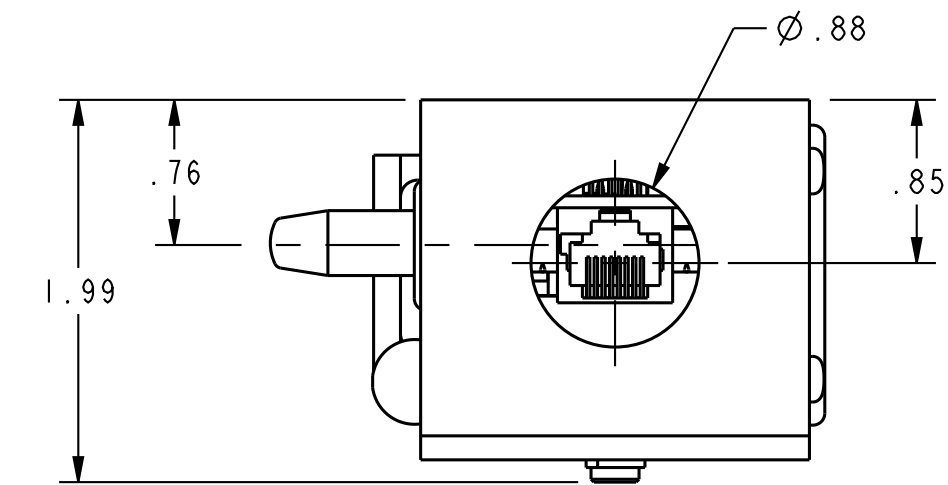
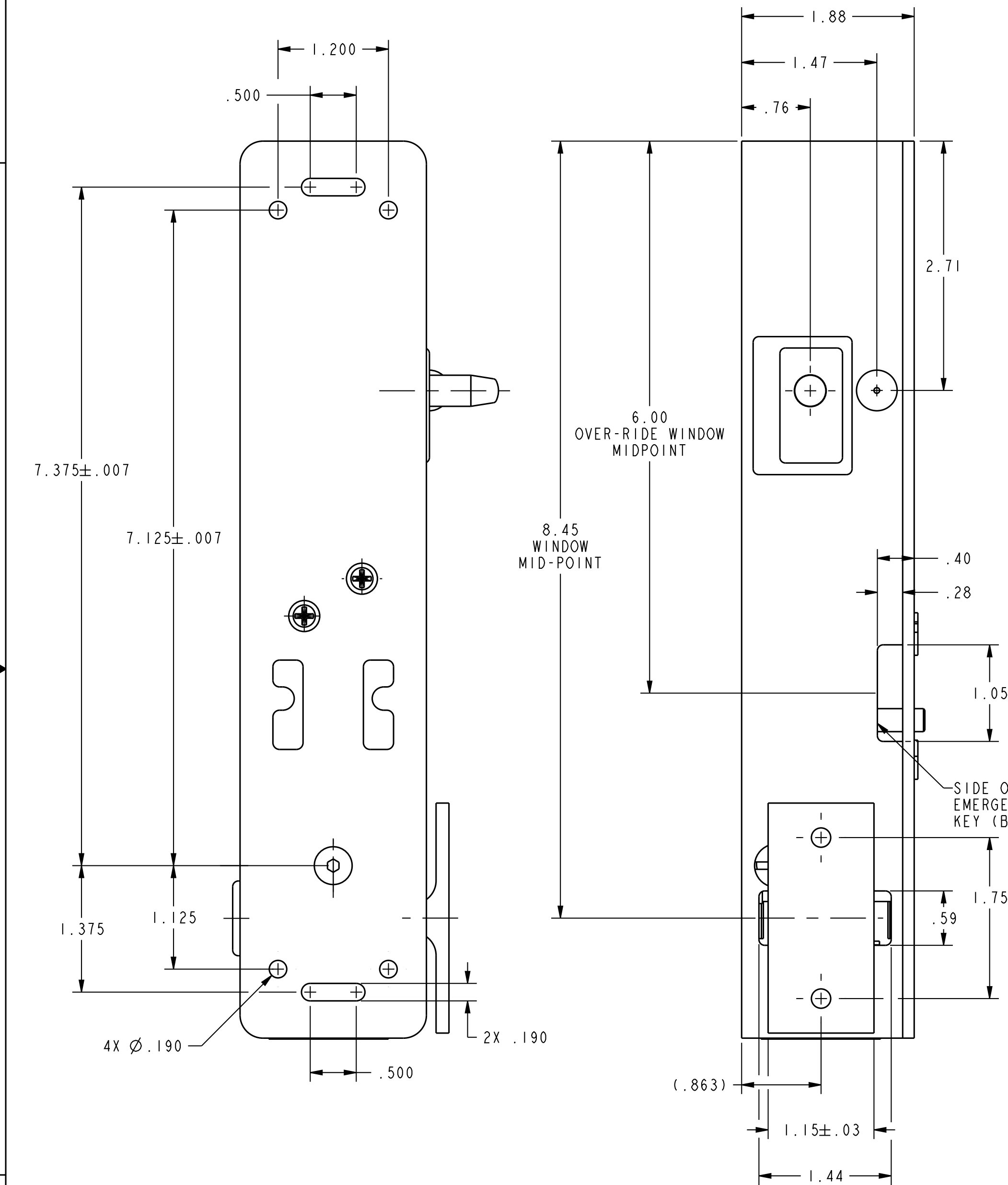
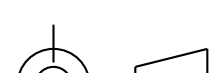


PART NUMBER
CD1LBS2W



APPROVALS			
APPROVALS COVERAGE	UL104/ASME17.1/CSA B44.1 FOR COMMERCIAL USE		
ELECTRICAL RATINGS			
VOLTAGE	24 VAC	24 VDC	
CURRENT	0.35A, 60Hz	0.2A	
ENVIRONMENTAL			
OPERATING TEMPERATURE	+4° TO +38°C (+40° TO +100°F)		
STORAGE TEMPERATURE	-40° TO 60° C (-40° TO +140°F)		
MATERIAL OF CONSTRUCTION			
ACTUATOR KEY	INVESTMENT CAST STAINLESS STEEL WITH POWDER COAT FINISH WHITE COLOR		
CAM	INVESTMENT CAST STAINLESS STEEL		
COVER	DIE CAST ZINC WITH POWDER COAT FINISH WHITE COLOR		
HOUSING	DIE CAST ZINC WITH POWDER COAT FINISH WHITE COLOR		

UNLESS OTHERWISE SPECIFIED DIMENSIONS ARE IN INCHES DECIMAL TOL. NO PLACE --- .400 1 PLACE --- .030 2 PLACE --- .010 3 PLACE --- .005 ANGULAR TOL. - $\pm 2^\circ$ CHAMFER - $\pm .5^\circ$		THIRD ANGLE PROJECTION 		<h1>Honeywell</h1> <h2>SWITCH, ASSEMBLY</h2>			
		TITLE					
MATERIAL -		SIZE D	GAGE CODE -	DWG NO CDILBS2W		TYPE I	REV A
FINISH -		SCALE 1" = 1"		REF WT: -		SHEET 1 of 1	
APPLICABLE DOCUMENTS: ASME Y14.100-2004 ASME Y14.5-2009		RELEASE DATE 2012-12-05		HONEYWELL CONFIDENTIAL THIS DOCUMENT CONTAINS PROPRIETARY INFORMATION AND SUCH INFORMATION MAY NOT BE DISCLOSED TO OTHERS FOR ANY PURPOSE, NOR USED FOR MANUFACTURING PURPOSES WITHOUT WRITTEN PERMISSION FROM HONEYWELL			
		DRW: K. NAVEEN 2012-12-05					
		RDE: K. BALAJI 2012-12-05					
		QA: - -					
COMPUTER GENERATED DRAWING: PRO/ENGINEER		CHK: K. BALAJI 2012-12-05					

Mouser Electronics

Authorized Distributor

Click to View Pricing, Inventory, Delivery & Lifecycle Information:

[Honeywell:](#)

[CDILBS2W](#)