

RED IS ~~REDACTED~~ ORIGINAL

DISK # DWG SIZE
K 1 C

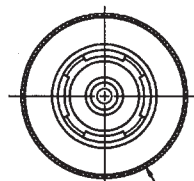
DATA CONTAINED IN THIS DOCUMENT IS PROPRIETARY TO TROMPETER ELECTRONICS INC. AND SHALL NOT BE DISCLOSED, COPIED OR USED FOR PROCUREMENT OR MANUFACTURE WITHOUT EXPRESS WRITTEN PERMISSION.

REVISIONS			310-0067	SH 1
REV	EO	DESCRIPTION	DWN	APPROVED
F	10054	PICTORIALLY CHANGED 1.00 FLARED SEALING SLEEVE TO STRAIGHT (1.25) LONG SEALING SLEEVE; GENERAL UPDATE	DKC	<i>OK</i> 12/13/92

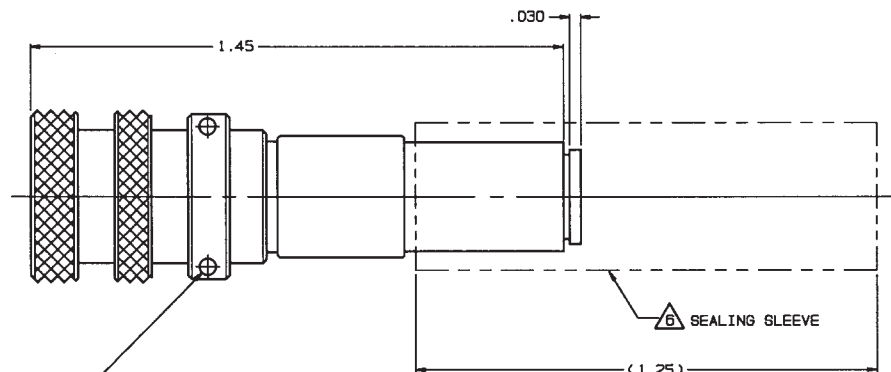
TABLE 1		
DASH NO	MODEL NO	CENTER CONTACT/INTMD CONTACT TYPE
-1	PL3455AC P	SOCKET/PIN
-2	PL3455AC S	PIN/SOCKET

TABLE 2		
CABLE GROUP NO	CABLES ACCOMMODATED	ASSEMBLY PER
-201	M17/176-00002	
-202	TWC-78-1, TROMPETER	
-203	TWC-124-1A, TROMPETER	
-204	10602, RAYCHEM	
-205	TWAC-78-1F2, TROMPETER	
-206	782600130, RAYCHEM	
-208	202-3927, MICRODOT	
-209	202-3942, MICRODOT	
-212	2524E0114, RAYCHEM	
-217	GC875TM24H, GRUMMAN	
-218	EPD221888, RAYCHEM	
-219	2526D1114, RAYCHEM	
-220	GC875RR1, GRUMMAN	
-221	10614, RAYCHEM	
-222	10613, RAYCHEM	
-223	HMS2-1149, HUGHES	
-303	7528A5314, RAYCHEM	TAI-190

INCH	MM
.002	0.05
.005	0.13
.030	0.76
.045	1.14
.255	6.48
.450	11.43
1.25	31.75
1.45	36.83

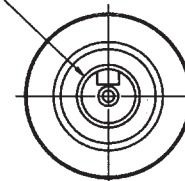


.450 DIA MAX OVER KNURL



.045 ± .002 DIA SAFETY WIRE HOLES 2 PLACES

CABLE ENTRY



SEALING SLEEVE & CRIMP BUSHING SUPPLIED LOOSE WITH EACH CONNECTOR; EXCEPT SEALING SLEEVE NOT USED ON -205, -208 & -223

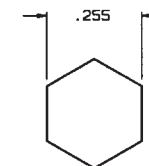
5. EXAMPLE OF COMPLETE MODEL NO:

PL3455AC P -201
BASIC MODEL NO CABLE GROUP NO (SEE TABLE 2)
CENTER & INTERMEDIATE CONTACT TYPE (SEE TABLE 1)

4. EXAMPLE OF COMPLETE PART NO:

310-0067 - 1 - 201
BASIC PART NO DASH NO (SEE TABLE 1) CABLE GROUP NO (SEE TABLE 2)

-1 -202 SHOWN



RECOMMENDED
HEX CRIMP

3. CONCENTRIC TWINAX 4 PIECE ASSY. FULL CRIMP
CABLE PLUG, SOCKET CENTER
CONTACT AND PIN INTERMEDIATE CONTACT OR PIN CENTER
CONTACT AND SOCKET INTERMEDIATE CONTACT

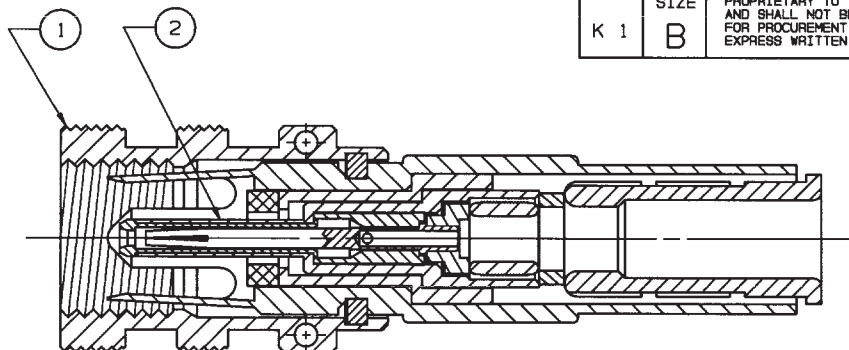
2. TFS-1U (500 HRS SALT SPRAY; NICKEL)

1. ALL DIM ARE IN INCHES

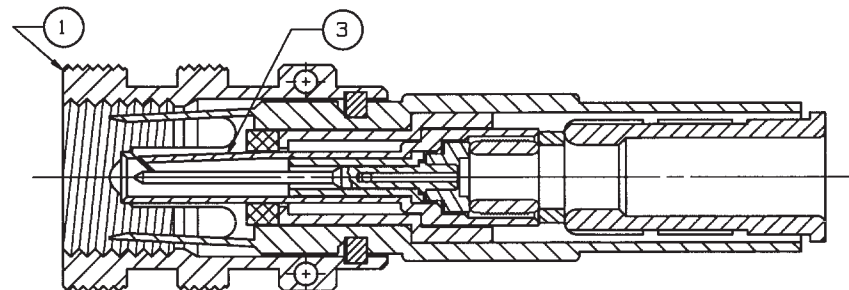
QTY	DESCRIPTION	PART NUMBER	ITEM
TOL UNLESS SPECIFIED .XX ± .03 .XXX ± .005 .XXXX ± .0005 ANGLES:	TROMPETER RF connectivity	PL3455ACP/S	
DWN DKC 12-3-92	MATERIAL	CODE IDENT	DRAWING NO.
CHK <i>OK</i>		14949	310-0067
ENGR	SCALE 4/1	DATE 10-7-87	SHEET 1 OF 2
APPR <i>OK</i>	NEXT ASSY		

RED INDICATES ORIGINAL

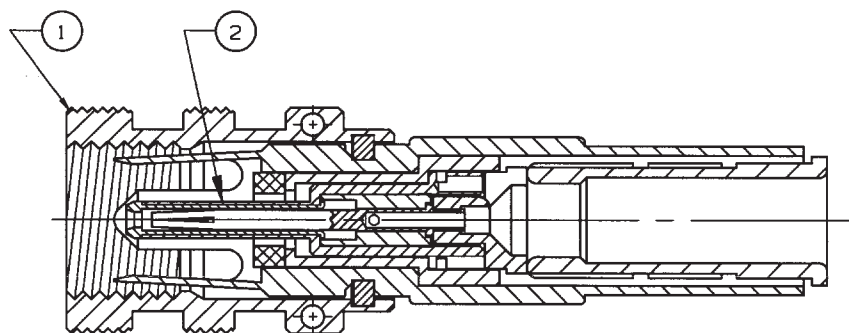
DISK # K 1	DWG SIZE B	DATA CONTAINED IN THIS DOCUMENT IS PROPRIETARY TO TROMPETER ELECTRONICS INC. AND SHALL NOT BE DISCLOSED, COPIED OR USED FOR PROCUREMENT OR MANUFACTURE WITHOUT EXPRESS WRITTEN PERMISSION.	REVISIONS			310-0067		SH 2
			REV	EO	DESCRIPTION	DWN	APPROVED	DATE



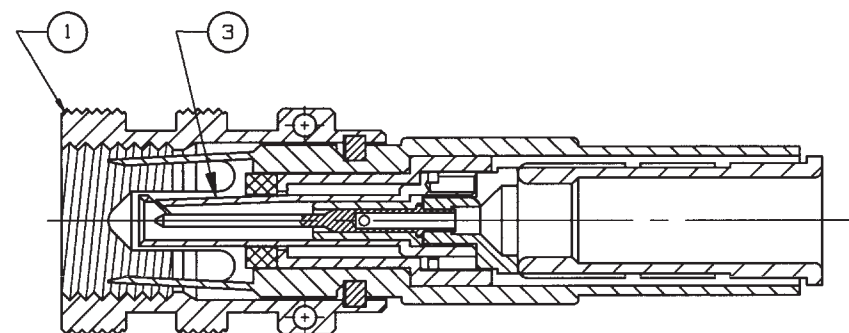
-1-303 SHOWN



-2-303 SHOWN




-1-221 SHOWN



-2-221 SHOWN

1 DASH NO SAME AS CABLE GROUP NO

1	1	SP450AC - 1		8-2496-	1		3
	1	PS450AC - 1		8-2495-	1		2
	1	BODY ASSY. PL3455AC - 1		8-2554-	1		1
-2	-1	DESCRIPTION			PART NUMBER		ITEM
TOL UNLESS SPECIFIED			 TROMPETER RF connectivity <small>a circh connectivity solutions brand</small>	PL3455ACP/S			
.XX ± .XXX ± .XXXX ± ANGLES ±							
DWN	DKC	12-3-92		MATERIAL	CODE IDENT	DRAWING NO.	REV
	CHK	<u>DKG</u>	<u>12/4/92</u>	<u>14949</u>	<u>310-0067</u>	<u>F</u>	
	ENGR						
ASSY	APPR	<u>KY</u>	<u>12/29/92</u>	SCALE 4/1	DATE 10-7-87	SHEET 2	

NEXT ASSY

Mouser Electronics

Authorized Distributor

Click to View Pricing, Inventory, Delivery & Lifecycle Information:

[Cinch Connectivity Solutions:](#)

[PL3455ACP-303](#)