

LOC	DIST	REVISIONS					
		P	LTR	DESCRIPTION	DATE	DWN	APVD
HV	00		A	ECO-08-000738	11JAN2008	DS	AT
			AI	ECO-11-001556	24JAN2011	AD	AD

D

C

B

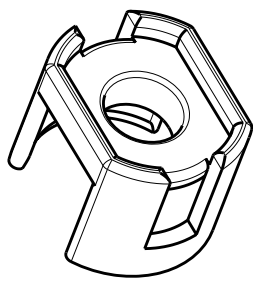
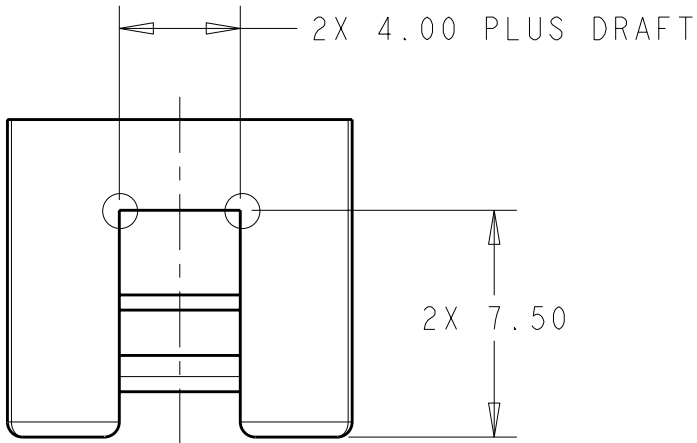
A

D

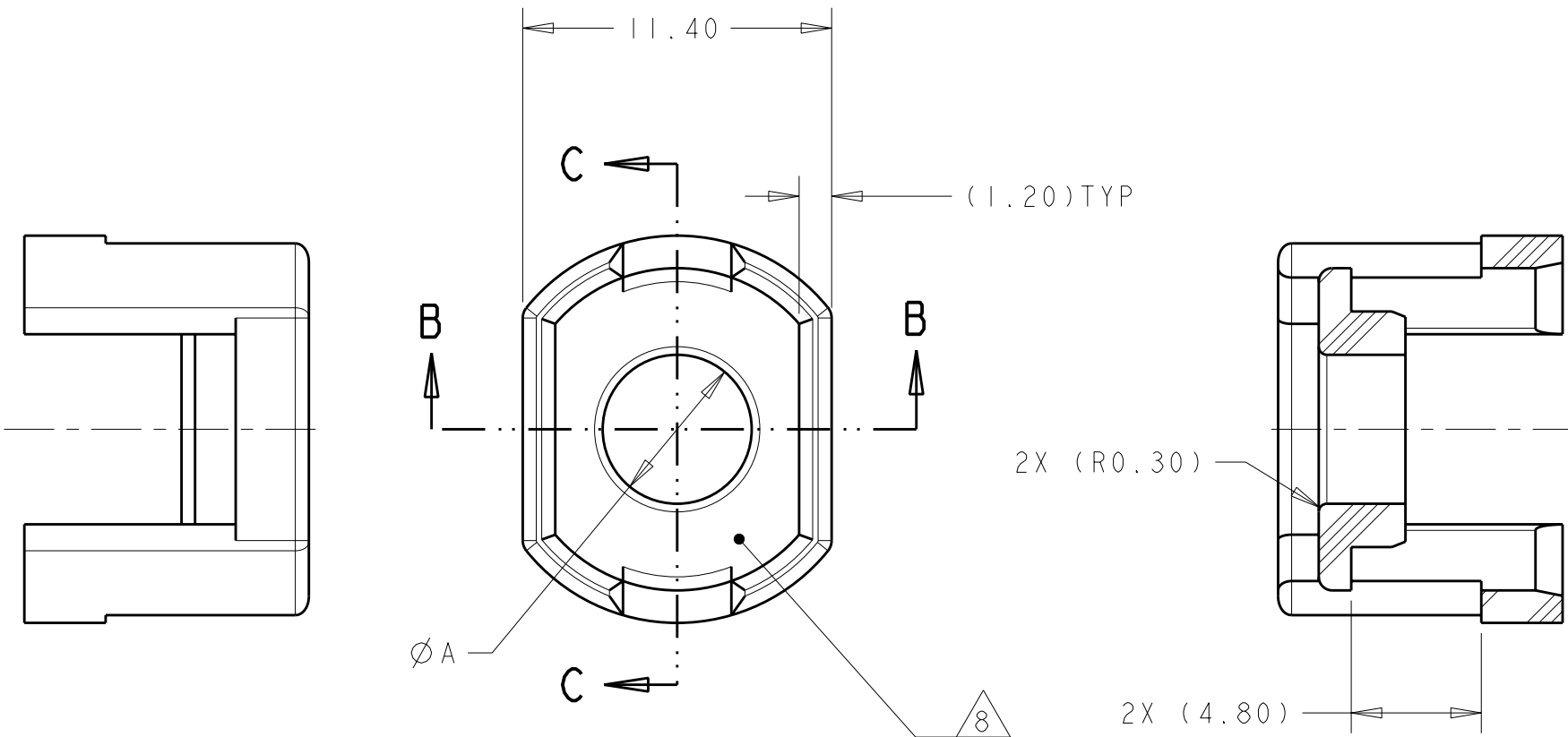
C

B

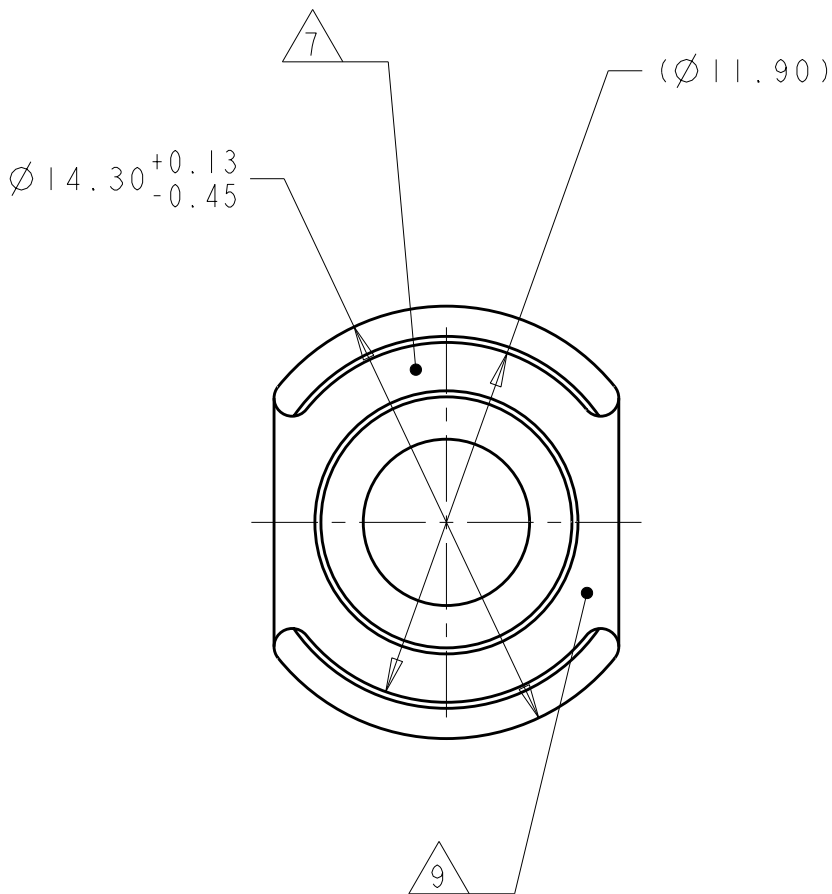
A



SCALE 2:1

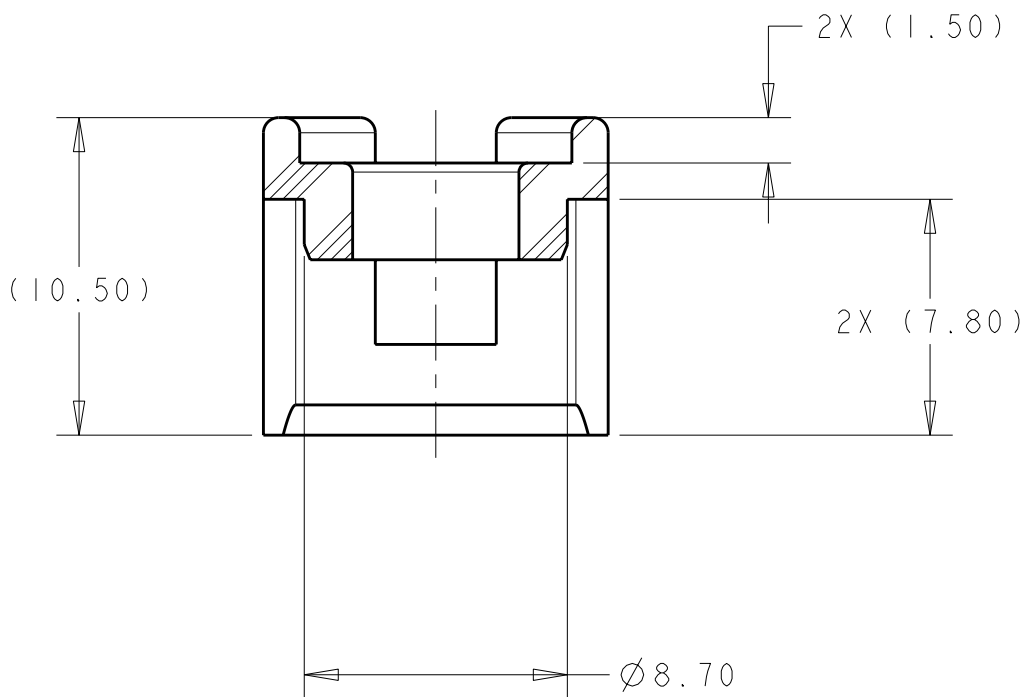


SECTION C-C



1. MATERIAL:  
TYPE: PA6/6 35%GF  
COLOR: ORANGE
2. DRAFT ALLOWABLE WITHIN TOLERANCE
3. FEATURES DENOTED BY REFERENCE DIMENSIONS  
MUST BE INSPECTED FOR PRESENCE
4. PART MUST BE FREE OF EXCESSIVE FLASH, MIS-MATCH,  
SINK MARKS, OR OTHER VISUAL IMPERFECTIONS THAT  
MAY AFFECT PRODUCT FIT OR FUNCTION
5. EJECTOR PIN MARK DEPTH 0.25 MAX
6. (R0.30 MAX) ALLOWABLE ON ALL CORNERS SHOWN AS  
SHARP UNLESS OTHERWISE NOTED

- 7 APPLY TYCO ELECTRONICS PART NUMBER  
RAISED (0.05) ON (0.05) RECESSED AREA
- 8 RECYCLE CODE ">PA66-GF35<" TO BE SHOWN IN THIS AREA  
RAISED (0.20) ON (0.20) RECESSED AREA
- 9 MOLD CAVITY ID TO BE SHOWN IN THIS AREA  
RAISED (0.20) ON (0.20) RECESSED AREA
- 10 REMOVED
11. ALL GATES, PARTING LINES, AND EJECTOR LOCATIONS  
MUST BE APPROVED BY TYCO ELECTRONICS ENGINEERING  
PRIOR TO TOOL FABRICATION
- 12 PRELIMINARY PART—NOT RELEASED FOR PRODUCTION



SECTION B-B

12	7.30	CABLE SEAL RETAINER, HVA, SIZE D	1587525-4
	6.60	CABLE SEAL RETAINER, HVA, SIZE C	1587525-3
	5.80	CABLE SEAL RETAINER, HVA, SIZE B	1587525-2
	5.50	CABLE SEAL RETAINER, HVA, SIZE A	1587525-1
	Ø A	DESCRIPTION	PART NO

THIS DRAWING IS A CONTROLLED DOCUMENT FOR TYCO ELECTRONICS CORPORATION IT IS SUBJECT TO CHANGE AND THE CONTROLLING ENGINEERING ORGANIZATION SHOULD BE CONTACTED FOR THE LATEST REVISION.				DWN D. SIMPSON 06SEP2007	Tyco Electronics Harrisburg, PA 17105-3608			
DIMENSIONS: mm				CHK A TYLER 06SEP2007	NAME CABLE SEAL RETAINER, HVA -			
				APVD -				
				PRODUCT SPEC -				
MATERIAL NOTED				APPLICATION SPEC -	SIZE A200779C-1587525			
				WEIGHT -				
				CUSTOMER DRAWING	SCALE 4:1	SHEET 1	OF 1	REV A1

# Mouser Electronics

Authorized Distributor

Click to View Pricing, Inventory, Delivery & Lifecycle Information:

[TE Connectivity:](#)

[1587525-2](#)