

THIS DRAWING IS UNPUBLISHED.

RELEASED FOR PUBLICATION

© COPYRIGHT — TE Connectivity Ltd.

ALL RIGHTS RESERVED.

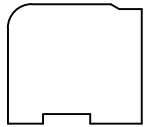
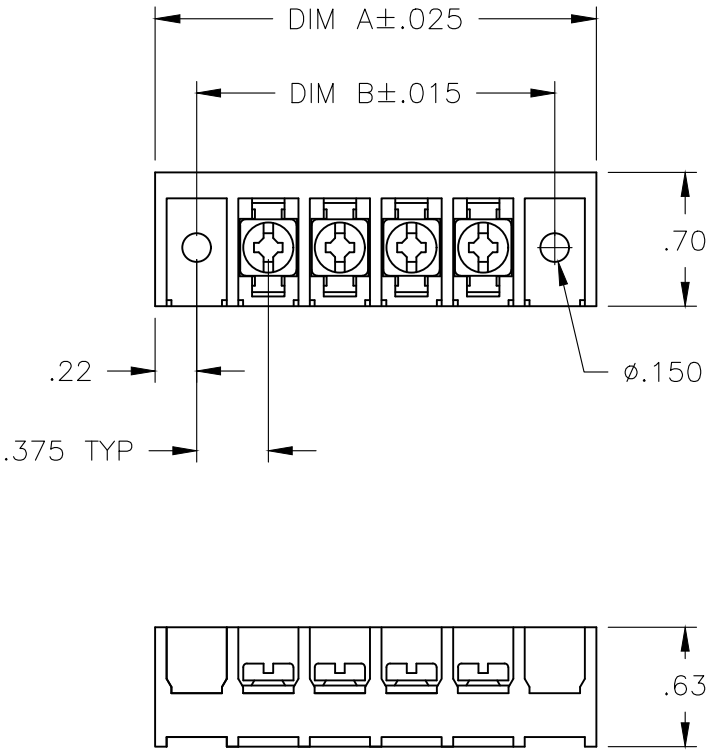
REVISIONS

| P | LTR | DESCRIPTION | DATE | DWN | APVD |
|---|-----|---------------------|-----------|-----|------|
| | B1 | PART STATUS UPDATED | 19JAN2018 | RK | PS |

MATERIALS:
HOUSING: THERMOPLASTIC, UL94V-0, BLACK.
TERMINALS: BRIGHT TIN PLATED, COPPER ALLOY.
SCREWS: 6-32, STEEL, ZINC PLATED WITH CLEAR CHROMATE.

ELECTRICAL:
MAXIMUM CURRENT: 25A
OPERATING VOLTAGE: 300V.
WIRE RANGE: 12-22 AWG


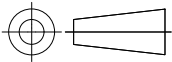
ENVIRONMENTAL:
OPERATING TEMP.: +150°C



OBSOLETE

| | | | | |
|--------|--------|----|-------------|-------------|
| 10.875 | 11.311 | 28 | 6TBV-28-006 | 2-1546692-2 |
| 10.500 | 10.936 | 27 | 6TBV-27-006 | 2-1546692-1 |
| 10.125 | 10.561 | 26 | 6TBV-26-006 | 2-1546692-0 |
| 9.750 | 10.186 | 25 | 6TBV-25-006 | 1-1546692-9 |
| 9.375 | 9.811 | 24 | 6TBV-24-006 | 1-1546692-8 |
| 9.000 | 9.436 | 23 | 6TBV-23-006 | 1-1546692-7 |
| 8.625 | 9.061 | 22 | 6TBV-22-006 | 1-1546692-6 |
| 8.250 | 8.686 | 21 | 6TBV-21-006 | 1-1546692-5 |
| 7.875 | 8.311 | 20 | 6TBV-20-006 | 1-1546692-4 |
| 7.500 | 7.936 | 19 | 6TBV-19-006 | 1-1546692-3 |
| 7.125 | 7.561 | 18 | 6TBV-18-006 | 1-1546692-2 |
| 6.750 | 7.186 | 17 | 6TBV-17-006 | 1-1546692-1 |
| 6.375 | 6.811 | 16 | 6TBV-16-006 | 1-1546692-0 |
| 6.000 | 6.436 | 15 | 6TBV-15-006 | 1546692-9 |
| 5.625 | 6.061 | 14 | 6TBV-14-006 | 1546692-8 |
| 5.250 | 5.686 | 13 | 6TBV-13-006 | 1546692-7 |
| 4.875 | 5.311 | 12 | 6TBV-12-006 | 1546692-6 |
| 4.500 | 4.936 | 11 | 6TBV-11-006 | 1546692-5 |
| 4.125 | 4.561 | 10 | 6TBV-10-006 | 1-1437655-9 |
| 3.750 | 4.186 | 9 | 6TBV-09-006 | 3-746988-4 |
| 3.375 | 3.811 | 8 | 6TBV-08-006 | 1-1437655-7 |
| 3.000 | 3.436 | 7 | 6TBV-07-006 | 1546692-4 |
| 2.625 | 3.061 | 6 | 6TBV-06-006 | 4-1546159-2 |
| 2.250 | 2.686 | 5 | 6TBV-05-006 | 1546692-3 |
| 1.875 | 2.311 | 4 | 6TBV-04-006 | 1-1437655-4 |
| 1.500 | 1.936 | 3 | 6TBV-03-006 | 1546692-2 |
| 1.125 | 1.561 | 2 | 6TBV-02-006 | 1546692-1 |

| DIM B | DIM A | NO OF POS | CATALOG NUMBER | PART NUMBER |
|-------|-------|-----------|----------------|-------------|
|-------|-------|-----------|----------------|-------------|

| | | | | | | | | |
|---|--|---|--|--------------------------|--|--------|-----------------|--|
| THIS DRAWING IS A CONTROLLED DOCUMENT. | | DWN S SCHLEGEL 10/23/06 |  TE Connectivity Ltd. | | | | | |
| | | CHK S YODER 10/23/06 | | | | | | |
| | | APVD S YODER 10/23/06 | | | | | | |
| | | PRODUCT SPEC | | | | | | |
| DIMENSIONS: INCHES | | TOLERANCES UNLESS OTHERWISE SPECIFIED: | | NAME — 6TBV-XX-006 | | | | |
|  | | 0 PLC ± — 1 PLC ± — 2 PLC ± .01 3 PLC ± .005 4 PLC ± — ± 1° ANGLES | | APPLICATION SPEC — | | | | |
| | | MATERIAL — | | FINISH — | | WEIGHT | | |
| | | CUSTOMER DRAWING | | SCALE NTS | | | SHEET 1 OF 2 | |

THIS DRAWING IS UNPUBLISHED.

RELEASED FOR PUBLICATION

© COPYRIGHT — TE Connectivity Ltd.

ALL RIGHTS RESERVED.

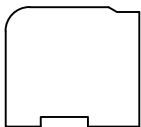
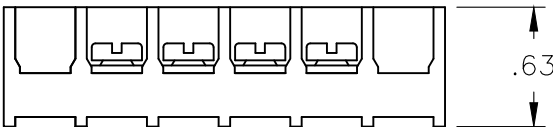
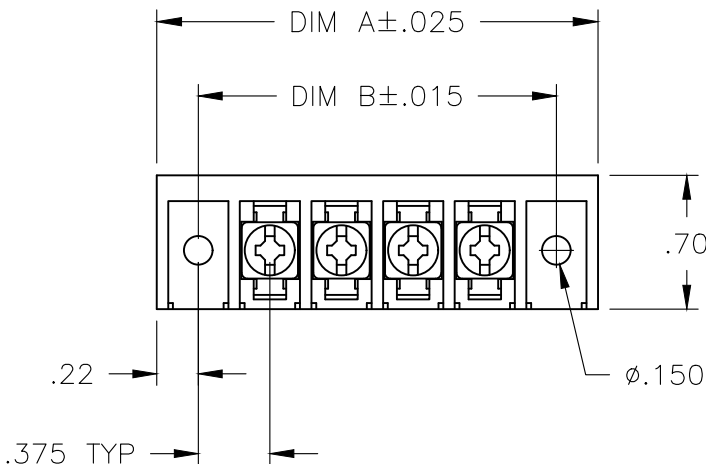
REVISIONS

| P | LTR | DESCRIPTION | DATE | DWN | APVD |
|---|-----|-------------|------|-----|------|
| | — | SEE SHEET 1 | — | — | — |

MATERIALS:
HOUSING: THERMOPLASTIC, UL94V-0, BLACK.
TERMINALS: BRIGHT TIN PLATED, COPPER ALLOY.
SCREWS: 6-32, STEEL, ZINC PLATED WITH CLEAR CHROMATE.

ELECTRICAL:
MAXIMUM CURRENT: 25A
OPERATING VOLTAGE: 300V.
WIRE RANGE: 12-22 AWG

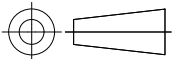
ENVIRONMENTAL:
OPERATING TEMP.: +150°C



| | | | |
|--------|--------|-----------|-------------|
| 10.875 | 11.311 | 28 | 4-1546692-9 |
| 10.500 | 10.936 | 27 | 4-1546692-8 |
| 10.125 | 10.561 | 26 | 4-1546692-7 |
| 9.750 | 10.186 | 25 | 4-1546692-6 |
| 9.375 | 9.811 | 24 | 4-1546692-5 |
| 9.000 | 9.436 | 23 | 4-1546692-4 |
| 8.625 | 9.061 | 22 | 4-1546692-3 |
| 8.250 | 8.686 | 21 | 4-1546692-2 |
| 7.875 | 8.311 | 20 | 4-1546692-1 |
| 7.500 | 7.936 | 19 | 4-1546692-0 |
| 7.125 | 7.561 | 18 | 3-1546692-9 |
| 6.750 | 7.186 | 17 | 3-1546692-8 |
| 6.375 | 6.811 | 16 | 3-1546692-7 |
| 6.000 | 6.436 | 15 | 3-1546692-6 |
| 5.625 | 6.061 | 14 | 3-1546692-5 |
| 5.250 | 5.686 | 13 | 3-1546692-4 |
| 4.875 | 5.311 | 12 | 3-1546692-3 |
| 4.500 | 4.936 | 11 | 3-1546692-2 |
| 4.125 | 4.561 | 10 | 3-1546692-1 |
| 3.750 | 4.186 | 9 | 3-1546692-0 |
| 3.375 | 3.811 | 8 | 2-1546692-9 |
| 3.000 | 3.436 | 7 | 2-1546692-8 |
| 2.625 | 3.061 | 6 | 2-1546692-7 |
| 2.250 | 2.686 | 5 | 2-1546692-6 |
| 1.875 | 2.311 | 4 | 2-1546692-5 |
| 1.500 | 1.936 | 3 | 2-1546692-4 |
| 1.125 | 1.561 | 2 | 2-1546692-3 |
| DIM B | DIM A | NO OF POS | PART NUMBER |

THIS DRAWING IS A CONTROLLED DOCUMENT.

DIMENSIONS:
INCHES



MATERIAL

TOLERANCES UNLESS OTHERWISE SPECIFIED:

0 PLC ± —
1 PLC ± —
2 PLC ± .01
3 PLC ± .005
4 PLC ± —
ANGLES ± 1°

FINISH

DWN 10/23/06

S SCHLEGEL

CHK 10/23/06

S YODER

APVD 10/23/06

S YODER

PRODUCT SPEC

—

APPLICATION SPEC

—

WEIGHT

—

CUSTOMER DRAWING



TE Connectivity Ltd.

NAME

6TBV-XX-006

SIZE

CAGE CODE

DRAWING NO

RESTRICTED TO

A3

00779

1-1437655-4

—

SCALE NTS

SHEET 2 of 2

REV B1

Mouser Electronics

Authorized Distributor

Click to View Pricing, Inventory, Delivery & Lifecycle Information:

[TE Connectivity:](#)

[1546692-1](#)