

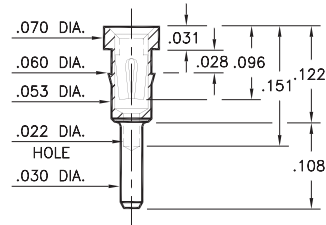
PIN RECEPTACLES

FOR .015" - .025" DIAMETER PINS

0501

0501-0-15-XX-30-XX-04-0

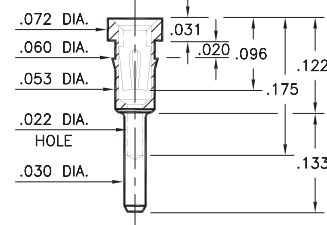
Press-fit in .057 mounting hole



8427

8427-0-15-XX-30-XX-04-0

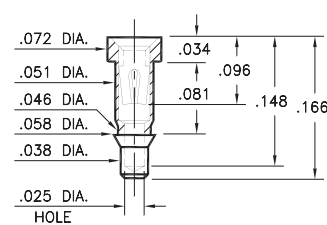
Press-fit in .057 mounting hole



1434

1434-0-15-XX-30-XX-10-0

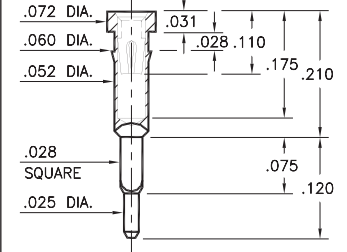
Press-fit in .055 mounting hole



9970

9970-0-15-XX-30-XX-04-0

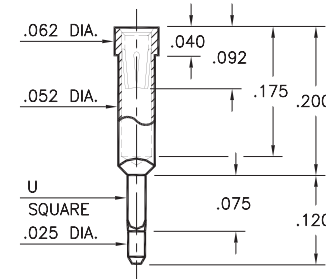
Square press-fit in .032 ± .002 plated through-hole



5970

5970-X-15-XX-32-XX-04-0

Square press-fit for .032 or .039 ± .002 plated through-hole

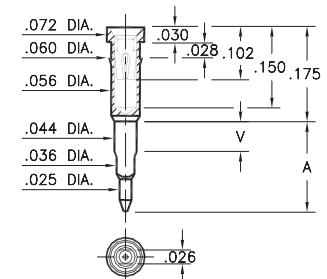


Basic Part Number	U Square	Mounting Hole
5970-1	.028	.032
5970-2	.034	.039

0477/0478

047X-0-18-XX-30-XX-04-0

Solderless press-fit in .038 ± .003 / -.002 plated through-hole (use 1.1mm drill prior to plating)

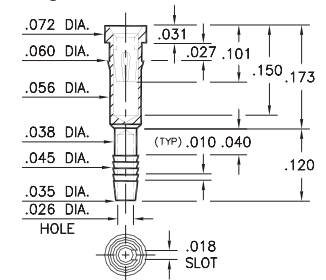


Basic Part Number	Board Thickness	Length V	Length A
0477-0	.062	.075	.175
0478-0	.125	.140	.250

4612

4612-0-31-XX-30-XX-04-0

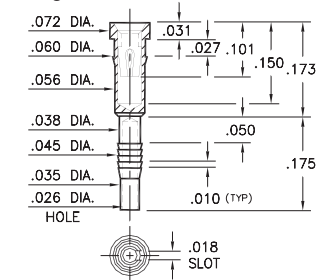
Compliant press-fit in .040 ± .003 plated through-hole. For .060" → .100" thick board



4613

4613-0-31-XX-30-XX-04-0

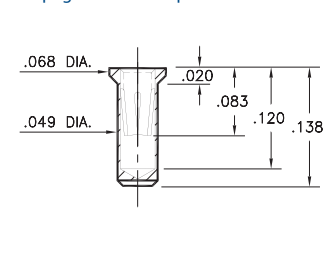
Compliant press-fit in .040 ± .003 plated through-hole. For .090" → .130" thick board



0680

0680-0-15-XX-32-XX-10-0

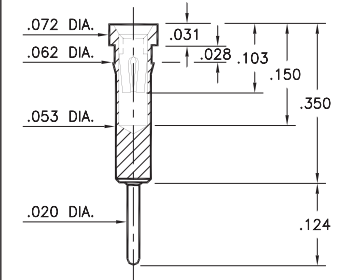
Solder mount in .051 min. mounting hole. Also available on 16mm wide carrier tape: 1,700 parts per 13" reel. See page 194.4 for Tape & Reel details



0149

0149-0-15-XX-30-XX-04-0

Press-fit in .059 mounting hole



SPECIFICATIONS:

Shell Material: Brass Alloy 360, 1/2 Hard

Contact Material: Beryllium Copper Alloy 172, HT

Dimensions: Inches

Tolerances On: Lengths: ± .005

Diameters: ± .002

Angles: ± 2°



ORDER CODE: XXXX - X - XX - XX - XX - XX - XX - 0

BASIC PART #

SPECIFY SHELL FINISH:

- 01 200 μ" TIN/LEAD OVER NICKEL
- ◆ 80 200 μ" TIN OVER NICKEL (RoHS)
- ◆ 15 10 μ" GOLD OVER NICKEL (RoHS)

SPECIFY CONTACT FINISH:

- 02 100 μ" TIN/LEAD OVER NICKEL
- ◆ 84 100 μ" TIN OVER NICKEL (RoHS)
- ◆ 27 30 μ" GOLD OVER NICKEL (RoHS)

SELECT CONTACT:

#30 or #32 CONTACT (DATA ON PAGE 253)

(For alternate contact choices, see groups B and C on page 248)



Mouser Electronics

Authorized Distributor

Click to View Pricing, Inventory, Delivery & Lifecycle Information:

Mill-Max:

[1434-0-15-01-30-02-10-0](#) [1434-0-15-01-30-27-10-0](#) [0680-0-15-01-32-27-10-0](#) [0680-0-15-01-32-02-10-0](#) [0501-0-15-01-30-02-04-0](#) [0501-0-15-01-30-27-04-0](#) [0478-0-18-01-30-02-04-0](#) [0478-0-18-01-30-27-04-0](#) [0477-0-18-01-30-02-04-0](#) [0477-0-18-01-30-27-04-0](#) [0149-0-15-01-30-02-04-0](#) [0149-0-15-01-30-27-04-0](#) [0149-0-15-15-30-27-04-0](#) [0477-0-18-15-30-27-04-0](#) [0478-0-18-15-30-27-04-0](#) [0501-0-15-15-30-27-04-0](#) [0680-0-15-15-32-27-10-0](#) [1434-0-15-15-30-27-10-0](#) [9970-0-15-15-30-27-04-0](#) [1434-0-15-00-00-00-10-0](#) [0477-0-18-00-00-00-04-0](#) [5970-1-15-00-00-00-04-0](#) [5970-2-15-00-00-00-04-0](#) [9970-0-15-00-00-00-04-0](#) [8427-0-15-00-00-00-04-0](#) [0501-0-15-00-00-00-04-0](#) [0680-0-15-00-00-00-10-0](#) [4613-0-31-00-00-00-04-0](#) [0478-0-18-00-00-00-04-0](#) [0149-0-15-00-00-00-04-0](#) [4612-0-31-00-00-00-04-0](#) [0680-0-15-01-32-14-10-0](#) [5970-1-15-01-32-14-04-0](#) [0501-0-15-01-30-14-04-0](#) [0478-0-18-01-30-14-04-0](#) [0680-0-15-80-32-14-10-0](#) [0501-0-15-80-30-14-04-0](#) [0477-0-18-01-30-14-04-0](#) [0478-0-18-80-30-14-04-0](#) [0149-0-15-80-30-14-04-0](#) [0477-0-18-80-30-14-04-0](#) [0149-0-15-01-30-14-04-0](#) [1434-0-15-80-30-14-10-0](#) [5970-1-15-80-32-14-04-0](#) [8427-0-15-01-30-14-04-0](#) [4612-0-31-01-30-14-04-0](#) [4613-0-31-01-30-14-04-0](#) [5970-2-15-15-32-14-04-0](#) [4613-0-31-80-30-14-04-0](#) [5970-2-15-01-32-14-04-0](#) [5970-2-15-80-32-14-04-0](#) [8427-0-15-80-30-14-04-0](#) [5970-1-15-15-32-14-04-0](#) [4612-0-31-80-30-14-04-0](#)