

**OAC Series**

**AC Output Modules**

cULus File E29244

Users should thoroughly review the technical data before selecting a product part number. It is recommended that users also seek out the pertinent approvals files of the agencies/laboratories and review them to ensure the product meets the requirements for a given application.

**Features**

- .6" (15.2mm) thick package.
- 4000V rms optical isolation.
- High immunity to false operation.
- Series compatible.
- Output modules can be controlled from sinking or sourcing logic.
- Compatible with 2IOM series mounting boards.

**Engineering Data**

- Switch Form:** 1 Form A (SPST-NO)
- Duty:** Continuous.
- Operating Temperature:** -30°C to +80°C.
- Storage Temperature:** -30°C to +100°C.
- Potting Compound Flammability:** UL94V-0.
- Solderability:** 260°C for 5 seconds, maximum.
- Approximate Weight:** 1.38 oz. (35g).

**Ordering Information**

Typical Part Number >	OAC	-5	A
<b>1. Basic Series:</b> OAC = AC output module — black case			
<b>2. Input Voltage:</b> 5 = 5VDC 15 = 15VDC 24 = 24VDC			
<b>3. Output:</b> Blank = 3A, 12-120VAC, zero voltage turn-on output A = 3A, 24-280VAC, zero voltage turn-on output H = 5A, 24-280VAC, zero voltage turn-on output R = 24-280VAC, Random Turn-On			

**Our authorized distributors are more likely to maintain the following items in stock for immediate delivery.**

- |        |        |         |
|--------|--------|---------|
| OAC-5  | OAC-5H | OAC-24  |
| OAC-5A | OAC-15 | OAC-24A |

**Input Specifications**

Parameter	Conditions	Units	OAC-5 OAC-5A OAC-5H OAC-5R			OAC-15 OAC-15A OAC-15H OAC-15R			OAC-24 OAC-24A OAC-24H OAC-24R		
			Min.	Typ.	Max.	Min.	Typ.	Max.	Min.	Typ.	Max.
Control Voltage Range $V_{IN}$		VDC	3	5	8	9	15	18	18	24	32
Must Operate Voltage $V_{IN(OP)}$ (Min.)		VDC			3			9			18
Must release Voltage $V_{IN(REL)}$ (Min.)		VDC	1			1			1		
Input Current (Max.)	@ $V_{IN}$ =Nominal	mADC	2 - 10			6 - 12			4 - 12		
Input Resistance $R_{IN}$		Ohms	800			1500			2600		

PIN-3 must be positive with respect to PIN-4 for correct operation.

**OAC Series** (Continued)

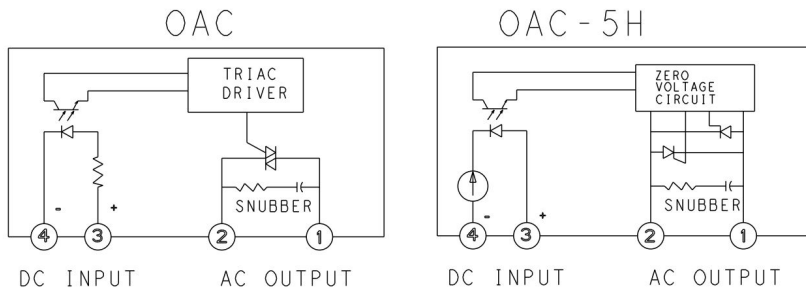
**AC Output Modules**

Output Specifications (47 to 63 Hz, @+25°C unless otherwise specified)

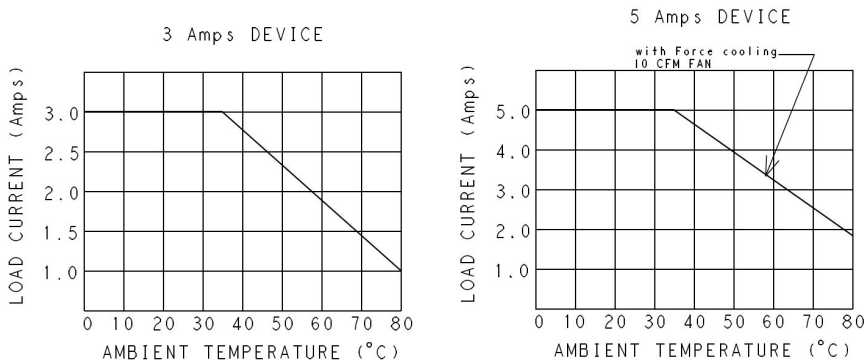
Parameter	Conditions	Units	OAC-5 OAC-15 OAC-24			OAC-5A OAC-15A OAC-24A			OAC-5H OAC-15H OAC-24H			OAC-5R OAC-15R OAC-24R		
			Min.	Typ.	Max.	Min.	Typ.	Max.	Min.	Typ.	Max.	Min.	Typ.	Max.
Load Voltage VL		V rms	12		120	24		280	24		280	24		280
Repetitive Blocking Voltage		V peak			400			600			600			600
Load Current IL*		A rms	.05		3	.05		3	.05		5	.05		5
Single Cycle Surge Current		A peak		208			208		300				300	
Leakage Current (Off-State)	VL=280VAC	mA rms			5			5			5			5
On-State Voltage Drop	IL=Max.	V rms			1.8			1.8			1.6			1.6
Static dv / dt (Off-State)		V/μs		475			475		300				300	
Turn-On Time	@f=60/50 Hz.	ms		8.3 / 10			8.3 / 10		8.3 / 10				0.1	
Turn-Off Time		ms		8.3 / 10			8.3 / 10		.3 / 10				8.3	
HP / Rating	@ 240VAC	HP		1/4			1/4		1/2				1/2	

\* See Derating curve

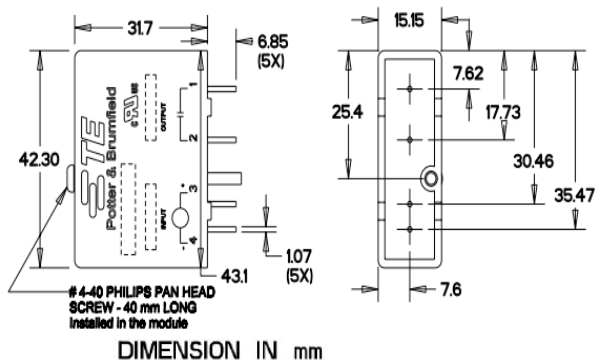
**OAC Operating Diagram**



**OAC Derating Diagram**



**Outline Dimensions**



# Mouser Electronics

Authorized Distributor

Click to View Pricing, Inventory, Delivery & Lifecycle Information:

[TE Connectivity:](#)

[OAC-5A](#) [OAC-5H](#) [OAC-24A](#)