

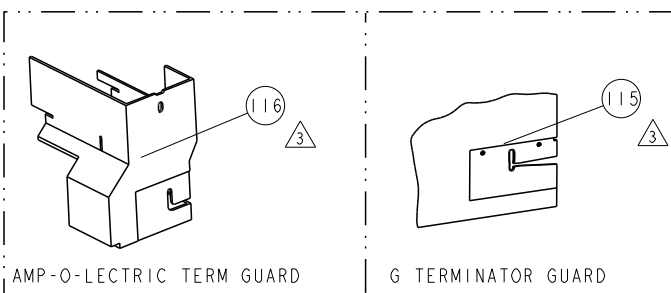
8				7			
THIS DRAWING IS UNPUBLISHED.				RELEASED FOR PUBLICATION			
COPYRIGHT 20				20			
BY TYCO ELECTRONICS CORPORATION, ALL RIGHTS RESERVED.							
PART NUMBER	REV	FIRST USED	POWER UNIT	FEED TYPE	DESCRIPTION		
1855228-1	A	122500-1	LEADMAKER	POST FEED	CUTS CARRIER		
1855228-2	A	565435-5	BENCH MODEL K	PRE FEED	CUTS CARRIER		
1855228-3	A	354500-1	BENCH MODEL G	PRE FEED	CUTS CARRIER		
1855228-6	A	122500-1	LEADMAKER	POST FEED	CONTINUOUS CARRIER		
7-1855228-7	A	-	-	-	SPARE PARTS		


△ RECOMMENDED SPARE PARTS

△ GREASE LIGHTLY

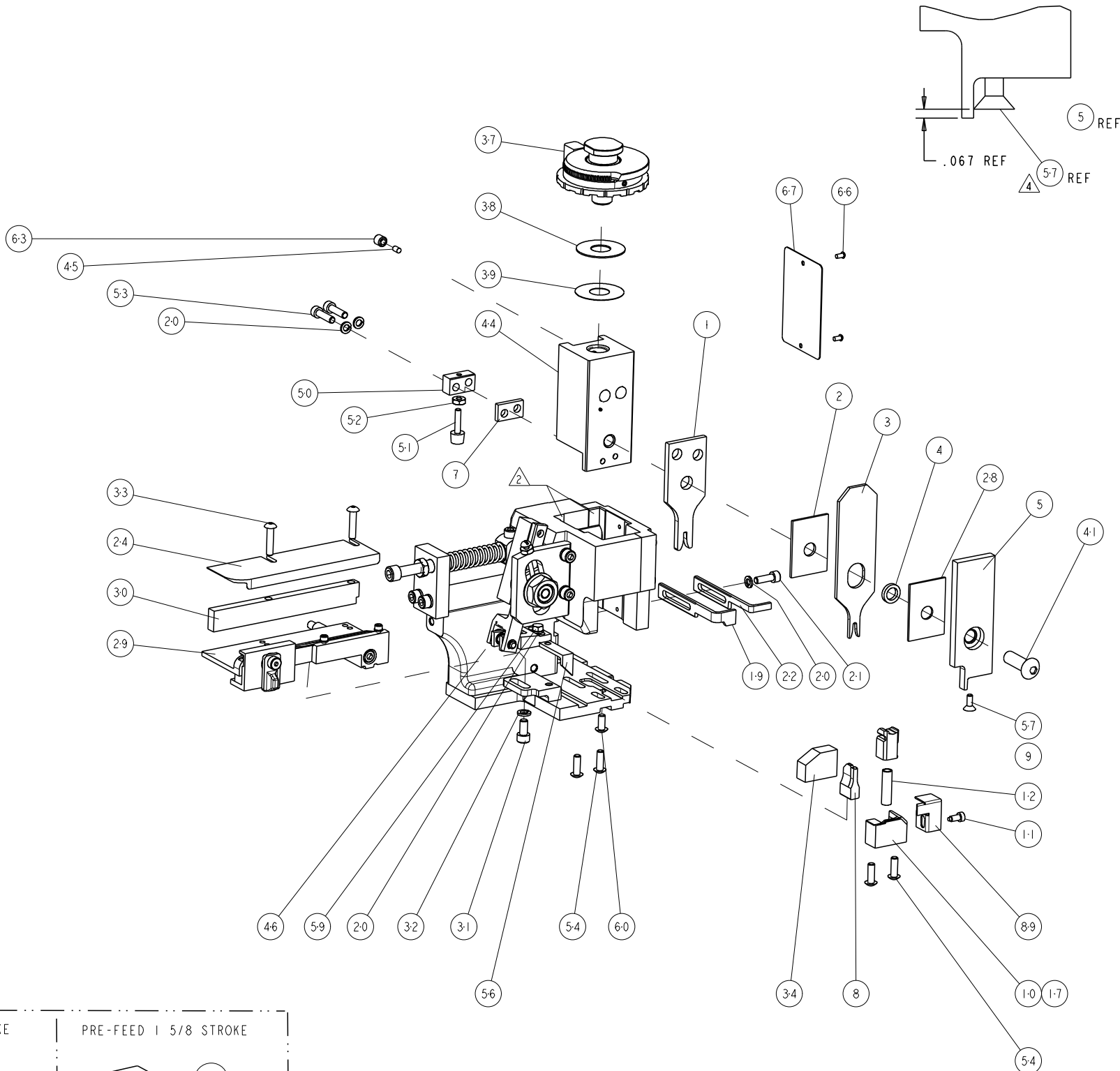
△ GUARD MUST BE IN PLACE WHEN OPERATING APPLICATOR IN A BENCH MACHINE

\* WARNING  
ON INSTALLATION, SET WIRE DISC TO LARGEST WIRE SIZE SETTING. USE OF SETTINGS BELOW MIN. REQUIRED CRIMP HEIGHT SETTING WILL CAUSE DAMAGE TO CRIMP TOOLING.



TERMINAL NAME: TAXI				TERMINAL F GT 150							
TE PN		MFR PN		PACKARD TERMINAL - PACKARD CRIMP SPECS							
1949312-1		15471370				CRIMP HEIGHT		WIRE SIZE		REF SETTING	
1949571-1		15326429				1.25±0.05mm [.049±.002]		0.8mm <sup>2</sup>		C1	
-		-				-		-		-	
-		-				-		-		-	
-		-				-		-		-	
-		-				-		-		-	
-		-				-		-		-	
-		-		CRIMP		SIZE		TYPE		RANGE	
TE SEAL PN		MFR SEAL PN		WIRE		2.03mm [.080]		F		0.8mm	
1949045-1		15305351		INSUL		2.89mm [.114]		O		Ø2.02-1.70	
-		-				-		-		-	
WIRE STRIP LENGTH		TERM APPL SPEC		FEED		APPLICATOR INSTRUCTIONS				SET UP GAGE	
4.95-5.34		NONE		10.92mm		408-8040				458637-1	

LOC		DIST		REVISIONS					
A		66		P	LYR	DESCRIPTION	DATE	DWN	APVD
					A	RELEASED	07NOV2007	BH	BH
					A1	ECR-07-026795	07NOV2007	BH	BH
					A2	ECR-14-004963	08APR2014	YY	TE



# Mouser Electronics

Authorized Distributor

Click to View Pricing, Inventory, Delivery & Lifecycle Information:

[TE Connectivity:](#)

[1855228-2](#)