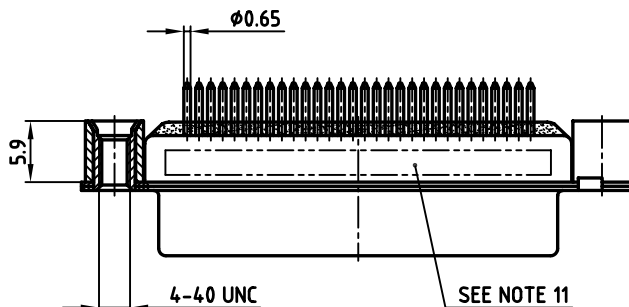
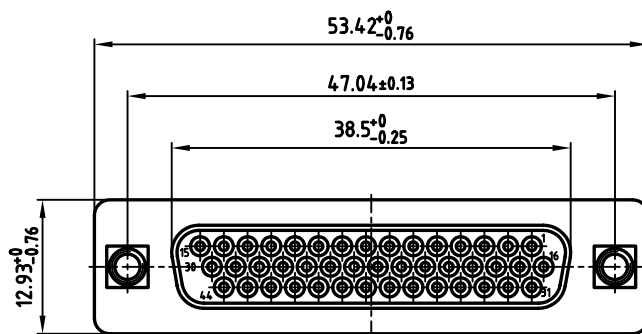
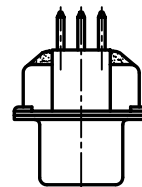
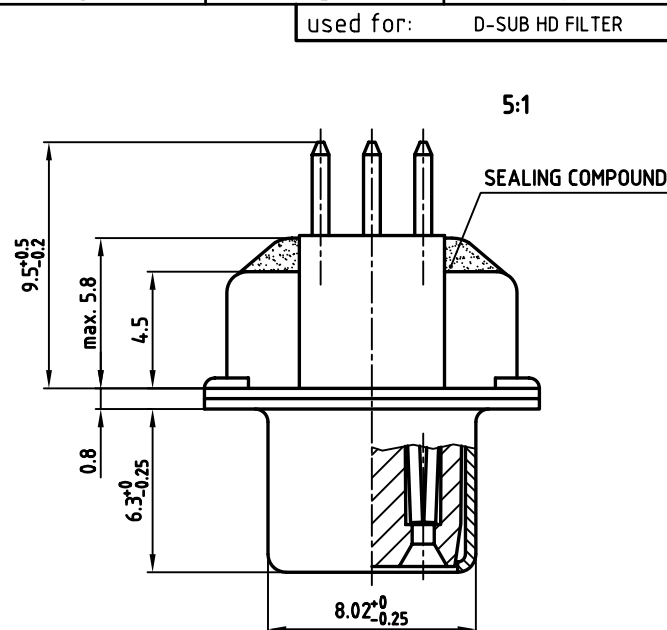


P.C.B. HOLE DRILLINGS



SEE NOTE 11



# NOTES:

1. RoHS COMPLIANT
2. SUITABLE FOR WAVESOLDERING
3. METALSHELLS: STEEL; min. 315µ" TIN over 40-80µ" NICKEL
4. INSULATORS: HIGH TEMPERATURE PLASTIC UL 94 V-0, BLACK
5. CONTACTS: COPPER ALLOY  
PLATING MATING AREA: 8µ" HARD GOLD OVER min. 50µ" NICKEL  
CONTACT TAILS PRETINNED
6. THREADED REAR SPACER: COPPER ALLOY; min. 200µ" TIN over 80µ" NICKEL
7. SLEEVE: COPPER ALLOY; min. 200µ" TIN over 80µ" NICKEL
8. CAPACITANCE: SEE TABLE
9. DIELECTRIC WITHSTANDING VOLTAGE: 300V DC
10. MAXIMUM TORQUE VALUE FOR THREAD: 6 in.LB
11. CONNECTOR IS PART MARKED: **PART-NO. CONEC ABC**

CAPACITANCE	PART NO.
180pF ±20%	<b>242A27520X</b>
370pF ±20%	<b>242A18240X</b>
830pF ±20%	<b>242A18280X</b>

Directive 2002/95/EC  
RoHS  
Compliant

APPROVAL * FREIGABE * DEBLOCAGE * AUTOR/ZACON * APPROVAL	
CUSTOMER APPROVAL DATE:	
NAME:	TITLE:
COMPANY NAME:	
APPROVAL * FREIGABE * DEBLOCAGE * AUTOR/ZACON * APPROVAL	

THIS DRAWING MAY NOT BE COPIED OR  
REPRODUCED IN ANY WAY, AND MAY NOT  
BE PASSED ON TO A THIRD PARTY WITHOUT  
WRITTEN PERMISSION.  
OWNERSHIP AND COPYRIGHT OF CONEC GmbH  
DO NOT ALTER CAD DRAWING BY HAND

rev.	description	date	name
1 x b	Ä 2521	09.06.2006	Lehmen
a	Origin		

tolerance	dim. in mm
2003	date
drawn	16.09.
appd.	19.09.
norm	DIN 41652
d-old	

scale:	2:1 (5:1)
material:	SEE NOTES
title: <b>D-SUB HD FILTER FEMALE</b> 44pos. SOLDER PIN STRAIGHT with threaded rear spacer	
dwg no:	AutoCAD 2006
<b>24K1A443</b>	
part no:	SEE TABLE

# Mouser Electronics

Authorized Distributor

Click to View Pricing, Inventory, Delivery & Lifecycle Information:

[CONEC:](#)

[242A18280X](#)