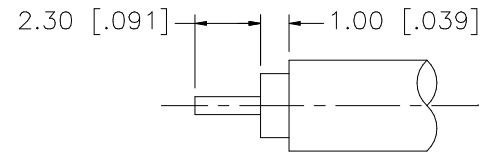
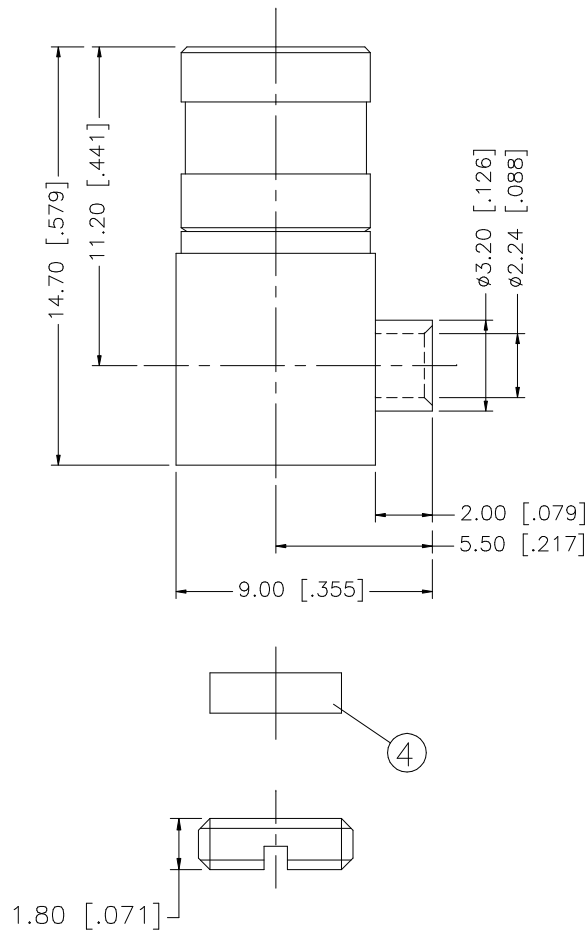
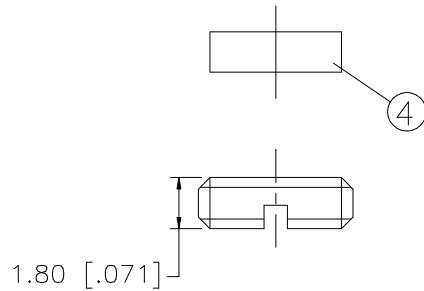


REV.	DATE	DESCRIPTION
A	06/05/03	UPDATE DRAWING FORMAT



RECOMMENDED CABLE STRIPPING DIMENSIONS



				UNLESS OTHERWISE SPECIFIED DIMENSIONS ARE IN MILLIMETERS. DIMENSIONS IN [ ] ARE IN INCHES AND FOR CUSTOMER REFERENCE ONLY.	APPROVALS	DATE	<b>Amphenol Connex</b>				
8					DRAWN	G.R.S.	06/05/03	PART DESCRIPTION <b>SMB R/A DIRECT SOLDER PLUG (FOR .085", .086" SEMI-RIGID CABLE)</b>			
7					CHECKED						
6					ISSUED						
5	COVER	BRASS	GOLD	1	SHEET	1 OF 1					
4	INSULATOR	TEFLON	NATURAL	1				PART NO. 142214			
3	CONTACT PIN	BER. COPPER	GOLD	1				DWG. NO. 142214.DWG			
2	INSULATOR	TEFLON	NATURAL	1				REV. A			
1	BODY	BRASS	GOLD	1				SIZE A			
DESCRIPTION				MATERIAL	FINISH	QTY	SCALE NA				

UNLESS OTHERWISE SPECIFIED TOLERANCES FOR MILLIMETERS ARE:  
0.5 - 8mm ± 0.20mm  
8 - 30mm ± 0.40mm  
30 - 120mm ± 0.50mm  
UNLESS OTHERWISE SPECIFIED TOLERANCES FOR INCHES ARE:  
.020 - .315 = ± 0.007"  
.315 - 1.180 = ± 0.015"  
1.180 - 4.724 = ± 0.020"

DO NOT SCALE DRAWING

CAD FILE C:/142/142214.DWG

# Mouser Electronics

Authorized Distributor

Click to View Pricing, Inventory, Delivery & Lifecycle Information:

[Amphenol:](#)

[142214](#)