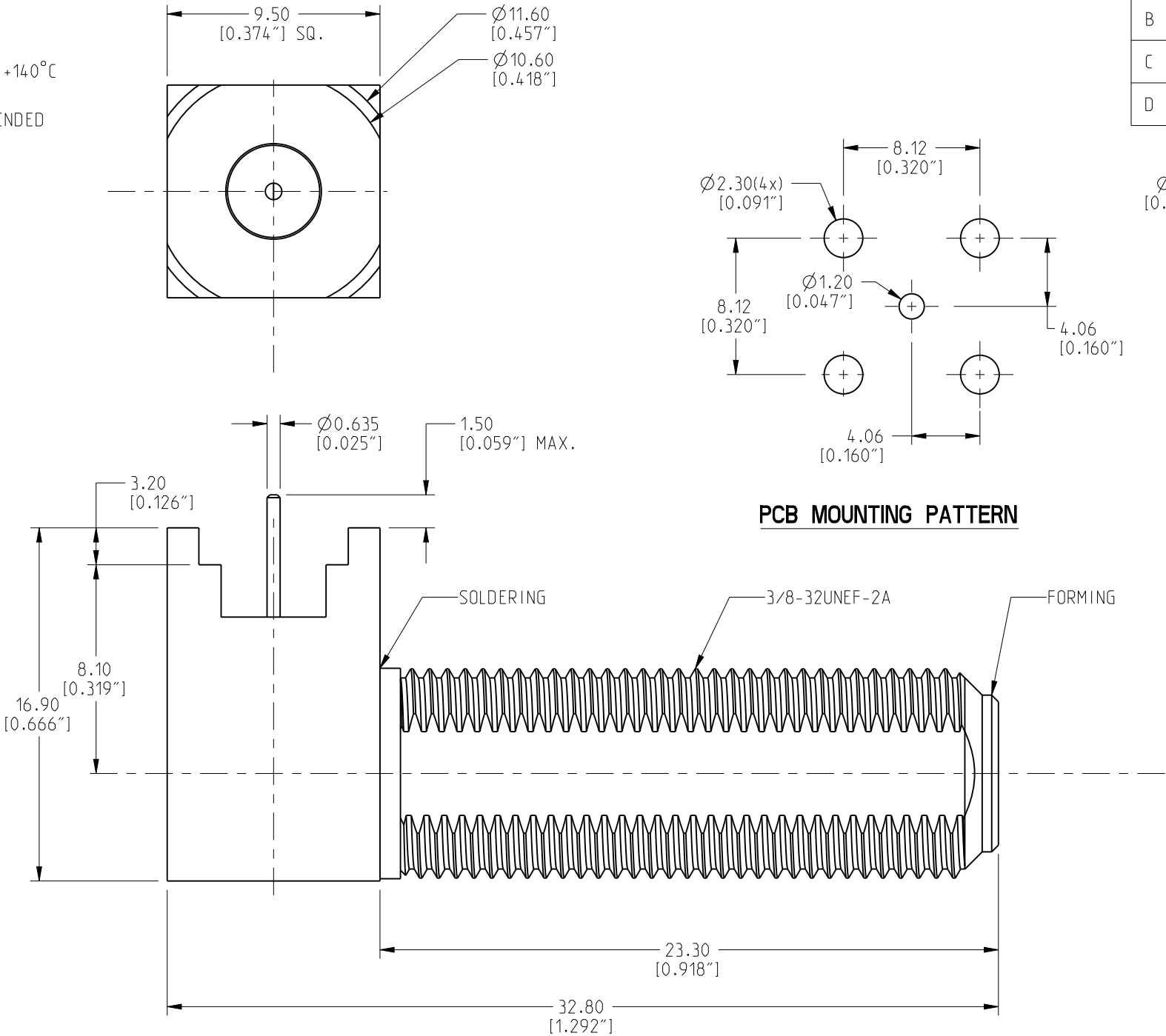


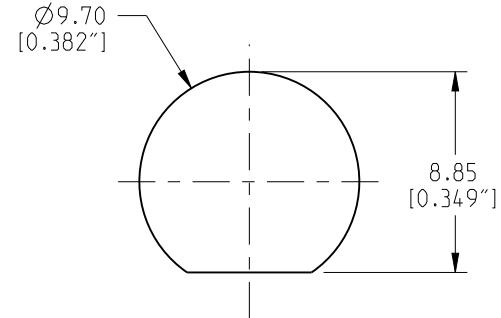
NOTE:

1. SPECIFICATIONS

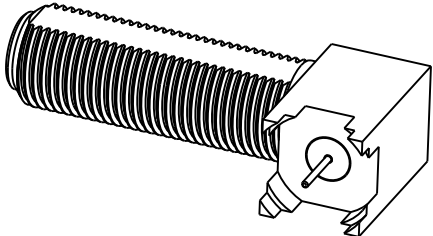
- NOMINAL IMPEDANCE: 75 OHMS
- FREQUENCY RANGE: 0 TO 1.5 GHz
- VOLTAGE RATING: 500V (ms)
- OPERATING TEMPERATURE: -40°C ~ +140°C
- MATING: 200 CYCLES
- MATING TORQUE: 15 in/lbs RECOMMENDED



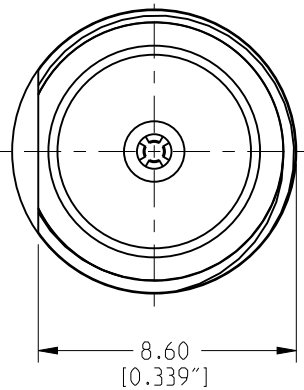
PCB MOUNTING PATTERN



PANEL CUTOUT



SCALE 1.500



INSULATOR	TEFLON	NATURAL	2
CONTACT PIN	BRASS	BRT. TIN	1
CONTACT PIN	BRASS	BRT. TIN	1
BODY	BRASS	NICKEL	1
DESCRIPTION	MATERIAL	FINISH	QTY

UNLESS OTHERWISE SPECIFIED, DIMENSIONS ARE IN INCHES AND TOLERANCES ARE:  
2 PLACE DECIMAL 3 PLACE DECIMAL ANGLES  
±.015 (0,381 mm) ±.005 (0,127 mm) ± 1°

NOTICE - These drawings, specifications, or other data (1) are, and remain the property of Amphenol Corp. (2) must be returned upon request; and (3) are confidential and not to be disclosed to any person other than those to whom they are given by Amphenol Corp. The furnishing of these drawings, specifications, or other data by Amphenol Corp., or to any other person to anyone for any purpose is not to be regarded by implication or otherwise in any manner licensing, granting rights or permitting such holder or any other person to manufacture, use or sell any product, process or design, patented or otherwise, that may in any way be related to or disclosed by said drawings, specifications, or other data.

MATERIAL  
SEE TABLE

REFERENCE  
TASK-698

DRAWN  
HARI R  
ENGINEER  
G.R.S  
APPROVED

DATE  
11-Jul-11  
DATE  
25-Jul-08  
DATE

CAD FILE  
Root Folder:/connector/:222128-12

TITLE  
F SERIES RIGHT ANGLE  
PCB RECEPTACLE SHORT  
BODY

Amphenol  
Connex

SCALE: 4.0:1 SHEET 1 OF 1

DWG SIZE  
B  
DRAWING NO.  
222128-12

REV  
D

222128-12

DRAWING NO.

THIRD ANGLE PROJ.



REV

NC

REVISIONS

DESCRIPTION

DATE

ECO

APPR

INITIAL RELEASE

22-Aug-07

--

--

A

REVISE INSULATOR MATERIAL TO TEFLON

08-Jan-08

--

--

B

REMOVE POLY PRO INSULATOR FROM  
MATERIAL CALLOUT, ADD SPECIFICATIONS

10-Jul-08

--

--

C

REVISE LEG LENGTH TO 3.2MM,  
BODY CENTERLINE TO 8.1MM

25-Jul-08

--

--

D

CONTACT PROJECTION 1.50 [0.059"] MAX WAS  
2.40 [0.095"] MAX

12-Jul-11

2196

HR

# Mouser Electronics

Authorized Distributor

Click to View Pricing, Inventory, Delivery & Lifecycle Information:

[Amphenol:](#)

[222128-12](#)