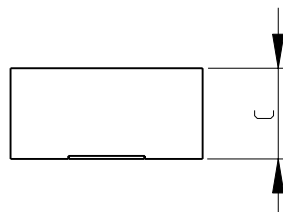
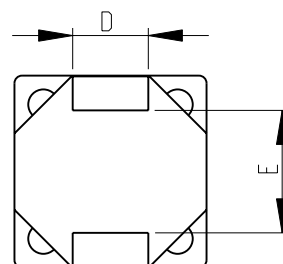
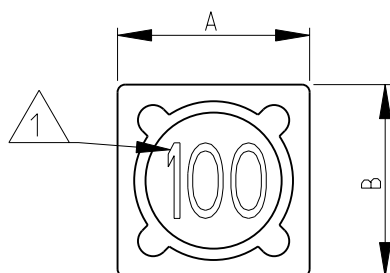


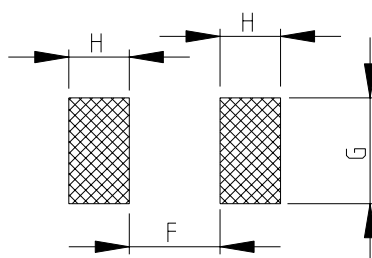
LOC	DIST	REVISIONS					
E	B	P	LTR	DESCRIPTION	DATE	DWN	APVD
			BC 1	REVISED PER ECO-11-005150	28MAR2011	RK	HMR



1 INDUCTANCE CODE

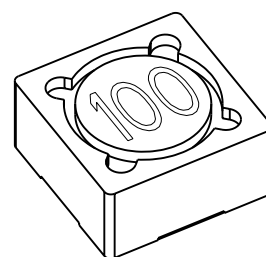
2 FOR FURTHER INFORMATION SEE DATA SHEET FOR 3631 SERIES-SHIELDED SMD POWER INDUCTORS

RECOMMENDED LAND PATTERN FOR 3631B, 3631C SERIES

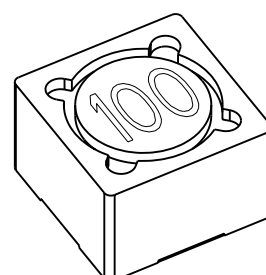


RoHS Compliant

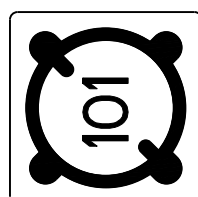
SERIES 3631B AS SHOWN



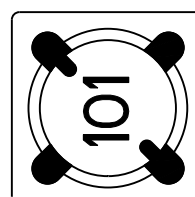
SERIES 3631C AS SHOWN



DESCRIPTION AND
DETAIL OF CHANGE



3631B-3631C SERIES



3631B-3631C SERIES

3631C	12.7	12.7	8.0	5.0	8.1	6.0	7.0	4.0
3631B	12.7	12.7	6.0	5.0	8.1	6.0	7.0	4.0
SERIES	A±0.3	B±0.3	C±0.5	D±0.2	E (typ)	F (ref)	G (ref)	H (ref)

2008

RELEASED FOR PUBLICATION

THIS DRAWING IS UNPUBLISHED.

ALL RIGHTS RESERVED.

BY -

COPYRIGHT 2008

©

DIMENSIONS:

mm

DWN SUBHASH.M 02-Sep-08

MATERIAL

FINISH

CHK PRAKASH.S 02-Sep-08

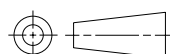
APVD STEPHEN.P 02-Sep-08

PRODUCT SPEC

APPLICATION SPEC

WEIGHT

0 PLC ±0.5
1 PLC ±0.2
2 PLC ±0.1
3 PLC ±
4 PLC ±
ANGLES ±5°



CUSTOMER DRAWING

TE

TE Connectivity

NAME

SHIELDED SMD POWER INDUCTORS
SERIES 3631

SIZE

CAGE CODE

DRAWING NO

RESTRICTED TO

A 4

00779

C-1625812

-

SCALE 2:1

SHEET 1 OF 1

REV BC 1

Mouser Electronics

Authorized Distributor

Click to View Pricing, Inventory, Delivery & Lifecycle Information:

[TE Connectivity:](#)

[3631B101LL](#)