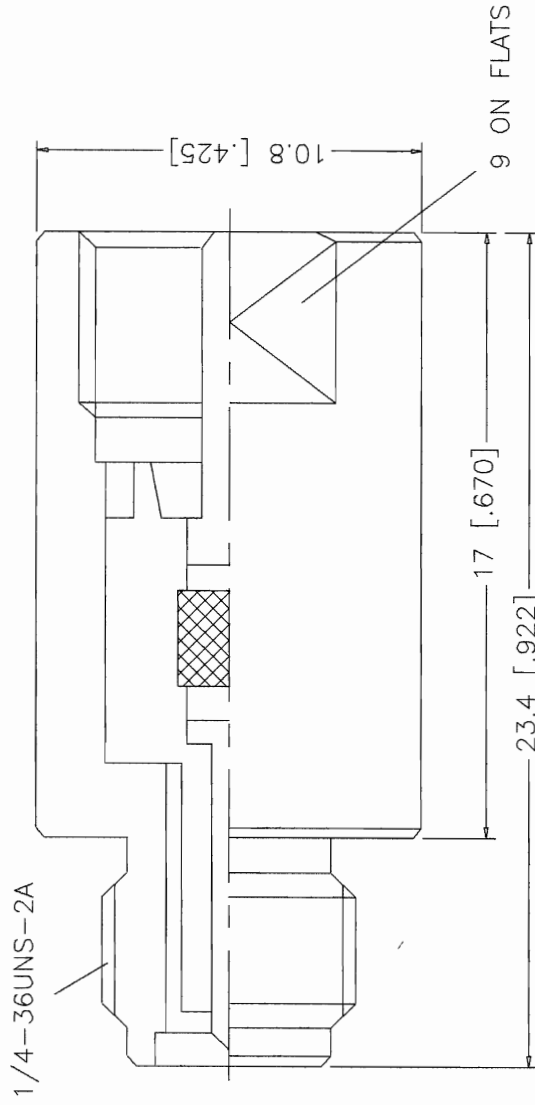



REV.	DATE	DESCRIPTION
A	09/03/99	MODIFY FILE NAME AND REFORMAT



DESCRIPTION		MATERIAL	FINISH	UNLESS OTHERWISE SPECIFIED DIMENSIONS ARE IN MILLIMETERS		APPROVALS	DATE
1	BODY	BRASS	NICKEL	DIMENSIONS IN [] ARE IN INCHES FOR CUSTOMER REFERENCE ONLY		DRAWN G.R.S.	09/03/99
2	INSULATOR	TEFLON	NATURAL	UNLESS OTHERWISE SPECIFIED TOLERANCES FOR MILLIMETERS ARE:		CHECKED	
3	CONTACT PIN	PHOS. BRONZE	GOLD	0.5-6 = ± 0.2			
4				6-30 = ± 0.4			
5				30-120 = ± 0.6			
6				120-315 = ± 1			
7				315-1000 = ± 1.6			
8				1000-2000 = ± 2.4	DO NOT SCALE DRAWING		
							
TITLE				FME PLUG TO SMA JACK ADAPTER			
SIZE	FSCM NO.	DWG. NO.		REV.			
A	99001	192112.DWG		A			
SCALE	NA	PART NO.	192112	SHEET		1 OF 1	

Mouser Electronics

Authorized Distributor

Click to View Pricing, Inventory, Delivery & Lifecycle Information:

[Amphenol:](#)

[192112](#)