

4

3

2

1

THIS DRAWING IS UNPUBLISHED.

RELEASED FOR PUBLICATION

© COPYRIGHT

ALL RIGHTS RESERVED.

LOC

DIST


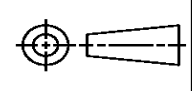
REVISIONS


P	LTR	DESCRIPTION	DATE	DWN	APVD
	B1	ECR-14-002337	18FEB2014	GK	HMR

REPLACED BY OCEAN STYLE APPLICATOR PART
NUMBER 2151106-1

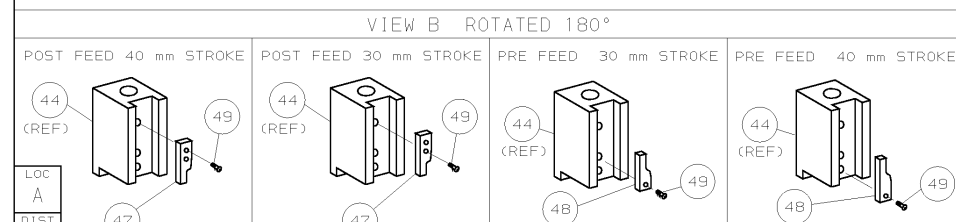
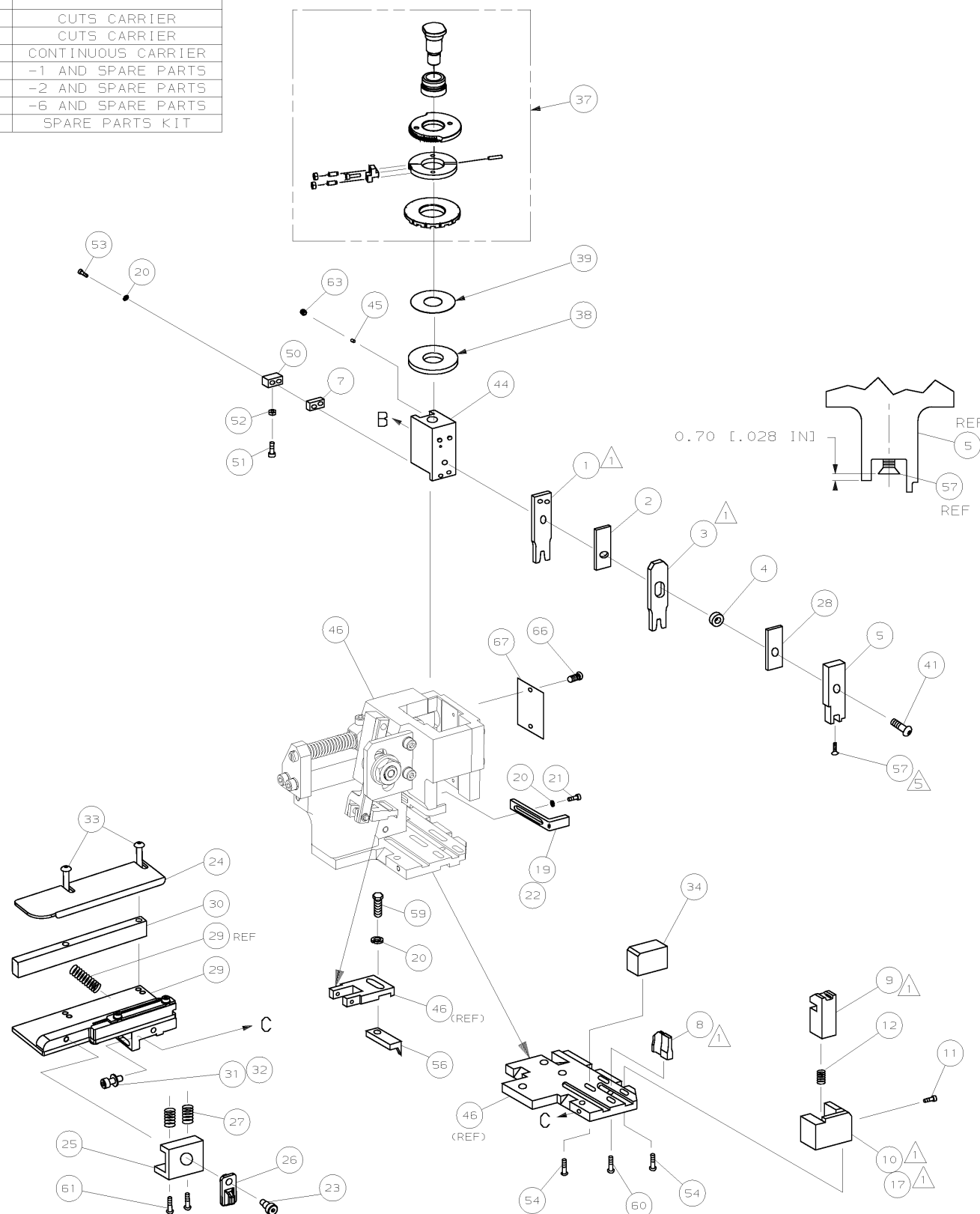
FOR REPLACEMENT PARTS FOR APPLICATOR 1528416
REFER TO ADDITIONAL PAGE(S). SPARE PARTS KIT (IF LISTED)
WILL REMAIN AVAILABLE.

THE REPLACEMENT OCEAN STYLE APPLICATOR HAS THE
SAME TERMINATOR/PRESS INTERFACE AS APPLICATOR
1528416

THIS DRAWING IS A CONTROLLED DOCUMENT.		DWN GOPALAKRISHNA HV		 TE Connectivity	
DIMENSIONS:		CHK RAGHAVENDRA			
		APVD RAGHAVENDRA		NAME FINE ADJ SIDE FD HD-I APPL	
		PRODUCT SPEC		SIZE A3	
		APPLICATION SPEC		CAGE CODE	
MATERIAL		WEIGHT		DRAWING NO C- 1528416	
FINISH		CUSTOMER DRAWING		RESTRICTED TO	
		SCALE		SHEET 1 OF 2 REV B1	

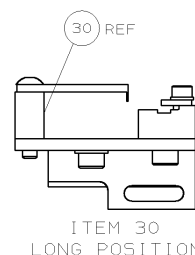


1. RECOMMENDED SPARE PARTS.
2. GREASE RAM, CAM, CAM FOLLOWER AND FEED ROD LIGHTLY.
3. LUBRICATE DAILY PER THE APPLICATOR INSTRUCTION SHEET SUPPLIED WITH THE APPLICATOR.
4. THIS APPLICATOR APPLIES TERMINAL WITH A SEAL. INSULATION RANGE IS DEPENDENT ON SEAL BEING USED.
5. APPLY TORQ-SEAL IN ALLEN SOCKET TO FILL HOLE AFTER FLAT HD HAS BEEN ADJUSTED TO CORRECT HEIGHT AT QUALIFICATION. APPLY #1-23419-5 LOC-TITE TO THREADS.



* WARNING :

ON INSTALLATION, SET WIRE
DISC TO LARGEST WIRE SIZE
SETTING. USE OF SETTINGS
BELOW MIN REQUIRED CRIMP
HEIGHT SETTING WILL CAUSE
DAMAGE TO CRIMP TOOLING.



-	1	1	1	1	1	1	1528416	PRINT, APPLICATOR LOG SHEET	72
-	1	1	1	1	1	1	1338705-3	DOCUMENTATION PACKAGE	71
									70
									69
-	1	1	1	1	1	1	461264-5	PLATE, IDENTIFICATION	68
-	2	2	2	2	2	2	21017-2	SCR,DRIVE (#2x.19) ID PLATE	67
									66
									65
									64
-	1	1	1	1	1	1	3-18031-0	SCR,SKT SET (M6X6) RAM	63
									62
-	2	2	2	2	2	2	1-18024-5	SCR,BHC (M5X25) DRAG	61
-	1	1	1	1	1	1	18024-7	SCR,BHC (M4X10) ANVIL	60
-	1	1	1	1	1	1	5-18022-2	SCR,HEX (M4X8) FEED FINGER	59
									58
-	1	1	1	1	1	1	985575-3	SCR,FHC (M3X10) DEP	57
-	1	1	1	1	1	1	1338685-1	PAWL, FEED	56
									55
-	4	4	4	4	4	4	18024-8	SCR,BHC (M4x12) SHEAR HOLDER	54
-	2	2	2	2	2	2	9-18023-6	SCR,SHC (M4x14) TERM HLD DWN	53
-	1	1	1	1	1	1	18030-1	NUT,HEX (M3) HOLD DOWN	52
-	1	1	1	1	1	1	811242-5	BUMPER, HOLDDOWN	51
-	1	1	1	1	1	1	690753-2	SPACER, TONKER	50
-	1	1	1	1	1	1	18024-3	SCR,BHC (M3X10) CAM	49
-	-	1	-	-	1	-	1338675-1	CAM, PRE FEED 30 & 40 mm ST	48
-	1	-	1	1	-	1	1338676-1	CAM, POST FEED 30 & 40 mm ST	47
-	1	1	1	1	1	1	1320999-3	APPLICATOR BASIC SUBASSY	46
-	1	1	1	1	1	1	690191-1	PLUG, NYLON	45
-	1	1	1	1	1	1	1338660-1	RAM	44
									43
									42
-	1	1	1	1	1	1	2-18024-6	SCR,BHC (M8X25) RAM	41
									40
-	1	1	1	1	1	1	690125-1	SHIM SUBASSY	39
-	1	1	1	1	1	1	469367-1	SPACER, FINE ADJUST	38
-	1	1	1	1	1	1	879103-3	FINE ADJUST HEAD SUBASSY	37
									36
									35
-	1	1	1	1	1	1	1320934-1	SUPPORT, TERMINAL	34
-	2	2	2	2	2	2	1-18024-0	SCR,BHC (M4X20) STRIP GUIDE	33
-	1	1	1	1	1	1	18027-2	WASHER, FLAT (M4)	32
-	1	1	1	1	1	1	1-18023-2	SCR,SKT CAP (M4X12) MOUNT BLOCK	31
-	1	1	1	1	1	1	1320908-2	SPACER, STRIP GUIDE	30
-	1	1	1	1	1	1	1633073-1	STRIP GUIDE PLATE ASSY	29
-	1	1	1	1	1	1	1-455888-6	SPACER, FRONT SHEAR DEP	28
-	2	2	2	2	2	2	1-22284-0	SPRING, DRAG	27
-	1	1	1	1	1	1	356835-1	LEVER, DRAG RELEASE	26
-	1	1	1	1	1	1	240792-1	DRAG, TERMINAL	25
-	1	1	1	1	1	1	1320928-1	PLATE, STRIP GUIDE	24
-	1	1	1	1	1	1	980371-4	SCR,SHC SHLD	23
-	1	-	1	1	-	1	690472-2	STRIPPER	22
-	1	1	1	1	1	1	1-18023-1	SCR,SHC (M4X10) STRIPPER	21
-	4	4	4	4	4	4	18025-2	WASHER, LOCK (M4) STRIPPER	20
-	-	1	-	-	1	-	690472-1	STRIPPER	19
									18
-	1	-	-	1	-	-	1338684-2	HOLDER, SHEAR, FRONT (NO-CUT)	17
									16
									15
									14
									13
-	1	1	1	1	1	1	5-22280-0	SPRING, SHEAR	12
-	1	1	1	1	1	1	356885-5	STOP, SHEAR	11
-	-	1	1	-	1	1	1-1320921-0	HOLDER, SHEAR, FRONT (CUT)	10
-	1	1	1	1	1	1	1318707-1	SHEAR, FLOAT (FRONT)	9
1	2	2	2	1	1	1	1333205-9	ANVIL	8
-	1	1	1	1	1	1	3-240641-7	SPACER, DEPRESSOR (REAR)	7
									6
-	1	1	1	1	1	1	1338680-2	DEPRESSOR, SHEAR (FRONT)	5
-	1	1	1	1	1	1	2-238011-2	SPACER, BLOCK CRIMPER	4
1	2	2	2	1	1	1	318712-8	CRIMPER, INSULATION	3
-	1	1	1	1	1	1	455888-9	SPACER, CRIMPER	2
1	2	2	2	1	1	1	3-456406-3	CRIMPER, WIRE	1
-77	-76	-72	-71	-6	-2	-1	PART NO	DESCRIPTION	ITEM NO
							← REVISION OF EACH ASSY NO (WHEN BLANK, USE DWG REVISION)		
QTY REQD PER ASSY							PARTS LIST		
		DIMENSIONS: mm [INCHES] DO NOT SCALE PRINT. TOLERANCES UNLESS OTHERWISE SPECIFIED: 1 PLC DEC ±0.5 (1.02 IN) 2 PLC DEC ±- 3 PLC DEC ±- ANGLES ±- SURF TEXTURE: ✓ REMOVE BURRS, BREAK SHARP EDGES R0.38 MAX					MATL	HT TR	FIN
							DR M. CLIFFORD CHK -	21APR04 APP F. BACKHURST REL 25-05-04 M. CLIFFORD	AMP Incorporated Harrisburg, PA 17105-3608
4	MC JUL04	NAME FINE ADJ SIDE FD HD-I APPL					MACHINE REF HD-I APPL		
4	MC MAY04	SCALE - [D] DWG NO 1528416					SHEET 1 OF 1 REV B		
APP	DATE	CASE CODE 00779 CUSTOMER AND ASSEMBLY DRAWING							RESTRICTED TO -

Mouser Electronics

Authorized Distributor

Click to View Pricing, Inventory, Delivery & Lifecycle Information:

[TE Connectivity:](#)

[1528416-2](#)