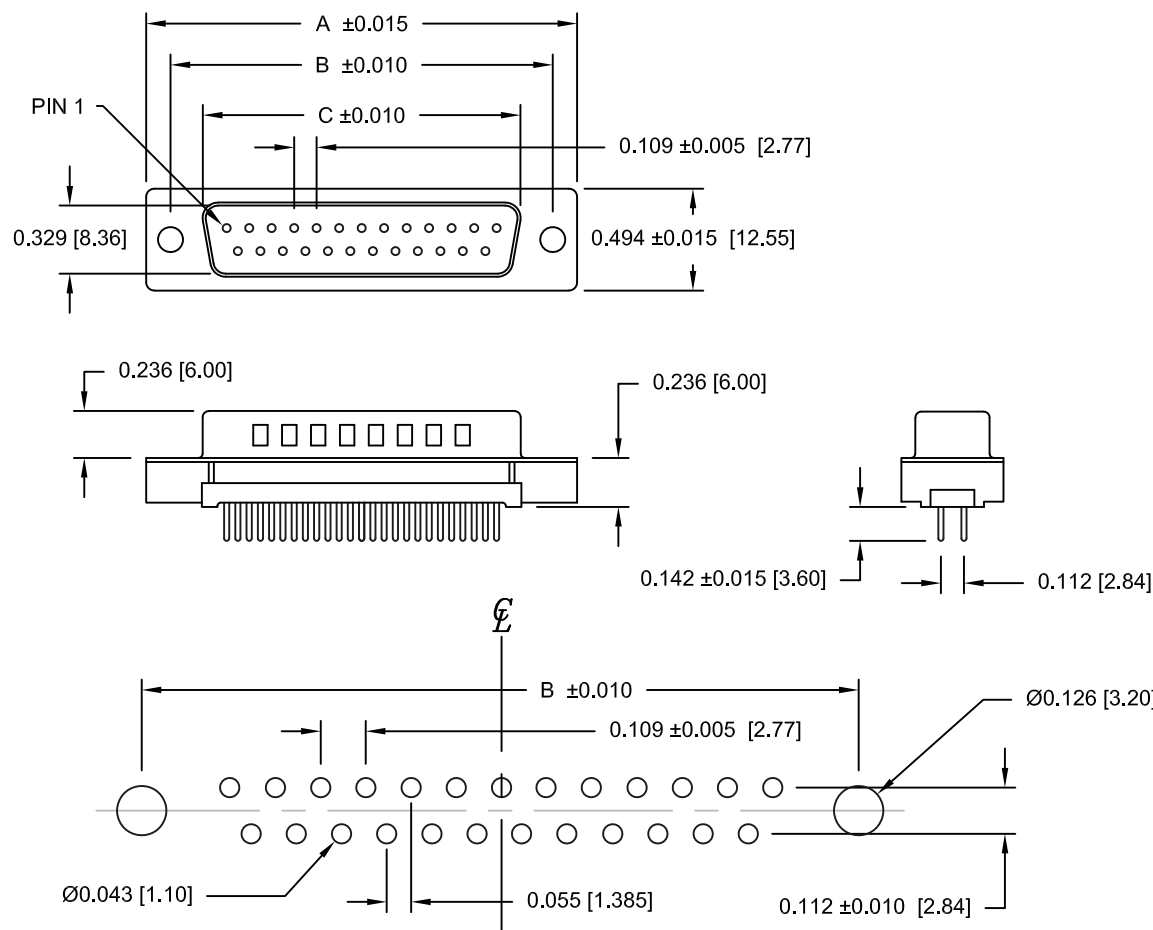


DESCRIPTION: VERTICAL MOUNT - MALE - LOW PORFILE - PLASTIC BACK



RECOMMENDED PCB LAYOUT

NUMBER OF CONTACTS	"A" Inch (mm)	"B" Inch (mm)	"C" Inch (mm)
9	1.213 (30.81)	.984 (24.99)	.666 (16.92)
15	1.543 (39.19)	1.312 (33.32)	.994 (25.25)
25	2.088 (53.04)	1.852 (47.04)	1.534 (38.96)
37	2.729 (69.32)	2.500 (63.50)	2.182 (55.42)

RoHS COMPLIANT

## MATERIAL:

INSULATOR: THERMOPLASTIC POLYESTER, UL94-0, CHEMICAL RESISTANCE, BLACK, 230°C PROCESS TEMP.  
SHELL: STEEL, NICKEL PLATED  
CONTACT: BRASS; GOLD FLASH OR 30 MICRO-INCH IN MATING AREA, TIN PLATED ON TAIL ENDS

## ELECTRICAL:


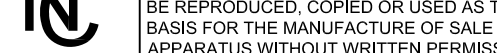
CURRENT RATING: 3 AMPS  
WITHSTANDING VOLTAGE: 250 VAC (RMS) MAX  
INSULATION RESISTANCE: 5,000 MOhms Min.  
CONTACT RESISTANCE: 25 mOhms Max.  
WORKING TEMPERATURE: -55° TO +85°C

**191-YYY-113LYYY**

SERIES \_\_\_\_\_  
POSITIONS \_\_\_\_\_  
009  
015  
025  
037  
GENDER \_\_\_\_\_  
1 = MALE  
TERMINATION \_\_\_\_\_  
1 = SOLDER TAIL  
SHELL PLATING \_\_\_\_\_  
3 = STEEL, NICKEL PLATED  
RoHS COMPLIANT (LOW TEMP. PROCESS)  
HARDWARE OPTIONS \_\_\_\_\_  
00 = NO HARDWARE, 0.125 DIA. HOLE  
55 = 4-40 INSERT  
56 = 4-40 INSERT WITH BOARD LOCK  
57 = 4-40 STANDOFF WITH BOARD LOCK  
59 = 4-40 STANDOFF  
PLATING OPTIONS \_\_\_\_\_  
1 = GOLD FLASH  
2 = 30 MICRO-INCH GOLD

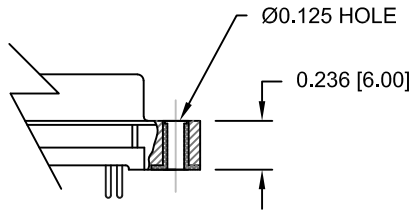
UNITS = INCHES [MM]

DO NOT SCALE FROM DRAWING

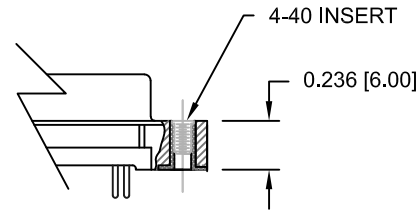
DRAWN: PAM JENKINS		DATE: 8-22-05	
	THESE DRAWINGS AND SPECIFICATIONS ARE THE PROPERTY OF NorComp AND SHALL NOT BE REPRODUCED, COPIED OR USED AS THE BASIS FOR THE MANUFACTURE OF SALE OF APPARATUS WITHOUT WRITTEN PERMISSION.		
		SCALE: NTS	SHEET 1 OF 2
		REV 5	
		DWG NO. 191-YYY-113LYYY	

DESCRIPTION: 191 SERIES HARDWARE OPTIONS

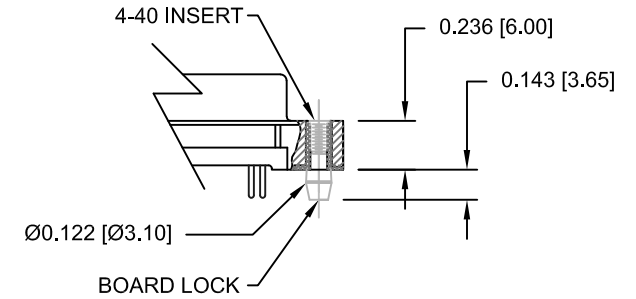
00 = .125 DIA. HOLE



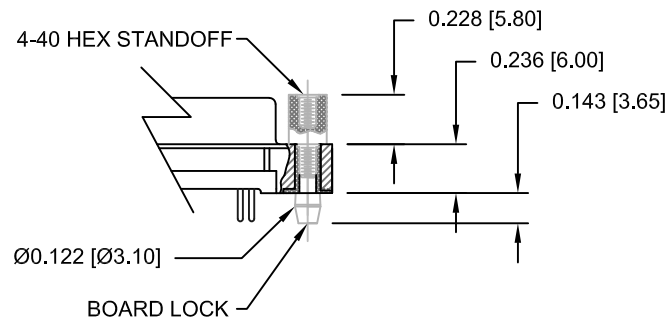
55 = 4-40 INSERT



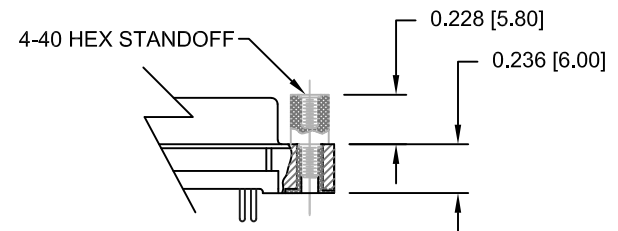
56 = 4-40 INSERT WITH BOARD LOCK



57 = 4-40 STANDOFF WITH BOARD LOCKS



59 = 4-40 STANDOFF



DO NOT SCALE FROM DRAWING

RoHS COMPLIANT



THESE DRAWINGS AND SPECIFICATIONS ARE THE PROPERTY OF NorComp AND SHALL NOT BE REPRODUCED, COPIED OR USED AS THE BASIS FOR THE MANUFACTURE OF SALE OF APPARATUS WITHOUT WRITTEN PERMISSION.

**NorComp**

DRAWN: <b>PAM JENKINS</b>		DATE: <b>8-22-05</b>	
SCALE: <b>NTS</b>		SHEET <b>2</b> OF <b>2</b>	
DWG NO. <b>191-YYY-113LYYY</b>		REV <b>5</b>	

# Mouser Electronics

Authorized Distributor

Click to View Pricing, Inventory, Delivery & Lifecycle Information:

NorComp:

[191-009-113L001](#) [191-009-113L571](#) [191-015-113L001](#) [191-025-113L001](#) [191-009-213-571](#)