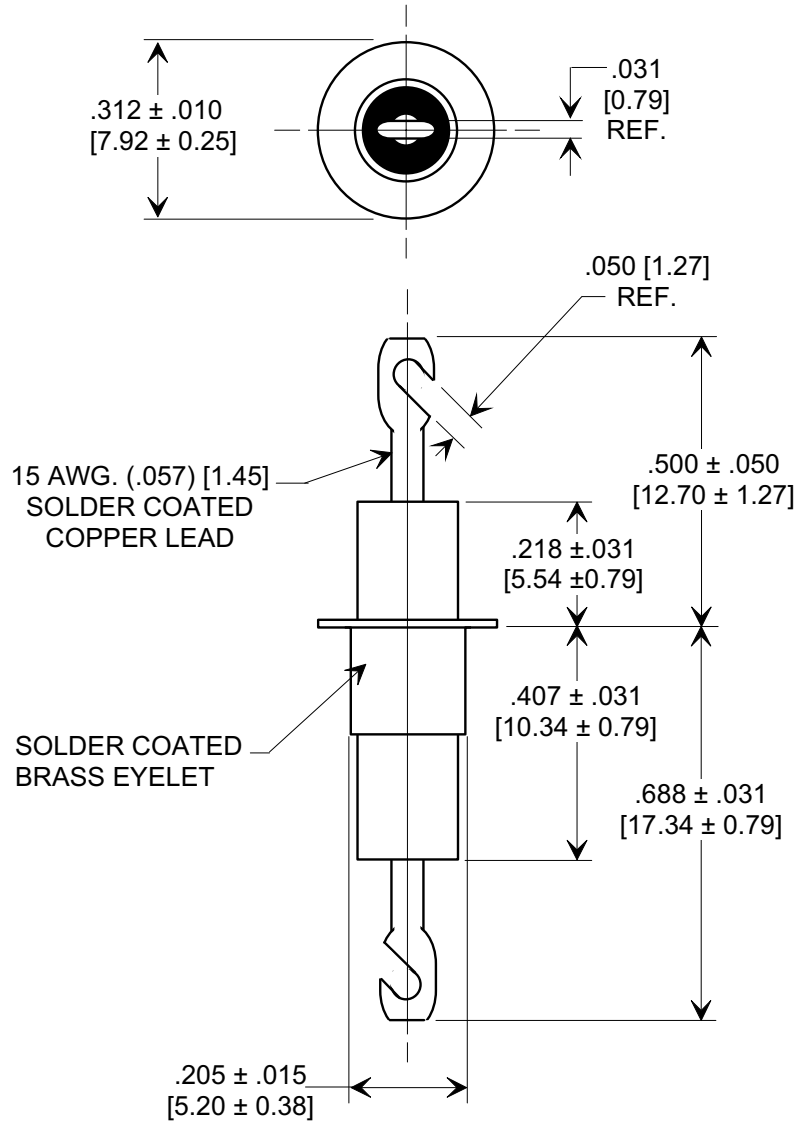
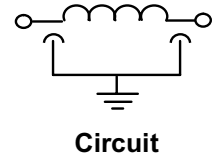
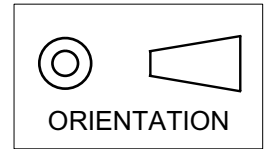


MARKETING SALES DRAWING
DIMENSIONS IN INCHES - DO NOT SCALE THIS DRAWING
DIMENSIONS IN METRIC - []

Electrical Testing
per Tusonix standard
test plans and Mil-Std-202
Test Methods.



MIN. CAP (pF)	WORKING VOLTAGE (WVDC)		CURRENT Idc	I.R. MIN. @ 100 (VDC)	DWV	MINIMUM NO-LOAD INSERTION LOSS			
	85°C	125°C				10 MHz	100 MHz	1 GHz	10 GHz
4500	1000	500	25A	10 G Ω	1500 VDC	8	50	70	70

X-2015 Rev-0 REVISION RECORD	Original Release C.O. 20031201-5-01	DIM'S REV'D .500 ± .050 WAS ± .031 & [5.20] WAS [5.21], TOL'S ± .031 DELETED L.E. 02-19-04 20040219-3-01	1	--TOLERANCES-- Unless Otherwise Specified	Title EYELET STYLE EMI FILTER	
	DECIMAL ± // //			Drawn S.M. 12-01-03	Scale 3 X	
	ANGLES ± // //			Approved T.C. 12-01-03		
	TUSONIX TUCSON, ARIZONA			A	4106-001	

Mouser Electronics

Authorized Distributor

Click to View Pricing, Inventory, Delivery & Lifecycle Information:

[Tusonix:](#)

[4106-001LF](#)