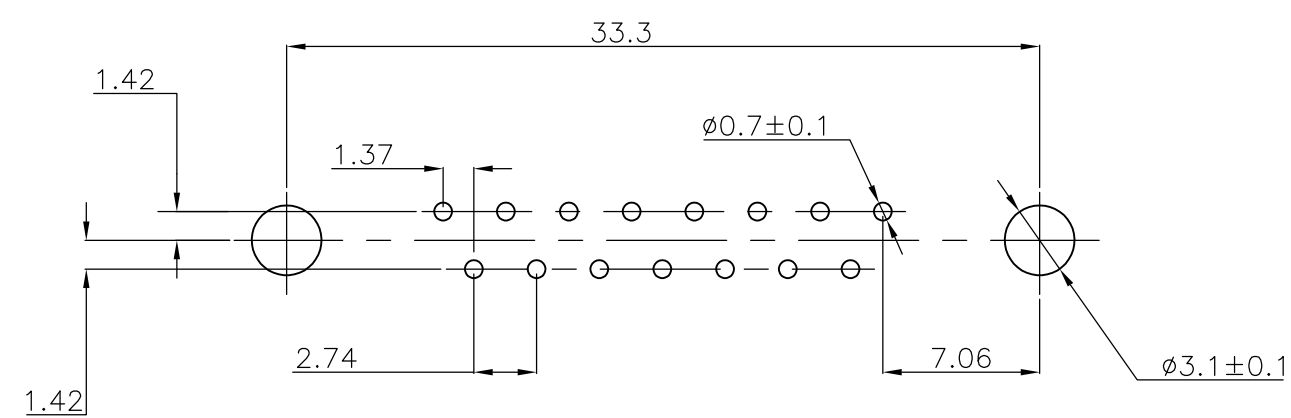




## RECOMMENDED P.C. BOARD HOLE-LAYOUT

[illegible]

- 1 GROOVE INDICATES VERSION WITH 4-40 UNC INNER THREAD;  
WITHOUT GROOVE INDICATES VERSION WITH M3 INNER THREAD.
- 2 CAVITY IDENTIFICATION AT FRONT SIDE ONLY.
- 3 PART NUMBER AND DATE CODE.
4. WHEN BOARDLOCKS ARE USED, CONNECTOR CAN BE USED FOR PCB  
THICKNESS OF 1.6 ONLY.
5. SHELL HAS 2x4 GROUNDING SPRINGS; PITCH IS 3.6.
6. AIR AND CREEPAGE DISTANCES ACCORDING TO DIN 41652.
7. CONTACT FINISH: GOLD FLASH OVER PALLADIUM-NICKEL PLATE OR  
GOLD PLATE ON THE MATING SURFACES, TIN PLATE ON THE  
SOLDER-TAILS, NICKEL UNDERPLATE ON THE ENTIRE CONTACT.  
MATING SURFACE FINISH MEETS LEVEL 2 PER DIM 41652.
- 8 4-40/M3 THREAD DEPTH

ITEM NO/MATERIAL:

- |                    |  |
|--------------------|--|
| ① SHELL            | : BRIGHT TIN PLATED STEEL  |
| ② HOUSING          | : GLASS FILLED POLYESTER,<br>COLOR : BLACK                               |
| ③ CONTACTS         | : PHOSPHOR BRONZE<br>(PLATING : SEE NOTES)                               |
| ④ FEMALE SCREWLOCK | : TIN PLATED STEEL<br>(INNER THREAD 4-40 UNC OR M3)                      |
| ⑤ BUSHING          | : TIN PLATED STEEL (INNER THREAD 4-40<br>UNC OR M3 OR Ø3.1 THROUGH HOLE) |
| ⑥ BOARDLOCK        | : TIN PLATED PHOSPHOR BRONZE   |
| ⑦ STAND-OFF        | : GLASS FILLED NYLON<br>COLOR : BLACK                                    |

THIS DRAWING IS A CONTROLLED DOCUMENT. DIMENSIONING AND TOLERANCING PER ASME Y14.5M-2009			DWN J.V. LIEMPT 03JUL97 CHK C. SOUSA 09SEP97 APVD W. SOOMERS 09SEP97		 TE Connectivity		
DIMENSIONS: mm 		TOLERANCES UNLESS OTHERWISE SPECIFIED: 0 PLC ± - 1 PLC ± 0.3 2 PLC ± 0.15 3 PLC ± - 4 PLC ± - ANGLES ± -		NAME HDP-20 SIZE 2 VERTICAL+ PLUG HEADER WITH SOLDER CONTACTS			
MATERIAL -		FINISH -					
CUSTOMER DRAWING				SIZE A2	CAGE CODE 00779	DRAWING NO C-338310	RESTRICTED TO -
				SCALE NTS	SHEET 1 of 1	REV H	

# Mouser Electronics

Authorized Distributor

Click to View Pricing, Inventory, Delivery & Lifecycle Information:

[TE Connectivity:](#)

[2-338310-2](#)