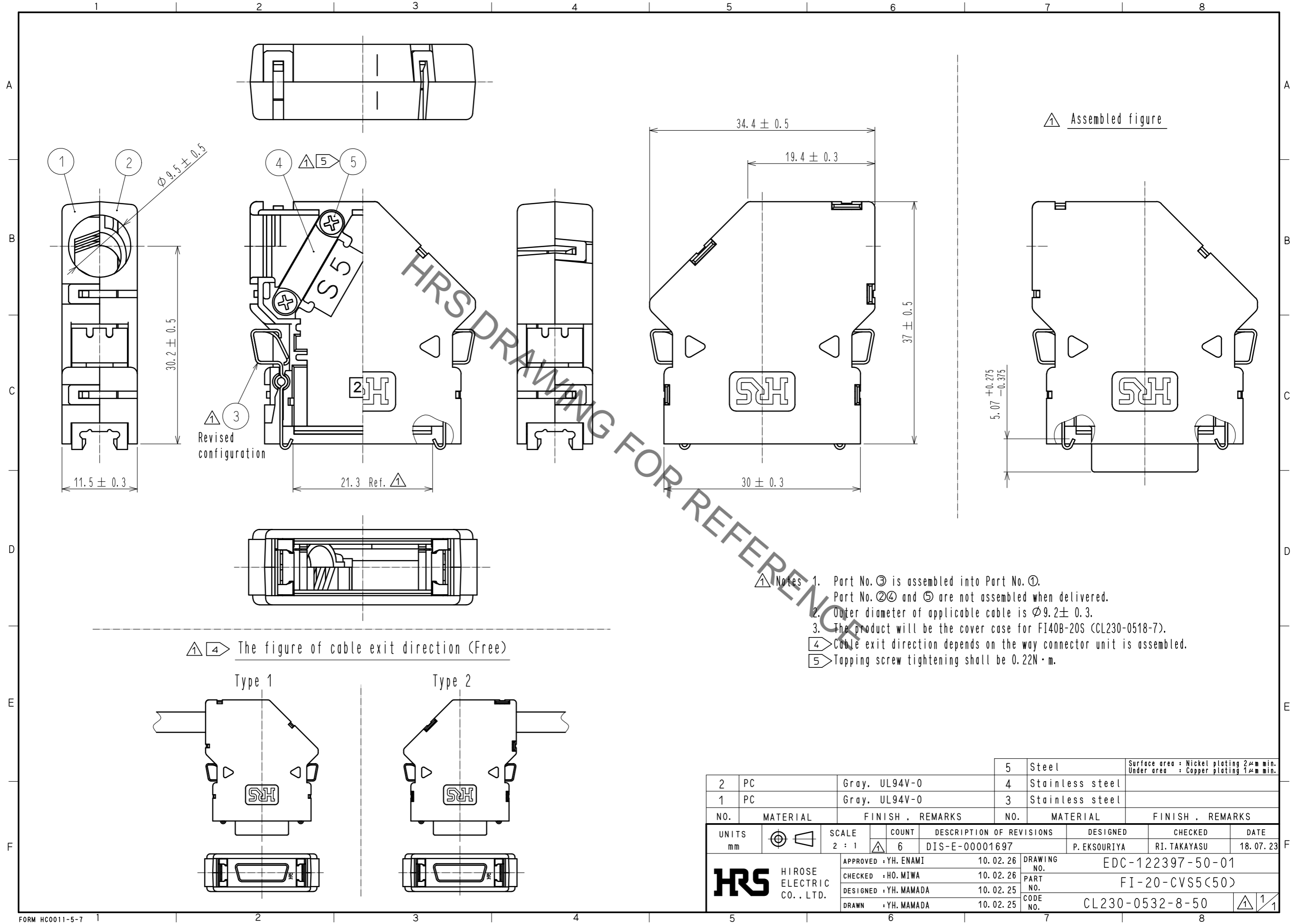
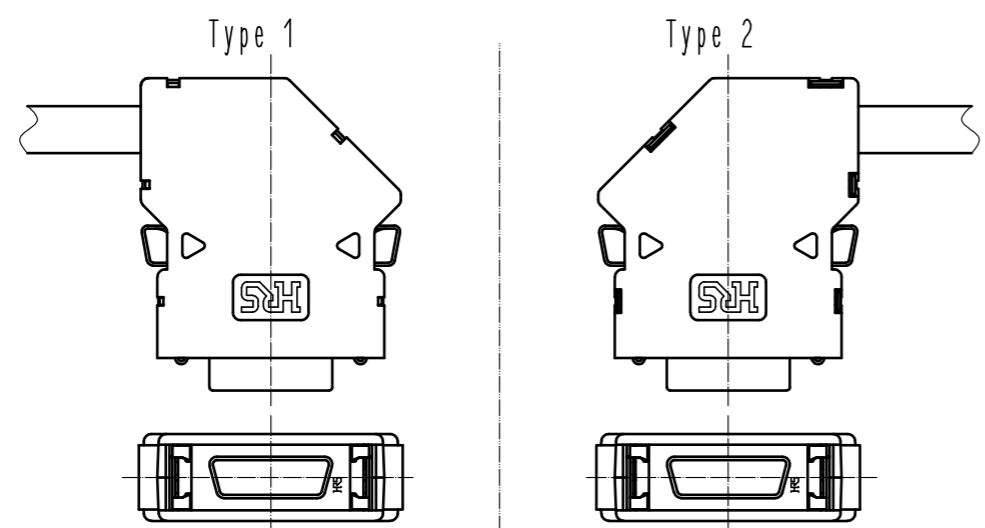


Apr.1.2019 Copyright 2019 HIROSE ELECTRIC CO., LTD. All Rights Reserved.  
 In case of consideration for using Automotive equipment / device which demand high reliability, kindly contact our sales window correspondents.



④ The figure of cable exit direction (Free)



- Notes
1. Part No. ③ is assembled into Part No. ①.
  2. Part No. ②④ and ⑤ are not assembled when delivered.
  3. Outer diameter of applicable cable is  $\phi 9.2 \pm 0.3$ .
  3. The product will be the cover case for FI40B-20S (CL230-0518-7).
  - ④ Cable exit direction depends on the way connector unit is assembled.
  - ⑤ Tapping screw tightening shall be 0.22N·m.

2	PC	Gray, UL94V-0	5	Steel	Surface area : Nickel plating 2μm min. Under area : Copper plating 1μm min.
1	PC	Gray, UL94V-0	4	Stainless steel	
			3	Stainless steel	
NO.	MATERIAL	FINISH . REMARKS	NO.	MATERIAL	FINISH . REMARKS
UNITS	mm	SCALE	2 : 1	COUNT	6
DESCRIPTION OF REVISIONS			DESIGNED	CHECKED	DATE
DIS-E-00001697			P. EKSOURIYA	RI. TAKAYASU	18. 07. 23
APPROVED : YH. ENAMI			10. 02. 26	DRAWING NO. EDC-122397-50-01	
CHECKED : HO. MIWA			10. 02. 26	PART NO. FI-20-CVS5(50)	
DESIGNED : YH. MAMADA			10. 02. 25	CODE NO. CL230-0532-8-50	
DRAWN : YH. MAMADA			10. 02. 25	①/1	