

DO NOT  
SCALE FROM  
THIS PRINT

TABLE 1			
ITEM	COMPONENT	-H	-HN
1	SUB ASSEMBLY	SUB-MCX-P-C-H-RA-CA1	SUB-MCX-P-C-HN-RA-CA1
2	CAP	MCX-CAP-001-F	MCX-CAP-001-N
3	FERRULE	MCX-FER-002-F	MCX-FER-002-N
4	INSULATOR	MCX-INS-001	MCX-INS-001

GENDER  
-P: PLUG

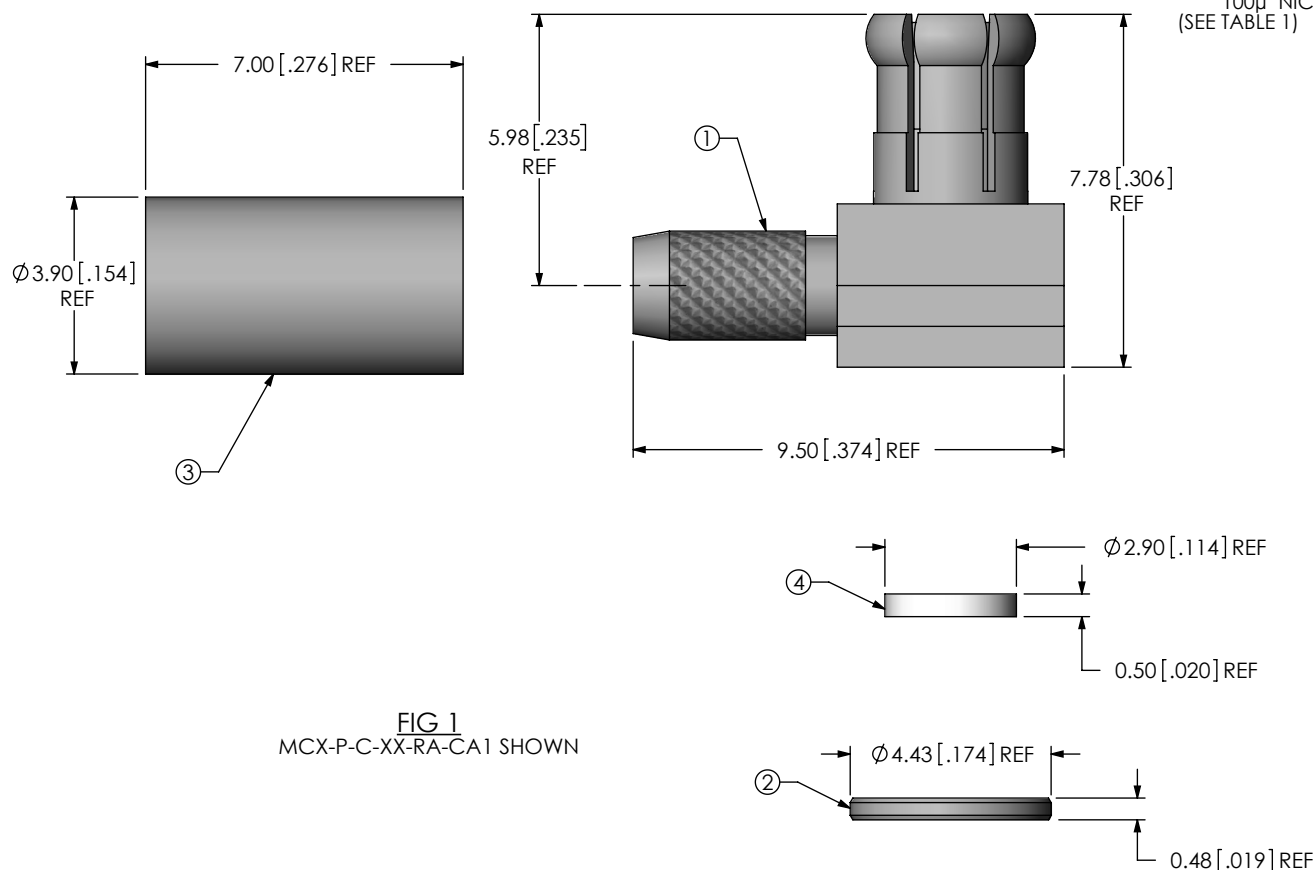
TYPE  
-C: CABLE

TERMINATION  
-CA1: CABLE  
(RG174 OR RG316)

ORIENTATION  
-RA: RIGHT ANGLE

**PLATING SPECIFICATION**

-H: 30μ" GOLD CENTER CONTACT,  
3μ" GOLD OUTER CONTACT  
-HN: 30μ" GOLD CENTER CONTACT,  
100μ" NICKEL OUTER CONTACT  
(SEE TABLE 1)



**FIG 1**  
MCX-P-C-XX-RA-CA1 SHOWN

**NOTES:**

1. REPRESENTS A CRITICAL DIMENSION.
2. CENTER CONTACT PUSHOUT FORCE: 26.69 N [6LB] MIN
3. NOTE DELETED.
4. NOTE DELETED.
5. PRODUCT TO BE PACKAGED PER PACKAGING STANDARD CO-RF-WI-3040-M.
6. NOTE DELETED.
7. NOTE DELETED.
8. NOTE DELETED.

F:\DWG\MISC\MKTG\MCX-P-C-XX-RA-CA1-MKT.SLDDRW

UNLESS OTHERWISE SPECIFIED, DIMENSIONS ARE IN MILLIMETERS [INCHES]. TOLERANCES ARE:		* PROPRIETARY NOTE *	
DECIMALS	ANGLES	THIS DOCUMENT CONTAINS CONFIDENTIAL AND PROPRIETARY INFORMATION AND ALL DESIGN, MANUFACTURING, REPRODUCTION, USE, PATENT RIGHTS AND SALES RIGHTS ARE EXPRESSLY RESERVED BY SAMTEC, INC. THIS DOCUMENT SHALL NOT BE DISCLOSED, IN WHOLE OR PART, TO ANY UNAUTHORIZED PERSON OR ENTITY NOR REPRODUCED, TRANSFERRED OR INCORPORATED IN ANY OTHER PROJECT IN ANY MANNER WITHOUT THE EXPRESS WRITTEN CONSENT OF SAMTEC, INC.	
.X: ±0.3 [.01]	5 °		
.XX: ±0.13 [.005]			
.XXX: ±0.051 [.0020]			
<b>MATERIAL:</b>		DO NOT SCALE DRAWING SHEET SCALE: 1:0.166667	
SHELL, FERRULE, CAP: BRASS			
PIN: BRASS			
INSULATOR: PTFE			

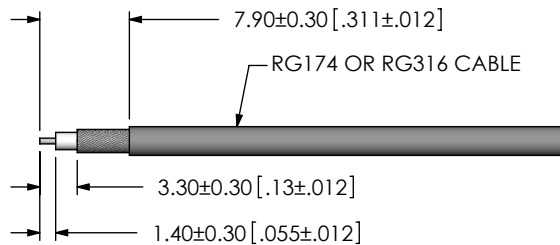
**samtec**

520 PARK EAST BLVD, NEW ALBANY, IN 47150  
PHONE: 812-944-6733 FAX: 812-948-5047  
e-Mail info@SAMTEC.com code 55322

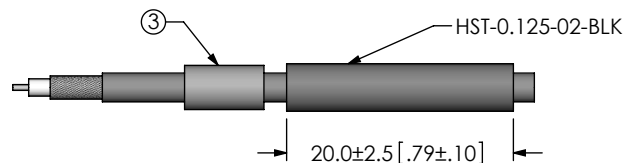
DESCRIPTION:  
MCX RIGHT ANGLE CABLE PLUG, RG174 & RG316- 50 OHM

DWG. NO.  
**MCX-P-C-XX-RA-CA1**

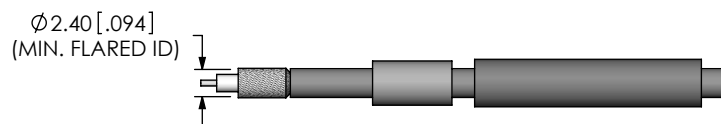
BY: R MUSSER 02/06/2008 SHEET 1 OF 2



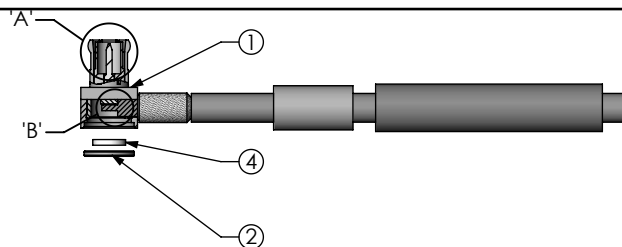
IN-PROCESS 1  
STRIP AND TIN INNER CONDUCTOR



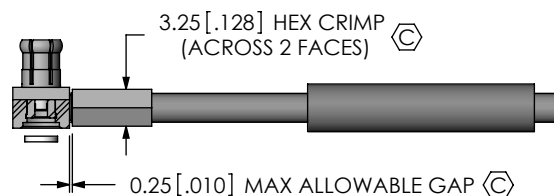
IN-PROCESS 2  
ADD HEAT SHRINK TUBE AND FERRULE



IN-PROCESS 3  
FLARE SHIELD



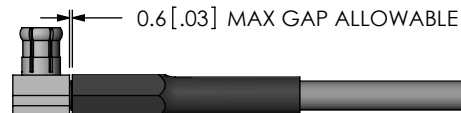
IN-PROCESS 4  
ADD SUB-MCX-P-C-XX-RA-CA1



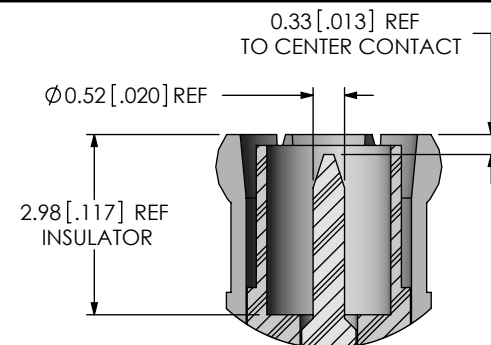
IN-PROCESS 5  
CRIMP FERRULE AND SOLDER SIGNAL PIN  
(USE RF CRIMP HAND TOOL  
# CAT-HT-126667-21 OR EQUIVALENT)



IN-PROCESS 6  
INSERT INSULATOR AND CAP



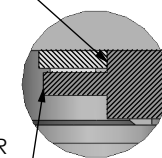
IN-PROCESS 7  
APPLY HEAT SHRINK TUBING



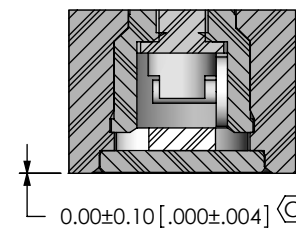
DETAIL 'A'  
SCALE 8 : 1

END OF CABLE DIELECTRIC  
SHOULD SEAT AGAINST  
CONTACT CUP

CABLE CENTER CONDUCTOR  
SHOULD NOT PROTRUDE  
OUTSIDE CONTACT CUP  
AFTER FERRULER IS CRIMPED



DETAIL 'B'  
SCALE 6 : 1



DETAIL 'E'  
SCALE 6 : 1

\* PROPRIETARY NOTE \*

THIS DOCUMENT CONTAINS CONFIDENTIAL AND PROPRIETARY INFORMATION AND ALL DESIGN, MANUFACTURING, REPRODUCTION, USE, PATENT RIGHTS AND SALES RIGHTS ARE EXPRESSLY RESERVED BY SAMTEC, INC. THIS DOCUMENT SHALL NOT BE DISCLOSED, IN WHOLE OR PART, TO ANY UNAUTHORIZED PERSON OR ENTITY NOR REPRODUCED, TRANSFERRED OR INCORPORATED IN ANY OTHER PROJECT IN ANY MANNER WITHOUT THE EXPRESS WRITTEN CONSENT OF SAMTEC, INC.

DO NOT SCALE DRAWING  
SHEET SCALE: 1:0.66667

**samtec**

520 PARK EAST BLVD, NEW ALBANY, IN 47150  
PHONE: 812-944-6733 FAX: 812-948-5047  
e-Mail info@SAMTEC.com code 55322

DESCRIPTION:  
MCX RIGHT ANGLE CABLE PLUG, RG174 & RG316- 50 OHM

DWG. NO.  
**MCX-P-C-XX-RA-CA1**

BY: R MUSSER 02/06/2008 SHEET 2 OF 2