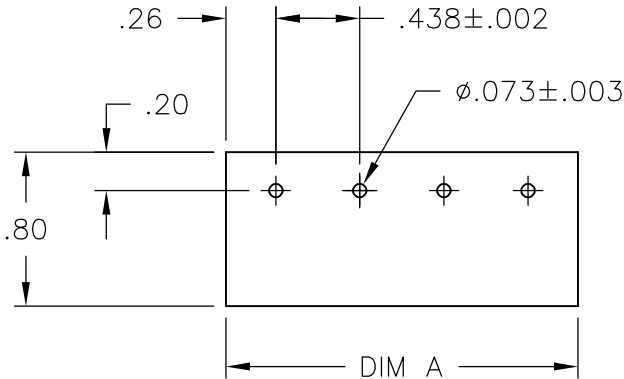
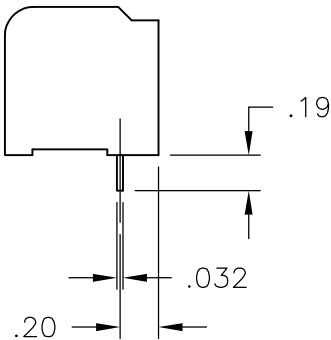
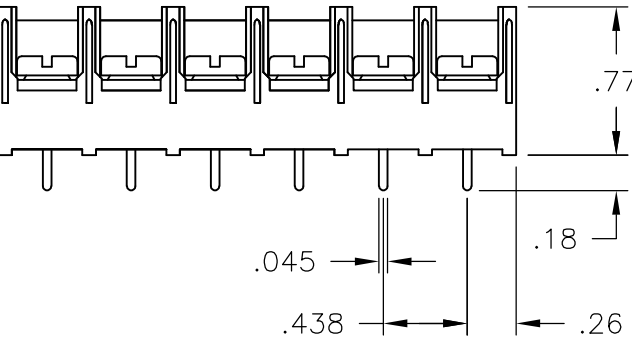
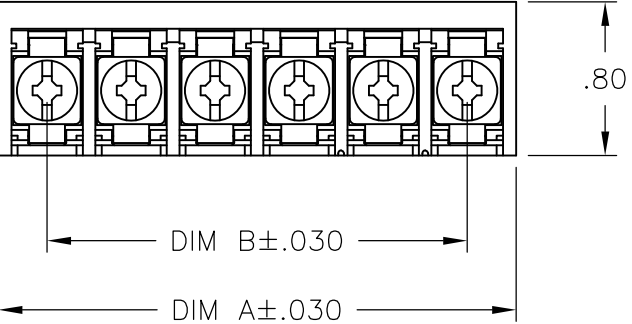


LOC —	DIST —	REVISIONS					
		P	LTR	DESCRIPTION	DATE	DWN	APVD
			K4	REVISED PER ECO—11—004587	11MAR11	RK	HMR



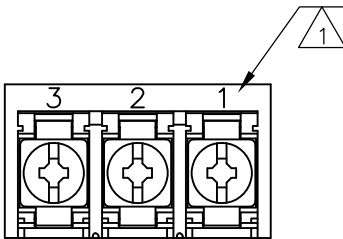
RECOMMENDED PCB LAYOUT

MATERIALS:
HOUSING: THERMOPLASTIC, UL94V-0, BLACK.
TERMINAL: BRIGHT TIN PLATED COPPER ALLOY.
SCREWS: 8-32 ZINC PLATED STEEL.

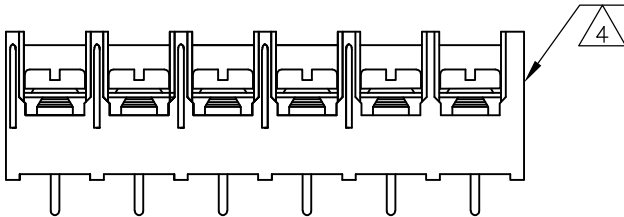
ELECTRICAL:
CURRENT RATING: 30A
VOLTAGE RATING: 600V
WIRE RANGE: 10-18 AWG (UL)
10-22 AWG (CSA)

MECHANICAL:
RECOMMENDED TORQUE: 20 IN-LB
OPERATING TEMP.: -40°C TO +120°C.

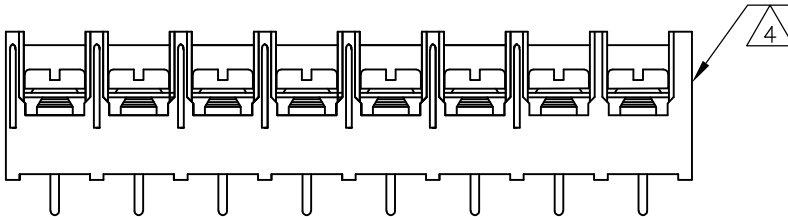
- 1 MARK WITH WHITE INK.
- 2 M4 THREAD IN TERMINAL, NO SCREWS INCLUDED.
- 3 ALL SCREWS TO BE BOTTOMED, EXCEPT AS NOTED.
- 4 SCREWS ON THIS ASSEMBLY WIRE READY.



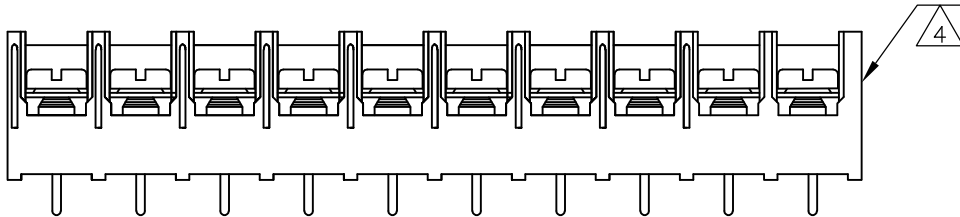
1546728-3



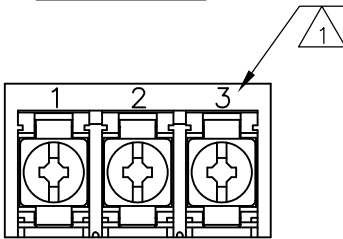
1986650-6



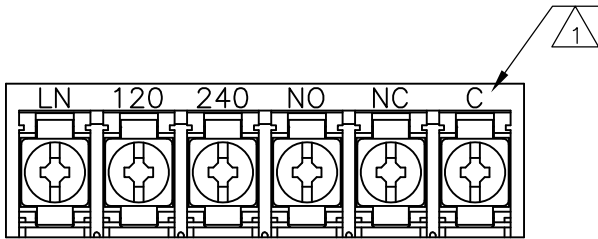
1986650-8



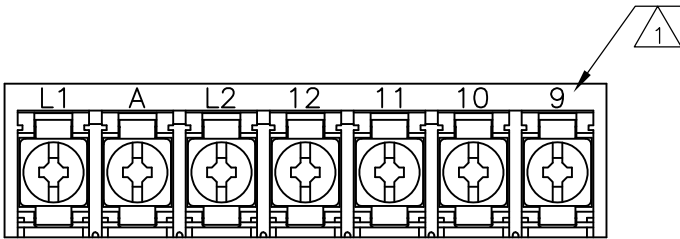
1-1986650-0



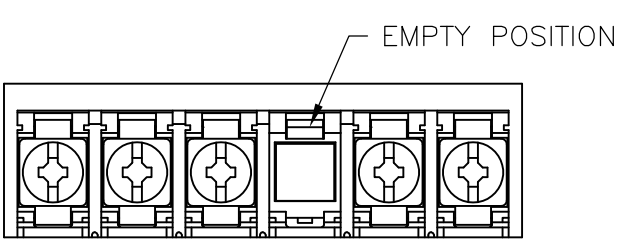
1546137-1



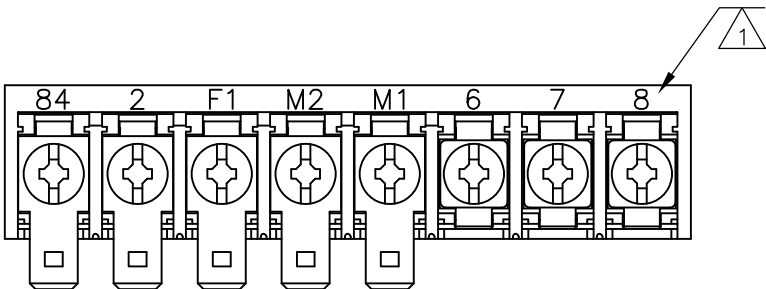
6-1546159-4





6-1546159-7



1546728-1



6-1546159-6

THIS DRAWING IS A CONTROLLED DOCUMENT.		DWN S SCHLEGEL 5/15/03	<div> TE Connectivity</div>				
		CHK S YODER 5/15/03					
DIMENSIONS: INCHES	TOLERANCES UNLESS OTHERWISE SPECIFIED:	APVD S YODER 5/15/03	NAME				
	0 PLC ± -	PRODUCT SPEC	8PCV-XX-006 ASSEMBLY				
	1 PLC ± -	—					
	2 PLC ± .02	APPLICATION SPEC					
	3 PLC ± .010	—					
4 PLC ± -	—	SIZE	CAGE CODE	DRAWING NO	RESTRICTED TO		
MATERIAL	FINISH	WEIGHT	A3	00779	C-6-1437657-3	—	
—	—	CUSTOMER DRAWING			SCALE	SHEET	REV
					NTS	1 OF 2	K4

4

3

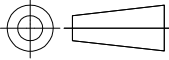

2

1

THIS DRAWING IS UNPUBLISHED.	RELEASED FOR PUBLICATION — , — .
© COPYRIGHT — By — ALL RIGHTS RESERVED.	

LOC	DIST	REVISIONS					
—	—	P	LTR	DESCRIPTION		DATE	APVD
		—	—	SEE SHEET 1		—	—

2	—	.875	1.385	3	—	1546728—5
	—	8.312	8.822	20	8PCV—20—006	8—1546159—2
	—	7.875	8.385	19	8PCV—19—006	1546728—2
	—	7.438	7.948	18	8PCV—18—006	7—1437658—2
	—	7.000	7.510	17	8PCV—17—006	8—1546159—1
	—	6.563	7.073	16	8PCV—16—006	6—1437658—6
	—	6.125	6.635	15	8PCV—15—006	8—1437659—0
	—	5.688	6.198	14	8PCV—14—006	6—1437658—0
	—	5.250	5.760	13	8PCV—13—006	5—1437658—5
	—	4.813	5.323	12	8PCV—12—006	4—1437658—5
	—	4.375	4.885	11	8PCV—11—006	4—1437658—0
	—	3.938	4.448	10	8PCV—10—006	3—1437658—3
	SEE FIGURE	3.938	4.448	10	8PCV—10—050	1—1986650—0
	—	3.500	4.010	9	8PCV—09—006	7—1546159—1
	SEE FIGURE	3.063	3.573	8	8PCV—08—502	6—1546159—9
	—	3.063	3.573	8	8PCV—08—006	2—1437658—1
	SEE FIGURE	3.063	3.573	8	8PCV—08—050	1986650—8
	SEE FIGURE	2.625	3.135	7	8PCV—07—598	6—1546159—7
	—	2.625	3.135	7	8PCV—07—623	1—1437658—6
	—	2.625	3.135	7	8PCV—07—006	1—1437658—1
	SEE FIGURE	2.187	2.697	6	8PCV—06—050	1986650—6
	SEE FIGURE	2.187	2.697	6	8PCV—06—050	1546728—1
	SEE FIGURE	2.187	2.697	6	8PCV—06—538	6—1546159—4
	—	2.187	2.697	6	8PCV—06—006	9—1437657—8
SUPERCEDED BY 8—1437657—8	—	1.750	2.260	5	8PCV—05—637	9—1437657—4
	—	1.750	2.260	5	8PCV—05—006	8—1437657—8
SUPERCEDED BY 8—1437657—0	—	1.312	1.822	4	8PCV—04—636	8—1437657—3
	—	1.312	1.822	4	8PCV—04—006	8—1437657—0
	SEE FIGURE	.875	1.385	3	8PCV—03—662	1546728—3
	SEE FIGURE	.875	1.385	3	8PCV—03—657	1546137—1
	—	.875	1.385	3	8PCV—03—006	6—1437657—9
	—	.437	.947	2	8PCV—02—006	5—1437657—7
	—	.437	.947	2	8PCV—02—634	6—1437657—3
COMMENTS		DIM B	DIM A	NO OF POS	CATALOG NUMBER	PART NO

THIS DRAWING IS A CONTROLLED DOCUMENT.		DWN S SCHLEGEL 5/15/03	 TE Connectivity								
		CHK S YODER 5/15/03					NAME				
		APVD S YODER 5/15/03									
DIMENSIONS: INCHES		TOLERANCES UNLESS OTHERWISE SPECIFIED:		PRODUCT SPEC		8PCV—XX—006 ASSEMBLY					
		0 PLC ± — 1 PLC ± — 2 PLC ± .02 3 PLC ± .010 4 PLC ± — ANGLES ± —		APPLICATION SPEC							
MATERIAL		FINISH		WEIGHT		SIZE	CAGE CODE	DRAWING NO	RESTRICTED TO		
—		—		—		A3	00779	C-6—1437657—3	—		
CUSTOMER DRAWING						SCALE	NTS	SHEET	2 OF 2	REV	K4

Mouser Electronics

Authorized Distributor

Click to View Pricing, Inventory, Delivery & Lifecycle Information:

[TE Connectivity:](#)

[8PCV-13-006](#)