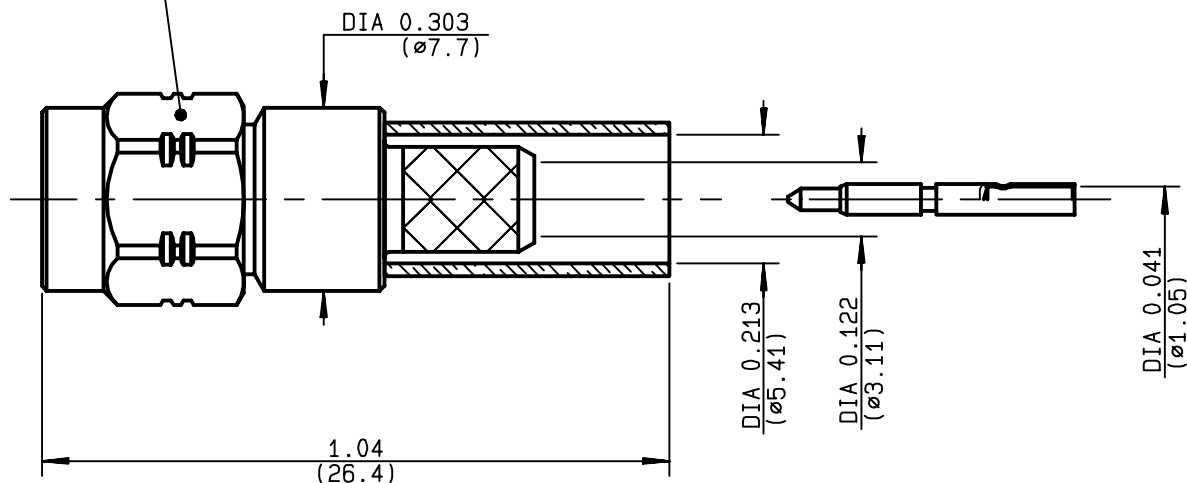


**STRAIGHT PLUG FULL CRIMP-TYPE  
CABLE 5/50 S**
**R124.075.323**  
**SERIES SMA-COM**

 Hex. .315/flats  
 (Hex. 8/plats)


NOMINAL IMPEDANCE	<b>50</b>	$\Omega$
FREQUENCY RANGE	<b>0-12.4</b>	GHz
TEMPERATURE RATING	<b>-65/+165</b>	$^{\circ}\text{C}$
V.S.W.R	<b>1.15 + .01</b>	$\times F(\text{GHz})\text{Maxi}$
RF INSERTION LOSS	<b>0.05</b>	$\sqrt{F}(\text{GHz}) \text{ dB Maxi}$
VOLTAGE RATING	<b>335</b>	$V_{\text{eff}} \text{ Maxi}$
DIELECTRIC WITHSTANDING VOLTAGE	<b>1000</b>	$V_{\text{eff}} \text{ Mini}$
INSULATION RESISTANCE	<b>5000</b>	$M \Omega \text{ Mini}$
HERMETIC SEAL	<b>NA</b>	$\text{Atm.cm}^3/\text{s}$
LEAKAGE (pressurized only)	<b>NA</b>	
MECHANICAL DURABILITY	<b>100</b>	Cycles
WEIGHT	<b>5.2</b>	gr
SPECIFICATION		

 CABLES : **KX 15**  
**RG 141**  
**RG 58**

## OTHERS CHARACTERISTICS

CABLE RETENTION	<b>180</b>	N Mini
CENTER CONTACT RETENTION		
Axial force - mating end	<b>18</b>	N Mini
Axial force - opposite end	<b>18</b>	N Mini
Torque	<b>NA</b>	cm.N Mini
RECOMMENDED TORQUES		
Mating	<b>60</b>	cm.N
Panel nut	<b>NA</b>	cm.N
Clamp nut	<b>NA</b>	cm.N

## CONNECTOR PARTS. MATERIALS

BODY	BRASS
OUTER CONTACT	
CENTER CONTACT	BRASS
INSULATOR	PTFE
GASKET	
OTHERS PIECES	BRASS

## FINISH (all values are given in micrometers)

GOLD 0.2 OVER NICKEL 2
GOLD 1.3 OVER COPPER 2.5
-
-
GOLD 0.2 OVER NICKEL 2

TRIQUES

ISSUE	CREATION DATE	FILE PART-NUMBER
<b>9847B00</b>	<b>20/05/1996</b>	<b>96-1000-052</b>

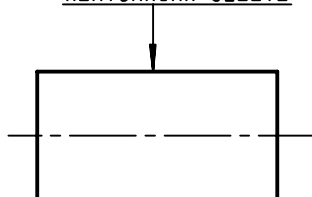

**RADIALL®**

 The information given here is subject to change without notice.  
 Design changes may be in order to improve the product.

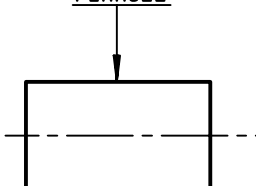
*Connect to the future*

**R124.075.323**ISSUE **9847B00** SERIES**SMA-COM**

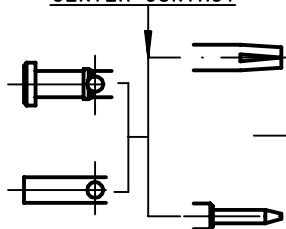
HEATSHRINK SLEEVE



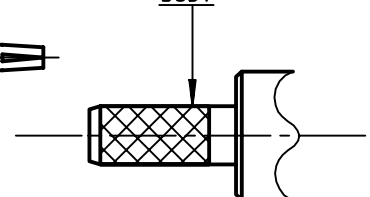
FERRULE



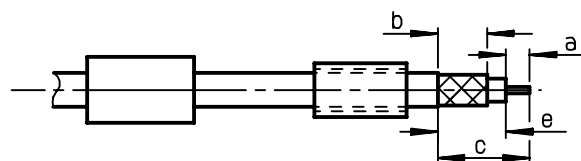
CENTER CONTACT



BODY

**①**

Slide heatshrink sleeve (R280.637.030-Option) and ferrule onto cable.  
Strip the cable.

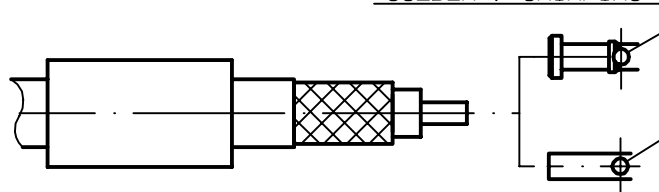


Stripping	a	b	c	d	e
inch	0.118	0.248	0.425	0	0.307
mm	3	6.3	10.8		7.8

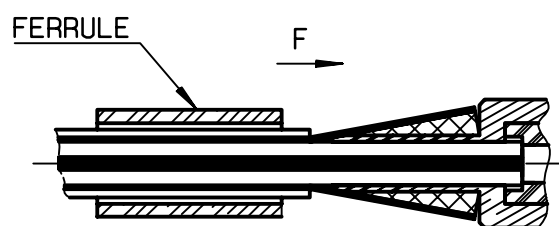
**②**

Slide center contact on until it bottoms against cable dielectric .  
Solder or crimp center contact .  
Crimping tool : R282.281.000 (2 x 4 pts)  
position 7  
+ positionner R282.967.012.  
-

SOLDER / CRIMPING

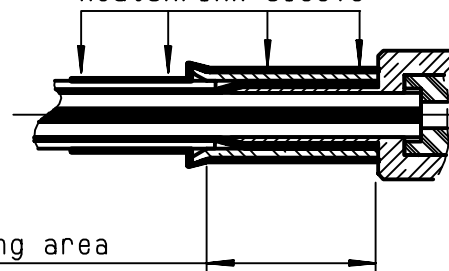
**③**

Fan the braid .  
Slide cable into the body by overtaking the insulator hard mounting point.  
Slide ferrule over the braid .  
(In direction F)

**④**

Crimp the ferrule with crimping tool R282.223.000 ( Hex. : .213 )(5.41) or crimping tool R282.293.000 ( M22520/5-01 ) + dies R282.235.011 ( M22520/5-11 )  
Cut excess of braid if necessary .  
Slide sleeve over ferrule and heatshrink in place (Option)  
-  
-

Shrink the heatshrink sleeve



Crimping area

# Mouser Electronics

Authorized Distributor

Click to View Pricing, Inventory, Delivery & Lifecycle Information:

Radial:

[R124075323](#) [R124075323W](#)