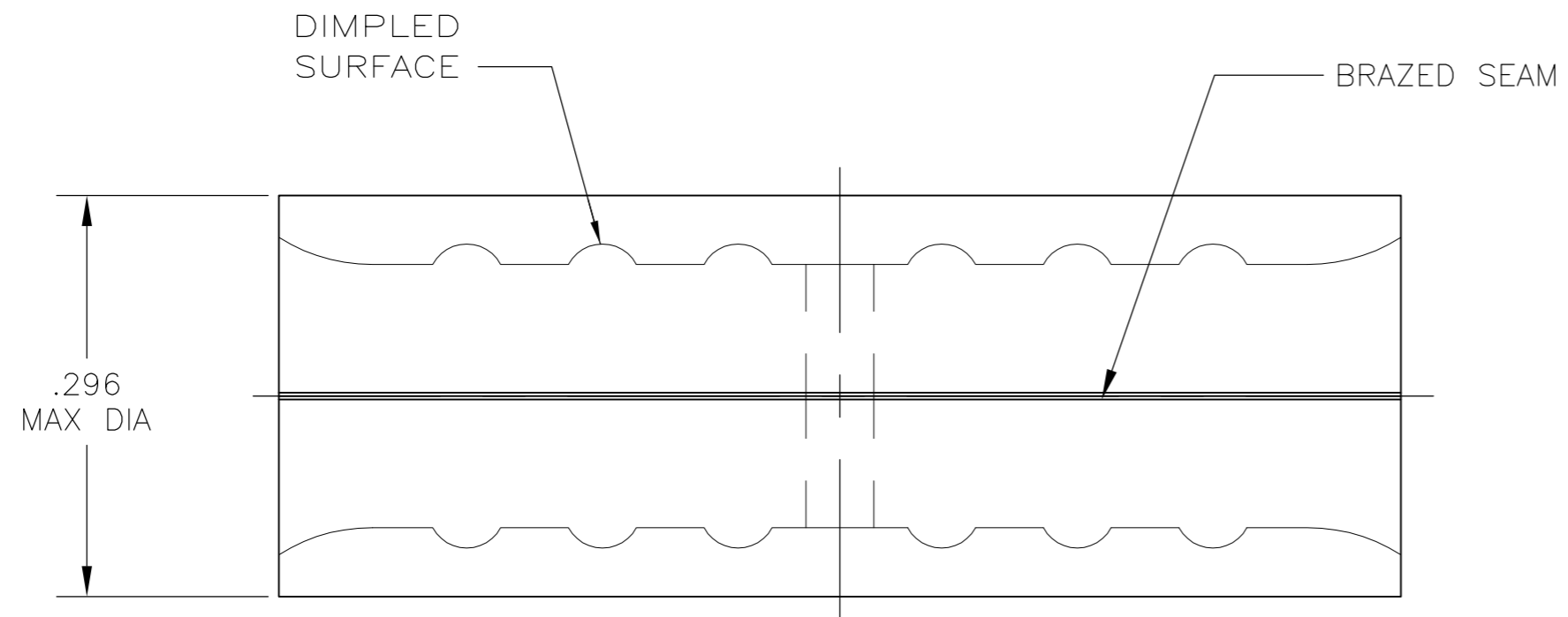


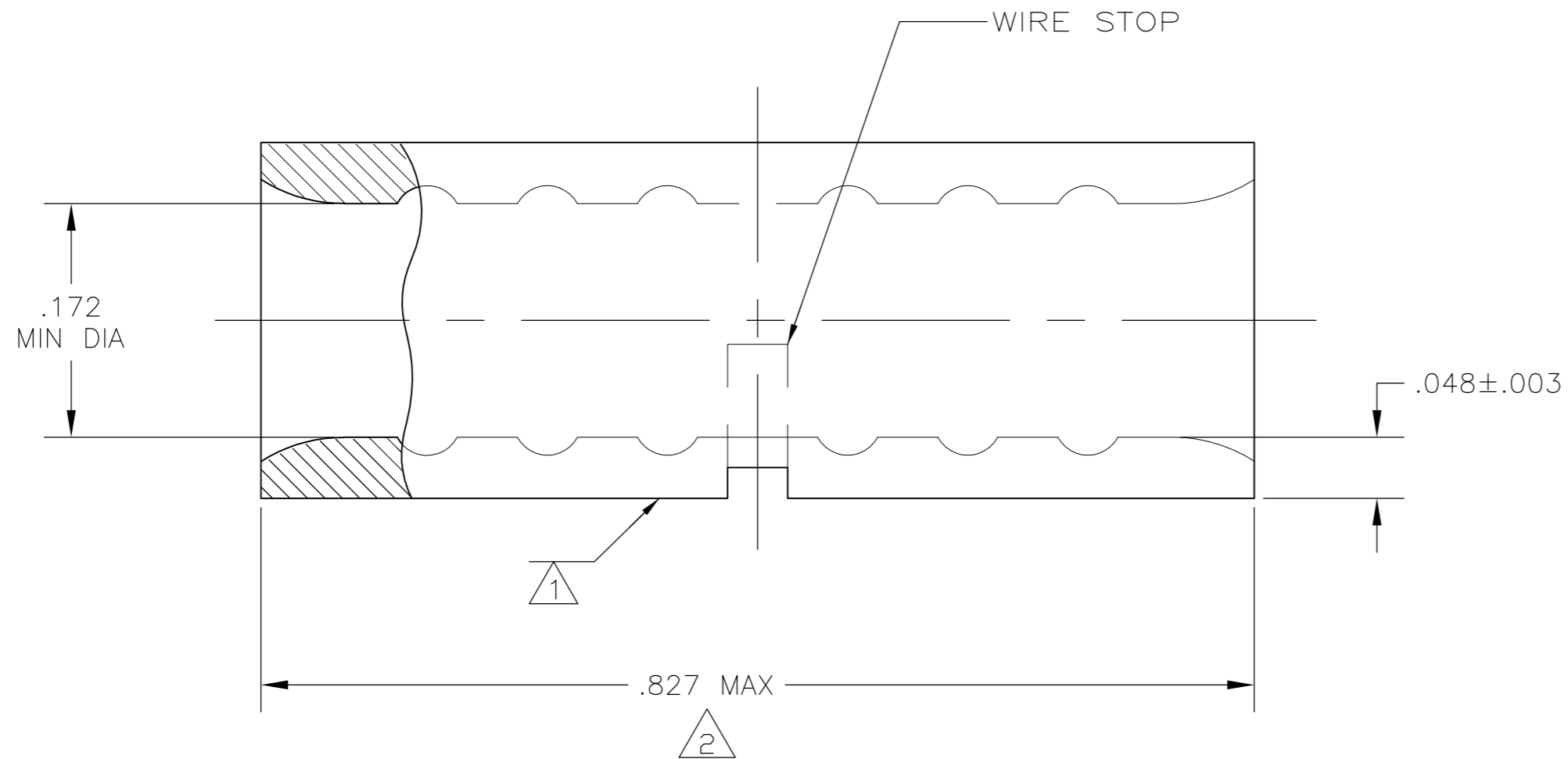
THIS DRAWING IS UNPUBLISHED. RELEASED FOR PUBLICATION
 © COPYRIGHT - By - ALL RIGHTS RESERVED.

LOC	DIST	REVISIONS			DAP		
		P	LTR	DESCRIPTION	DATE	DWN	APVD
G	14		C3	REVISED PER ECO-11-004917	11MAR11	RK	HMR



AMP WIRE RANGE	Listed FILE E13288	LR7189 Certified
8 AWG SOLID OR STRANDED	8 AWG STRANDED	8 AWG SOLID OR STRANDED

- 1 STAMP AMP 8W* APPROX AS SHOWN
- 2 MAXIMUM LENGTH DOES NOT INCLUDE MANUFACTURING TABS
- 3 COPPER PER ASTM B-152, ANNEALED
- 4 .000100 MIN TIN PLATE PER ASTM B-545
- 5 PRELIMINARY - NOT FOR PRODUCTION



25	LOOSE PIECE, BAG	8-34321-5
25	LOOSE PIECE, BOX	8-34321-3
1500	ON TAPE	2-34321-1
----	LOOSE PIECE	34321
QTY	PACKAGING TYPE	PART NO.

**AMP INCORPORATED
CUSTOMER SERVICE SYSTEMS**

MAX RECOMMENDED OPERATING TEMPERATURE:
170°C MAX

FOR ADDITIONAL PRODUCT INFORMATION OR COPIES OF DRAWINGS AND TECHNICAL DOCUMENTS

PRODUCT INFORMATION CENTER
1-800-522-6752

VOLTAGE RATING:
N/A

FOR APPLICATION TOOLING INFORMATION

TOOLING ASSISTANCE CENTER
1-800-722-1111

CIRCULAR MIL AREA:
6.64-10.5mm² [13,100-20,800]
SOLID OR STRANDED

FOR ORDER ENTRY

1-800-526-5142

THIS DRAWING IS A CONTROLLED DOCUMENT FOR AMP INCORPORATED. IT IS SUBJECT TO CHANGE AND THE CONTROLLING ENGINEERING ORGANIZATION SHOULD BE CONTACTED FOR THE LATEST REVISION.

THIS DRAWING IS A CONTROLLED DOCUMENT.		DWN	JR RUTH	19JAN07		TE Connectivity			
DIMENSIONS: INCHES		CHK	M SPICER	19JAN07		NAME			
TOLERANCES UNLESS OTHERWISE SPECIFIED:		APVD	M SPICER	19JAN07		SPLICE, BUTT, STANDARD, SOLISTRAND			
0 PLC ± -		PRODUCT SPEC	APPLICATION SPEC			SIZE	CAGE CODE	DRAWING NO	RESTRICTED TO
1 PLC ± -		MATERIAL			WEIGHT	A2 00779		C=34321	SCALE
2 PLC ± -		FINISH			CUSTOMER DRAWING		8:1		SHEET
3 PLC ± -		MATERIAL			CUSTOMER DRAWING		8:1		1 of 1
4 PLC ± -		MATERIAL			CUSTOMER DRAWING		8:1		REV
4 PLC ANGLES ± -		MATERIAL			CUSTOMER DRAWING		8:1		C3

Mouser Electronics

Authorized Distributor

Click to View Pricing, Inventory, Delivery & Lifecycle Information:

[TE Connectivity:](#)

[8-34321-3](#)