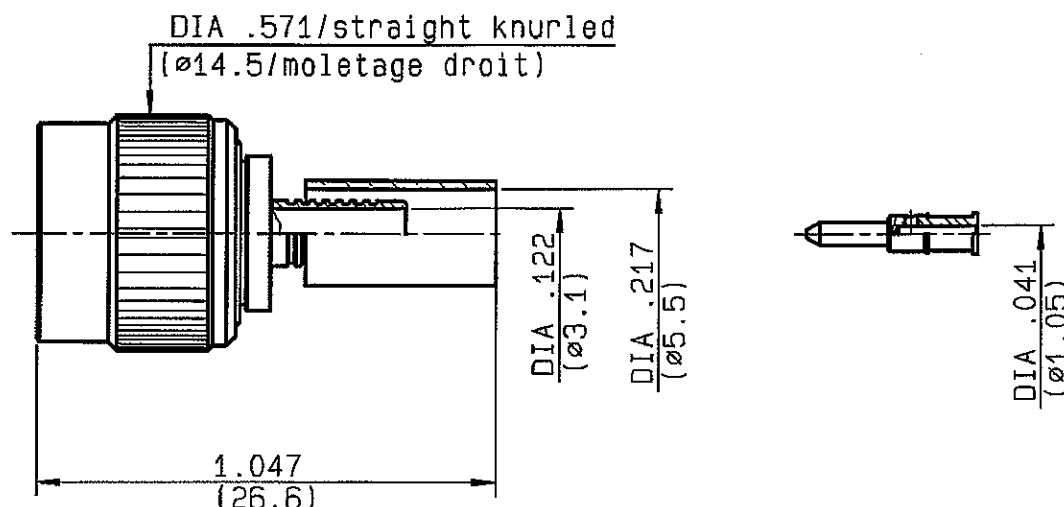


STRAIGHT PLUG CRIMP TYPE
CABLE 5/50 S
R143.082.000
SERIES TNC


NOMINAL IMPEDANCE	50	Ω	CABLES : KX 15	
FREQUENCY RANGE	0-11	GHz	RS 141	
TEMPERATURE RATING	-65/+165	$^{\circ}\text{C}$	RS 58	
V.S.W.R	1.30	+ 0 x F(GHz)Maxi		
RF INSERTION LOSS	0.06	\sqrt{F} (GHz) dB Maxi		
VOLTAGE RATING	500	Veff Maxi		
DIELECTRIC WITHSTANDING VOLTAGE	1500	Veff Mini		
INSULATION RESISTANCE	5000	M Ω Mini	OTHERS CHARACTERISTICS	
HERMETIC SEAL	NA	Atn.cm ³ /s	CABLE RETENTION	90 N Mini
LEAKAGE (pressurized only)	NA		CENTER CONTACT RETENTION	
MECHANICAL DURABILITY	500	Cycles	Axial force - mating end	27 N Mini
WEIGHT		gr	Axial force - opposite end	27 N Mini
SPECIFICATION			Torque	NA cm.N Mini
			RECOMMENDED TORQUES	
			Mating	NA cm.N
			Panel nut	NA cm.N
			Clamp nut	NA cm.N

CONNECTOR PARTS	MATERIALS	FINISH	(all values are given in micrometers)
BODY	BRASS	NICKEL 2	
OUTER CONTACT			
CENTER CONTACT	BRASS	GOLD 0.5 OVER NICKEL 2	
INSULATOR	PTFE	-	
GASKET	SILICONE RUBBER	-	
OTHERS PIECES	BRASS	NICKEL 2	

ISSUE
0617F
CREATION DATE
23/11/1990
FILE PART-NUMBER

RADIALL®

The information given here is subject to change without notice.
 Design changes may be in order to improve the product.

Connect to the future



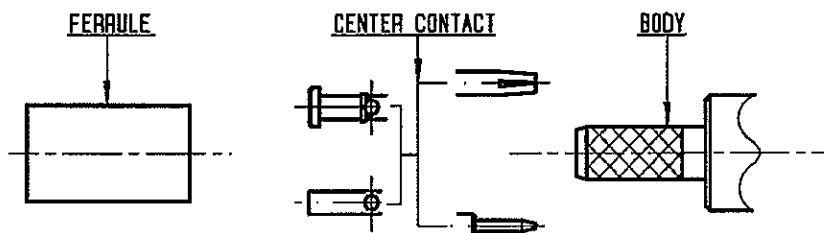
R143.082.000

ISSUE

0617F

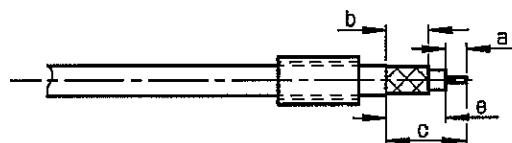
SERIES

TNC



①

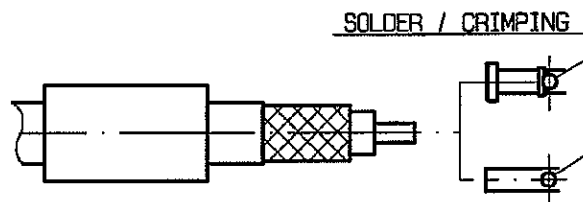
Slide ferrule onto cable
Strip the cable .



Stripping	a	b	c	d	e
inch	0.157	0.335	0.591	0	0.433
mm	4	8.5	15		11

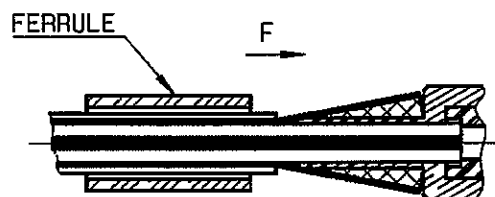
②

Slide center contact on until it
bottoms against cable dielectric .
Solder or crimp center contact .
Crimping tool : R282 223 000 (Hex. : 0.068)
or R282 293 000 (M22520/5-01)
+ dies R282 235 011 (M22520/5-11) .



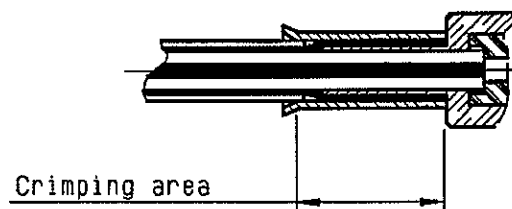
③

Fan the braid .
Slide cable into the body until
bottoms against insulator .
Slide ferrule over the braid .
(In direction F)



④

Crimp the ferrule with crimping tool
R 282 223 000 (Hex. : 5.4) or
crimping tool R282 293 000 (M22520/5-01)
+ dies R282 235 011 (M22520/5-11)
Cut excess of braid if necessary .



Mouser Electronics

Authorized Distributor

Click to View Pricing, Inventory, Delivery & Lifecycle Information:

Radial:

[R143082000W](#)