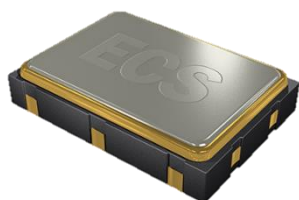




The ECS-96SMF 45.000 MHz Miniature SMD Monolithic Crystal Filter offers a narrow bandwidth and a 2 pole response in a 5 x 7 package.

[Request a Sample](#)

ECS-96SMF Series



- 5 x 7 Footprint
- 2 Pole Filter
- Tape and Reel Packaging

OPERATING CONDITIONS / ELECTRICAL CHARACTERISTICS

Part Number *	Center Frequency Fo	Passband Min.		Stopband Max.		Attenuation Guaranteed Min.		Ripple Max.	Loss Max.	Terminating Impedance	Operating Temperature	No. of Poles
	MHz	dB	KHz	dB	KHz	dB	KHz	dB	dB	$\Omega/\mu\text{F}$	$^{\circ}\text{C}$	
ECS-96SMF45A7.5	45.000	3	± 3.75	20	± 25.0	70	-910	1.0	2.0	650//3.5	-30 ~ +80	2
ECS-96SMF45A12	45.000	3	± 6	15	± 20.0	70	-910	1.0	2.0	650//5.0	-30 ~ +80	2
ECS-96SMF45A15	45.000	3	± 7.5	15	± 25.0	70	-910	1.0	2.0	560//6.0	-30 ~ +80	2
ECS-96SMF45A30	45.000	3	± 15	15	± 60.0	70	-910	1.0	2.0	1200//1.8	-30 ~ +80	2

Package Dimensions (mm)

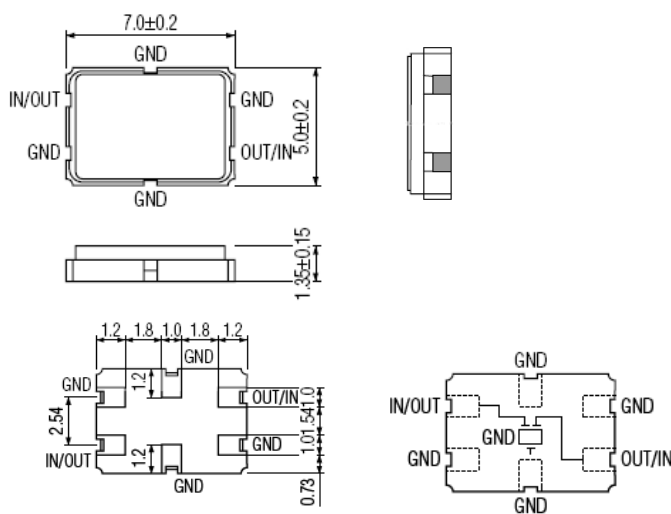


Figure 1) Top, Side and Bottom views

<Top View>

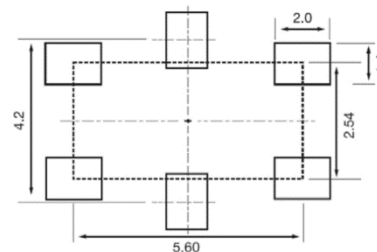


Figure 2) Land Pattern