

A

B

C

D

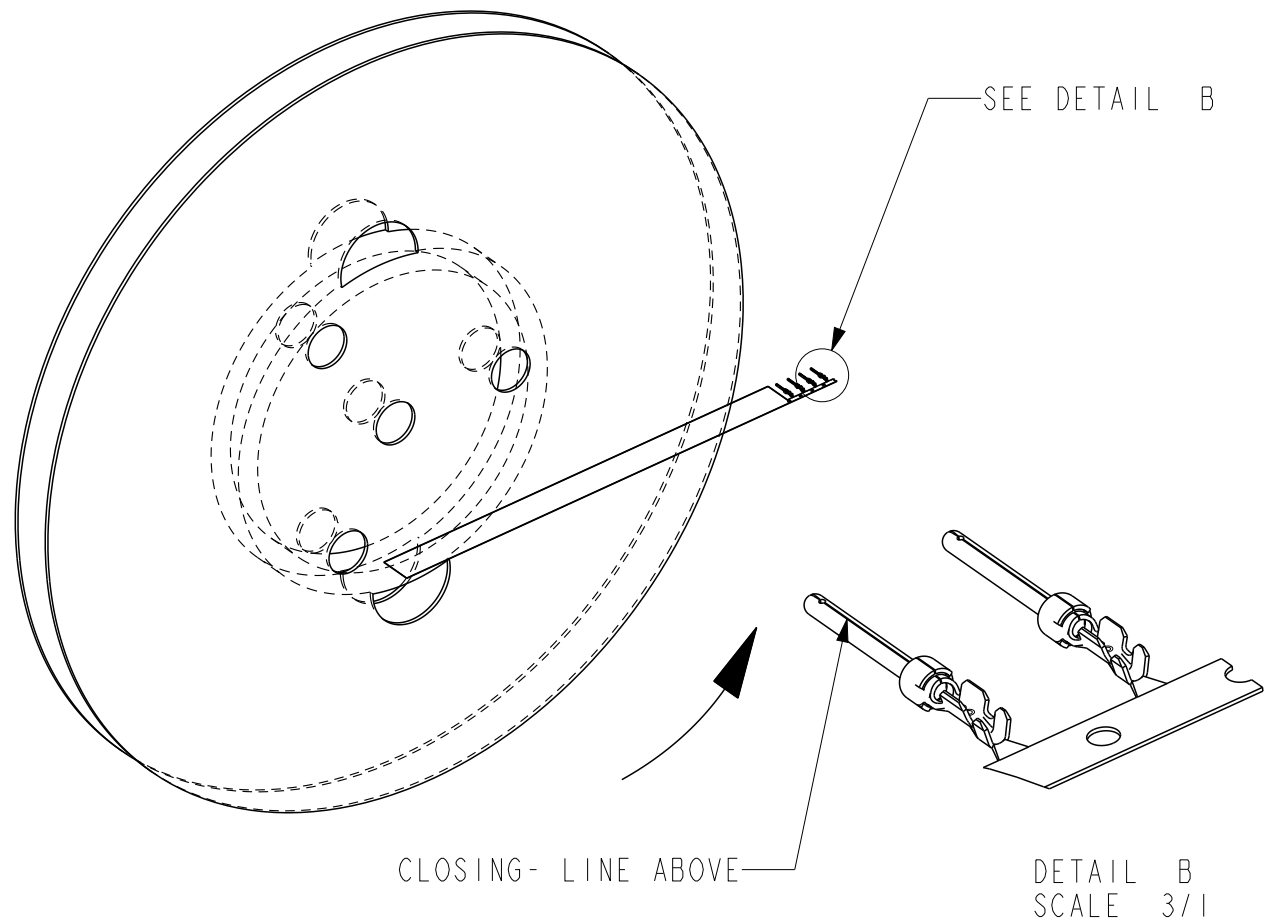
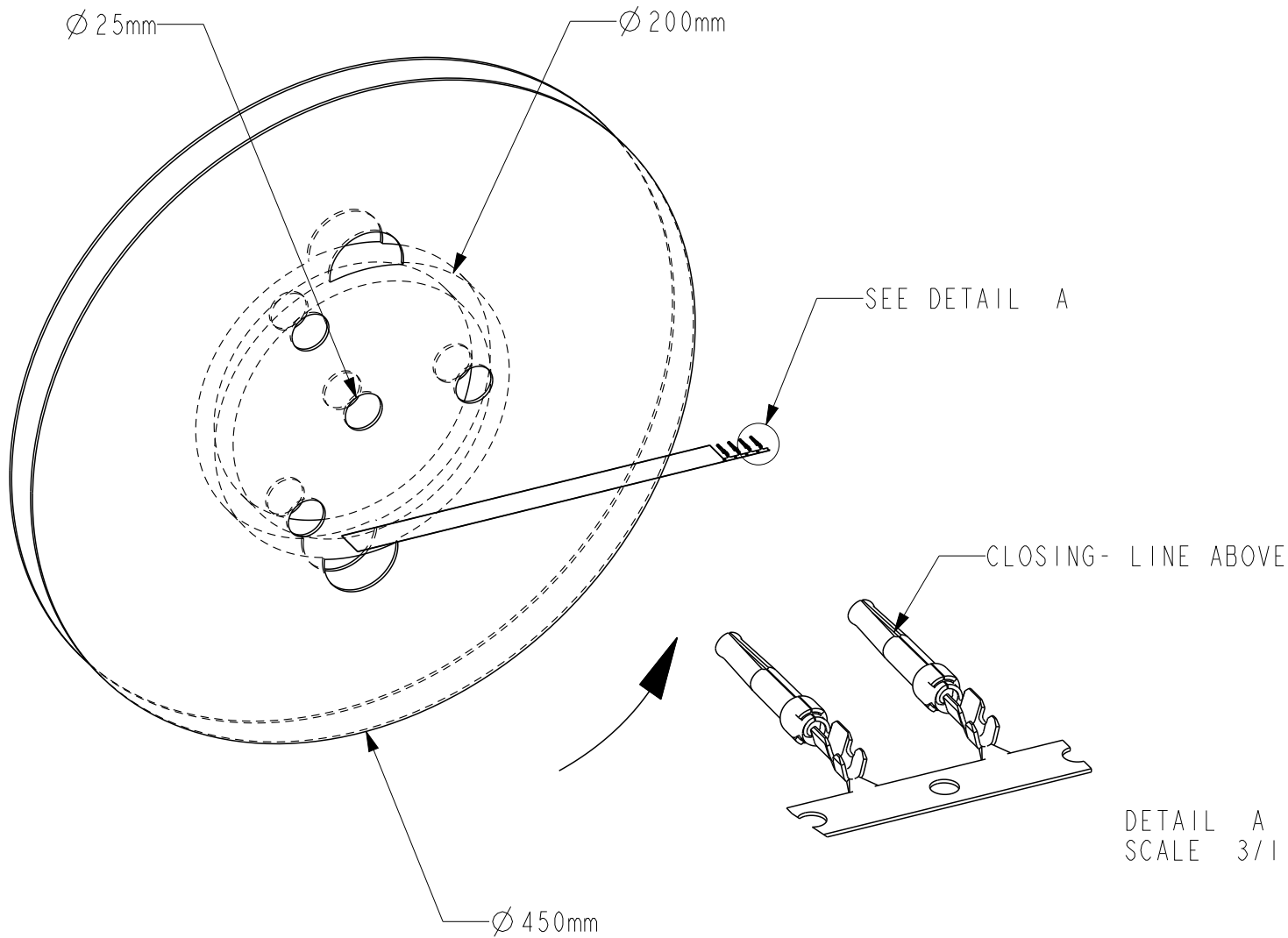
A

B


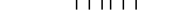

C

D

| REFERENCE FOR REEL ACCORDING TO FEEDING DIRECTION | | | | | |
|---|--|------------------------------|--|---------|--|
| GAUGE | | REEL OF 5000 FEMALE CONTACTS | | GAUGE | |
| # 24-28 | | 86566610064LF | | # 24-28 | |
| # 20-24 | | 86566620064LF | | # 20-24 | |
| # 24-28 | | 86566610065LF | | # 24-28 | |
| # 20-24 | | 86566620065LF | | # 20-24 | |
| # 24-28 | | 86566610067LF | | # 24-28 | |
| # 20-24 | | 86566620067LF | | # 20-24 | |
| GAUGE | | REEL OF 5000 PIN CONTACTS | | GAUGE | |
| # 24-28 | | 86564610064LF | | # 24-28 | |
| # 20-24 | | 86564620064LF | | # 20-24 | |
| # 24-28 | | 86564610065LF | | # 24-28 | |
| # 20-24 | | 86564620065LF | | # 20-24 | |
| # 24-28 | | 86564610067LF | | # 24-28 | |
| # 20-24 | | 86564620067LF | | # 20-24 | |



NOTE : ROHS INFORMATIONS
The LF products meet European union directives and other country regulations as described in GS-47-0004
Terminations plating spec : 1.3um Nickel min + 1.3um Sn min
Packaging Spec : see GS-14-920

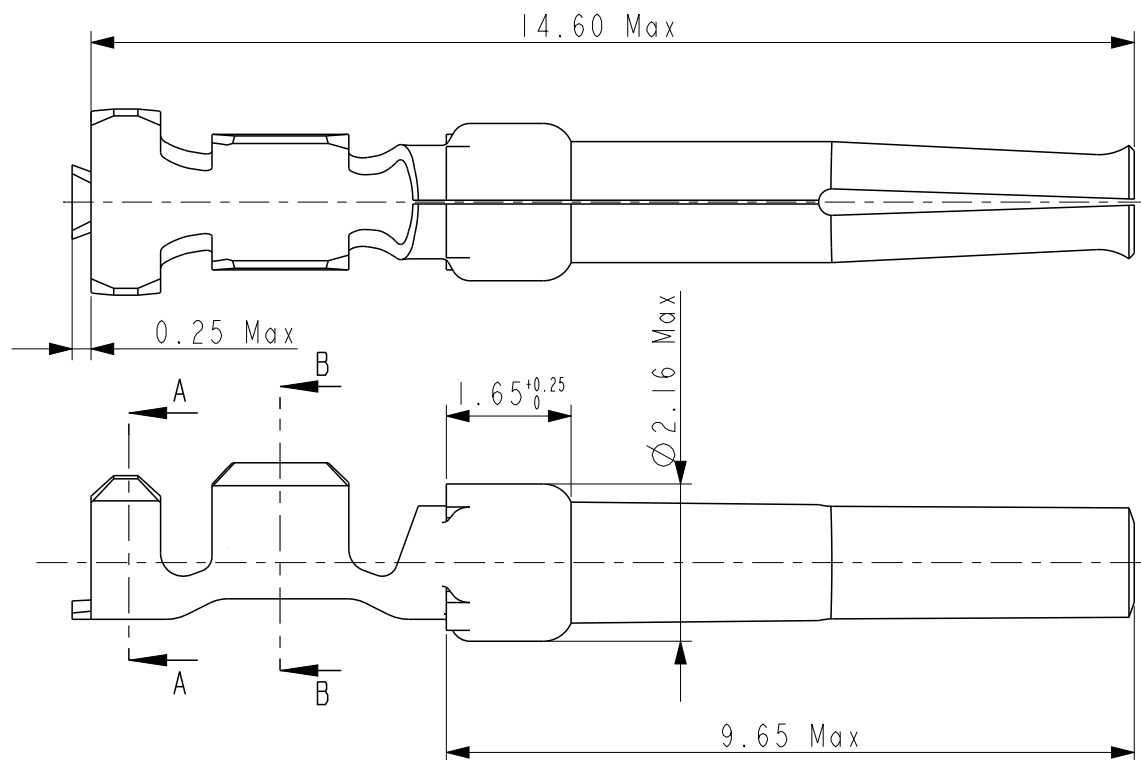
| | | | | | | | | | | | | |
|--|---------------------------------------|---------|-------|-----------------|---------------|---|---|---|---------|---------------|--------------|----------|
| spec ref | | - | | dr | P-Mathew Nebu | 2011/05/17 | projection  | mm  | size | A3 | scale | 4/15 |
| tolerance std ISO 406 ISO 1101 | TOLERANCES UNLESS OTHERWISE SPECIFIED | | | eng | Paul Mithun | 2019/03/18 | | | ec n no | ELX-I-32091-1 | | |
| | | | | chr | - | - | | | | | | |
| | | | | | appr | K-Paul Biju | 2019/03/19 | product family | | - 8656 | rel level | Released |
| surface  ISO 1302 | linear | 0.X | ±0.3 | Amphenol FCi | title | CRIMP PIN & SOCKET 20-28AWG, 5000 Reel Qty | | | dwg no | C01-8656-1527 | | rev L |
| | | 0.XX | ±0.1 | | | | | | | | | |
| | | 0.XXX | ±0.05 | | | | | | | | | |
| | | angular | 0° | ±2° | | cat. no. | - | Product - Customer Drw | | | sheet 1 of 2 | |

A

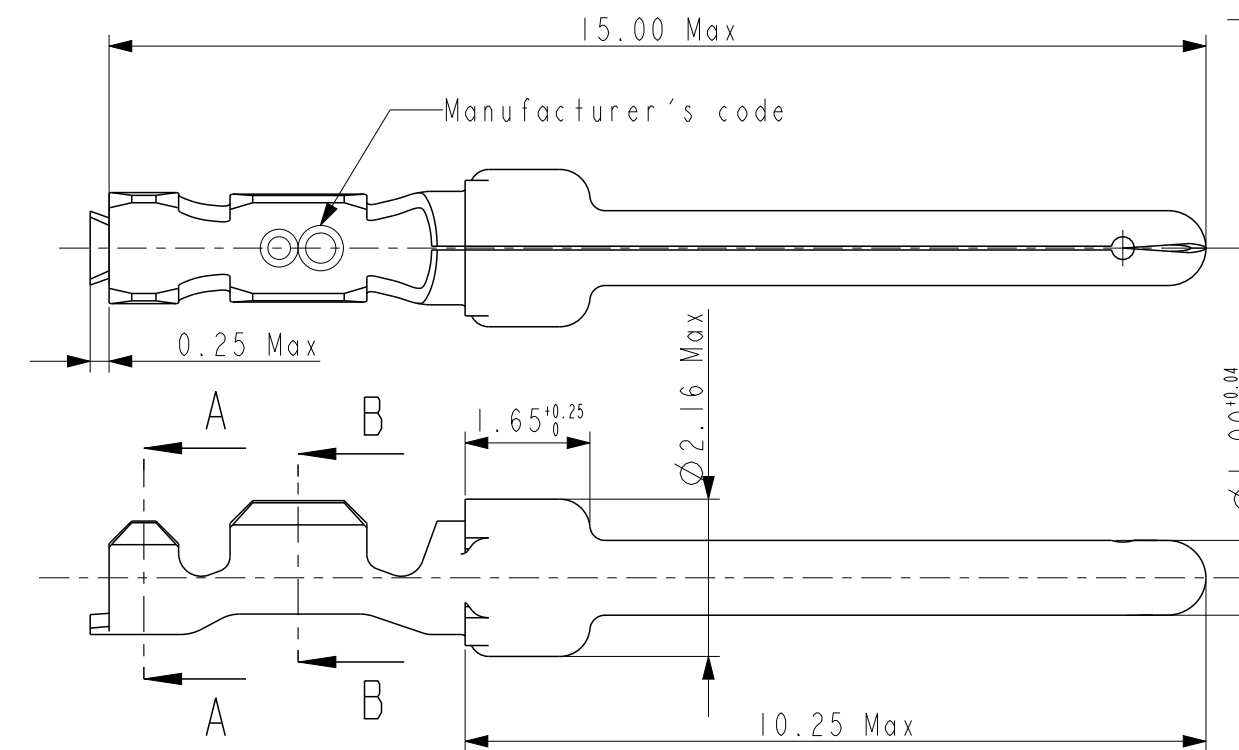
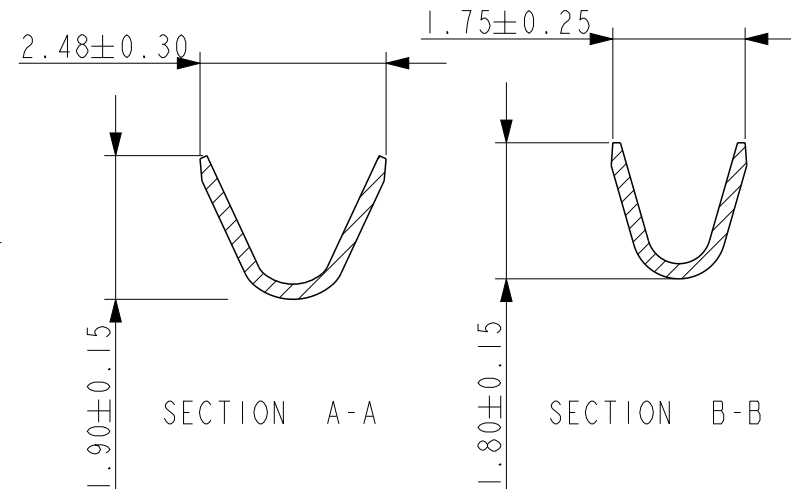
B

C

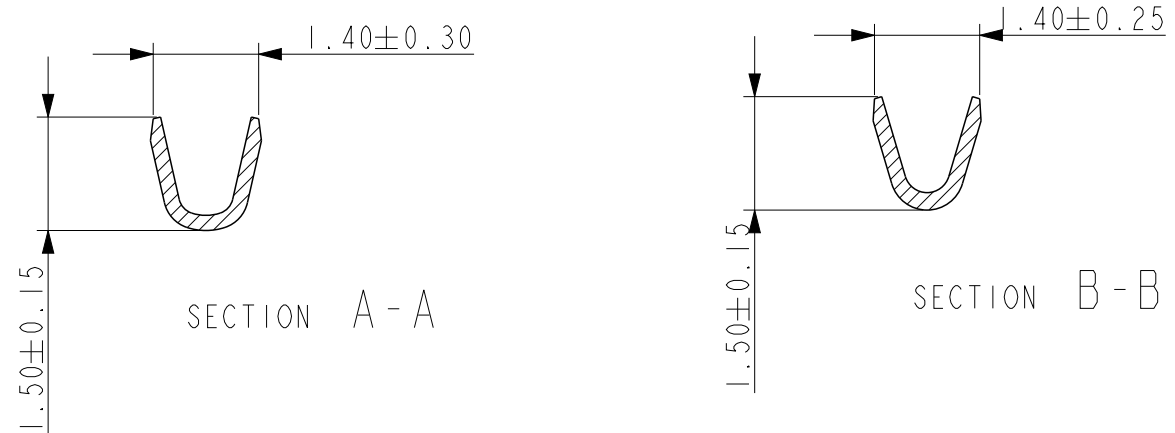
D



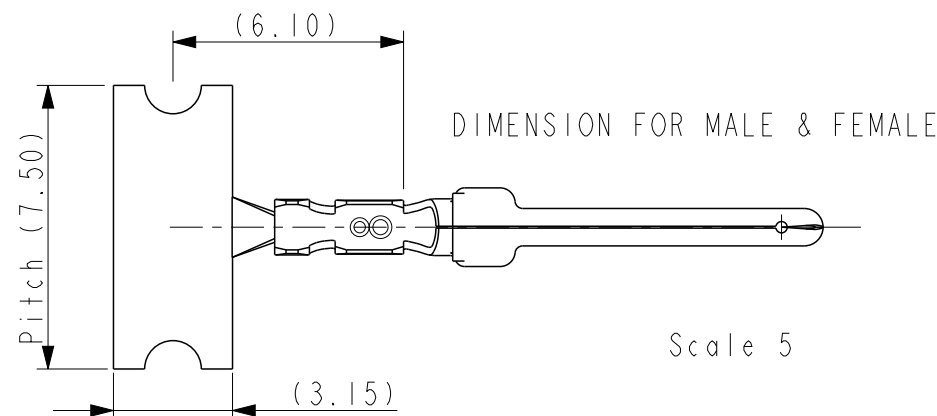
CROSS SECTION
FOR CT #20-24



CROSS SECTION
FOR CT #24-28



- NOTES
- 1- Material : Phosphor bronze, thickness 0.20
 - 2 -Finish on contact area : termination 064:gold flash
termination 065:076μ Au / GXT
termination 067:0,4μ Au / GXT
finish on termination : Tin over Nickel
 - 3 -Wire range :20 to 28 AWG(see ref sheet 1/2)
 - 4 -Max outer dia of wire insulator:
-1.52 mm max for contact #20-24
-1.02 mm max for contact #24-28
 - 5 -Current carrying capacity per contact:
5 Amps max when crimped to #20 AWG
5 Amps max when crimped to #22 AWG
3 Amps max when crimped to #24 AWG
2 Amps max when crimped to #26 AWG
1 Amps max when crimped to #28 AWG
 - 6 -After 5 insertions into connector,
contact retention must be 5 pounds axial load min
 - 7 -When contact is crimped to 20 AWG, the insulation
support crimped height must be 1.78 mm max to ensure
a proper insertion into housing.
 - 8-Reel should be continuous without any contacts
missing in between
 - 9 -Packaging : 5000 Contacts Per Reel



| | | | | | | | | | | |
|---------------|---------------------|------|---------------|------------|----------------|------------------------|--------------|---------------|-----------|----------|
| spec ref | - | dr | P-Mathew Nebu | 2011/05/17 | projection | mm | size | A3 | scale | 10/1 |
| tolerance std | ISO 406 ISO 1101 | eng | Paul Mithun | 2019/03/18 | chr | - | ecn no | ELX-I-32091-1 | rel level | Released |
| surface | linear | appr | K-Paul Biju | 2019/03/19 | product family | - | rel level | Released | rev | L |
| ISO 1302 | angular | 0° | ±2° | cat. no. | - | Product - Customer Drw | sheet 2 of 2 | | | |

| | | | |
|-----------------|--------------------|-------------------------|---------------|
| Amphenol FCi | CRIMP PIN & SOCKET | 20-28AWG, 5000 Reel Qty | C01-8656-1527 |
|-----------------|--------------------|-------------------------|---------------|

Mouser Electronics

Authorized Distributor

Click to View Pricing, Inventory, Delivery & Lifecycle Information:

[FCI / Amphenol:](#)

[86564620065LF](#) [86566630065LF](#)