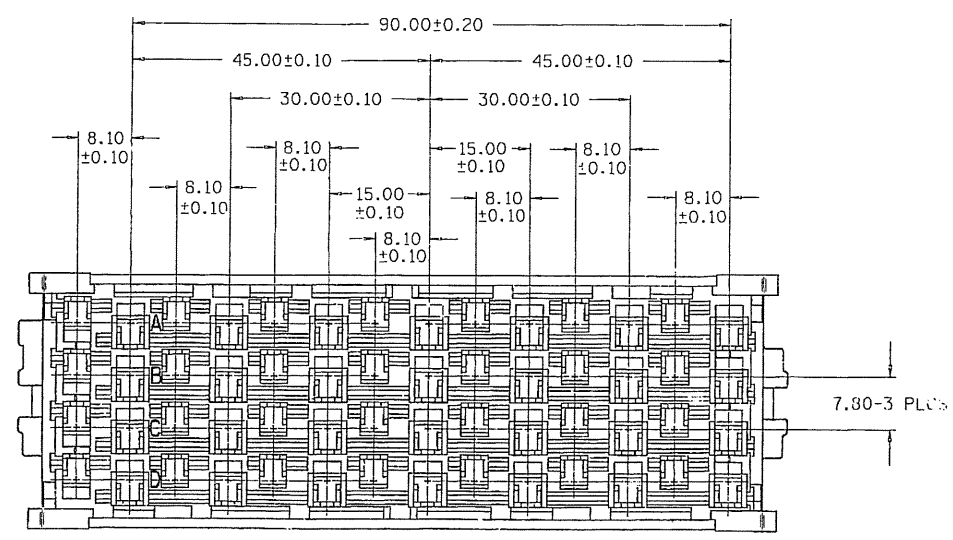
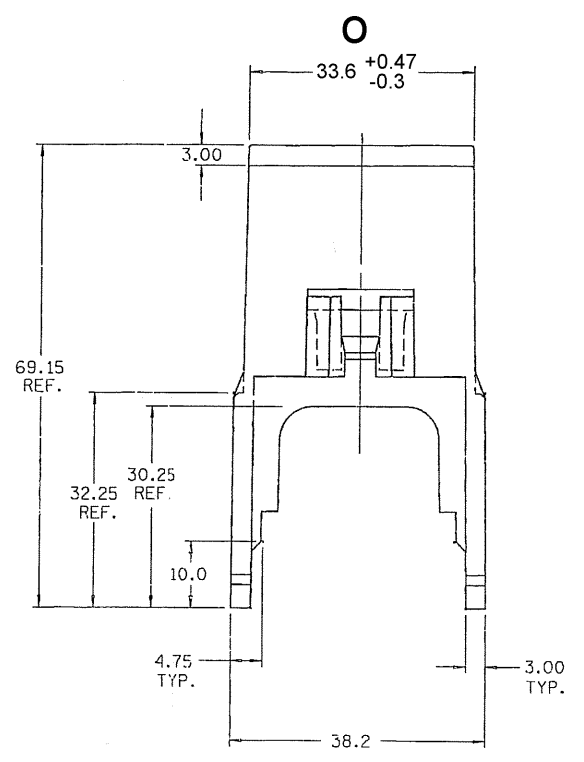
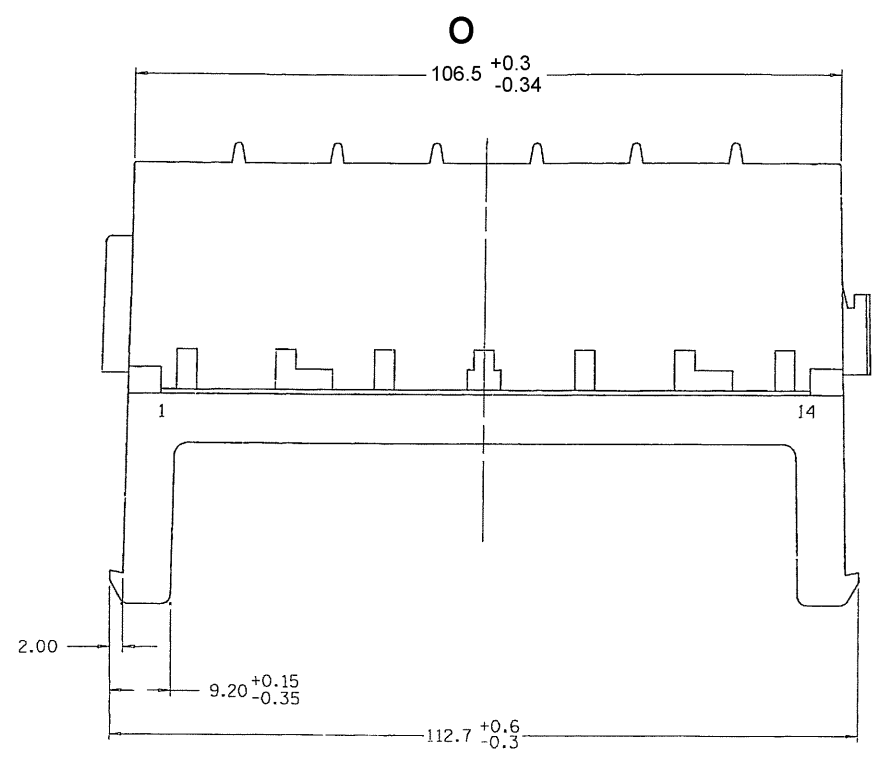


PACKARD ELECTRIC DIVISION
GENERAL MOTORS CORPORATION
WARREN, OHIO

DATE	SYM	REVISION RECORD	AUTHORITY	DR	CK
15MY95	A	RELEASED	950005	RLB	RLB
23OC95	A1	REVISED - MAT'L	167530	RLB	RLB
28MR06	A2	MAT'L SPEC WAS R0071713 AND ADDED NOTES 10 & 11	279078	JTZ	FRG
01MY06	A3	106.5 +0.3/-0.34 WAS 106.5 AND 33.6 +0.47/-0.3 WAS 33.6	280134	MDH	FRG



- NOTES** -
- THIS PART ACCEPTS 12092507 SECONDARY TERMINAL LOCK.
 - THIS PART ACCEPTS 12092823 COVER OR EQUIVALENT.
 - THIS PART ACCEPTS (2) 12077530 COVER CLIP OR EQUIVALENT
 - THIS PART MATES WITH 12092327 MOUNTING BASE OR EQUIVALENT.
 - MAX. INSULATION CRIMP MUST BE LESS THAN 4.75 HIGH AND 4.00 WIDE FOR ROWS A,B,C, & D - CAVITIES 3,5,7,9,11 & 13.
 - MAX. INSULATION CRIMP MUST BE LESS THAN 6.30 HIGH AND 5.55 WIDE FOR ROWS A,B,C, & D - CAVITIES 1,2,4,6,8,10,12 & 14.
 - THESE CAVITIES ACCEPT 12092556 TERMINAL OR EQUIVALENT: ROWS A,B,C, & D - CAVITIES 1,3,5,7,9,11 & 13.
 - THESE CAVITIES ACCEPT 12092525 TERMINAL BUS BAR OR EQUIVALENT: ROWS A,B,C, & D - CAVITIES 2,4,6,8,10,12 & 14.
 - SEALING CODE 0.
 - MATERIAL RECYCLING CODE PER ISO 11469. (2.3)(0.1) CHARACTERS AS SHOWN TO BE LOCATED ON ANY EXTERIOR SURFACE. OPTIONAL CONSTRUCTION TO BE NO MATERIAL RECYCLING CODE.
 - (2.3)(0.1) RAISED DELPHI CORPORATE BRAND TO BE LOCATED ON ANY EXTERIOR SURFACE, PREFERABLY VISIBLE AT FINAL ASSEMBLY. OPTIONAL CONSTRUCTION TO BE "PED" OR NO LOGO.

WARNING
GEOMETRY MAY NOT BE
DRAWN TO SCALE

		FILE SPEC: PED/NEGATI ***USER*** DGN SPECIFICATION ***** *****
CODE NO. 6900		METRIC DIMENSIONS ARE IN MILLIMETERS UNLESS OTHERWISE SPECIFIED.
D.C. DATE 15MY95	SCALE NONE	DR. RON BURNS DATE 15MY95
EST. NO. REFERENCE NO. 12177145 R10 SIZE	CK. A. HERRMANN APPR. DATE 17MY95	DATE 17MY95
MATERIAL SPEC M2279001 PA66 GF14 HS IM BLK		
NAME BASE FUSBLK MINI 56F		
PART NO. 1217 7145		SIZE D
PRODUCT INFORMATION DRAWING		

Mouser Electronics

Authorized Distributor

Click to View Pricing, Inventory, Delivery & Lifecycle Information:

[Aptiv:](#)

[12177145](#)