



MICROPROCESSOR  
CORE MODULE



# RABBITCORE® RCM3700 SERIES

Family of compact modules comes in three versions with varying memory sizes, providing a cost-competitive multi-serial to Ethernet solution

The RabbitCore RCM3700 series extends beyond standard serial to Ethernet devices by providing up to six serial ports along with a rich embedded I/O control feature set such as PWM and Quadrature Decoder Inputs. Additionally, the modules include a backup battery for protected data storage and for the real-time clock.

The software environment for the RCM3700 series offers an excellent platform for developing applications with web server capabilities, especially for remote monitoring and control. With a 1 MB on-board serial Flash, the RCM3700 series can store additional web pages or be used as a datalogger.

The RCM3700 easily mounts onto a user-designed motherboard, making it ideal for new and existing applications. With an integrated hardware and software solution, the RCM3700 series ensures your product gets to market faster with lower development costs.

## BENEFITS

- Up to 4 serial ports for multiple device connectivity
- 10Base-T with optional 10/100Base-T Ethernet
- Up to 512K Flash for code and up to 512K SRAM for data
- 1 MB of on-board serial Flash utilizing FAT file support for reliable data storage
- Embedded web server capability for remote monitoring and control
- Exceptionally fast performance for math, logic and I/O

## RELATED PRODUCTS



RabbitCore®  
RCM3000  
Series



Rabbit  
MiniCore®  
RCM6700



RabbitCore®  
RCM3209  
Series

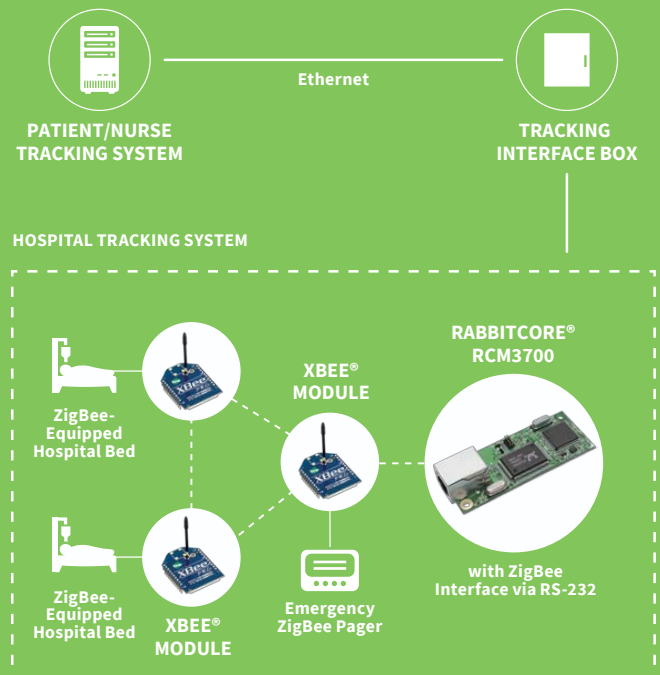


RabbitCore®  
RCM3600  
Series



Dynamic C®

## APPLICATION EXAMPLE



## SOFTWARE






The Dynamic C® integrated development environment reduces the time and effort to write real-time software for embedded systems that use a Rabbit microprocessor, enabling easy development of a wide range of applications.

Rabbit products and Dynamic C integrate editing, compiling, linking, loading and debugging into a single development environment as one function. There are no compatibility issues when moving from one stage to another. Once the design is complete, you can debug it on the target hardware and see how your code works. Because it is a dialect of C, the Dynamic C language has all the statements and constructions

of traditional C, plus extensions that make it easier to write reliable, real-time multi-tasking software. The Dynamic C integrated development environment allows for easy hardware migration, moving from a single-board computer to chip level production.

Dynamic C also includes highly useful software components that can add functionality and value to your applications. This functionality includes web server capability, filing system, remote firmware updates, and wired and wireless security. Compatible software components are listed below.

## SOFTWARE COMPONENTS

COMPONENT	DESCRIPTION
 <b>RABBITWEB</b>	System of HTML tags used to easily create web interfaces to monitor and control embedded applications
 <b>REMOTE PROGRAM UPDATE (RPU)</b>	Allows for remote firmware updates from anywhere in the world using an Internet connection
 <b>FILE ALLOCATION TABLE (FAT)</b>	Popular network-accessible file system for flashed based memories
 <b>SECURE SOCKETS LAYER (SSL) / TRANSPORT LAYER SECURITY (TLS)</b>	The industry standard for web security in embedded applications
 <b>ADVANCED ENCRYPTION STANDARD (AES)</b>	128-bit encryption for transferring sensitive data

## RABBITCORE® RCM3700 DEVELOPMENT KIT



### THE RCM3700 DEVELOPMENT KIT CONTENTS:

- RCM3700 module
- Prototyping board with standoffs/connectors
- USB cable to program RCM3700 via interface board
- Universal power supply
- Dynamic C CD-ROM, including product documentation on disk
- Getting Started instructions
- Registration card

## SPECIFICATIONS

## RabbitCore® RCM3700 Specifications

FEATURES	RCM3700	RCM3710	RCM3720
<b>MICROPROCESSOR</b>	Low-EMI Rabbit® 3000 at 22 MHz		
<b>ETHERNET PORT</b>	10Base-T interface, RJ-45, 2 LEDs		
<b>FLASH MEMORY</b>	512K	256K	512K
<b>SRAM</b>	512K	128K	256K
<b>SERIAL FLASH MEMORY</b>	1 MB		
<b>BACKUP BATTERY</b>	Connection for user-supplied backup battery (to support RTC and SRAM)		
<b>GENERAL-PURPOSE I/O</b>	33 parallel digital I/O lines: <ul style="list-style-type: none"> <li>• 31 configurable I/O</li> <li>• 2 fixed outputs</li> </ul>		
<b>ADDITIONAL I/O</b>	Reset		
<b>EXTERNAL I/O BUS</b>	Can be configured for 8 data lines and 5 address lines (shared with parallel I/O lines), plus I/O read/write		
<b>SERIAL PORTS</b>	Four 3.3V CMOS-compatible ports configurable as: <ul style="list-style-type: none"> <li>• 4 asynchronous serial ports (with IrDA) or</li> <li>• 3 clocked serial ports (SPI) plus 1 HDLC (with IrDA) or</li> <li>• 1 clocked serial port (SPI) plus 2 HDLC serial ports (with IrDA)</li> </ul>		
<b>SERIAL RATE</b>	Maximum asynchronous baud rate = CLK/8		
<b>SLAVE INTERFACE</b>	A slave port allows the RCM3700 series to be used as an intelligent peripheral device slaved to a master processor, which may either be another Rabbit 3000 or any other type of processor		
<b>REAL-TIME CLOCK</b>	Yes		
<b>TIMERS</b>	Ten 8-bit timers (6 cascadable, 3 reserved for internal peripherals), one 10-bit timer with 2 match registers		
<b>WATCHDOG/SUPERVISOR</b>	Yes		
<b>PULSE-WIDTH MODULATORS</b>	4 PWM output channels with 10-bit free-running counter and priority interrupts		
<b>INPUT CAPTURE/ QUADRATURE DECODER</b>	2-channel input capture can be used to time input signals from various port pins <ul style="list-style-type: none"> <li>• 1 quadrature decoder unit accepts inputs from external incremental encoder modules or</li> <li>• 1 quadrature decoder unit shared with 2 PWM channels</li> </ul>		
<b>POWER</b>	4.75–5.25 VDC 100 mA @ 22.1 MHz, 5V; 78 mA @ 11.05 MHz, 5V		
<b>OPERATING TEMPERATURE</b>	–40° C to +70° C		
<b>HUMIDITY</b>	5% to 95%, non-condensing		
<b>CONNECTORS</b>	One 2 x 20, 0.1" pitch		
<b>BOARD SIZE</b>	1.20" x 2.95" x 0.89" (30 mm x 75 mm x 23 mm)		

## PART NUMBERS

## DESCRIPTION

20-101-1305	RCM3700
20-101-1328	RCM3710
20-101-1329	RCM3720

DIGI SERVICE AND SUPPORT / You can purchase with confidence knowing that Digi is always available to serve you with expert technical support and our industry leading warranty. For detailed information visit [www.digi.com/support](http://www.digi.com/support).

© 1996-2016 Digi International Inc. All rights reserved.  
All trademarks are the property of their respective owners.

91001579  
C2/816

DIGI INTERNATIONAL WORLDWIDE HQ  
877-912-3444 / 952-912-3444 / [www.digi.com](http://www.digi.com)

DIGI INTERNATIONAL FRANCE  
+33-1-55-61-98-98 / [www.digi.fr](http://www.digi.fr)

DIGI INTERNATIONAL JAPAN  
+81-3-5428-0261 / [www.digi-intl.co.jp](http://www.digi-intl.co.jp)

DIGI INTERNATIONAL SINGAPORE  
+65-6213-5380

DIGI INTERNATIONAL CHINA  
+86-21-50492199 / [www.digi.com.cn](http://www.digi.com.cn)



# Mouser Electronics

Authorized Distributor

Click to View Pricing, Inventory, Delivery & Lifecycle Information:

DIGI:

[20-101-1329](#)