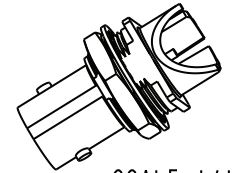


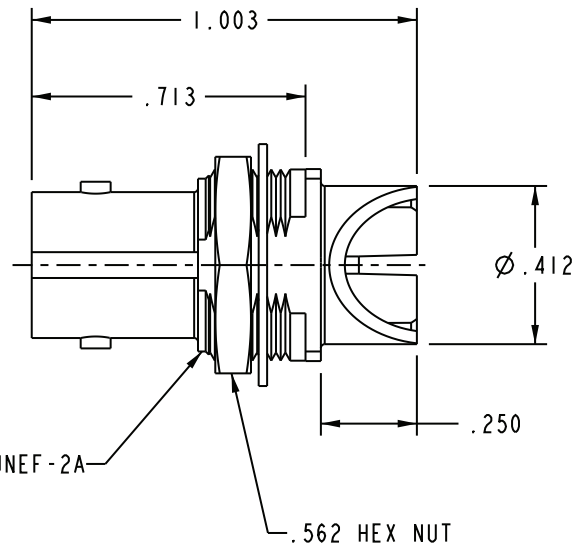
DASH NUMBER	"A" BOARD THICKNESS
-1	.060 - .064
-2	.028 - .033
-3	.084
-4	.120

DATA CONTAINED IN THIS DOCUMENT IS PROPRIETARY TO EMERSON CONNECTIVITY SOLUTIONS AND SHALL NOT BE DISCLOSED, COPIED OR USED FOR PROCUREMENT OR MANUFACTURE WITHOUT EXPRESS WRITTEN PERMISSION

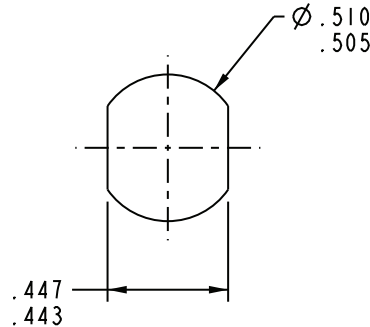
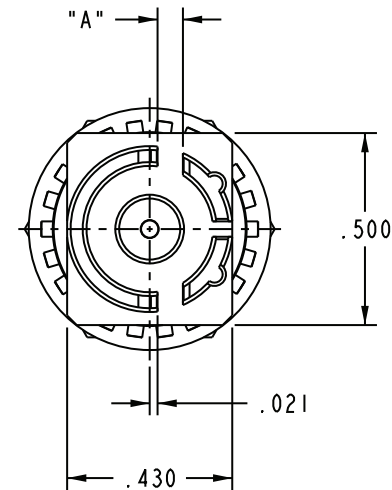
REVISIONS			
REV	DESCRIPTIONS	DATE	APPROVED
F	ECO 52157	2/22/10	T. KOHLER



SCALE 1/1

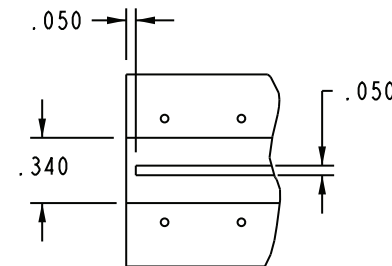


- 1 SHOWN



RECOMMENDED
PANEL CUT-OUT

SCALE 2/1



SCALE 1/1


RECOMMENDED
PCB LAYOUT

3. MAXIMUM PANEL THICKNESS .179

2. FINISH: BODY: TFS-1B (GOLD, 2G)
CONTACT: TFS-1B (GOLD, 5G)
HARDWARE: TFS-1A (NICKEL)

1. 75Ω CIRCUIT BOARD BULKHEAD EDGE MOUNT
"BNC" STYLE RECEPTACLE

NOTES: UNLESS OTHERWISE SPECIFIED.

INTERPRET DRAWING PER MIL-STD-100. DIMENSIONS ARE IN INCHES AND INCLUDE FINISH THICKNESS UNLESS OTHERWISE SPECIFIED.		TOL: UNLESS SPECIFIED. .XX ± .02 .XXX ± .010 ANGLE ± 1°		 <div>cinch CONNECTIVITY SOLUTIONS <small>a bell group</small></div>		Cinch Connectivity Solutions 299 Johnson Ave. Ste. 100 Waseca, MN 56093 1-800-247-8256							
DRN C. WALLACE	4/29/11	MATERIAL:		TITLE: UCBBJE20									
CHK T. KOHLER	5/1/11												
QUALITY		FINISH:		SIZE A				CAGE CODE 14949		DRAWING NO. 1-0583		REV. F	
MANUF													
APPROVED													
PROJ FILE NO. 1-0583		DO NOT SCALE DWG											

N/A
BLANK LENGTH (REF. ONLY)
N/A
SURFACE AREA

Mouser Electronics

Authorized Distributor

Click to View Pricing, Inventory, Delivery & Lifecycle Information:

[Cinch Connectivity Solutions:](#)

[UCBBJE20-1](#) [UCBBJE20-2](#) [UCBBJE20-3](#) [UCBBJE20-4](#)