

(0.635 mm) .025"

BTS, BSS SERIES

# BASIC BLADE & BEAM HEADER & SOCKET

## SPECIFICATIONS

For complete specifications and recommended PCB layouts see [www.samtec.com?BTS](http://www.samtec.com?BTS) or [www.samtec.com?BSS](http://www.samtec.com?BSS)

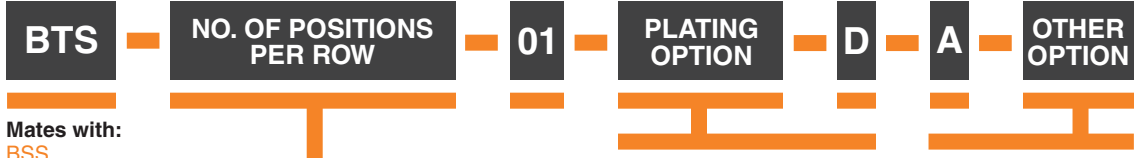
- Insulator Material:** Liquid Crystal Polymer
- Terminal Material (BTS):** Phosphor Bronze
- Contact Material (BSS):** Phosphor Bronze
- Plating:** Au or Sn over 50 µm (1.27 µm) Ni
- Current Rating:** 1.8 A per pin (2 pins powered)
- Operating Temp Range:** -55 °C to +125 °C
- RoHS Compliant:** Yes

## PROCESSING

- Lead-Free Solderable:** Yes
- SMT Lead Coplanarity:** (0.10 mm) .004" max
- Board Stacking:** For applications requiring more than two connectors per board or 100 positions or higher, contact [ipg@samtec.com](mailto:ipg@samtec.com)

## RECOGNITIONS

For complete scope of recognitions see [www.samtec.com/quality](http://www.samtec.com/quality)



Mates with:  
BSS

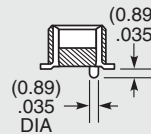
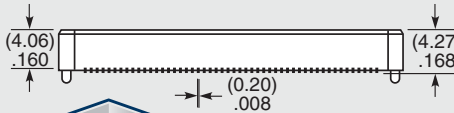
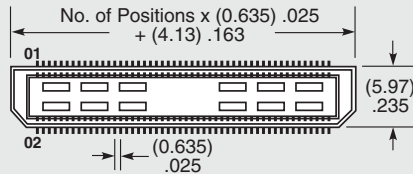
-025, -050, -075, -100

**-F**  
= Gold Flash on contact, Matte Tin on tail

**-L**  
= 10 µm (0.25 µm) Gold on contact, Matte Tin on tail

**-K**  
= (7.00 mm) .275" DIA Polyimide Film Pick & Place Pad

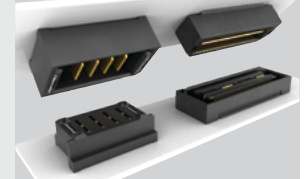
**-TR**  
= Tape & Reel (-100 positions maximum)



**RUGGEDIZED**  
BY SAMTEC

- Passes 10 year MFG

## POWER/SIGNAL APPLICATION

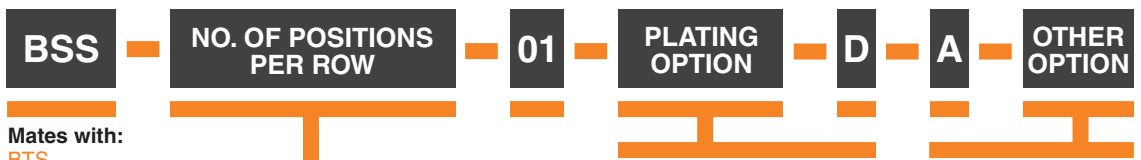


Compatible with UMPT/UMPS for flexible two-piece power/signal solutions

## MATED HEIGHT

LEAD STYLE	MATED HEIGHT*
-01	(5.00) .197

\*Processing conditions will affect mated height.



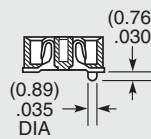
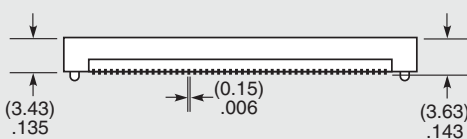
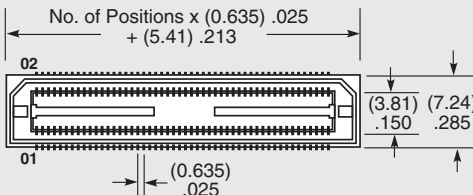
Mates with:  
BTS

-025, -050, -075, -100

**-F**  
= Gold Flash on contact, Matte Tin on tail

**-L**  
= 10 µm (0.25 µm) Gold on contact, Matte Tin on tail

**-TR**  
= Tape & Reel (-100 positions maximum)

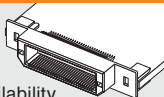


## ALSO AVAILABLE (MOQ Required)

- 30 µm (0.76 µm) Gold
- Other platings
- Other positions

## OTHER SOLUTIONS

Edge Mount capability. Call for availability.



**Note:** Some lengths, styles and options are non-standard, non-returnable.

Due to technical progress, all designs, specifications and components are subject to change without notice.

[WWW.SAMTEC.COM](http://WWW.SAMTEC.COM)

All parts within this catalog are built to Samtec's specifications. Customer specific requirements must be approved by Samtec and identified in a Samtec customer-specific drawing to apply.

# Mouser Electronics

Authorized Distributor

Click to View Pricing, Inventory, Delivery & Lifecycle Information:

## Samtec:

[BTS-025-01-L-D-A](#) [BTS-050-01-L-D-A](#) [BTS-025-01-F-D-A](#) [BTS-075-01-F-D-A-K-TR](#) [BTS-050-01-L-D-A-K-TR](#) [BTS-025-01-F-D-A-K](#) [BTS-075-01-F-D-A](#) [BTS-050-01-L-D-EM2](#) [BTS-075-01-L-D-A](#) [BTS-075-01-L-D-EM2](#) [BTS-075-02-F-D-A-K](#) [BTS-100-01-L-D-EM2](#) [BTS-125-01-L-D-A](#) [BTS-025-01-L-D-EM2](#) [BTS-125-01-L-D-EM2](#) [BTS-150-01-L-D-EM2](#) [BTS-075-01-F-D-A-K](#) [BTS-150-01-L-D-A](#) [BTS-075-01-L-D-A-K-TR](#) [BTS-100-01-L-D](#) [BTS-025-01-L-D](#) [BTS-075-01-L-D](#) [BTS-025-01-L-D-A-K](#) [BTS-050-01-F-D-A-K-TR](#) [BTS-075-02-F-D-A](#) [BTS-100-01-L-D-A-TR](#) [BTS-075-01-F-D-A-TR](#) [BTS-075-01-F-D-EM2](#) [BTS-025-01-L-D-A-K-TR](#) [BTS-100-01-L-D-A-K](#) [BTS-025-01-F-D-A-TR](#) [BTS-025-01-H-D-A](#) [BTS-075-02-F-D-A-K-TR](#) [BTS-100-01-H-D-A](#) [BTS-100-01-H-D-A-K](#) [BTS-075-01-H-D-A](#) [BTS-100-01-L-D-A-K-TR](#) [BTS-025-01-F-D-EM2](#) [BTS-100-01-F-D-A-K](#) [BTS-100-01-H-D-A-K-TR](#) [BTS-050-01-F-D-A-TR](#) [BTS-025-01-L-D-A-TR](#) [BTS-050-01-L-D-A-K](#) [BTS-075-02-L-D-A](#) [BTS-050-01-L-D-A-TR](#) [BTS-100-01-F-D-A](#) [BTS-100-01-F-D-EM2](#) [BTS-150-01-L-D-A-K](#) [BTS-050-01-F-D-A](#) [BTS-125-01-F-D-A](#) [BTS-025-01-F-D-A-K-TR](#) [BTS-050-01-F-D-EM2](#) [BTS-050-01-L-D](#) [BTS-150-01-H-D-EM2](#) [BTS-100-01-L-D-A](#) [BTS-100-01-H-D-A-TR](#) [BTS-050-01-H-D-A](#) [BTS-025-01-H-D-A-K](#) [BTS-075-01-H-D-EM2](#) [BTS-025-01-C-D-A-TR](#) [BTS-050-01-F-D-K](#)