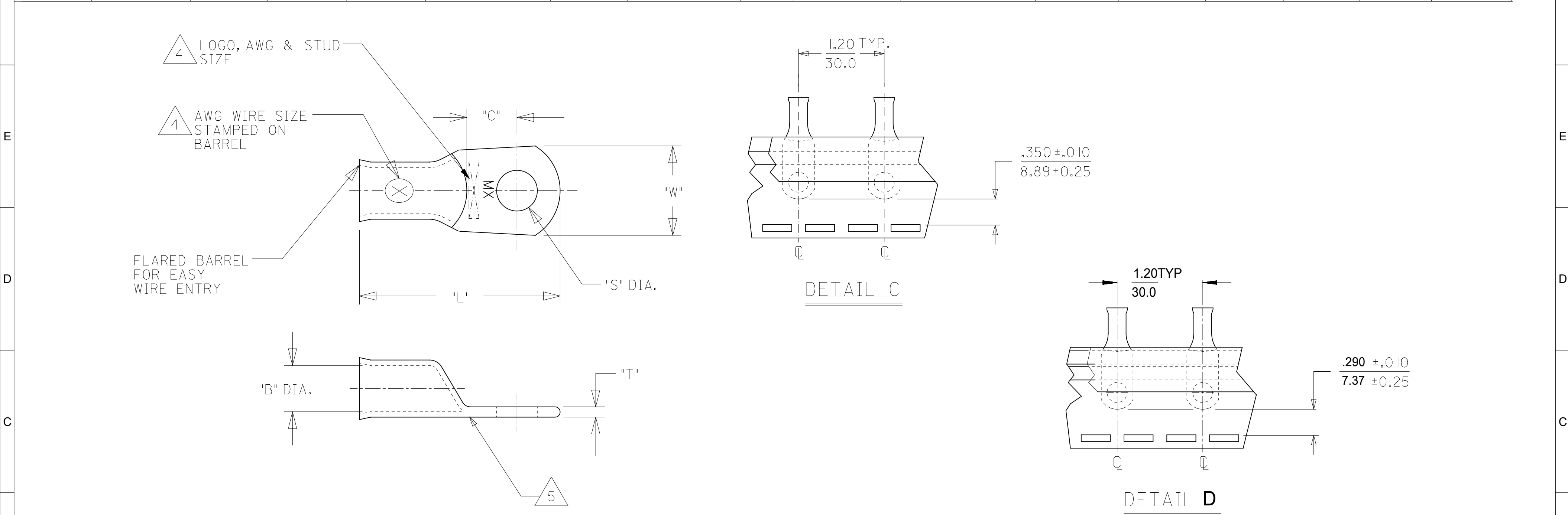


	12		11		10		9		8		7		6		5		4		3		2		1	
	UNPLATED MATERIAL NUMBER	UNPLATED ENG. NUMBER	UNPLATED MAT. NO. ON TAPE	UNPLATED ENG. NO. ON TAPE	PLATED MATERIAL NUMBER	PLATED ENGINEERING NUMBER	PLATED MAT. NO. ON TAPE	PLATED ENG. NO ON TAPE	SEE DETAIL	STUD SIZE	WIRE RANGE	"S"	"L "	"W"	"C"	"B"	"T"							
H	1922 I045 I	BCL-4 I0	---	---	1922 I0452	BCL-4 I0-PL	---	---	---	10/4.8mm	4 AWG/25mm ²	.214/5.45	1.500/38.10	.531/13.49	.429/10.90	.286/7.26	.080/2.03							
	1922 I0404	BCL-4 I4	---	---	1922 I0230	BCL-4 I4-PL	---	---	---	1/4"/M6	4 AWG/25mm ²	.278/7.06	1.500/38.10	.531/13.49	.429/10.90	.286/7.26	.080/2.03							
	1922 I0405	BCL-45 I6	---	---	1922 I023 I	BCL-45 I6-PL	190820025	BCL-45 I6-PLT	D	5/16"/M8	4 AWG/25mm ²	.340/8.64	1.500/38.10	.531/13.49	.429/10.90	.286/7.26	.080/2.03							
	1922 I046 I	BCL-45 I6-WP	---	---	1922 I0460	BCL-45 I6-WP-PL	---	---	---	5/16"/M8	4 AWG/25mm ²	.340/8.64	1.531/38.89	.625/15.88	.397/10.08	.286/7.26	.080/2.03							
	1922 I0383	BCL-438	---	---	1922 I0232	BCL-438-PL	190820026	BCL-438-PLT	D	3/8"/M9	4 AWG/25mm ²	.400/10.16	1.500/38.10	.531/13.49	.429/10.90	.286/7.26	.080/2.03							
	1922 I0458	BCL-438-WP	---	---	1922 I0456	BCL-438-WP-PL	190820027	BCL-438-WP-PLT	D	3/8"/M9	4 AWG/25mm ²	.400/10.16	1.531/38.89	.625/15.88	.397/10.08	.286/7.26	.080/2.03							
	1922 I0459	BCL-438-XWP	---	---	1922 I0457	BCL-438-XWP-PL	---	---	---	3/8"/M9	4 AWG/25mm ²	.400/10.16	1.688/42.88	.766/19.46	.444/11.28	.286/7.26	.100/2.54							
	1922 I0453	BCL-4 I2-XWP	C3 ---	---	1922 I0454	BCL-4 I2-XWP-PL	C3 ---	---	---	1/2"/M12	4 AWG/25mm ²	.520/13.21	1.688/42.88	.766/19.46	.444/11.28	.286/7.26	.100/2.54							
G	1922 I04 I9	BCL-2 I4	---	---	1922 I04 I8	BCL-2 I4-PL	I9082000 I	BCL-2 I4-PLT	C	1/4"/M6	2 AWG/35mm ²	.278/7.06	1.625/41.28	.625/15.88	.437/11.10	.336/8.53	.095/2.41							
	1922 I0400	BCL-25 I6	---	---	1922 I0233	BCL-25 I6-PL	I90820002	BCL-25 I6-PLT	C	5/16"/M8	2 AWG/35mm ²	.340/8.64	1.625/41.28	.625/15.88	.437/11.10	.336/8.53	.095/2.41							
	1922 I0380	BCL-238	---	---	1922 I0235	BCL-238-PL	---	---	---	3/8"/M9	2 AWG/35mm ²	.400/10.16	1.625/41.28	.625/15.88	.437/11.10	.336/8.53	.095/2.41							
	1922 I0564	BCL-238-WP	---	---	1922 I0565	BCL-238-WP-PL	---	---	---	3/8"/M9	2 AWG/35mm ²	.400/10.16	1.750/44.45	.750/19.05	.474/12.04	.336/8.53	.095/2.41							
	1922 I0399	BCL-2 I2-WP	---	---	1922 I0236	BCL-2 I2-WP-PL	---	---	---	1/2"/M12	2 AWG/35mm ²	.520/13.21	1.750/44.45	.750/19.05	.474/12.04	.336/8.53	.095/2.41							
	1922 I0594	BCL- I I0	---	---	1922 I0595	BCL- I I0-PL	---	---	---	10/4.8mm	1 AWG/50mm ²	.214/5.45	1.718/43.64	.656/16.66	.446/11.33	.360/9.14	.100/2.54							
	1922 I042 I	BCL- I I4	---	---	1922 I0420	BCL- I I4-PL	---	---	---	1/4"/M6	1 AWG/50mm ²	.278/7.06	1.718/43.64	.656/16.66	.446/11.33	.360/9.14	.100/2.54							
F	1922 I0396	BCL- I5 I6	---	---	1922 I0237	BCL- I5 I6-PL	---	---	---	5/16"/M8	1 AWG/50mm ²	.340/8.64	1.718/43.64	.656/16.66	.446/11.33	.360/9.14	.100/2.54							
	1922 I0378	BCL- I38	---	---	1922 I0238	BCL- I38-PL	---	---	---	3/8"/M9	1 AWG/50mm ²	.400/10.16	1.718/43.64	.656/16.66	.446/11.33	.360/9.14	.100/2.54							
	1922 I0580	BCL- I38-WP	---	---	1922 I058 I	BCL- I38-WP-PL	---	---	---	3/8"/M9	1 AWG/50mm ²	.400/10.16	1.844/46.84	.750/19.05	.474/12.04	.360/9.14	.100/2.54							
	1922 I0395	BCL- I I2	---	---	1922 I0239	BCL- I I2-PL	---	---	---	1/2"/M12	1 AWG/50mm ²	.520/13.21	1.844/46.84	.750/19.05	.474/12.04	.360/9.14	.100/2.54							



- | | | | | | | | | | | | | | | | | | | | | | | | | | | | | | | | |
|---|---|---|---|--|---|---|---|---|----------|------|----------|----------|---|----------|---------|---|----------|---|---|---------|---|---|--|--|-----------------|----------|----------|----------|--|--|--|
| B | <div> <div> <div>NOTES:</div> <div> <div>1. FOR INSPECTION SIGHT HOLE, PLEASE CONSULT FACTORY.</div> <div>2. OTHER STUD SIZES MAY BE AVAILABLE, PLEASE CONSULT FACTORY.</div> <div>3. MATERIAL: COPPER
PLATING: TIN</div> <div>4. MARKINGS CAN BE AT EITHER LOCATION SHOWN.</div> <div>5. IF TONGUE IS TO BE BENT AT ANY ANGLE. IT MUST BE BENT AROUND A RADIUS ONE HALF THE TONGUE THICKNESS.</div> <div>6. ALL PARTS ARE ROHS COMPLIANT.</div> </div> </div> </div> | <div> <div>THIS DRAWING CONTAINS INFORMATION THAT IS PROPRIETARY TO MOLEX ELECTRONIC TECHNOLOGIES, LLC AND SHOULD NOT BE USED WITHOUT WRITTEN PERMISSION</div> <table> <tr> <td data-bbox="1682 1841 1910 1880"> <div> <div>DIMENSION UNITS</div> <div>IN/MM</div> </div> </td><td data-bbox="1910 1841 2024 1880"> <div> <div>SCALE</div> <div>NTS</div> </div> </td><td data-bbox="2024 1841 2310 1880" rowspan="2"> <div>CURRENT REV DESC: UPDATED ENG NUMBERS</div> <div> <div>EC NO: 620903</div> <div>DRWN: GROJAS01 2018/06/11</div> <div>CHK'D: GROJAS01 2019/07/19</div> <div>APPR: NKENSINGER 2019/07/19</div> <div>INITIAL REVISION:</div> </div> </td><td data-bbox="2310 1841 2821 1880" rowspan="2"> <div> <div>molex</div> <div>EYELET STYLE
COPPER TERMINALS 4, 2, & 1 AWG LUGS</div> </div> </td></tr> <tr> <td data-bbox="1682 1880 1910 1959"> <div> <div>GENERAL TOLERANCES (UNLESS SPECIFIED)</div> <table> <tr> <td></td><td>MM</td><td>INCH</td></tr> <tr> <td>4 PLACES</td><td>±</td><td>±</td></tr> <tr> <td>3 PLACES</td><td>±</td><td>±</td></tr> <tr> <td>2 PLACES</td><td>±</td><td>±</td></tr> <tr> <td>1 PLACE</td><td>±</td><td>±</td></tr> </table> </div> </td><td data-bbox="1910 1880 2024 1959"></td></tr> <tr> <td data-bbox="1682 1959 2821 2037"> <div>PRODUCT CUSTOMER DRAWING</div> <table> <tr> <td>DOCUMENT NUMBER</td><td>DOC TYPE</td><td>DOC PART</td><td>REVISION</td></tr> </table> </td></tr></table></div> <td data-kind="ghost"></td> <td data-kind="ghost"></td> <td data-kind="ghost"></td> | <div> <div>DIMENSION UNITS</div> <div>IN/MM</div> </div> | <div> <div>SCALE</div> <div>NTS</div> </div> | <div>CURRENT REV DESC: UPDATED ENG NUMBERS</div> <div> <div>EC NO: 620903</div> <div>DRWN: GROJAS01 2018/06/11</div> <div>CHK'D: GROJAS01 2019/07/19</div> <div>APPR: NKENSINGER 2019/07/19</div> <div>INITIAL REVISION:</div> </div> | <div> <div>molex</div> <div>EYELET STYLE
COPPER TERMINALS 4, 2, & 1 AWG LUGS</div> </div> | <div> <div>GENERAL TOLERANCES (UNLESS SPECIFIED)</div> <table> <tr> <td></td><td>MM</td><td>INCH</td></tr> <tr> <td>4 PLACES</td><td>±</td><td>±</td></tr> <tr> <td>3 PLACES</td><td>±</td><td>±</td></tr> <tr> <td>2 PLACES</td><td>±</td><td>±</td></tr> <tr> <td>1 PLACE</td><td>±</td><td>±</td></tr> </table> </div> | | MM | INCH | 4 PLACES | ± | ± | 3 PLACES | ± | ± | 2 PLACES | ± | ± | 1 PLACE | ± | ± | | <div>PRODUCT CUSTOMER DRAWING</div> <table> <tr> <td>DOCUMENT NUMBER</td><td>DOC TYPE</td><td>DOC PART</td><td>REVISION</td></tr> </table> | DOCUMENT NUMBER | DOC TYPE | DOC PART | REVISION | | | |
| <div> <div>DIMENSION UNITS</div> <div>IN/MM</div> </div> | <div> <div>SCALE</div> <div>NTS</div> </div> | <div>CURRENT REV DESC: UPDATED ENG NUMBERS</div> <div> <div>EC NO: 620903</div> <div>DRWN: GROJAS01 2018/06/11</div> <div>CHK'D: GROJAS01 2019/07/19</div> <div>APPR: NKENSINGER 2019/07/19</div> <div>INITIAL REVISION:</div> </div> | <div> <div>molex</div> <div>EYELET STYLE
COPPER TERMINALS 4, 2, & 1 AWG LUGS</div> </div> | | | | | | | | | | | | | | | | | | | | | | | | | | | | |
| <div> <div>GENERAL TOLERANCES (UNLESS SPECIFIED)</div> <table> <tr> <td></td><td>MM</td><td>INCH</td></tr> <tr> <td>4 PLACES</td><td>±</td><td>±</td></tr> <tr> <td>3 PLACES</td><td>±</td><td>±</td></tr> <tr> <td>2 PLACES</td><td>±</td><td>±</td></tr> <tr> <td>1 PLACE</td><td>±</td><td>±</td></tr> </table> </div> | | | | MM | INCH | 4 PLACES | ± | ± | 3 PLACES | ± | ± | 2 PLACES | ± | ± | 1 PLACE | ± | ± | | | | | | | | | | | | | | |
| | MM | INCH | | | | | | | | | | | | | | | | | | | | | | | | | | | | | |
| 4 PLACES | ± | ± | | | | | | | | | | | | | | | | | | | | | | | | | | | | | |
| 3 PLACES | ± | ± | | | | | | | | | | | | | | | | | | | | | | | | | | | | | |
| 2 PLACES | ± | ± | | | | | | | | | | | | | | | | | | | | | | | | | | | | | |
| 1 PLACE | ± | ± | | | | | | | | | | | | | | | | | | | | | | | | | | | | | |
| <div>PRODUCT CUSTOMER DRAWING</div> <table> <tr> <td>DOCUMENT NUMBER</td><td>DOC TYPE</td><td>DOC PART</td><td>REVISION</td></tr> </table> | DOCUMENT NUMBER | DOC TYPE | DOC PART | REVISION | | | | | | | | | | | | | | | | | | | | | | | | | | | |
| DOCUMENT NUMBER | DOC TYPE | DOC PART | REVISION | | | | | | | | | | | | | | | | | | | | | | | | | | | | |
- A |
- | | | | |
| --- | --- | --- | --- |
| | | | |

					0 PLACES ±		DRWN: BE		2002/06/26		SD-19221-010		PSD		001		C3	
					ANGULAR TOL ± °		APPR: RD		2002/06/26									
					DOCUMENT STATUS		P1	RELEASE DATE	2019/07/19 19:21:58	DRAFT WHERE APPLICABLE MUST REMAIN WITHIN DIMENSIONS		THIRD ANGLE PROJECTION 		DRAWING C-SIZE	SERIES 19221	MATERIAL NUMBER SEE CHART	CUSTOMER GENERAL MARKET	

12	11	10	9	8	7	6	5	4	3	2	1
----	----	----	---	---	---	---	---	---	---	---	---

Mouser Electronics

Authorized Distributor

Click to View Pricing, Inventory, Delivery & Lifecycle Information:

Molex:

19221-0790