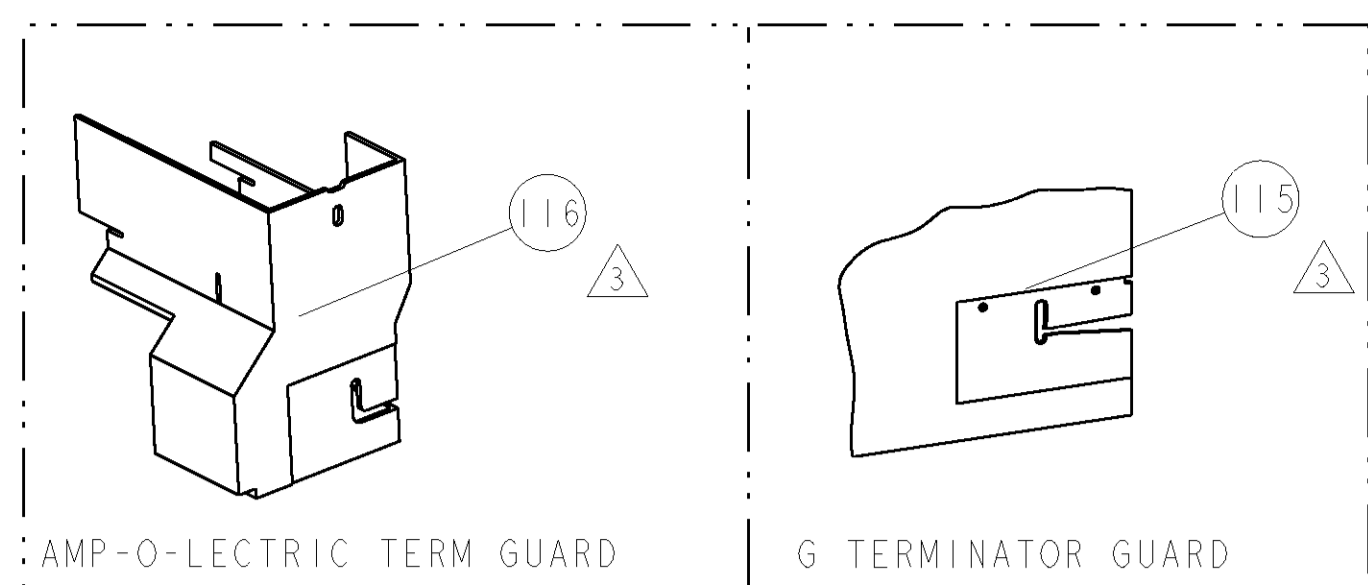


PART NUMBER	REV	FIRST USED	POWER UNIT	FEED TYPE	DESCRIPTION
1855195-1	B	122500-1	LEADMAKER	POST FEED	CUTS CARRIER
1855195-2	B	565435-5	BENCH MODEL K	PRE FEED	CUTS CARRIER
1855195-3	B	354500-1	BENCH MODEL G	PRE FEED	CUTS CARRIER
1855195-6	B	122500-1	LEADMAKER	POST FEED	CONTINUOUS CARRIER
7-1855195-7	A	-	-	-	SPARE PARTS

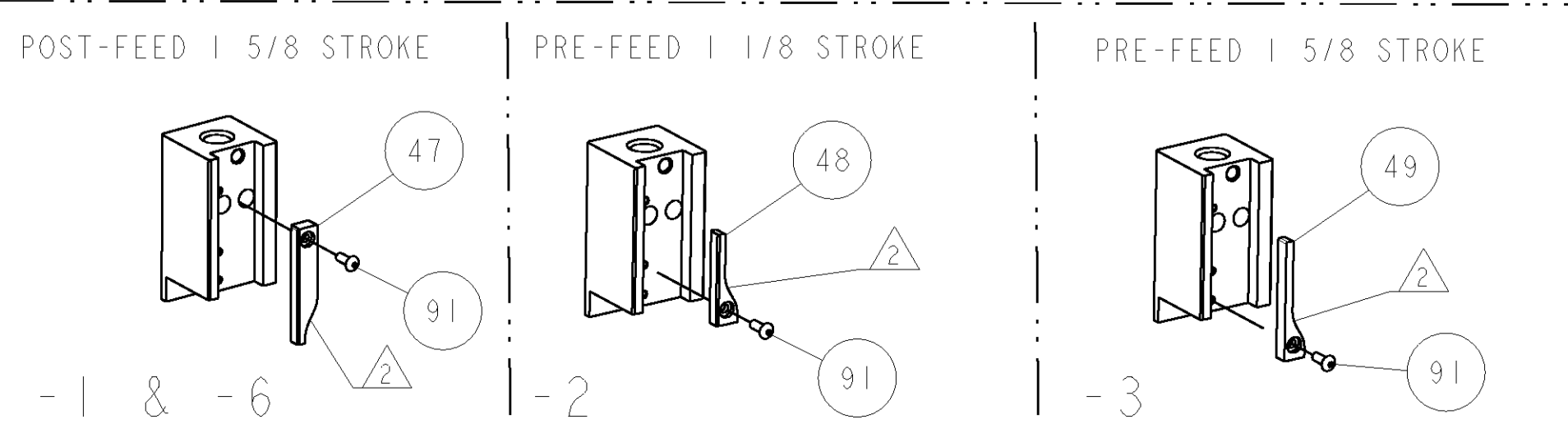
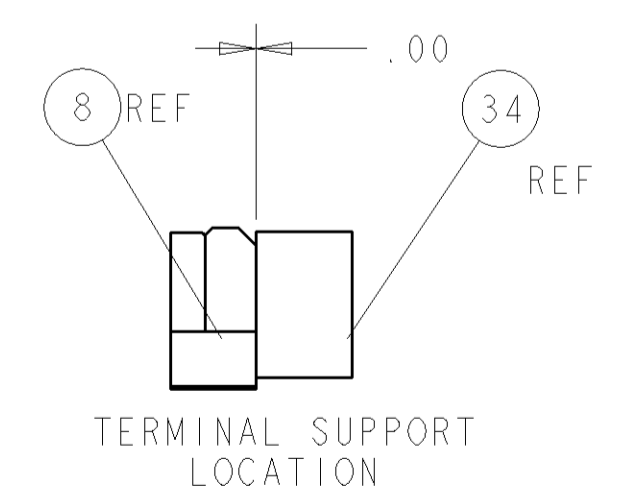
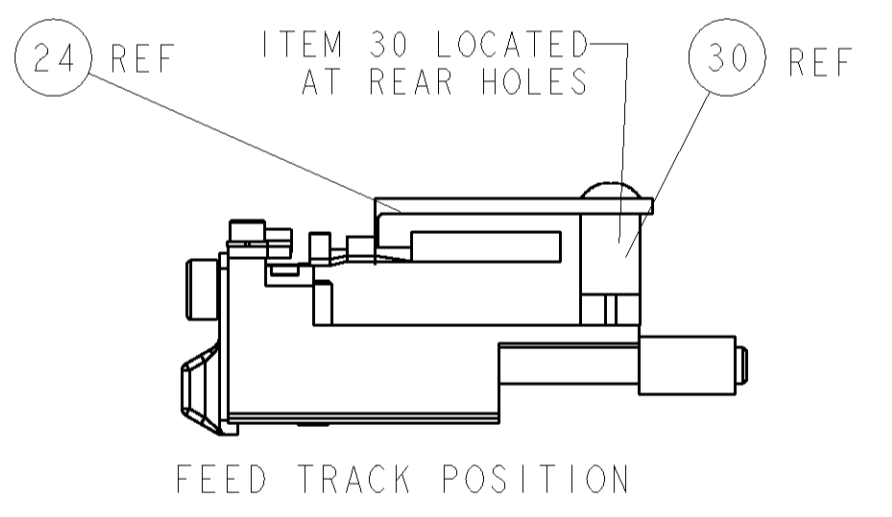
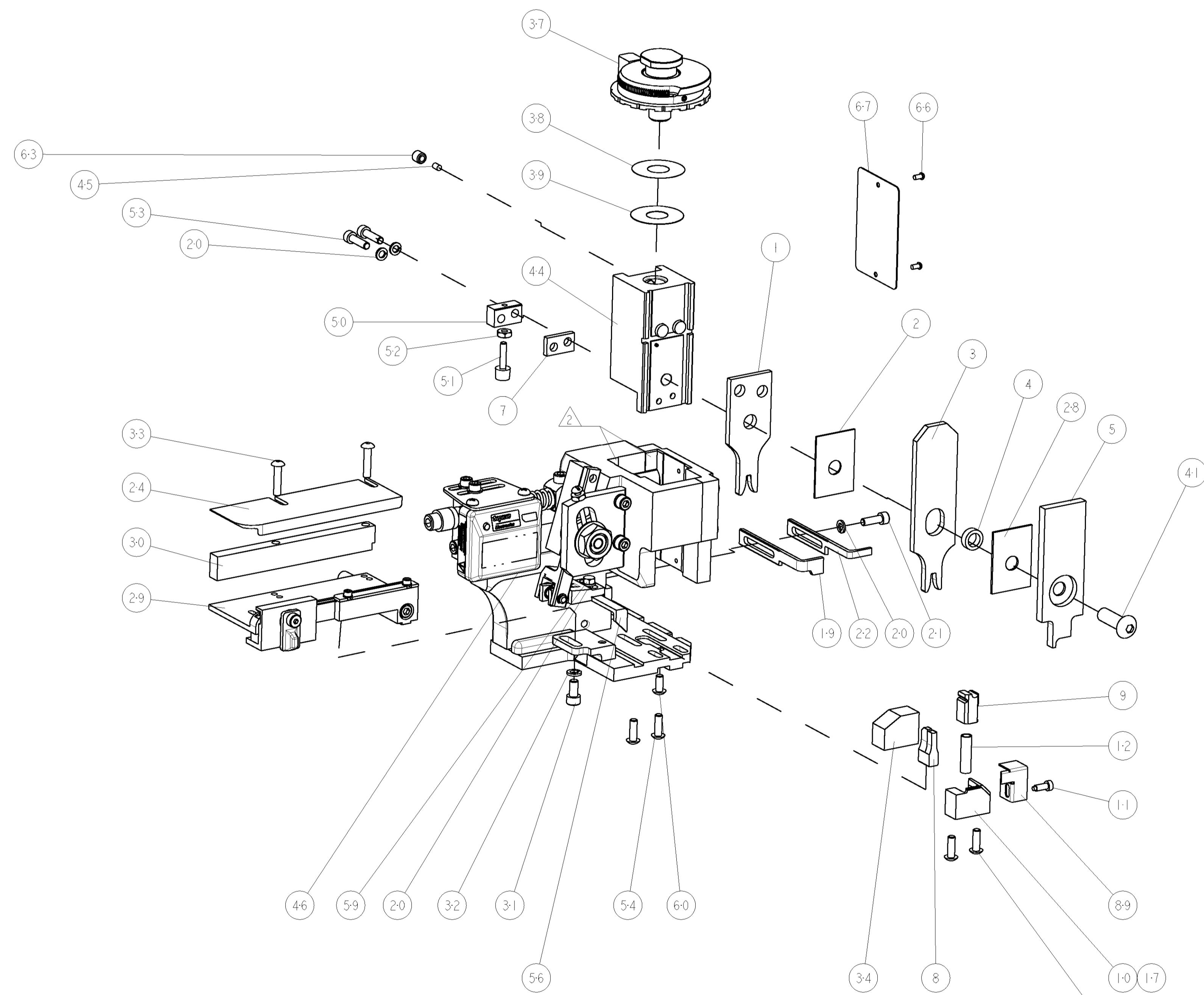


TERMINAL NAME: MALE METRI-PACK 280 TERMINAL			
TE PN	COMP PN	PACKARD TERMINAL - PACKARD CRIMP SPECS	
286570-1	12020116		
1448950-1	12066214	CRIMP HEIGHT	WIRE SIZE
286936-1	12020120	1.65±0.05mm [.065±.002]	2mm2
-	-	1.55±0.05mm [.061±.002]	1.5mm2
-	-	1.55±0.05mm [.061±.002]	1mm2
-	-	-	-
-	-	CRIMP	SIZE TYPE RANGE
-	-	WIRE	2.90mm [.114] F 2mm-1mm
-	-	INSUL	3.56mm [.140] F ∅2.48-3.97
WIRE STRIP LENGTH 4.8mm-5.21mm	TERM APPL SPEC NONE	FEED 12.19mm	APPLICATOR INSTRUCTIONS 408-8040
			SET UP GAGE 458637-1

LOC	DIST	REVISIONS			
A	66	P LTR	DESCRIPTION	DATE	DWN
		A	RELEASED	14MAR2007	BH
		A1	ECR-07-015345	27JUN2007	MY
		B	ECR-08-003982	14FEB2008	MY

- △ RECOMMENDED SPARE PARTS
- △ GREASE LIGHTLY
- △ GUARD MUST BE IN PLACE WHEN OPERATING APPLICATOR IN A BENCH MACHINE

**\* WARNING**  
ON INSTALLATION, SET WIRE DISC TO LARGEST WIRE SIZE SETTING. USE OF SETTINGS BELOW MIN. REQUIRED CRIMP HEIGHT SETTING WILL CAUSE DAMAGE TO CRIMP TOOLING.



REF	QTY	DESCRIPTION	ITEM NO
-	-	455749-1 GUARD WINDOW	116
-	-	679532-1 INSERT, GUARD	115
-	1	1-21002-7 SCR, BTN SKT HD CAP 6-32 X .375	91
-	1	318563-1 GUARD, FRONT CHIP	89
-	1	4088040 SF APPL INST 408-8040	72
-	1	217238-1 GENERAL INSTRUCTION PKG	71
-	1	461264-5 PLATE, IDENTIFICATION	67
-	2	21017-2 SCREW, DRIVE	66
-	1	21009-2 SCR, SET, SELF LOCKING 1/4-20 X .250	63
-	1	22733-8 SCR, BHSC, SELF-LOCKING, 8-32 X .375	60
-	1	2-22603-0 SCR, HEX HD CAP 8-32 X .312	59
-	1	458537-2 PAWL, FEED	56
-	4	2-21002-2 SCR, BTN SKT HD CAP 8-32 X .500	54
-	2	2-21000-8 SCR, SKT HD CAP 8-32 X .625	53
-	1	21018-5 NUT, HEX, REG 6-32	52
-	1	811242-2 BUMPER, HOLD DOWN	51
-	1	690753-1 SPACER, TONKER	50
-	-	690602-6 CAM, PRE FEED, 1 5/8	49
-	-	690602-5 CAM, PRE FEED, 1 1/8	48
-	-	690501-4 CAM, POST FEED, 1 5/8	47
-	1	459456-6 APPL. BASIC SUB ASSY (SIDE WISE MQCA)	46
-	1	690191-1 PLUG, NYLON	45
-	1	819307-1 RAM, SIDE FEED	44
-	1	7-21002-9 SCR, BTN SKT HD CAP 5/16-24 X 1.00	41
-	1	690125-1 SHIM SUB-ASSY	39
-	1	469367-2 SHIM	38
-	1	879103-2 FINE ADJUST HEAD ASSEMBLY	37
-	1	690786-3 TERMINAL SUPPORT	34
-	2	2-21002-4 SCR, BTN SKT HD CAP 8-32 X .750	33
-	1	21024-5 WASHER, SPRG LOCK, REG NO 10	32
-	1	3-21000-4 SCR, SKT HD CAP 10-32 X .375	31
-	1	1-1320908-0 SPACER, STRIP GUIDE	30
-	1	1633091-7 ASSEMBLY, STRIP GUIDE	29
-	1	1-455888-0 SPACER, CRIMPER	28
-	1	1320928-6 PLATE, STRIP GUIDE	24
-	1	690472-2 STRIPPER	22
-	1	2-21000-7 SCR, SKT HD CAP 8-32 X .500	21
-	4	21024-4 WASHER, SPRG LOCK, REG NO 8	20
-	-	691353-1 STRIPPER	19
-	1	679625-1 SHEAR HOLDER, FRONT (NO CUT)	17
-	1	3-22280-3 SPRING, COMPRESSION	12
-	1	690461-1 STOP, SHEAR	11
-	1	690459-1 SHEAR HOLDER, FRONT	10
-	1	462006-1 FLOATING SHEAR, FRONT	9
1	1	1633535-4 ANVIL, COMBINATION	8
-	1	240641-5 SPACER	7
-	1	2-455889-0 DEPRESSOR, SHEAR	5
-	1	238011-1 BLOCK, CRIMPER SPACER	4
1	1	1-456134-7 CRIMPER, INSULATION F PREMIUM	3
-	1	455888-7 SPACER, CRIMPER	2
1	1	2-1673600-0 CRIMPER, WIRE	1

INCHES	TOLERANCES UNLESS OTHERWISE SPECIFIED:	DRAWN	DATE	BY	DATE	BY
0 PLC	± .01	B. HIGMAN	26FEB2005	B. HIGMAN	26FEB2005	B. HIGMAN
1 PLC	± .01	B. HIGMAN	26FEB2005	B. HIGMAN	26FEB2005	B. HIGMAN
2 PLC	± .01	B. HIGMAN	26FEB2005	B. HIGMAN	26FEB2005	B. HIGMAN
3 PLC	± .001	B. HIGMAN	26FEB2005	B. HIGMAN	26FEB2005	B. HIGMAN
4 PLC	± .0001	B. HIGMAN	26FEB2005	B. HIGMAN	26FEB2005	B. HIGMAN
ANGLES	± .0001	B. HIGMAN	26FEB2005	B. HIGMAN	26FEB2005	B. HIGMAN

CUSTOMER VIEWABLE ASSEMBLY

# Mouser Electronics

Authorized Distributor

Click to View Pricing, Inventory, Delivery & Lifecycle Information:

[TE Connectivity:](#)

[1855195-6](#)